

# **TAP-RITE**

**TAPPING SYSTEMS**

**COMPLETE SYSTEMS  
ARTICULATING ARMS  
TAPPERS & MORE!**



**[www.tap-rite.com](http://www.tap-rite.com)**

# TAP-RITE TAPPING SYSTEMS

***The Most Convenient & Efficient Option For Tapping!***  
***Our Complete Tapping System Includes Everything You See Here!***

## **Tapping Motor**

*Various capacities available to suit your shop needs – Allows for quick & easy tapping of blind or through hole applications*

## **Air Line Exhaust Hose**

*Adds noise reduction & pipes away air exhaust from operator*

## **Tap Chuck**

*Every Complete System & Tapping Motor includes a tap chuck – Collets & taps sold separately*

## **Tool Holder**

*Keeps tapping motor secure, stable, and perpendicular to the work piece – Available in Rigid and Universal types to suit your needs!*

## **Articulating Arm**

*Allows for 360° of mobility, completely removes tool reaction, and ensures tool is always perpendicular to the work piece your tapping*

## **FRL Unit**

*Filter, Regulator & Lubricator for your air line to ensure your tapping motor runs smoothly & efficiently*

## **Tool Mounting Post**

*Allows for quick & easy mounting to benches, or tables – Add on a Mag Base or Vac-Pad base for the ultimate portable tapping system*

***Other Options & Accessories Also Available!***



# TAP-RITE TAPPING SYSTEMS

## Complete Tapping Systems - AIR

*Our most popular sellers! A complete package includes articulating arm, tapping motor, FRL, tap chuck, tool holder, standard mounting post and air line exhaust kit. Ideal for tapping & assembly applications as well as chamfering, countersinking, drilling, reaming, deburring and more!*

- Produce high quality threads
- Tap blind and through holes
- Reduce tap breakage
- Use conventional or roll taps
- Engineered to absorb all torque reaction
- Free up your CNC machine
- Minimal assembly required
- Tap collets sold separately
- Vertical Tapping (Rigid)
- Vertical & Horizontal Tapping (Universal)
- Reduce/Eliminate stripped or cross threads.

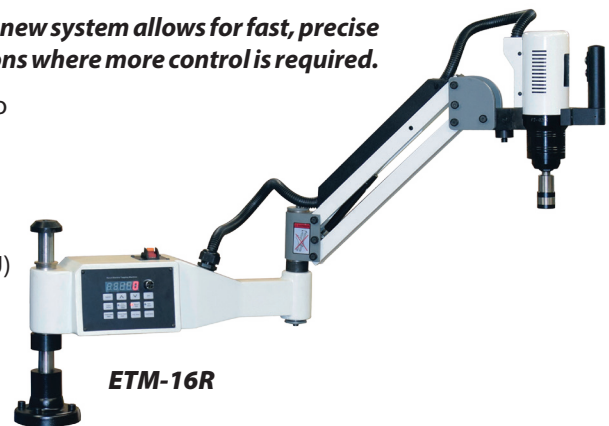


Tapping Capacity	Package Includes								
	Model No.	Order No.	Reach in. (mm)	Tapping Arm	Tapper Motor	Tapping Chuck	F.R.L. Unit	Tool Holder	Air Line & Exhaust Kit
3/8" (10mm)	TRS1000-R375	262497	4 - 39 (102 - 991)	AC1000	TR700S	BT1-B12 System 1	TR300H	ACTHR-39 Rigid	TRAEK1000
	TRS1500-R375	262503	12 - 78 (300 - 1,981)	AC1500	TR700S	BT1-B12 System 1	TR300H	ACTHR-39 Rigid	TRAEK1500
	TRS1000-U375	262500	4 - 39 (102 - 991)	AC1000	TR700S	BT1-B12 System 1	TR300H	ACTHU-39 Universal	TRAEK1000U
	TRS1500-U375	262506	12 - 78 (300 - 1,981)	AC1500	TR700S	BT1-B12 System 1	TR300H	ACTHU-39 Universal	TRAEK1500U
1/2" (12mm)	TRS1000-R500	262496	4 - 39 (102 - 991)	AC1000	TR400S	BT1-B12 System 1	TR300H	ACTHR-39 Rigid	TRAEK1000
	TRS1500-R500	262502	12 - 78 (300 - 1,981)	AC1500	TR400S	BT1-B12 System 1	TR300H	ACTHR-39 Rigid	TRAEK1500
	TRS1000-U500	262499	4 - 39 (102 - 991)	AC1000	TR400S	BT1-B12 System 1	TR300H	ACTHU-39 Universal	TRAEK1000U
	TRS1500-U500	262505	12 - 78 (300 - 1,981)	AC1500	TR400S	BT1-B12 System 1	TR300H	ACTHU-39 Universal	TRAEK1500U
7/8" (22mm)	TRS1050-R875	262508	5 - 41 (127 - 1,041)	AC1050HD	TR90250	BT2-B18 System 2	TR300H	ACTHR-57HDL Rigid	TRAEK1050HD
	TRS2000-R875	262510	12 - 88 (305 - 2,235)	AC2000HD	TR90250	BT2-B18 System 2	TR300H	ACTHR-57HDL Rigid	TRAEK2000
	TRS1050-U875	262509	5 - 41 (127 - 1,041)	AC1050HD	TR90250	BT2-B18 System 2	TR300H	ACTHU-57HDL Universal	TRAEK1050HDU
	TRS2000-U875	262511	12 - 88 (305 - 2,235)	AC2000HD	TR90250	BT2-B18 System 2	TR300H	ACTHU-57HDL Universal	TRAEK2000U
1.1/8" (29mm)	TRS1050-R1125	294308	5 - 41 (127 - 1041)	AC1050HD	TR90250(BT3)	BT3-B18 System 3	TR300H	ACTHR-57HDL Rigid	TRAEK1050HD
	TRS2000-R1125	294310	12 - 88 (305 - 2235)	AC2000HD	TR90250(BT3)	BT3-B18 System 3	TR300H	ACTHU-57HDL Rigid	TRAEK2000
	TRS1050-U1125	294309	5 - 41 (127 - 1041)	AC1050HD	TR90250(BT3)	BT3-B18 System 3	TR300H	ACTHR-57HDL Universal	TRAEK1050HDU
	TRS2000-U1125	294311	12 - 88 (305 - 2235)	AC2000HD	TR90250(BT3)	BT3-B18 System 3	TR300H	ACTHU-57HDL Universal	TRAEK2000U

## Complete Tapping Systems - ELECTRIC

*NEW from Tap-Rite - An Electric Tapping Solution loaded with features. This new system allows for fast, precise and effective Tapping where an Air Supply is not an option, or for applications where more control is required.*

- Variable Forward & Reverse speed adjustment to max 250 RPM
- Manual or Auto Tapping Mode
- Tapping Pitch/Depth control in Auto Mode
- Deep Hole Tapping Mode to avoid small tap breakage
- Large easy to read Display mounted at 15 degrees for easy access
- Heavy-Duty Cast Aluminum Body
- Variable Torque Setting up to 92Nm/68 Ft-lbs
- Standard Rigid head for Vertical Tapping (16R)
- Universal Head For Vertical and Horizontal Tapping (16U)
- Includes standard tool post for mounting
- Steel Motor Housing



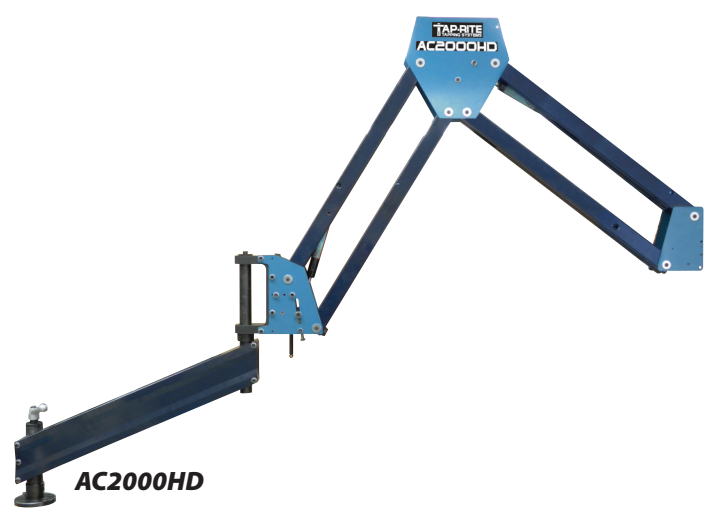
Model No.	Order No.	Mount	Tapping Capacity	Reach in. (mm)	Speed Range	Servo Motor Power	Power Supply	Tool Holder	Weight
ETM-16R	297299	System 1	#0 - 9/16" (1.6 - 16mm)	10-41" (254 - 1,040)	0 to 250 RPM	600 W	220V single phase	Rigid	46 LBS(21 KGS)
ETM-16U	297300	System 1	#0 - 9/16" (1.6 - 16mm)	10-41" (254 - 1,040)	0 to 250 RPM	600 W	220V single phase	Universal	48 LBS(22 KGS)

# TAP-RITE TAPPING SYSTEMS

## Articulating Arms

*Ideal for tapping & assembly applications as well as chamfering, countersinking, drilling, reaming, deburring and more!*

- Eliminates All Torque Reaction and Tool Weight
- Available with Rigid Tool Holder or Universal Tool Holders (page 6)



Model No.	Order No.	Max. Torque ft.lb (Nm)	Reach in. (mm)	Max. Tool Weight lb (kg)	Compatible Tapping Motors
AC1000	133666	32.5 (44)	4 - 39 (102 - 991)	7.5 (3.4)	TR400S, TR700S
AC1050HD	134465	80 (108)	5 - 41 (127 - 1,041)	10 (4.5)	TR90250, TR90250(BT3)
AC1500	135514	32.5 (44)	12 - 78 (300 - 1,981)	6.5 (3)	TR400S, TR700S
AC2000HD	133515	80 (108)	12 - 88 (305 - 2,235)	13 (6)	TR90250, TR90250(BT3)

# TAP-RITE TAPPING SYSTEMS

## Tapping Motors

*Tap-Rite Series tappers are designed and manufactured for a wide range of production tapping applications.*

- Comfort grip
- Flush grease fitting
- Lever-Start requires lever only to be depressed for right-hand (clockwise) direction - For left-hand (counter-clockwise) direction, reverse button must be depressed
- Optional exhaust hose available for quiet operation
- Rear exhaust (TR700S & TR400S)
- Side port exhaust (TR90250 & TR90250(BT3))
- Supplied with tap chuck



TR700S/TR400S



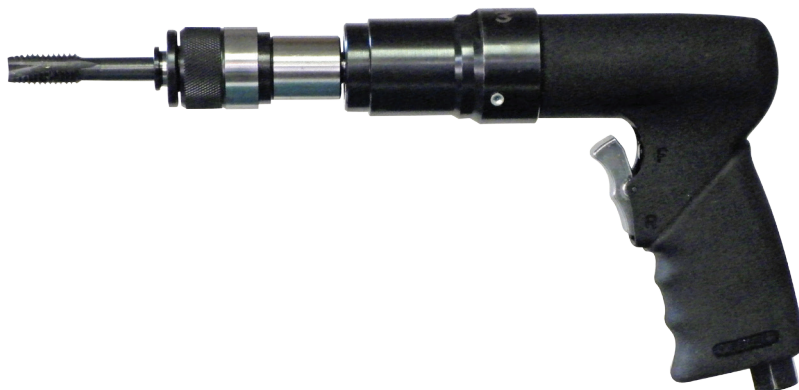
TR90250

Model No.	Order No.	Max. Torque ft.lb (Nm)	Tap Chuck Size	Tapping Capacity in. (mm)	Free Speed rpm	Length in. (mm)	Hose Size in. (mm)	Weight lbs (kgs)	Air Cons. cfm (cmm)	Noise Level dB(A)	Air Inlet (NPT)	Body Clamping Dia. (mm)
TR700S	243858	20 (27)	Size 1	3/8 (10)	700	12 (305)	3/8 (9.5)	3.15 (1.43)	4 (0.11)	82	1/4	39
TR400S	243857	25.8 (35)	Size 1	1/2 (12)	400	12 (305)	3/8 (9.5)	3.15 (1.43)	4 (0.11)	82	1/4	39
TR90250	243859	177 (240)	Size 2	7/8 (22)	90/250	16.1/4 (412)	3/8 (9.5)	8.4 (3.82)	18 (0.5)	90	1/4	57
TR90250(BT3)	294191	177 (240)	Size 3	1.1/8 (28.5)	90/250	16.3/4 (425)	3/8 (9.5)	11.6 (5.26)	18 (0.5)	90	1/4	57

## Pro-Tappers – Pistol Style

*Pro-Tapper Series tappers are designed and manufactured for a wide range of production tapping applications.*

- Unique rocker trigger allows for comfortable and fluid two finger operation
- Comfort grip
- Flush grease fitting
- Handle exhaust with silencer for quiet operation
- Supplied with system 1 tap chuck
- Tap collets sold separately

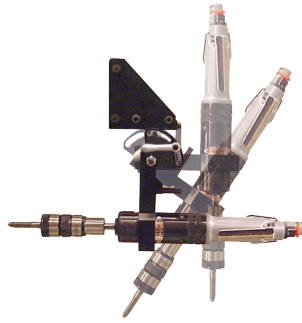
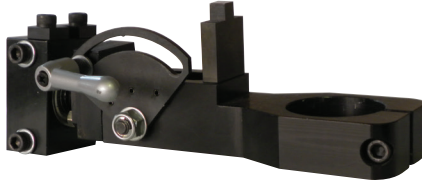


Model No.	Order No.	Max. Torque ft.lb (Nm)	Tapping Capacity in. (mm)	Free Speed rpm	Length in. (mm)	Hose Size in. (mm)	Weight lbs (kgs)	Air Cons. cfm (cmm)	Noise Level dB(A)	Air Inlet (NPT)	Vibration Level m/s <sup>2</sup>
TR700P	249790	20 (27)	3/8 (10)	700	9.25 (235)	3/8 (9.5)	2.80 (1.27)	4 (0.11)	87	1/4	<2.0
TR400P	249789	25.8 (35)	1/2 (12)	400	9.25 (235)	3/8 (9.5)	2.80 (1.27)	4 (0.11)	87	1/4	<2.0

# TAP-RITE TAPPING SYSTEMS

## Universal Tool Holder

*Allows 90° of adjustment. Accepts tools with a maximum outside diameter of up to 57mm.*

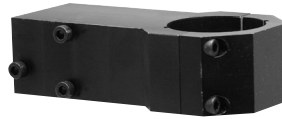


Model No.	Order No.	Bore Dia. in. (mm)	Compatible With
ACTHU-1.1/2	133558	1.1/2 (31.8)	N/A*
ACTHU-39	135517	39mm	TR400S, TR700S
ACTHU-41.6	133557	41.6mm	N/A*
ACTHU-44	135553	44mm	N/A*
ACTHU-45	133559	45mm	N/A*
ACTHU-57HD	137783	57mm	TR90250 & TR90250(BT3)

\*For Use with Other Tools, Depending on Bore Dia.

## Rigid Tool Holder

*Accepts tools with a maximum outside diameter of up to 57mm.*



Model No.	Order No.	Bore Dia. in. (mm)	Compatible With
ACTHR-1.1/2	135171	1.1/2 (38.1)	N/A*
ACTHR-39	135173	1.54 (39)	TR400S, TR700S
ACTHR-41.6	133553	1.64 (41.6)	N/A*
ACTHR-45	135174	1.77 (45)	N/A*
ACTHR-57HDL	159416	2.24 (57)	TR90250 & TR90250(BT3)

\*For Use with Other Tools, Depending on Bore Dia.

## Tap Chucks



Model No.	Order No.	Capacity in. (mm)	Mount	System
BT1-01	132764	1/2	1JT	System 1
BT1-02	162640	1/2	2JT	System 1
BT1-B12	132892	1/2	B12	System 1
BT2-B18	145707	7/8	B18	System 2
BT3-B18	160942	1.1/8	B18	System 3

## Tap Chuck Adapters



*Drill Chuck Adapter*



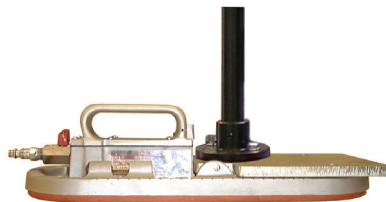
*Reducing Adapter*

Model No.	Order No.	Description
BT1-JT2	146427	Drill Chuck Adaptor - System 1 to Jacobs Taper 2
BT1-JT6	146428	Drill Chuck Adaptor - System 1 to Jacobs Taper 6
BT2-JT6	163098	Drill Chuck Adaptor - System 2 to Jacobs Taper 6
BT2-BT1	136153	System Reducing Adaptor - System 2 to System 1
BT3-BT2	170848	System Reducing Adaptor - System 3 to System 2

## Vac-Pad Mounting Base

*Vac-Pad mounted with a steel plate which accepts AC1000 & AC1050HD articulating arms, so that you can adhere to non-ferrous materials.*

- Tapped holes for quick mounting of tool post & articulating arm



**Note:** Tool mounting post not included

Model No.	TRD1045A
Order No.	263694
Compatible With	AC1000 & AC1050HD
Surface Holding Power lbf (kgf)	761 (345)
Min. Air Supply	85 psi @ 2 CFM
Length in. (mm)	16 (400)
Height in. (mm)	4 (100)
Weight lbs (kgs)	5.3 (2.4)
Width in. (mm)	6 (153)

# TAP-RITE TAPPING SYSTEMS

## Positive Drive Tap Collets

Ideal for through hole applications.



Mount	Model No.	Order No.	Type	Capacity
System 1	BT-P(#0-#6)	148425	Rigid	#0 - #6 (M1.6-M3.5)
	BT-P(#8)	148426	Rigid	#8 (M4)
	BT-P(#10)	148427	Rigid	#10 (M4.5-M5)
	BT-P(#12)	205283	Rigid	#12
	BT-P(1/4)	137586	Rigid	1/4" (M6, M6.3)
	BT-P(5/16)	137587	Rigid	5/16" (M7, M8)
	BT-P(3/8)	148428	Rigid	3/8" (M10)
	BT-P(1/2)	148429	Rigid	1/2" (M12.5)
System 2	BT-2P(5/16)	148420	Rigid	5/16" (M7, M8)
	BT-2P(3/8)	137588	Rigid	3/8" (M10)
	BT-2P(1/2)	137589	Rigid	1/2" (M12, M12.5)
	BT-2P(9/16)	229088	Rigid	9/16" (M14)
	BT-2P(5/8)	148432	Rigid	5/8" (M16)
	BT-2P(3/4)	135525	Rigid	3/4"
	BT-2P(7/8)	135558	Rigid	7/8" (M22)
	BT-2P(1/4)NPT	148434	Rigid	1/4"
System 3	BT-2P(3/8)NPT	148435	Rigid	3/8"
	BT-2P(1/2)NPT	148436	Rigid	1/2"
	BT-3P(1/2)	000000	Rigid	1/2"
	BT-3P(9/16)	000000	Rigid	9/16"
	BT-3P(5/8)	000000	Rigid	5/8"
	BT-3P(11/16)	000000	Rigid	11/16"
	BT-3P(3/4)	000000	Rigid	3/4"
	BT-3P(13/16)	000000	Rigid	13/16"
	BT-3P(7/8)	000000	Rigid	7/8"
	BT-3P(15/16)	000000	Rigid	15/16"
	BT-3P(1")	173919	Rigid	1" (M25)
	BT-3P(1.1/8)	173920	Rigid	1-1/8" (M27)
	BT-3P(3/4)NPT	205285	Rigid	3/4"

## Torque Adjustable Tap Collets

Unique, adjustable integral clutch system prevents tap breakage. Ideal for blind hole/bottoming applications.



Mount	Model No.	Order No.	Type	Capacity
System 1	BT-C(#0-#6)	134447	Clutch	#0 - #6 (M1.6-M3.5)
	BT-C(#8)	132897	Clutch	#8 (M4)
	BT-C(#10)	132898	Clutch	#10 (M4.5-M5)
	BT-C(#12)	180156	Clutch	#12
	BT-C(1/4)	132899	Clutch	1/4" (M6, M6.3)
	BT-C(5/16)	132900	Clutch	5/16" (M7, M8)
	BT-C(3/8)	132901	Clutch	3/8" (M10)
	BT-C(7/16)	134583	Clutch	7/16" (M11)
System 2	BT-C(1/2)	134448	Clutch	1/2" (M12, M12.5)
	BT-C(9/16)	257716	Clutch	9/16" (M14)
	BT-C(1/8)NPT	137578	Clutch	1/8"
	BT-2C(5/16)	239161	Clutch	5/16" (M7, M8)
	BT-2C(3/8)	263415	Clutch	3/8" (M10)
	BT-2C(7/16)	263417	Clutch	7/16" (M11)
	BT-2C(1/2)	263416	Clutch	1/2" (M12, M12.5)
	BT-2C(5/8)	137572	Clutch	5/8" (M16)
System 3	BT-2C(3/4)	137573	Clutch	3/4"
	BT-2C(7/8)	137574	Clutch	7/8" (M22)
	BT-2C(1/4)NPT	137575	Clutch	1/4"
	BT-2C(3/8)NPT	137576	Clutch	3/8"
	BT-2C(1/2)NPT	137577	Clutch	1/2"
	BT-3C(1/2)	000000	Clutch	1/2"
	BT-3C(9/16)	000000	Clutch	9/16"
	BT-3C(5/8)	000000	Clutch	5/8"
	BT-3C(11/16)	000000	Clutch	11/16"
	BT-3C(3/4)	000000	Clutch	3/4"
	BT-3C(13/16)	000000	Clutch	13/16"
	BT-3C(7/8)	000000	Clutch	7/8"
	BT-3C(15/16)	000000	Clutch	15/16"
	BT-3C(1)	160943	Clutch	1" (M25)
	BT-3C(1.1/8)	160944	Clutch	1-1/8" (M27)

## Exhaust Hose Kits

Kit includes air supply hose and exhaust hose for reducing noise and redirect exhaust air.

Model No.	Order No.	Compatible With
TRA EK1000	258354	AC1000 w/Rigid Tool Holder
TRA EK1000U	298495	AC1000 w/Universal Tool Holder
TRA EK1050HD	165926	AC1050HD w/Rigid Tool Holder
TRA EK1050H DU	298490	AC1050HD w/Universal Tool Holder
TRA EK1500	159116	AC1500 w/Rigid Tool Holder
TRA EK1500U	298494	AC1500 w/Universal Tool Holder
TRA EK2000	298497	AC2000 w/Rigid Tool Holder
TRA EK2000U	298498	AC2000 w/Universal Tool Holder



## FRL Unit

These accessories improve air tool performance and increase tool life. Lubricators have a ten position dial for precise management of oil flow.



Model No.	Order No.	Compatible With
TR300H	263620	All Tap-Rite Products



## Magnetic Mounting Base

*Ideal for applications where a stationary mount is not suitable. This allows the arm to be mobile and an excellent choice for flat magnetic surfaces & pipe applications.*

- High carbon steels & cast iron will have considerably less holding power. Steel plate 1/2" thick will have approximately 30% less holding power compared to 1" thick
- Tapped holes for quick mounting of tool post & articulating arm

**Note:** Tool mounting post not included



<b>Model No.</b>	<b>TRML300</b>
<b>Order No.</b>	<b>263692</b>
Compatible With	AC1000
Weight lbs (kgs)	17.6 (8)
Dimensions in. (L x W x H)	7.3 x 8.3 x 3.8
<i>Includes ON/OFF Lever</i>	
Holding Cap. Safety Factor	3.5x

<b>Model No.</b>	<b>TRML600</b>
<b>Order No.</b>	<b>263693</b>
Compatible With	AC1050HD & AC1500
Weight lbs (kgs)	48.5 (22)
Dimensions in. (L x W x H)	10.4 x 11.9 x 4.7
<i>Includes ON/OFF Lever</i>	
Holding Cap. Safety Factor	3.5x

## Heavy Duty Mobile Tapping Table

*Versatile mobile work station ideal for tapping arm applications and other clamping and fixturing jobs.*

- 1/2" T slot , ground, heavy duty cast table
- Heavy duty castors for east movement integrated with 4 jack feet for stability and leveling
- Heavy Duty welded steel cabinet with 3 storage compartment



<b>Model No.</b>	<b>MT007-1</b>
<b>Order No.</b>	<b>292500</b>
Length in.	35.1/2
Height in.	33
Width in.	23.5/8
Weight	308 lbs (140 KGS)

## Heavy Duty Precision Mobile Tapping Table

*Versatile mobile work stations designed for Tapping arm applications and other clamping and fixturing jobs.*

- 10 position tap collet holder shelf
- 5/8 T-Slot Precision Ground, heavy duty cast iron table with fluid trough and NPT drain hole
- Heavy Duty castors for easy movement with 4 jack feet for stability and leveling
- Heavy Duty welded steel cabinet with 1 middle and 1 bottom storage shelf



<b>Model No.</b>	<b>MT007</b>
<b>Order No.</b>	<b>170564</b>
Length in.	33.1/2 + 6" Tap Collet Shelf
Height in.	33.1/2
Width in.	26.3/4
Weight	341 lbs (155 KGS)

**Note:** Tapping Arm System Not Included.