



1730 McPherson Court, Unit 10, Pickering, Ontario L1W 3E6
Phone (905) 839-6111 Fax (905) 839-7100

4455 Alaska Street, Burnaby, B.C. V5C 5T3
Phone (604) 298-2933 Fax (604) 294-8131

UET-10

TORQUE TESTERS

OPERATING INSTRUCTIONS

AND PARTS LISTINGS

UET-10C TESTERS

UET-10C: A three range tester with a hex adapter for attaching soft or hard joints when testing a tool. Measurement can be taken in in-lb, kgf-cm, or nm. The desired readout is selected by a switch on the front of the tester.

This model also has a calibration check function which will indicate a problem or required calibration.

OPERATING INSTRUCTIONS

Battery Check: Before using, turn unit on and if the decimal point is flashing or you have no read out. Replace or recharge batteries with provided recharge unit.

Note: Under no circumstance attempt to use the UET-10 with the recharge unit plugged in. This will result in erroneous readings.

Operation: 1) Push reset button and simultaneously adjust zero adjustment knob until LED reads 00.0.

2) Set up testing attachment on socket shaft and tighten with tool to be tested.

3) LED will show the peak torque reached by the tool.

4) Loosen testing attachment bolt by turning counter clockwise.

5) Push reset button to return LED to 00.0.

Note: If required, repeat step one. This will be necessary if the unit has not had time to warm up, or is being used in a hot or cold environment.

Note: Ranges may be changed at any time as desired by the operator for read out in in-lb, kgf-cm, or nm. Each range has a cal check that can be used to check the range selected by pushing reset, then cal check. The reading should match the reading over the cal switch when unit has been zeroed.

Note: Always check 00.0 before using.

IMPORTANT: Always loosen bolt after each test to the point that approximately the same rundown is achieved. This will give consistency to read outs.

If hard joint test is attempted with just the nut and bolt without any buffer, thread damage resulting in inaccuracy will be very noticeable.

For maximum accuracy, 00.0 should be checked every time reset is accomplished. The tester is very sensitive to the environment.

Caution: Never provide higher torque than meter is rated for.

Caution: Never apply impact clutches, cushion clutches, etc. to the tester. The ratcheting or hammering action will rupture the strain gauge causing costly repairs.

USEFUL CONVERSIONS

KGf-CM	=	1.15213 X IN-LBS
NM	=	.11298 X IN-LBS
NM	=	.0980665 X KGf-CM
IN-LBS	=	.86796 X KGf-CM
IN-LBS	=	8.85073 X NM
KGf-CM	=	10.19716 X NM

SPECIFICATIONS

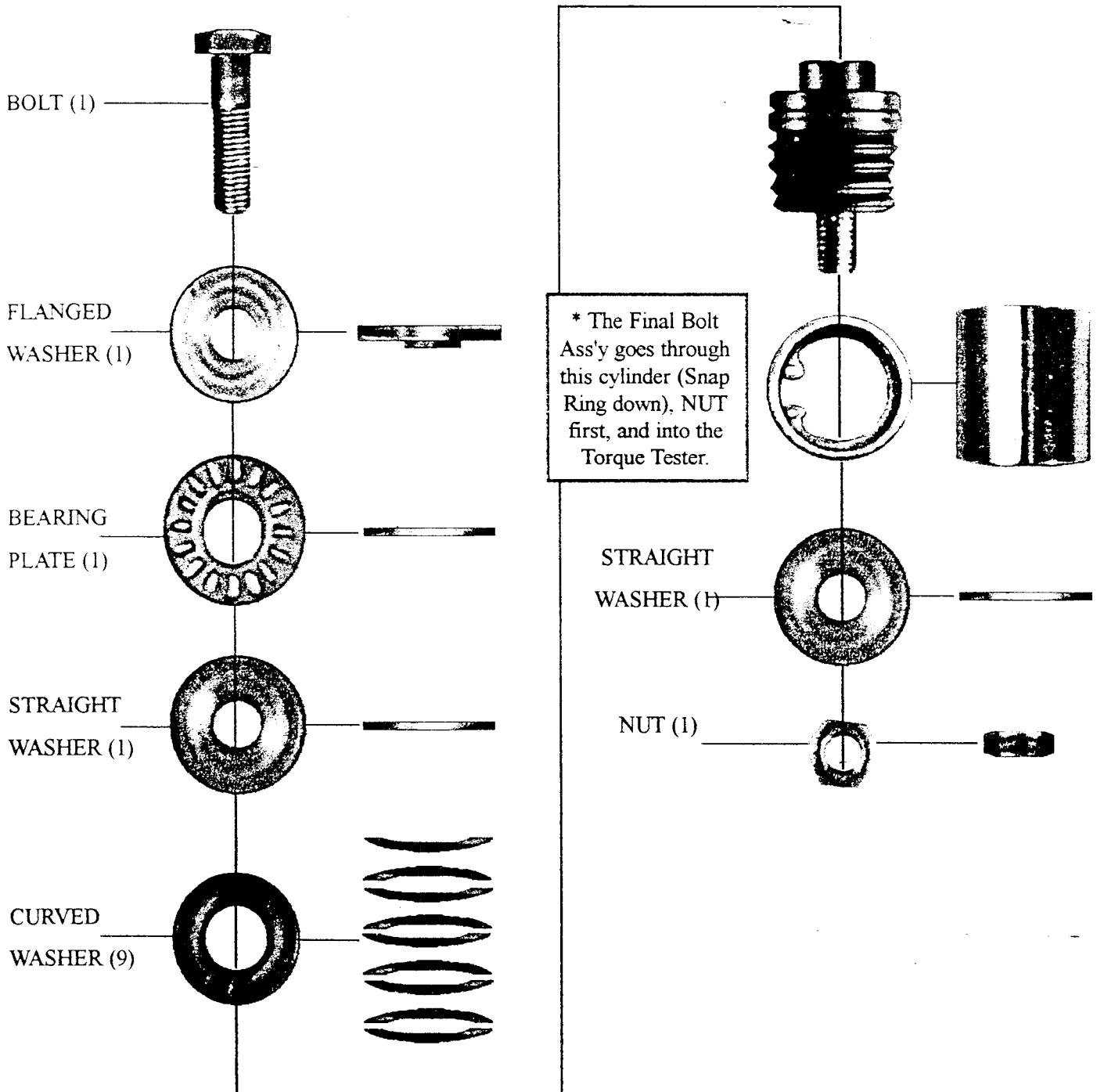
UET-10-C

Range Capacity	0-10 NM, 0-100 IN-LB, 0-100 KG-CM by changing select switch
Tolerance	Better than +/- .5%
Response Frequency	700HZ
Power Source	Battery pack (Rechargeable NI-CAD)
Charging Time	8 HRS.
Torque Detection	Electronic conversion of twist stress through a strain gauge
Read-out	LED
Weight	5.1 LB

"TORQUE TESTER"

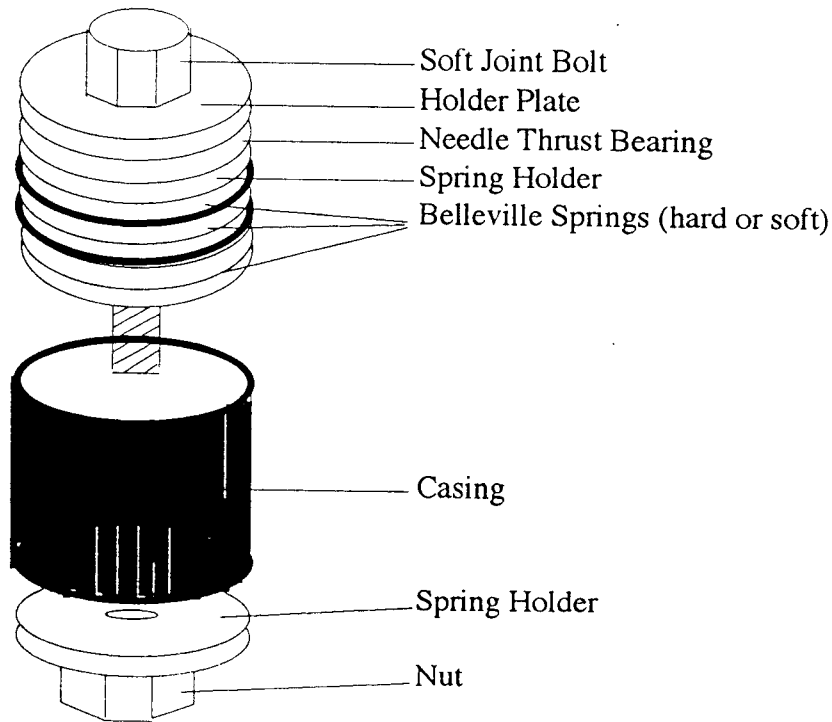
RUNDOWN FIXTURE ASSEMBLY

Below, you will find the order of Assembly for the Uryu Rundown Fixture. This bolt assembly must be assembled just as the chart specifies, if it should fall apart during Torque Testing. The NUT end of the assembly is the side that sits in the Torque Tester.



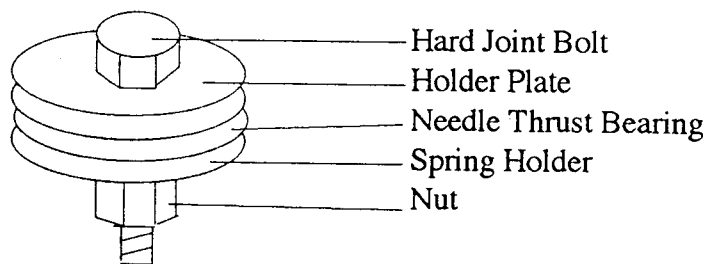
Soft Joint:

Two thicknesses of Belleville Springs are available to simulate a wide range of soft joints. This is accomplished by changing the number of springs used or the direction they are stacked in the casing.



Hard Joint:

Belleville springs are available if desired, however; only the short bolt, holder plate, needle thrust bearing, spring holder, and nut are normally used.



PARTS LISTING

Description	Part Number
01) Battery Charger	909-416-0
02) Soft Joint	836-890-4
03) Soft Belleville Spring	962-600-0
04) Hard Belleville Spring	962-601-0
05) Sochet 5mm Shank	918-129-0
06) Socket 1/4 in Shank	918-223-0
07) Hard Joint Bolt	946-563-0
07a) Hard Joint Bolt Coated	946-930-0
07b) Soft Joint Bolt	946-565-0
07c) Soft Joint Bolt Coated	946-928-0
08) Carrying Case	UET-CC
09) Soft Joint Holder Plate	836-397-3
10) Needle Thrust Bearing	988-835-0
11) Soft Joint Spring Holder	836-165-3
12) Soft Joint Casing	836-175-4
13) Soft/Hard Joint Nut	960-050-0
14) Battery Pack	P50AAFT6PK
15) Transducer	836-329-3
16) LED Display	836-991-9SP
17) 24 Leg IC	836-992-9SP
18) Charger Connector	836-922-3
19) Zero Adjust Pot.	836-918-3
20) Calibration Switch	
21) On/Off Switch	836-917-3
22) Reset Switch	836-916-3
23) PCB for Unit	Repairable Item