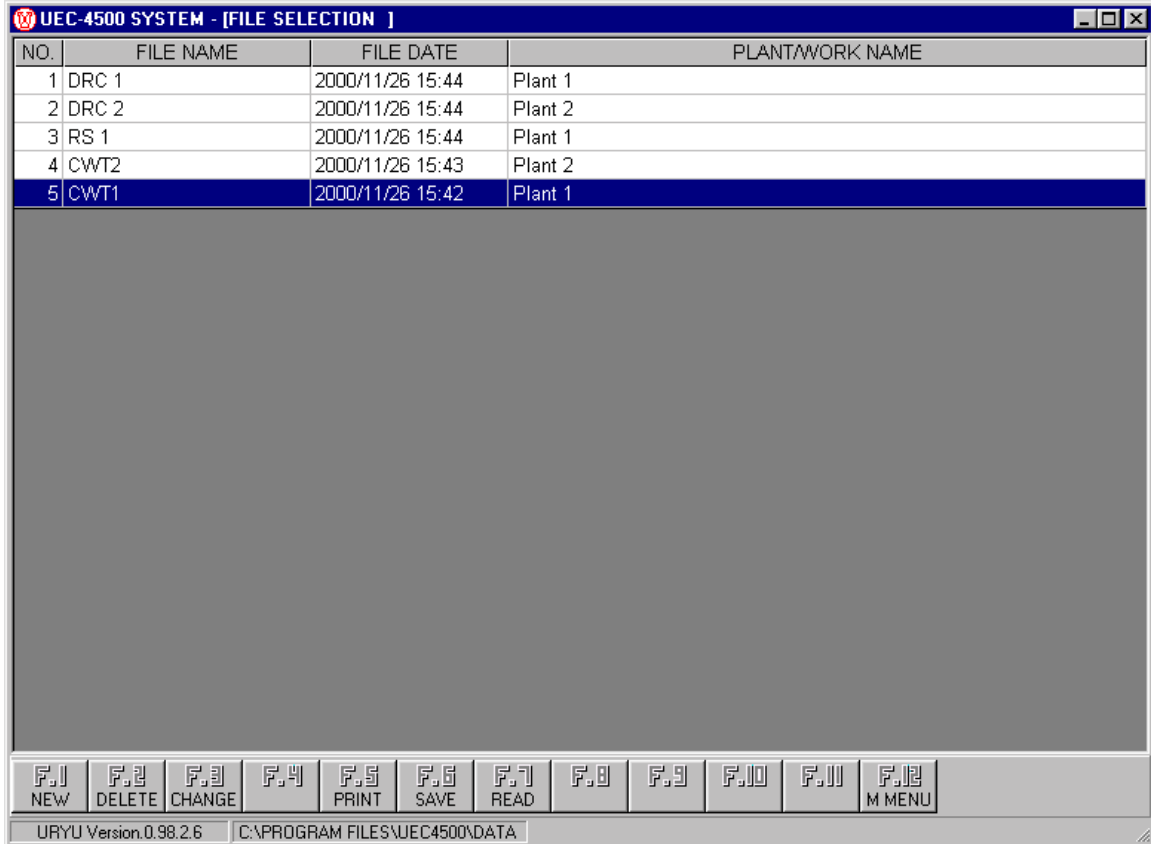


URYU UEC-4500

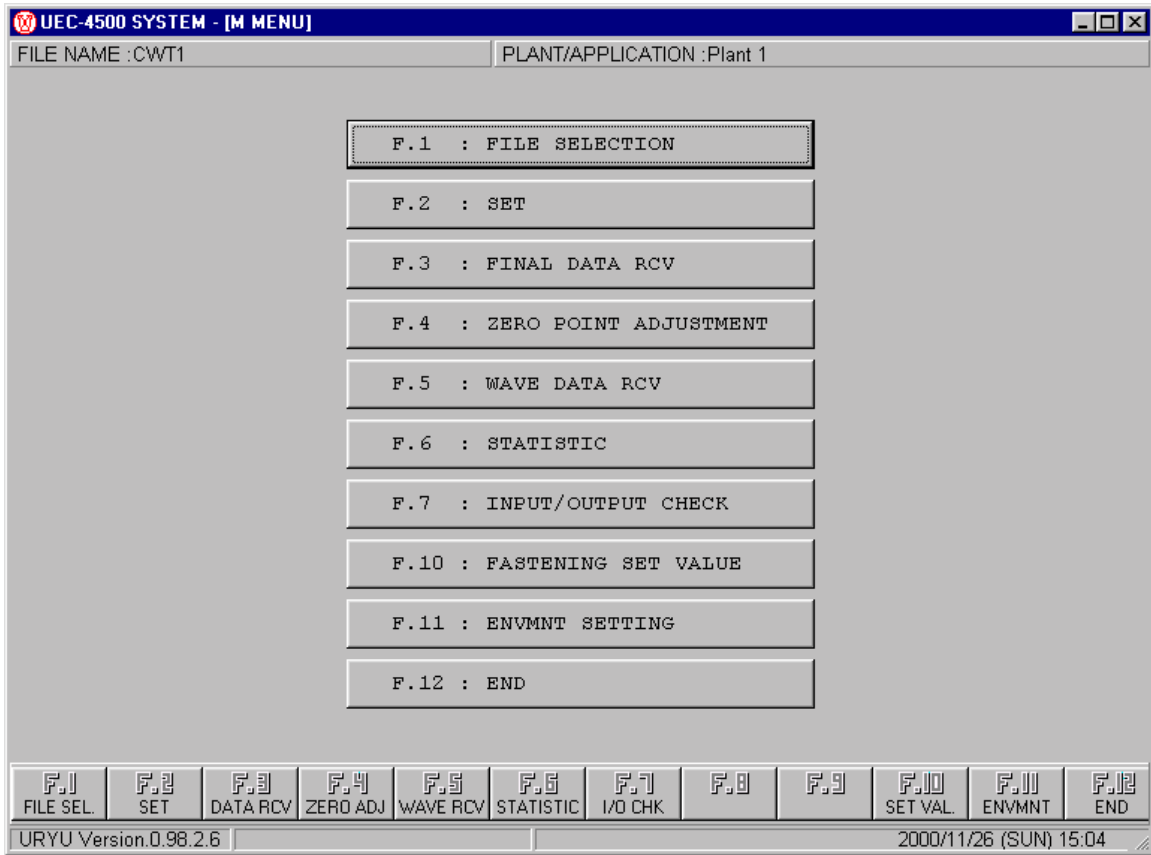
Basic Programming With PC

Step 1—Create Or Select A File

Once communication is successful, the following screen will appear. When the Uryu software is first used on a given computer, there will be no entries in the grid. If previous files of settings have been created, they will be shown. You must create at least one file to be able to program the unit.

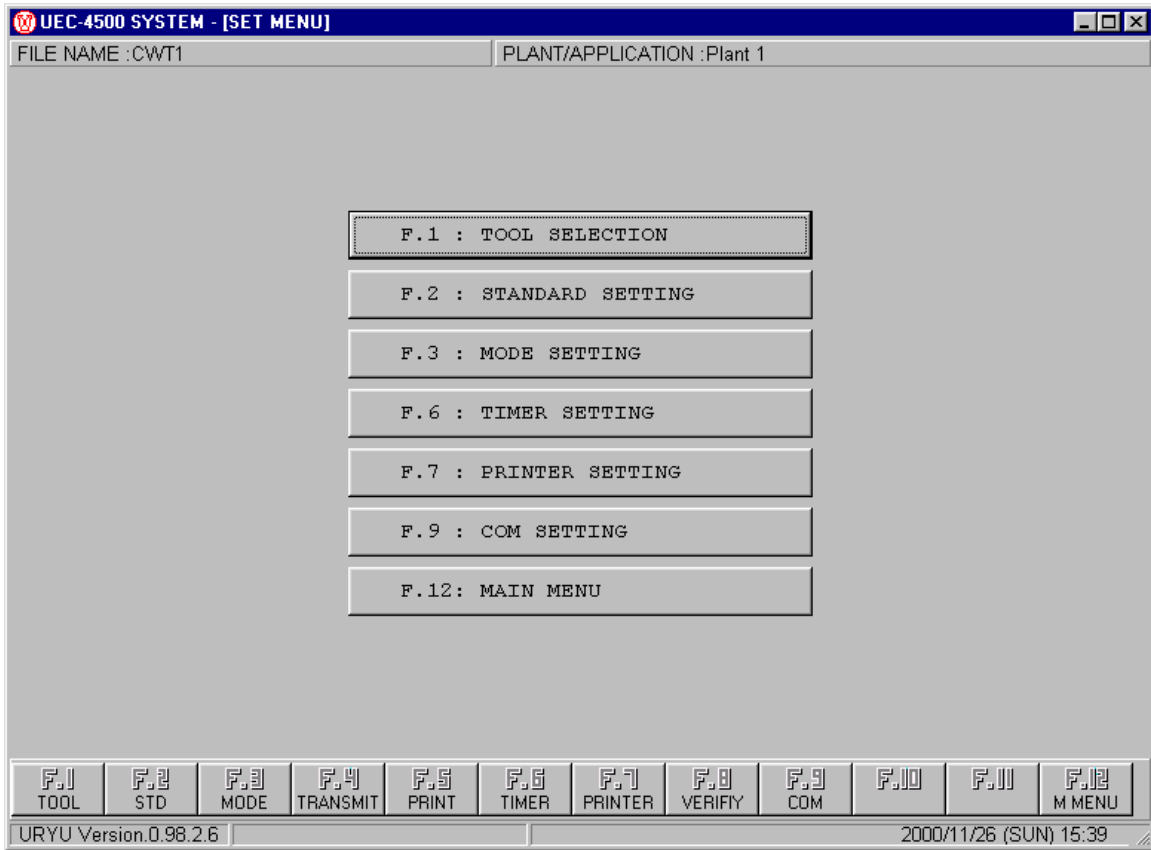


Once you select or create a new file, you will be taken to the "Main Menu" screen.



Step 2–Begin Setting

Press F2 or Click on "Set" button. This takes you to the "Set Menu".



Step 3– Tool Selection

Press F1 or Click on the "Tool Selection" button to go to the "Tool Selection" page.

SP No.	TOOL NAME		CAL VALUE	SENSOR 1		SENSOR 2
1	U-50EC	SELECT	280	700	X	750
2		SELECT			X	

F.1 F.2 DEL F.3 F.4 F.5 PRINT F.6 F.7 F.8 F.9 F.10 F.11 F.12 SET MENU

URYU Version.0.98.2.6 2000/11/26 (SUN) 15:41

Press the "Select" button...

and the following screen appears.

UEC-4500 SYSTEM - [TOOL LIST]				
MODEL	CAL	CUT	SENSOR 1	SENSOR 2
ALPHA-50DMC	200	10.0	---	---
ALPHA-50MC	200	10.0	---	---
ALPHA-60DMC	200	15.0	---	---
ALPHA-60MC	200	15.0	---	---
ALPHA-60SDMC	200	18.0	---	---
ALPHA-60SMC	200	18.0	---	---
ALPHA-70MC	400	20.0	---	---
ALPHA-80MC	400	30.0	---	---
ALPHA-90MC	600	40.0	---	---
ALPHA-100MC	800	60.0	---	---
ALPHA-101MC	800	60.0	---	---
ALPHA-110MC	1200	70.0	---	---
ALPHA-130MC	1500	110.0	---	---
ALPHA-140MC	3000	180.0	---	---
ALPHA-1820MC	3000	200.0	---	---
ALPHA-2000MC	4500	340.0	---	---
U-50DEC	280	10.0	700	750
U-50EC	280	10.0	700	750
U-50SDEC	280	10.0	700	750

OK NEW FILE CHANGE DELETE CANCEL

This is a listing of all Uryu EC and MC tools with default set up values. Select by clicking a tool model for your application. Then Click OK. And return to "Set Menu" by pressing F12 or Clicking on the "Set Menu" button.

Step 4–Standard Settings

UEC-4500 SYSTEM - [STANDARD SETTING]

FILE NAME : CWT1 PLANT/APPLICATION : Plant 1

SP: NO. 1 TORQUE UNIT:N.m

SET ITEMS	SET CONTENT	WORK 1	WORK 2	WORK 3	WORK 4
	APPLICATION SELECTION	ON	ON	ON	ON
LOW	MIN. TORQUE VALUE (0.0 - 980.4)	5.0	5.0	5.0	5.0
HIGH	MAX. TORQUE VALUE (0.2 - 980.6)	15.0	15.0	15.0	15.0
CUT	CUT TORQUE VALUE (0.1 - 980.5)	10.0	10.0	10.0	10.0
CAL	RATED TORQUE SENSOR(100-9999)	280	280	280	280
SENSOR 1	TRQ SENSOR RESISTANCE(350,480,700)	700			
SENSOR 2	RATED STRAIN x 10 ⁻⁶ (100-4400)	750	750	750	750
START	START TORQUE VALUE (0.1 - 980.4)	3.0	3.0	3.0	3.0
COUNT	TIGHTENING NUMBERS (1-99)	99	99	99	99

F.1 SP No.1
F.2 SP No.2
F.3
F.4 TRANSMIT
F.5 PRINT
F.6 WK COPY
F.7 PASTE
F.8
F.9
F.10
F.11
F.12 SET MENU

URYU Version.0.98.2.6 2000/11/26 (SUN) 15:06

Keep or modify settings as needed.

Step 5–Mode Settings

UEC-4500 SYSTEM - [MODE SETTING]

FILE NAME : CWT1 PLANT/APPLICATION : Plant 1

SP: NO. 1 TORQUE UNIT: N.m

MODE	SET CONTENT	WORK 1	WORK 2	WORK 3	WORK 4
1	INITIAL ERROR(LO.E.) 0: NOT USE 1: USE	0	0	0	0
2	CYCLE TIME ERROR(CYL.E.) 0: NOT USE 1: USE	0	0	0	0
3	RESTART WHEN NOK 0: NOT USE 1: USE	1	1	1	1
4	RESTART WHEN LOW/HI NOK 0: NOT USE 1: USE	1	1	1	1
5	FASTENING ERROR(F.E.) 0: NOT USE 1: USE	0	0	0	0
6	WHEN CYCLE TIMER IS UP SOLENOID OUTPUT 0: NOT USE 1: USE	0	0	0	0
9	FUNCTION MODE 1: TORQUE MONITORING 2: TORQUE CONTROL 3: MC/EC WRENCHES TORQUE CONTROL 4: TORQUE & ANGLE MONITORING 5: TORQUE CONTROL/ANGLE MONITORING 6: ANGLE CONTROL/TORQUE MONITORING 8: TENSION CONTROL 9: T-TYPE WRENCHES' TORQUE	3	3	3	3
10	DPM DIGIT ON TORQUE 0: NO POINT 1: 1ST DIGIT POINT 2: 2ND DIGIT POINT 3: 3RD DIGIT POINT	0	0	0	0

F.1 SP No.1
F.2 SP No.2
F.3
F.4 TRANSMIT
F.5 PRINT
F.6 WK COPY
F.7 PASTE
F.8
F.9
F.10
F.11
F.12 SET MENU

URYU Version.0.98.2.6 2000/11/26 (SUN) 15.09

Be sure to scroll down to cover all possible settings...

UEC-4500 SYSTEM - [MODE SETTING]

FILE NAME : CWT1 PLANT/APPLICATION : Plant 1

SP: NO. 1 | TORQUE UNIT:N.m

MODE	SET CONTENT	WORK 1	WORK 2	WORK 3	WORK 4
11	SELECTION OF EXTERNAL START 0: NOT USE EXTERNAL START 1: Z/C CHECK+VALVE+OUTPUT+START 2: Z/C CHECK+START 3: VALVE+OUTPUT+START	0	0	0	0
14	FASTENING COUNT FUNCTION 0: LS1 (JUDGE) 1: LS1 (START), LS2 (JUDGE) 2: STARTING AFTER T50 ON LS1 3: AFTER T50 ON 1ST FASTENING 4: W.SEL.ON (START), W.SEL.OFF (JDG)		0		
15	FASTENING CEHCK BUZZER 0: NOT USE 1: USE	0	0	0	0
16	START LEVEL ERROR 0: NOT USE (S.L..E.) DETECTION 1: USE	0	0	0	0
17	CYCLE OVER TIME 0: NOT USE ERROR(CY.O.E.) DETCTION 1: USE	0	0	0	0
21	ANGLE PULSE RATE	100	100	100	100
22	ANGLE MONITOR UPPER LIMIT	0	0	0	0
23	ANGLE MONITOR LOWER LIMIT	999	999	999	999
24	SNAG TORQUE	4.0	4.0	4.0	4.0
25	ANGLE CUT	200	200	200	200
27	TORQUE CUT CORRECTION(1-5)	1	1	1	1

F1 SP No.1 F2 SP No.2 F3 F4 TRANSMIT F5 PRINT F6 WK COPY F7 PASTE F8 F9 F10 F11 F12 SET MENU

URYU Version.0.98.2.6 2000/11/26 (SUN) 15:09

UEC-4500 SYSTEM - [MODE SETTING]

FILE NAME : CWT1 PLANT/APPLICATION : Plant 1

SP: NO. 1 | TORQUE UNIT:N.m

MODE	SET CONTENT	WORK 1	WORK 2	WORK 3	WORK 4
28	SELECTION OF TORQUE UNIT 0:N.m 1:kgf.cm 2:kgf.m 3:ft.lbf 4:in.lbf		0		
29	SELECTION OF INPUT BOARD CONTENT 0:COMBINATION OF WORK1-1 AND 1-2 1:COMBINATION OF WORK1-1 to 1-4		0		
30	SELECTION OF OUTPUT BOARD CONTENT 0:TRQ,COUNT OK/NOK ON EVERY SP 1:COUNT OK ON EVERY WORK SELECT		0		
31	FASTENING SELECTION. 0: NOT USE 1: USE	1	1	1	1
34	PULSE NUMBER LOWER LIMIT	2	2	2	2
35	PULSE NUMBER UPPER LIMIT	100	100	100	100
36	TENSION LOWER LIMIT	10.0	10.0	10.0	10.0
37	TENSION UPPER LIMIT	999.9	999.9	999.9	999.9
38	TENSION CUT VALUE	20.0	20.0	20.0	20.0
39	SELECTION OF TENSION 0: NOT USE 1: USE	0	0	0	0

F1 SP No.1 F2 SP No.2 F3 F4 TRANSMIT F5 PRINT F6 WK COPY F7 PASTE F8 F9 F10 F11 F12 SET MENU

URYU Version.0.98.2.6 2000/11/26 (SUN) 15:10

Step 6–Timer Settings

FILE NAME : CWT1 PLANT/APPLICATION : Plant 1
 SP: NO. 1

TIMER	SET CONTENT	WORK 1	WORK 2	WORK 3	WORK 4
1	JUDGEMENT DELAY TIMER [ms]	300	300	300	300
2	INITIAL ERROR DETECTION TIMER[ms]	500	500	500	500
3	CYCLE ERROR DETECTION TIMER [ms]	5000	5000	5000	5000
4	TORQUE ANGLE OK OUTPUT TIMER [ms]	9999			
5	COUNT OK OUTPUT TIMER [ms]	9999			
6	TORQUE READING START DELAY TIMER [ms]	20	20	20	20
7	START LEVEL ERROR DETECTION TIMER [ms]	500	500	500	500
8	CYCLE OVER DETECTION TIMER [ms]	9999	9999	9999	9999
20	VALVE RESTART DETECTION TIMER[ms]	300	300	300	300
21	REVERSE COMPLETION DELAY TIMER [ms]	300	300	300	300
50	LINE CONTROL TIMER [s]	100			

F.1 SP No.1 F.2 SP No.2 F.3 TRANSMIT F.4 PRINT F.5 WK COPY F.6 PASTE F.7 F.8 F.9 F.10 F.11 F.12 SET MENU

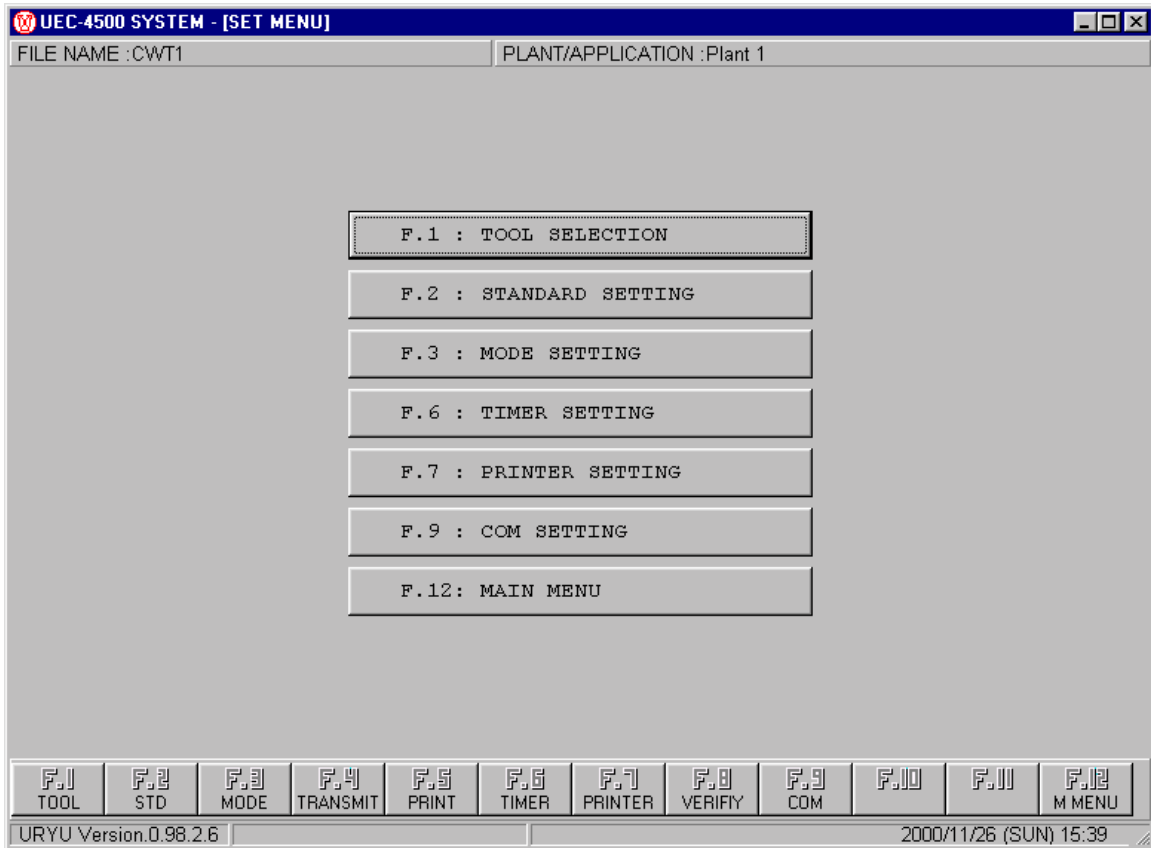
URYU Version.0.98.2.6 2000/11/26 (SUN) 15:15

F12 or Click "Set Menu" to return to "Set Menu".

At this point, if you have an optional Printer board or optional RS-232C board installed, you can continue with the settings for those items.

Step 7-Download To UEC-4500

From the "Set Menu" page, press F4 or Click on the "Transmit" button.



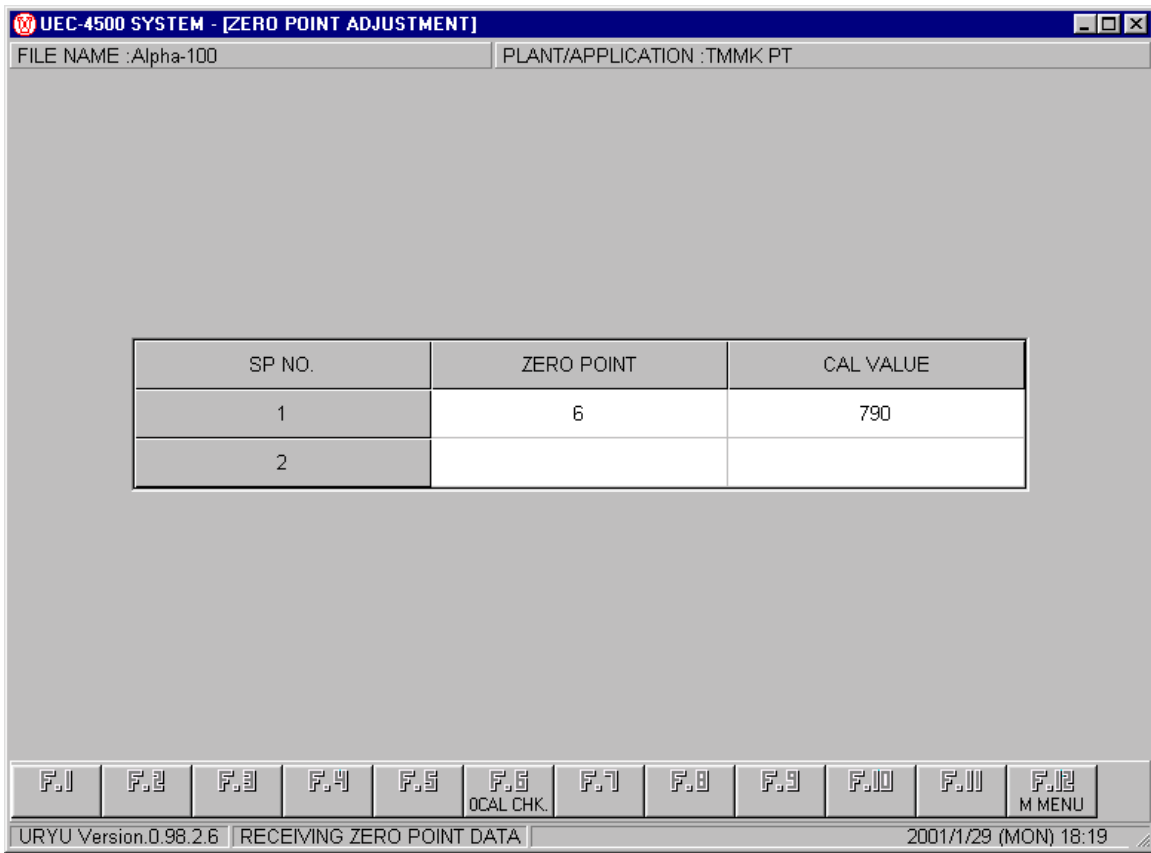
This will send all settings to the unit. The display will indicate

! P c dn

while exchanging the information. This will be followed by **FL.** (for "Flash Loading") when completed.

Step 8– Zero/Cal Check

Press F12 or Click "M Menu" to go back to "Main Menu". Then press F4 or Click on the "Zero Point Adjustment" button.



Press F6 or Click "OCAL CHK" to start check. The UEC-4500 display will flash

! P c UP

Press F12 or Click "M MENU" to end checking.

Congratulations, you have successfully completed the basic set up of the UEC-4500!!!