

MANUFACTURERS OF PRECISION-MADE
POLYURETHANE SPIRAL HOSE & TUBING



**ADVANCED
TECHNOLOGY
PRODUCTS**

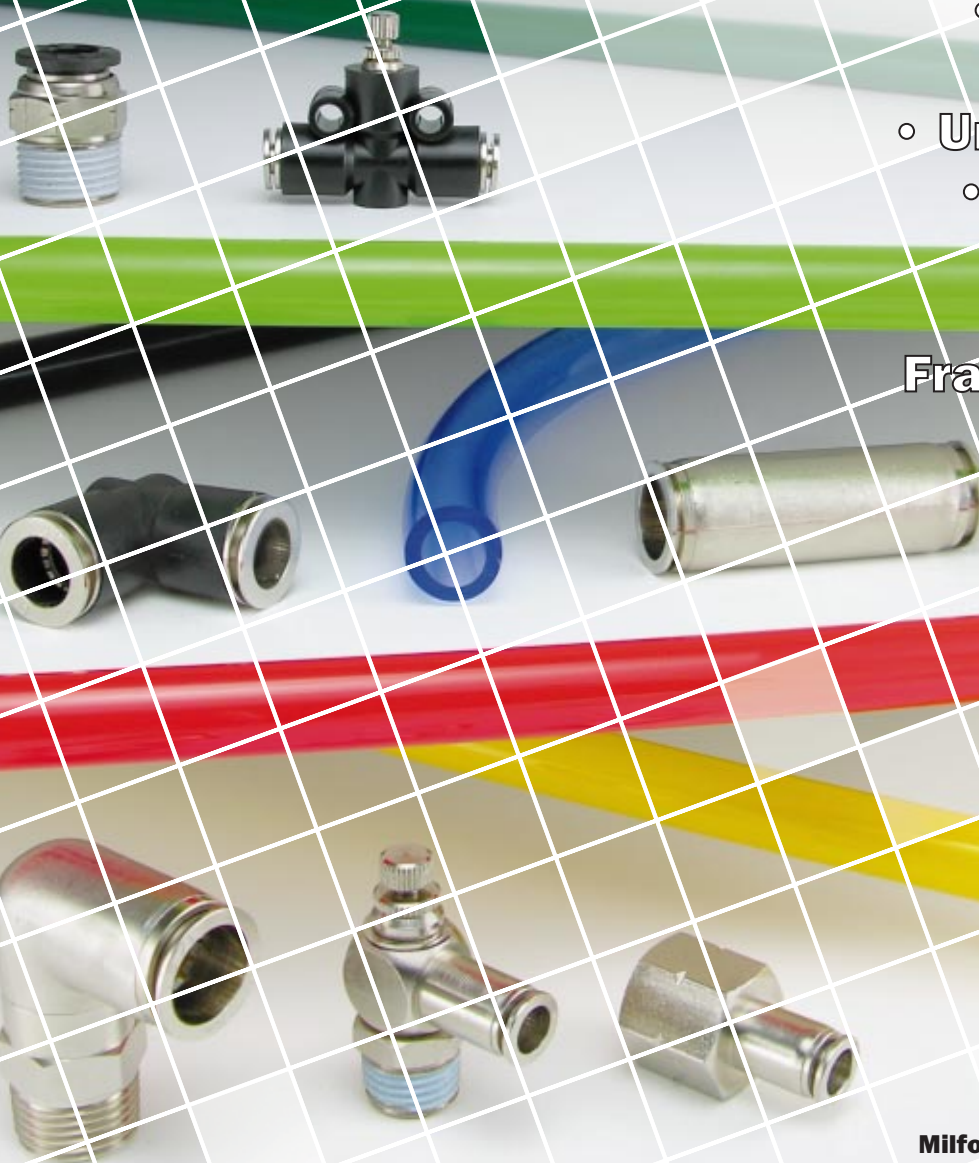
Technifit™

Push-to-Connect Fittings

March 2006

- Male • Female
- Elbow • Tee
- Union • Bulkhead
- Flow Controller

Fractional & Metric



PO Box 335
12740 State Route 4
Milford Center, Ohio 43045-0335 USA
Phone: 937.349.4055
Fax: 937.349.4155
E-mail: info@atp4pneumatics.com
www.atp4pneumatics.com



MANUFACTURERS OF PRECISION-MADE
POLYURETHANE SPIRAL HOSE & TUBING



Item Description	Fractional Page	Metric Page
Male Straight	3	13
Male Straight—Hex Hole	3	13
Female Straight	4	14
Long Male Elbow	4	14
Male Elbow	5	15
Male Tee	6	16
Male Run Tee	7	17
Union	8	18
Different Diameter Union	8	18
Union Elbow	8	18
Union Tee	8,9	18,19
Union Y	9	19
Branch Y	9	19
Bulkhead Union	10	20
Female Bulkhead	10	20
Male Elbow Flow Controller	11	21
Dual Axis Flow Controller	11	21
In-Line Flow Controller	12	22

This catalog represents a large selection of the most common models, sizes and materials. Additional models and sizes—including stainless materials and Viton® seals—are available with longer lead times. Please contact ATP with your specific requirements.

ATP recommends our Precision-Made Polyurethane, Nylon & Polyethylene Tubing for use with our **Technifit™** products. All are made to extremely tight tolerances to eliminate leaks.

Our Tubing Catalog, as well as all of our most current product catalogs are available for download from our website in PDF format. Visit us today—www.atp4pneumatics.com

Technical Specifications

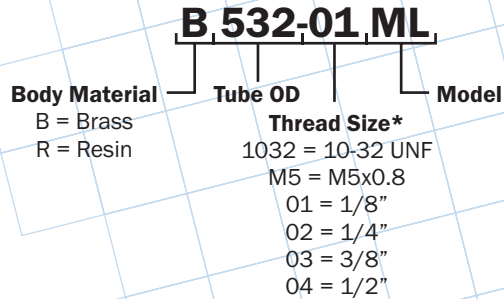
Brass Body Fittings

Material	Nickel-Plated Brass
Packing & O-Ring Seal	NBR
Gripping Mechanism	Stainless Steel
Temperature Range	32° to 176°F
Pressure Range	0 - 150 PSI
Vacuum	29.5" Hg
Media	Air

Resin Body Fittings

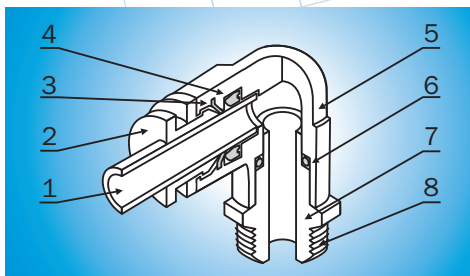
Material	POM (Polyoxymethylene)
Packing & O-Ring Seal	NBR
Gripping Mechanism	Stainless Steel
Temperature Range	32° to 140°F
Pressure Range	0 - 150 PSI
Vacuum	29.5" Hg
Media	Air

Part Numbering System



*Fractional tubing sizes are NPT thread.
Metric tubing sizes are BSPT thread.

Construction



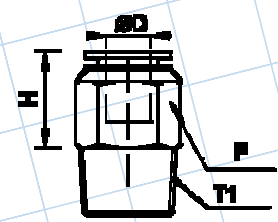
1	ATP Tubing
2	Metal Release Ring
3	Gripping Mechanism
4	Packing (NBR)
5	Body Material
6	O-Ring (NBR)
7	Body Material
8	Thread Sealant (NPT sealant is blue. BSPT sealant is white.)

Viton® is a registered trademark of DuPont Performance Elastomers.

Fractional Straight Male – NPT Thread

Brass

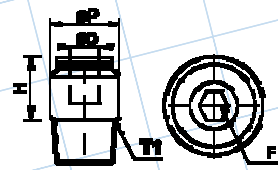
Part Number	ØD	T1 NPT	F	H
B532-1032M	5/32	10-32 UNF	8	17
B532-01M	5/32	1/8	10	9.5
B532-02M	5/32	1/4	14	10.5
B14-1032M	1/4	10-32 UNF	10	17
B14-01M	1/4	1/8	10	13
B14-02M	1/4	1/4	14	9.5
B14-03M	1/4	3/8	17	9.5
B516-01M	5/16	1/8	12	16
B516-02M	5/16	1/4	14	13
B516-03M	5/16	3/8	17	10
B38-01M	3/8	1/8	14	18
B38-02M	3/8	1/4	14	18
B38-03M	3/8	3/8	17	13.5
B38-04M	3/8	1/2	21	10.5
B12-02M	1/2	1/4	17	18
B12-03M	1/2	3/8	17	13.5
B12-04M	1/2	1/2	20	10.5



Fractional Straight Male, Hex Hole – NPT Thread

Brass

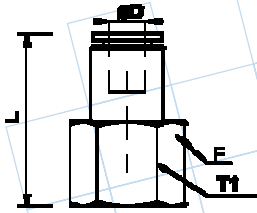
Part Number	ØD	T1 NPT	ØP	H	F
B532-1032MH	5/32	10-32 UNF	8	17	2
B532-01MH	5/32	1/8	10	9.5	3
B532-02MH	5/32	1/4	14	10.5	3
B14-1032MH	1/4	10-32 UNF	10	17	2
B14-01MH	1/4	1/8	10	13	4
B14-02MH	1/4	1/4	14	19	5
B14-03MH	1/4	3/8	17	17	5
B516-01MH	5/16	1/8	12	16	5
B516-02MH	5/16	1/4	14	13	6
B516-03MH	5/16	3/8	17	10	6
B38-02MH	3/8	1/4	14	18	6
B38-03MH	3/8	3/8	14	13.5	8
B12-02MH	1/2	1/4	17	18	8
B12-03MH	1/2	3/8	17	13.5	8



Tightens with an allen wrench for installation in limited spaces.

Fractional Straight Female – NPT Thread

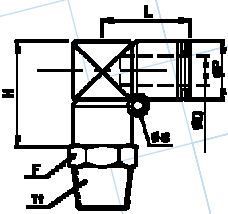
Brass



Part Number	ØD	T1 NPT	F	L
B532-01F	5/32	1/8	14	23.8
B532-02F	5/32	1/4	17	26.8
B14-01F	1/4	1/8	14	23.8
B14-02F	1/4	1/4	17	26.8
B14-03F	1/4	3/8	21	27.8
B516-01F	5/16	1/8	14	23.8
B516-02F	5/16	1/4	17	26.8
B38-02F	3/8	1/4	17	28.3
B38-03F	3/8	3/8	21	29.3
B38-04F	3/8	1/2	24	34
B12-02F	1/2	1/4	17	28.3
B12-03F	1/2	3/8	21	29.3
B12-04F	1/2	1/2	24	34

Fractional Long Male Elbow – NPT Thread

Resin

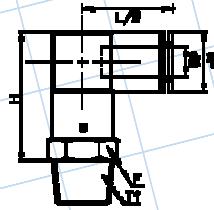


Part Number	ØD	T1 NPT	F	ØP	L	H	Ød
R532-1032M2L	5/32	10-32 UNF	10	10	22.5	24.5	4.3
R532-01M2L	5/32	1/8	10	10	22.5	25.5	4.3
R532-02M2L	5/32	1/4	14	10	22.5	25.5	4.3
R14-1032M2L	1/4	10-32 UNF	12	12	25	26.5	4.3
R14-01M2L	1/4	1/8	12	12	25	27.5	4.3
R14-02M2L	1/4	1/4	14	12	25	27.5	4.3
R14-03M2L	1/4	3/8	17	12	25	27.5	4.3
R516-01M2L	5/16	1/8	14	12	27	30	4.3
R516-02M2L	5/16	1/4	14	12	27	30	4.3
R516-03M2L	5/16	3/8	17	12	27	30	4.3
R38-01M2L	3/8	1/8	17	16	31	34.5	4.3
R38-02M2L	3/8	1/4	17	16	31	34.5	4.3
R38-03M2L	3/8	3/8	17	16	31	34.5	4.3
R38-04M2L	3/8	1/2	21	16	31	34.5	4.3
R12-02M2L	1/2	1/4	19	21	35.5	38.5	4.3
R12-03M2L	1/2	3/8	21	21	35.5	38.5	4.3
R12-04M2L	1/2	1/2	21	21	35.5	38.5	4.3

Fractional Male Elbow – NPT Thread

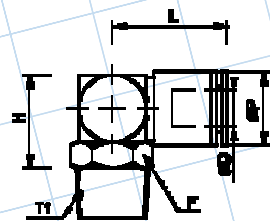
Brass

Part Number	ØD	T1 NPT	F	ØP	L/2	H
B532-1032ML	5/32	10-32 UNF	12	10	21	26
B532-01ML	5/32	1/8	12	10	21	27
B532-02ML	5/32	1/4	14	10	21	27
B14-1032ML	1/4	10-32 UNF	14	10	21	26
B14-01ML	1/4	1/8	12	10	21	27
B14-02ML	1/4	1/4	14	10	21	27
B14-03ML	1/4	3/8	17	10	21	30
B516-01ML	5/16	1/8	14	12	22	30
B516-02ML	5/16	1/4	14	12	22	30
B516-03ML	5/16	3/8	17	12	22	30
B38-01ML	3/8	1/8	17	14	23	32
B38-02ML	3/8	1/4	17	14	23	32
B38-03ML	3/8	3/8	17	14	23	32
B38-04ML	3/8	1/2	17	14	23	32
B12-02ML	1/2	1/4	19	17	26.5	35
B12-03ML	1/2	3/8	21	17	26.5	35
B12-04ML	1/2	1/2	21	17	26.5	35



Resin

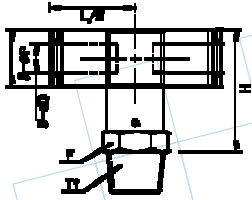
Part Number	ØD	T1 NPT	F	ØP	L	H
R532-1032ML	5/32	10-32 UNF	10	10	19	15
R532-01ML	5/32	1/8	10	10	19	14
R532-02ML	5/32	1/4	14	10	19	14
R14-1032ML	1/4	10-32 UNF	10	12	19.5	15
R14-01ML	1/4	1/8	10	12	21	14
R14-02ML	1/4	1/4	14	14	22.5	17
R14-03ML	1/4	3/8	17	14	22.5	21
R516-01ML	5/16	1/8	14	14	21	17
R516-02ML	5/16	1/4	14	14	21	17
R516-03ML	5/16	3/8	17	14	22.5	21
R38-01ML	3/8	1/8	17	16	24	21
R38-02ML	3/8	1/4	17	16	24	21
R38-03ML	3/8	3/8	17	16	24	21
R12-02ML	1/2	1/4	19	19	26.5	25
R12-03ML	1/2	3/8	19	19	26.5	25
R12-04ML	1/2	1/2	21	19	26.5	25



Fractional Male Tee – NPT Thread

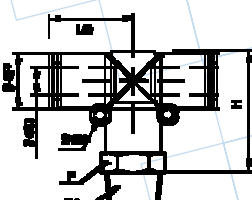
Brass

Part Number	ØD	T1 NPT	F	ØP	L/2	H
B532-1032MT	5/32	10-32 UNF	12	10	18	26
B532-01MT	5/32	1/8	12	10	18	27
B532-02MT	5/32	1/4	14	10	18	27
B14-1032MT	1/4	10-32 UNF	12	10	18	26
B14-01MT	1/4	1/8	12	10	18	27
B14-02MT	1/4	1/4	14	10	18	27
B14-03MT	1/4	3/8	17	10	18	30
B516-01MT	5/16	1/8	14	12	19	30
B516-02MT	5/16	1/4	14	12	19	30
B516-03MT	5/16	3/8	17	12	19	30
B38-01MT	3/8	1/8	17	14	21	32
B38-02MT	3/8	1/4	17	14	21	32
B38-03MT	3/8	3/8	17	14	21	32
B38-04MT	3/8	1/2	21	14	21	32
B12-02MT	1/2	1/4	19	17	26.5	35
B12-03MT	1/2	3/8	21	17	26.5	35
B12-04MT	1/2	1/2	21	17	26.5	35



Resin

Part Number	ØD	T1 NPT	F	ØP	L/2	H	Ød
R532-1032MT	5/32	10-32 UNF	10	10	22.5	24.5	4.3
R532-01MT	5/32	1/8	10	10	22.5	25.5	4.3
R532-02MT	5/32	1/4	14	10	22.5	25.5	4.3
R14-1032MT	1/4	10-32 UNF	12	12	25	26.5	4.3
R14-01MT	1/4	1/8	12	12	25	27.5	4.3
R14-02MT	1/4	1/4	14	12	25	27.5	4.3
R14-03MT	1/4	3/8	17	12	25	27.5	4.3
R516-01MT	5/16	1/8	14	14	27	30	4.3
R516-02MT	5/16	1/4	14	14	27	30	4.3
R516-03MT	5/16	3/8	17	14	27	30	4.3
R38-01MT	3/8	1/8	17	16	31	34.5	4.3
R38-02MT	3/8	1/4	17	16	31	34.5	4.3
R38-03MT	3/8	3/8	17	16	31	34.5	4.3
R38-04MT	3/8	1/2	21	16	31	34.5	4.3
R12-02MT	1/2	1/4	19	21	35.5	38.5	4.3
R12-03MT	1/2	3/8	21	21	35.5	38.5	4.3
R12-04MT	1/2	1/2	21	21	35.5	38.5	4.3

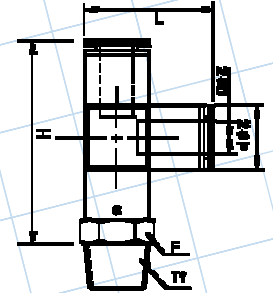
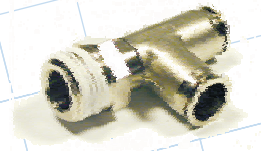


Fractional
Page 6

Fractional Male Run Tee – NPT Thread

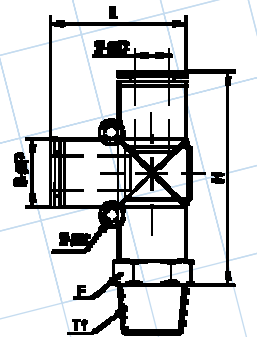
Brass

Part Number	ØD	T1 NPT	F	ØP	L	H
B532-1032RT	5/32	10-32 UNF	12	10	23	34
B532-01RT	5/32	1/8	12	10	23	35
B532-02RT	1/4	1/4	14	10	23	35
B14-1032RT	1/4	10-32 UNF	12	10	23	34
B14-01RT	1/4	1/8	12	10	23	35
B14-02RT	1/4	1/4	14	10	23	35
B14-03RT	1/4	3/8	17	10	23	35
B516-01RT	5/16	1/8	14	12	25	39
B516-02RT	5/16	1/4	14	12	25	39
B516-03RT	5/16	3/8	17	12	25	39
B38-01RT	3/8	1/8	17	14	28	44
B38-02RT	3/8	1/4	17	14	28	44
B38-03RT	3/8	3/8	17	14	28	44
B38-04RT	3/8	1/2	21	14	28	44
B12-02RT	1/2	1/4	19	17	35	53
B12-03RT	1/2	3/8	21	17	35	53
B12-04RT	1/2	1/2	21	17	35	53



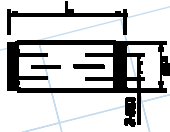
Resin

Part Number	ØD	T1 NPT	F	ØP	L	H	Ød
R532-1032RT	5/32	10-32 UNF	10	10	22.5	34	4.3
R532-01RT	5/32	1/8	10	10	22.5	35	4.3
R532-02RT	5/32	1/4	14	10	22.5	35	4.3
R14-1032RT	1/4	10-32 UNF	12	12	25	38.5	4.3
R14-01RT	1/4	1/8	12	12	25	39.5	4.3
R14-02RT	1/4	1/4	14	12	25	39.5	4.3
R14-03RT	1/4	3/8	17	12	25	39.5	4.3
R516-01RT	5/16	1/8	14	14	27	42.5	4.3
R516-02RT	5/16	1/4	14	14	27	42.5	4.3
R516-03RT	5/16	3/8	17	14	27	42.5	4.3
R38-01RT	3/8	1/8	17	16	31	47	4.3
R38-02RT	3/8	1/4	17	16	31	47	4.3
R38-03RT	3/8	3/8	17	16	31	47	4.3
R38-04RT	3/8	1/2	21	16	31	47	4.3
R12-02RT	1/2	1/4	19	21	35.5	55.5	4.3
R12-03RT	1/2	3/8	21	21	35.5	55.5	4.3
R12-04RT	1/2	1/2	21	21	35.5	55.5	4.3



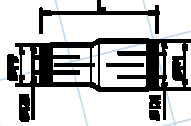
Fractional Unions

Straight Union • Brass



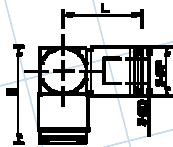
Part Number	ØD	ØP	L
B532U (4mm)	5/32	8	31.6
B14U	1/4	10	32.6
B516U (8mm)	5/16	12	32.6
B38U	3/8	14	36.6
B12U	1/2	17	37.6

Different Union • Brass



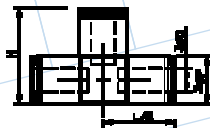
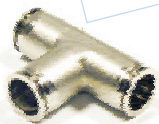
Part Number	ØD1	ØD2	ØP1	ØP2	L
B14-532U	1/4	5/32	10	8	32.1
B516-14U	5/16	1/4	12	10	32.6
B38-516U	3/8	5/16	14	12	34.6
B12-38U	1/2	3/8	17	14	37.1

Union Elbow • Brass



Part Number	ØD	ØP	L/2	H
B532UL (4mm)	5/32	10	18	23
B14UL	1/4	10	18	23
B516UL (8mm)	5/16	12	19	25
B38UL	3/8	14	21	28
B12UL	1/2	17	26.5	35

Union Tee • Brass

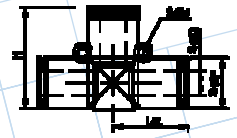


Part Number	ØD	ØP	L/2	H
B532UT (4mm)	5/32	10	21	26
B14UT	1/4	10	21	26
B516UT (8mm)	5/16	12	22	28
B38UT	3/8	14	23	30
B12UT	1/2	17	26.5	35

Fractional Unions

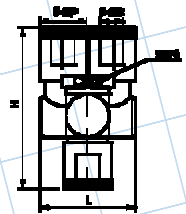
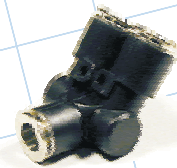
Union Tee • Resin

Part Number	ØD	ØP	L/2	H	Ød
R532UT (4mm)	5/32	10	17	22.5	4.3
R14UT	1/4	12	19.5	25	4.3
R516UT (8mm)	5/16	14	21	27	4.3
R38UT	3/8	16	27	31	4.3
R12UT	1/2	21	37.5	35.5	4.3



Union Y • Resin

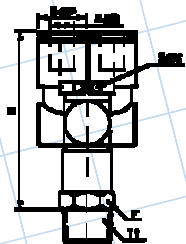
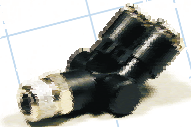
Part Number	ØD	ØP	L	H	Ød
R532UY (4mm)	5/32	10	25	45	3.3
R14UY	1/4	12	25	45	3.3
R516UY (8mm)	5/16	14	29	47.5	3.3
R38UY	3/8	16	34.5	55	4.3



Center axis allows independent movement of each tube connection.

Branch Y • Resin

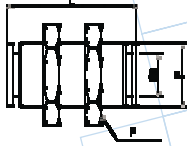
Part Number	ØD	T1 NPT	F	ØP	L	H	Ød
R532-1032BY	5/32	10-32UNF	10	12	25	46	3.3
R532-01BY	5/32	1/8	10	12	25	47	3.3
R532-02BY	5/32	1/4	14	12	25	46	3.3
R14-1032BY	1/4	10-32UNF	12	12	25	46	3.3
R14-01BY	1/4	1/8	12	12	25	47	3.3
R14-02BY	1/4	1/4	14	12	25	47	3.3
R14-03BY	1/4	3/8	17	12	25	47	3.3
R516-01BY	5/16	1/8	14	14	29	49	3.3
R516-02BY	5/16	1/4	14	14	29	49	3.3
R516-03BY	5/16	3/8	17	14	29	49	3.3
R38-02BY	3/8	1/4	17	16	33.5	59	4.3
R38-03BY	3/8	3/8	17	16	33.5	59	4.3
R38-04BY	3/8	1/2	21	16	33.5	59	4.3



Center axis allows independent movement of both tube connections.

Fractional Bulkhead Union

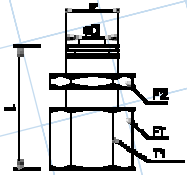
Brass



Part Number	ØD	P	F	L
B532BU (4MM)	5/32	12	14	31
B14BU	1/4	14	17	31
B516BU (8MM)	5/16	16	19	31
B38BU	3/8	20	24	37
B12BU	1/2	22	27	44

Fractional Female Bulkhead – NPT Thread

Brass

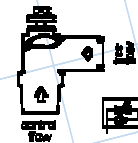
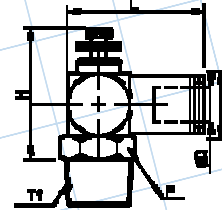


Part Number	ØD	T1 NPT	F1	F2	P	L
B532-01FB	5/32	1/8	14	14	12	28
B532-02FB	5/32	1/4	17	14	12	30
B14-01FB	1/4	1/8	17	17	14	31
B14-02FB	1/4	1/4	17	17	14	31
B14-03FB	1/4	3/8	21	17	14	32
B516-01FB	5/16	1/8	17	17	14	31
B516-02FB	5/16	1/4	17	17	14	31
B516-03FB	5/16	3/8	21	21	16	32
B38-02FB	3/8	1/4	21	24	24	34
B38-03FB	3/8	3/8	21	24	24	34
B38-04FB	3/8	1/2	25	24	24	34
B12-02FB	1/2	1/4	25	27	27	37
B12-03FB	1/2	3/8	25	27	27	37
B12-04FB	1/2	1/2	25	27	27	37

Fractional Flow Controllers – NPT Thread

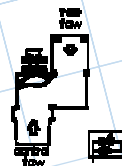
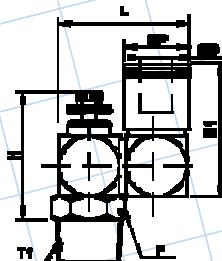
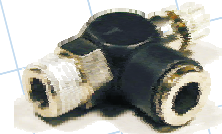
Male Elbow • Brass • Standard Flow • Meter Out

Part Number	ØD	T1 NPT	F	ØP	L	H
BSC532-1032-0	5/32	10-32 UNF	8	8	23	30
BSC532-01-0	5/32	1/8	10	8	23	31
BSC532-02-0	5/32	1/4	14	8	23	31
BSC14-1032-0	1/4	10-32 UNF	8	10	23.5	30
BSC14-01-0	1/4	1/8	12	10	26.5	34
BSC14-02-0	1/4	1/4	14	10	26.5	34
BSC14-03-0	1/4	3/8	17	1	30	34
BSC516-01-0	5/16	1/8	14	12	31	38
BSC516-02-0	5/16	1/4	14	12	31	38
BSC516-03-0	5/16	3/8	17	12	31	38
BSC38-02-0	3/8	1/4	19	14	37	46
BSC38-03-0	3/8	3/8	19	14	37	46
BSC38-04-0	3/8	1/2	21	14	37	46
BSC12-02-0	1/2	1/4	19	17	37	46
BSC12-03-0	1/2	3/8	19	17	37	46
BSC12-04-0	1/2	1/2	21	17	37	46



Male Elbow • Resin • Standard Flow • Meter Out

Part Number	ØD	T1 NPT	F	ØP	L	H
RSC532-01-0	5/32	1/8	10	10	23	31
RSC532-02-0	5/32	1/4	14	10	23	31
RSC14-01-0	1/4	1/8	12	14	26.5	34
RSC14-02-0	1/4	1/4	14	14	26.5	34
RSC516-01-0	5/16	1/8	14	14	31	38
RSC516-02-0	5/16	1/4	14	14	31	38
RSC516-03-0	5/16	3/8	17	14	31	38
RSC38-02-0	3/8	1/4	19	19	36	46
RSC38-03-0	3/8	3/8	21	19	36	46
RSC38-04-0	3/8	1/2	21	19	36	46
RSC12-02-0	1/2	1/4	19	19	36	46
RSC12-03-0	1/2	3/8	19	19	36	46
RSC12-04-0	1/2	1/2	21	19	36	46



Male Elbow • Resin • Full Flow • Meter Out

Part Number	ØD	T1 NPT	F	ØP	L	H
RSC14-01V-0	1/4	1/8	14	14	31	38
RSC14-02V-0	1/4	1/4	14	14	31	38
RSC516-01V-0	5/16	1/8	19	19	36	46
RSC516-02V-0	5/16	1/4	19	19	36	46
RSC516-03V-0	5/16	3/8	19	19	36	46

Fractional Flow Controllers – NPT Thread

Dual Axis • Brass & Resin • Standard Flow • Meter Out

Part Number	ØD	T1 NPT	F	ØP	L	H	H1
SCDA53201-0	5/32	1/8	10	10	23	31	23
SCDA53202-0	5/32	1/4	14	10	23	31	23
SCDA1401-0	1/4	1/8	12	14	26.5	34	26.5
SCDA1402-0	1/4	1/4	14	14	26.5	34	26.5
SCDA51601-0	5/16	1/8	14	14	31	38	31
SCDA51602-0	5/16	1/4	14	14	31	38	31
SCDA51603-0	5/16	3/8	17	14	31	38	31
SCDA3802-0	3/8	1/4	19	19	36	46	36
SCDA3803-0	3/8	3/8	21	19	36	46	36
SCDA3804-0	3/8	1/2	21	19	36	46	36
SCDA1202-0	1/2	1/4	19	19	36	46	36
SCDA1203-0	1/2	3/8	19	19	36	46	36
SCDA1204-0	1/2	1/2	21	19	36	46	36

Dual Axis • Brass & Resin • Full Flow • Meter Out

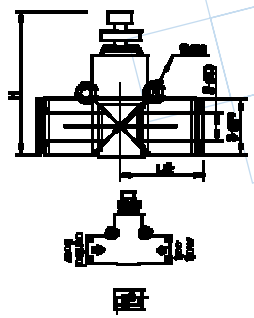
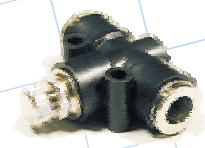
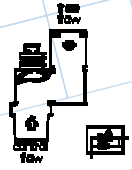
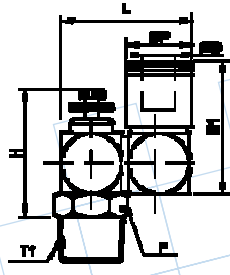
Part Number	ØD	T1 NPT	F	ØP	L	H	H1
SCDA14-01V-0	1/4	1/8	14	14	31	38	31
SCDA14-02V-0	1/4	1/4	14	14	31	38	31
SCDA516-01V-0	5/16	1/8	19	19	36	46	36
SCDA516-02V-0	5/16	1/4	19	19	36	46	36
SCDA516-03V-0	5/16	3/8	19	19	36	46	36

In-Line • Resin • Standard Flow

Part Number	ØD	ØP	L/2	H	Ød
SCU532 (4mm)	5/32	12	19.5	34.7	4.3
SCU14	1/4	14	21	38.1	4.3
SCU516 (8mm)	5/16	16	27	46.5	4.3
SCU38	3/8	21	37.5	48.8	4.3
SCU12	1/2	21	37.5	48.8	4.3

In-Line • Resin • Full Flow

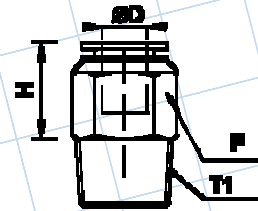
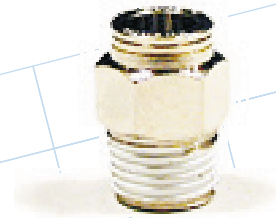
Part Number	ØD	ØP	L/2	H	Ød
SCU532V (4mm)	5/32	14	21	38.1	4.3
SCU14V	1/4	16	27	46.5	4.3
SCU516V (8mm)	5/16	21	37.5	48.8	4.3
SCU38V	3/8	21	37.5	48.8	4.3



Metric Straight Male – BSPT Thread

Brass

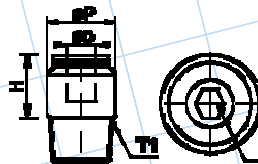
Part Number	ØD	T1 BSPT	F	H
B04-M5M	4mm	M5x0.8	8	17
B04-01M-PT	4mm	1/8	10	9.5
B04-02M-PT	4mm	1/4	14	10.5
B06-M5M	6mm	M5x0.8	10	17
B06-01M-PT	6mm	1/8	10	13
B06-02M-PT	6mm	1/4	14	9.5
B06-03M-PT	6mm	3/8	17	9.5
B08-01M-PT	8mm	1/8	12	16
B08-02M-PT	8mm	1/4	14	13
B08-03M-PT	8mm	3/8	17	10
B10-01M-PT	10mm	1/8	14	18
B10-02M-PT	10mm	1/4	14	18
B10-03M-PT	10mm	3/8	17	13.5
B12-02M-PT	12mm	1/4	17	18
B12-03M-PT	12mm	3/8	17	13.5
B12-04M-PT	12mm	1/2	21	10.5



Metric Straight Male, Hex Hole – BSPT Thread

Brass

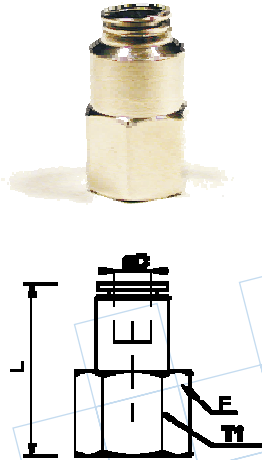
Part Number	ØD	T1 BSPT	ØP	H	F
B04-M5MH	4mm	M5x0.8	8	17	2
B04-01MH-PT	4mm	1/8	10	9.5	3
B04-02MH-PT	4mm	1/4	14	10.5	3
B06-M5MH	6mm	M5x0.8	10	17	2
B06-01MH-PT	6mm	1/8	10	13	4
B06-02MH-PT	6mm	1/4	14	19	5
B06-03MH-PT	6mm	3/8	17	17	5
B08-01MH-PT	8mm	1/8	12	16	5
B08-02MH-PT	8mm	1/4	14	13	6
B08-03MH-PT	8mm	3/8	17	10	6
B10-02MH-PT	10mm	1/4	14	18	6
B10-03MH-PT	10mm	3/8	17	13.5	8
B12-02MH-PT	12mm	1/4	17	18	8
B12-03MH-PT	12mm	3/8	17	13.5	8



Tightens with an allen wrench for installation in limited spaces.

Metric Straight Female – BSPT Thread

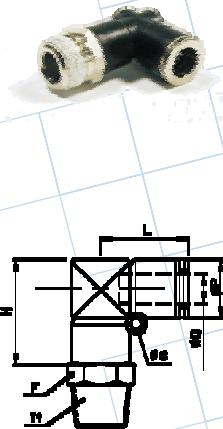
Brass



Part Number	ØD	T1 BSPT	F	L
B04-01F-PT	4mm	1/8	14	23.8
B04-02F-PT	4mm	1/4	17	26.8
B06-01F-PT	6mm	1/8	14	23.8
B06-02F-PT	6mm	1/4	17	26.8
B06-03F-PT	6mm	3/8	21	27.8
B08-01F-PT	8mm	1/8	14	23.8
B08-02F-PT	8mm	1/4	17	26.8
B08-03F-PT	8mm	3/8	21	27.8
B10-02F-PT	10mm	1/4	17	28.3
B10-03F-PT	10mm	3/8	21	29.3
B12-02F-PT	12mm	1/4	17	28.3
B12-03F-PT	12mm	3/8	21	29.3
B12-04F-PT	12mm	1/2	24	34

Metric Long Male Elbow – BSPT Thread

Resin

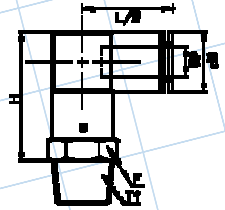


Part Number	ØD	T1 BSPT	F	ØP	L	H	Ød
R04-M5M2L	4mm	M5x0.8	10	10	22.5	24.5	4.3
R04-01M2L-PT	4mm	1/8	10	10	22.5	25.5	4.3
R04-02M2L-PT	4mm	1/4	14	10	22.5	25.5	4.3
R06-M5M2L	6mm	M5x0.8	12	12	25	26.5	4.3
R06-01M2L-PT	6mm	1/8	12	12	25	27.5	4.3
R06-02M2L-PT	6mm	1/4	14	12	25	27.5	4.3
R06-03M2L-PT	6mm	3/8	17	12	25	27.5	4.3
R08-01M2L-PT	8mm	1/8	14	14	27	30	4.3
R08-02M2L-PT	8mm	1/4	14	14	27	30	4.3
R08-03M2L-PT	8mm	3/8	17	14	27	30	4.3
R10-01M2L-PT	10mm	1/8	17	16	31	34.5	4.3
R10-02M2L-PT	10mm	1/4	17	16	31	34.5	4.3
R10-03M2L-PT	10mm	3/8	17	16	31	34.5	4.3
R12-02M2L-PT	12mm	1/4	19	21	35.5	38.5	4.3
R12-03M2L-PT	12mm	3/8	21	21	35.5	38.5	4.3
R12-04M2L-PT	12mm	1/2	21	21	35.5	38.5	4.3

Metric Male Elbow – BSPT Thread

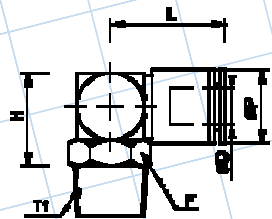
Brass

Part Number	ØD	T1 BSPT	F	ØP	L/2	H
B4-M5ML	4mm	M5x0.8	12	10	21	26
B04-01ML-PT	4mm	1/8	12	10	21	27
B04-02ML-PT	4mm	1/4	14	10	21	27
B06-M5ML	6mm	M5x0.8	12	10	21	26
B06-01ML-PT	6mm	1/8	12	10	21	27
B06-02ML-PT	6mm	1/4	14	10	21	27
B06-03ML-PT	6mm	3/8	17	10	21	27
B08-01ML-PT	8mm	1/8	14	12	22	30
B08-02ML-PT	8mm	1/4	14	12	22	30
B08-03ML-PT	8mm	3/8	17	12	22	30
B10-01ML-PT	10mm	1/8	17	14	23	32
B10-02ML-PT	10mm	1/4	17	14	23	32
B10-03ML-PT	10mm	3/8	17	14	23	32
B12-02ML-PT	12mm	1/4	19	17	26.5	35
B12-03ML-PT	12mm	3/8	21	17	26.5	35
B12-04ML-PT	12mm	1/2	21	17	26.5	35



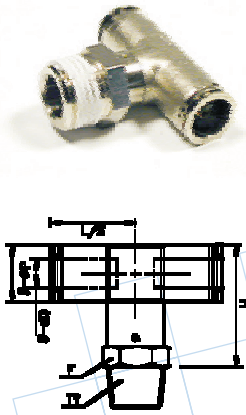
Resin

Part Number	ØD	T1 BSPT	F	ØP	L	H
R04-M5ML	4mm	M5x0.8	10	10	19	15
R04-01ML-PT	4mm	1/8	10	10	19	14
R04-02ML-PT	4mm	1/4	14	10	19	14
R06-M5ML	6mm	M5x0.8	10	12	19.5	15
R06-01ML-PT	6mm	1/8	10	12	21	14
R06-02ML-PT	6mm	1/4	14	14	22.5	17
R06-03ML-PT	6mm	3/8	17	14	22.5	21
R08-01ML-PT	8mm	1/8	14	14	21	17
R08-02ML-PT	8mm	1/4	14	14	21	17
R08-03ML-PT	8mm	3/8	17	14	22.5	21
R10-01ML-PT	10mm	1/8	17	16	24	21
R10-02ML-PT	10mm	1/4	17	16	24	21
R10-03ML-PT	10mm	3/8	17	16	24	21
R10-04ML-PT	10mm	1/2	21	19	26.5	26
R12-02ML-PT	12mm	1/4	19	19	26.5	26
R12-03ML-PT	12mm	3/8	19	19	26.5	26
R12-04ML-PT	12mm	1/2	21	19	26.5	26



Metric Male Tee – BSPT Thread

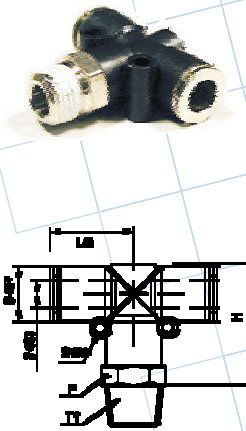
Brass



Part Number	ØD	T1 BSPT	F	ØP	L/2	H
B04-M5MT	4mm	M5x0.8	12	10	18	26
B04-01MT-PT	4mm	1/8	12	10	18	27
B04-02MT-PT	4mm	1/4	14	10	18	27
B06-M5MT	6mm	M5x0.8	12	10	18	26
B06-01MT-PT	6mm	1/8	12	10	18	27
B06-02MT-PT	6mm	1/4	14	10	18	27
B06-03MT-PT	6mm	3/8	17	10	18	30
B08-01MT-PT	8mm	1/8	14	12	19	30
B08-02MT-PT	8mm	1/4	14	12	19	30
B08-03MT-PT	8mm	3/8	17	12	19	30
B10-01MT-PT	10mm	1/8	17	14	21	32
B10-02MT-PT	10mm	1/4	17	14	21	32
B10-03MT-PT	10mm	3/8	17	14	21	32
B10-04MT-PT	10mm	1/2	21	14	21	32
B12-02MT-PT	12mm	1/4	19	17	26.5	35
B12-03MT-PT	12mm	3/8	21	17	26.5	35
B12-04MT-PT	12mm	1/2	21	17	26.5	35

Metric
Page 16

Resin

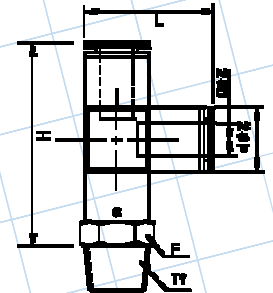
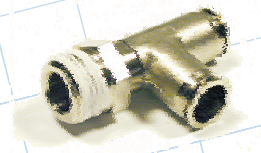


Part Number	ØD	T1 BSPT	F	ØP	L/2	H	Ød
R04-M5MT	4mm	M5x0.8	10	10	22.5	24.5	4.3
R04-01MT-PT	4mm	1/8	10	10	22.5	25.5	4.3
R04-02MT-PT	4mm	1/4	14	10	22.5	25.5	4.3
R06-M5MT	6mm	M5x0.8	12	12	25	26.5	4.3
R06-01MT-PT	6mm	1/8	12	12	25	27.5	4.3
R06-02MT-PT	6mm	1/4	14	12	25	27.5	4.3
R06-03MT-PT	6mm	3/8	17	12	25	27.5	4.3
R08-01MT-PT	8mm	1/8	14	14	27	30	4.3
R08-02MT-PT	8mm	1/4	14	14	27	30	4.3
R08-03MT-PT	8mm	3/8	17	14	27	30	4.3
R10-01MT-PT	10mm	1/8	17	16	31	34.5	4.3
R10-02MT-PT	10mm	1/4	17	16	31	34.5	4.3
R10-03MT-PT	10mm	3/5	17	16	31	34.5	4.3
R10-04MT-PT	10mm	1/2	21	16	31	34.5	4.3
R12-02MT-PT	12mm	1/4	19	21	35.5	38.5	4.3
R12-03MT-PT	12mm	3/8	21	21	35.5	38.5	4.3
R12-04MT-PT	12mm	1/2	21	21	35.5	38.5	4.3

Metric Male Run Tee – BSPT Thread

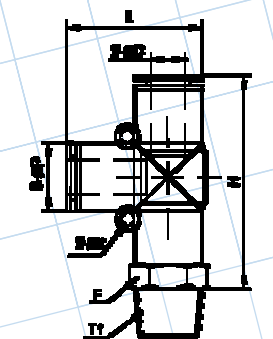
Brass

Part Number	ØD	T1 BSPT	F	ØP	L	H
B04-M5RT	4mm	M5x0.8	12	10	23	34
B04-01RT-PT	4mm	1/8	12	10	23	35
B04-02RT-PT	4mm	1/4	14	10	23	35
B06-M5RT	6mm	M5x0.8	12	10	23	34
B06-01RT-PT	6mm	1/8	12	10	23	35
B06-02RT-PT	6mm	1/4	14	10	23	35
B06-03RT-PT	6mm	3/8	17	10	23	35
B08-01RT-PT	8mm	1/8	14	12	25	39
B08-02RT-PT	8mm	1/4	14	12	25	39
B08-03RT-PT	8mm	3/8	17	12	25	39
B10-01RT-PT	10mm	1/8	17	14	28	44
B10-02RT-PT	10mm	1/4	17	14	28	44
B10-03RT-PT	10mm	3/8	17	14	28	44
B10-04RT-PT	10mm	1/2	21	14	28	44
B12-02RT-PT	12mm	1/4	19	17	35	53
B12-03RT-PT	12mm	3/8	21	17	35	53
B12-04RT-PT	12mm	1/2	21	17	35	53



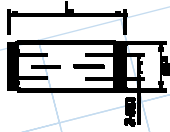
Resin

Part Number	ØD	T1 BSPT	F	ØP	L	H	Ød
R04-M5RT	4mm	M5x0.8	10	10	22.5	34	4.3
R04-01RT-PT	4mm	1/8	10	10	22.5	35	4.3
R04-02RT-PT	4mm	1/4	14	10	22.5	35	4.3
R06-M5RT	6mm	M5x0.8	12	12	25	38.5	4.3
R06-01RT-PT	6mm	1/8	12	12	25	39.5	4.3
R06-02RT-PT	6mm	1/4	14	12	25	39.5	4.3
R06-03RT-PT	6mm	3/8	17	12	25	39.5	4.3
R08-01RT-PT	8mm	1/8	14	14	27	42.5	4.3
R08-02RT-PT	8mm	1/4	14	14	27	42.5	4.3
R08-03RT-PT	8mm	3/8	14	14	27	42.5	4.3
R10-01RT-PT	10mm	1/8	17	16	31	47	4.3
R10-02RT-PT	10mm	1/4	17	16	31	47	4.3
R10-03RT-PT	10mm	3/8	17	16	31	47	4.3
R10-04RT-PT	10mm	1/2	21	16	31	47	4.3
R12-02RT-PT	12mm	1/4	19	21	35.5	55.5	4.3
R12-03RT-PT	12mm	3/8	21	21	35.5	55.5	4.3
R12-04RT-PT	12mm	1/2	21	21	35.5	55.5	4.3

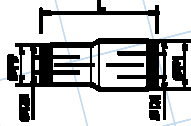


Metric Unions

Straight Union • Brass

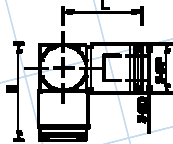
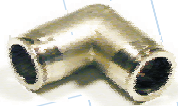


Part Number	ØD	ØP	L
B532U (4mm)	4mm	8	31.6
B06U	6mm	10	32.6
B516U (8mm)	8mm	12	32.6
B10U	10mm	14	36.6
B12MU	12mm	17	37.6



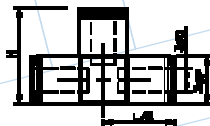
Different Union • Brass

Part Number	ØD1	ØD2	ØP1	ØP2	L
B06-04U	6mm	4mm	10	8	32.1
B08-06U	8mm	6mm	12	10	32.3
B10-08U	10mm	8mm	14	12	34.6
B12-10U	12mm	10mm	17	14	37.1



Union Elbow • Brass

Part Number	ØD	ØP	L/2	H
B532UL (4mm)	4mm	10	18	23
B06UL	6mm	10	18	23
B516UL (8mm)	8mm	12	19	25
B10UL	10mm	14	21	28
B12MUL	12mm	17	26.5	35



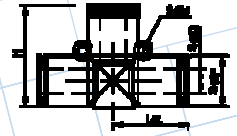
Union Tee • Brass

Part Number	ØD	ØP	L/2	H
B532UT (4mm)	4mm	10	21	26
B06UT	6mm	10	21	26
B516UT (8mm)	8mm	12	22	28
B10UT	10mm	14	23	30
B12MUT	12mm	17	26.5	35

Metric Unions

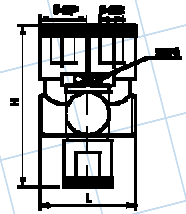
Union Tee • Resin

Part Number	ØD	ØP	L/2	H	Ød
R532UT (4mm)	4mm	10	17	22.5	4.3
R06UT	6mm	12	19.5	25	4.3
R516UT (8mm)	8mm	14	21	27	4.3
R10UT	10mm	16	27	31	4.3
R12MUT	12mm	21	37.5	35.5	4.3



Union Y • Resin

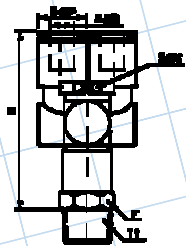
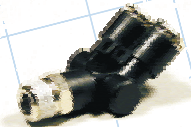
Part Number	ØD	ØP	L	H	Ød
R532UY (4mm)	4mm	10	25	45	3.3
R06UY	6mm	12	25	45	3.3
R516UY (8mm)	8mm	14	29	47.5	3.3
R10UY	10mm	16	34.5	55	4.3



Center axis allows independent movement of each tube connection.

Branch Y • Resin

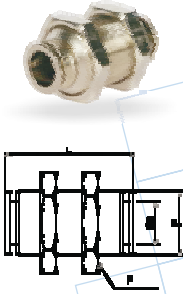
Part Number	ØD	T1 BSPT	F	ØP	L	H	Ød
R04-M5BY	4mm	M5x0.8	10	12	25	46	3.3
R04-01BY-PT	4mm	1/8	10	12	25	47	3.3
R04-02BY-PT	4mm	1/4	14	12	25	46	3.3
R06-M5BY	6mm	M5x0.8	12	12	25	46	3.3
R06-01BY-PT	6mm	1/8	12	12	25	47	3.3
R06-02BY-PT	6mm	1/4	14	12	25	47	3.3
R06-03BY-PT	6mm	3/8	17	12	25	47	3.3
R08-01BY-PT	8mm	1/8	14	14	29	49	3.3
R08-02BY-PT	8mm	1/4	14	14	29	49	3.3
R08-03BY-PT	8mm	3/8	17	14	29	49	3.3
R10-02BY-PT	10mm	1/4	17	16	33.5	59	4.3
R10-03BY-PT	10mm	3/8	17	16	33.5	59	4.3
R10-04BY-PT	10mm	1/2	21	16	33.5	59	4.3



Center axis allows independent movement of both tube connections.

Metric Bulkhead Union

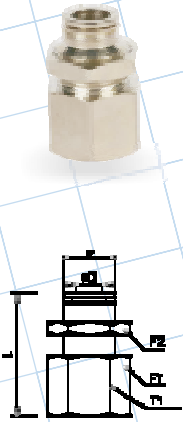
Brass



Part Number	ØD	P	F	L
B532BU (4MM)	4mm	12	14	31
B06BU	6mm	14	17	31
B516BU (8MM)	8mm	16	19	31
B10BU	10mm	20	24	37
B12MBU	12mm	22	27	44

Metric Female Bulkhead – BSPT Thread

Brass

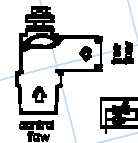
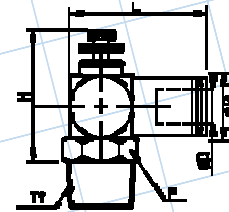


Part Number	ØD	T1 BSPT	F1	F2	P	L
B04-01FB-PT	4mm	1/8	14	14	12	28
B04-02FB-PT	4mm	1/4	17	14	12	30
B06-01FB-PT	6mm	1/8	17	17	14	31
B06-02FB-PT	6mm	1/4	17	17	14	31
B06-03FB-PT	6mm	3/8	21	17	14	32
B08-01FB-PT	8mm	1/8	17	17	14	31
B08-02FB-PT	8mm	1/4	17	17	14	31
B08-03FB-PT	8mm	3/8	21	21	16	32
B10-02FB-PT	10mm	1/4	21	24	20	34
B10-03FB-PT	10mm	3/8	21	24	20	34
B10-04FB-PT	10mm	1/2	25	24	20	34
B12-02FB-PT	12mm	1/4	25	27	22	37
B12-03FB-PT	12mm	3/8	25	27	22	37
B12-04FB-PT	12mm	1/2	25	27	22	37

Metric Flow Controllers – BSPT Thread

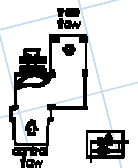
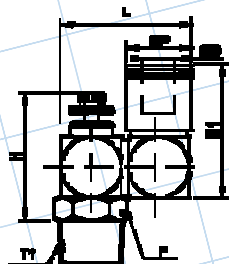
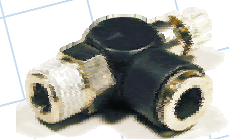
Male Elbow • Brass • Standard Flow • Meter Out

Part Number	ØD	T1 BSPT	F	ØP	L	H
BSC04M5-PT-0	4mm	M5x0.8	8	8	23	30
BSC04-01-PT-0	4mm	1/8	10	8	23	31
BSC04-02-PT-0	4mm	1/4	14	8	23	31
BSC06M5-PT-0	6mm	M5x0.8	8	10	23.5	30
BSC06-01-PT-0	6mm	1/8	12	10	26.5	34
BSC06-02-PT-0	6mm	1/4	14	10	26.5	34
BSC06-03-PT-0	6mm	3/8	17	10	30	34
BSC08-01-PT-0	8mm	1/8	14	12	31	38
BSC08-02-PT-0	8mm	1/4	14	12	31	38
BSC08-03-PT-0	8mm	3/8	17	12	31	38
BSC10-02-PT-0	10mm	1/4	19	14	37	46
BSC10-03-PT-0	10mm	3/8	19	14	37	46
BSC10-04-PT-0	10mm	1/2	21	14	37	46
BSC12-02-PT-0	12mm	1/4	19	17	37	46
BSC12-03-PT-0	12mm	3/8	19	17	37	46
BSC12-04-PT-0	12mm	1/2	21	17	37	46



Male Elbow • Resin • Standard Flow • Meter Out

Part Number	ØD	T1 BSPT	F	ØP	L	H
RSC04-01-PT-0	4mm	1/8	10	10	23	31
RSC04-02-PT-0	4mm	1/4	14	10	23	31
RSC06-01-PT-0	6mm	1/8	12	14	26.5	34
RSC06-02-PT-0	6mm	1/4	14	14	26.5	34
RSC08-01-PT-0	8mm	1/8	14	14	31	38
RSC08-02-PT-0	8mm	1/4	14	14	31	38
RSC08-03-PT-0	8mm	3/8	17	14	31	38
RSC10-02-PT-0	10mm	1/4	19	19	36	46
RSC10-03-PT-0	10mm	3/8	19	19	36	46
RSC10-04-PT-0	10mm	1/2	21	19	36	46
RSC12-02-PT-0	12mm	1/4	19	19	36	46
RSC12-03-PT-0	12mm	3/8	19	19	36	46
RSC12-04-PT-0	12mm	1/2	21	19	36	46



Male Elbow • Resin • Full Flow • Meter Out

Part Number	ØD	T1 BSPT	F	ØP	L	H
RSC06-01V-PT-0	6mm	1/8	14	14	31	38
RSC06-02V-PT-0	6mm	1/4	14	14	31	38
RSC08-01V-PT-0	8mm	1/8	19	19	36	46
RSC08-02V-PT-0	8mm	1/4	19	19	36	46
RSC08-03V-PT-0	8mm	3/8	19	19	36	46

Metric Flow Controllers – BSPT Thread

Dual Axis • Brass & Resin • Standard Flow • Meter Out

Part Number	ØD	T1 BSPT	F	ØP	L	H	H1
SCDA0401-PT-O	4mm	1/8	10	10	23	31	23
SCDA0402-PT-O	4mm	1/4	14	10	23	31	23
SCDA0601-PT-O	6mm	1/8	14	14	26.5	34	26.5
SCDA0602-PT-O	6mm	1/4	17	14	26.5	34	26.5
SCDA0801-PT-O	8mm	1/8	14	14	31	38	31
SCDA0802-PT-O	8mm	1/4	14	14	31	38	31
SCDA0803-PT-O	8mm	3/8	17	14	31	38	31
SCDA1002-PT-O	10mm	1/4	19	19	36	46	36
SCDA1003-PT-O	10mm	3/8	19	19	36	46	36
SCDA1004-PT-O	10mm	1/2	21	19	36	46	36
SCDA1202-PT-O	12mm	1/4	19	19	36	46	36
SCDA1203-PT-O	12mm	3/8	19	19	36	46	36
SCDA1204-PT-O	12mm	1/2	21	19	36	46	36

Dual Axis • Brass & Resin • Full Flow • Meter Out

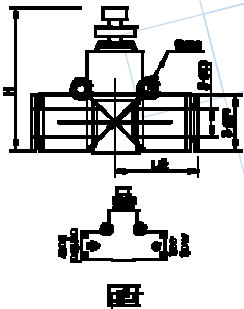
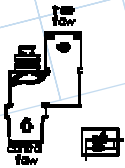
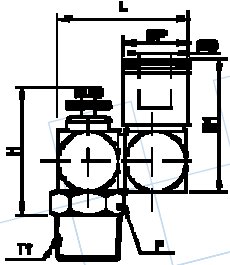
Part Number	ØD	T1 BSPT	F	ØP	L	H	H1
SCDA06-01V-PT-O	6mm	1/8	14	14	31	38	31
SCDA06-02V-PT-O	6mm	1/4	14	14	31	38	31
SCDA08-01V-PT-O	8mm	1/8	19	19	36	46	36
SCDA08-02V-PT-O	8mm	1/4	19	19	36	46	36
SCDA08-03V-PT-O	8mm	3/8	19	19	36	46	36

In-Line • Resin • Standard Flow

Part Number	ØD	ØP	L/2	H	Ød
SCU532 (4mm)	4mm	12	19.5	34.7	4.3
SCU06	6mm	14	21	38.1	4.3
SCU516 (8mm)	8mm	16	27	46.5	4.3
SCU10	10mm	21	37.5	48.8	4.3
SCU12M	12mm	21	37.5	48.8	4.3

In-Line • Resin • Full Flow

Part Number	ØD	ØP	L/2	H	Ød
SCU532V (4mm)	5/32	14	21	38.1	4.3
SCU14V	1/4	16	27	46.5	4.3
SCU516V (8mm)	5/16	21	37.5	48.8	4.3
SCU38V	3/8	21	37.5	48.8	4.3





MANUFACTURERS OF PRECISION-MADE
POLYURETHANE SPIRAL HOSE & TUBING



We at ATP believe we have developed the latest technology in tubing, hoses and pneumatic accessories. In keeping with current market demands, our products offer ergonomics and safety to help support assembly and automation applications.



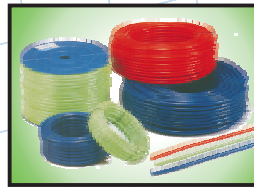
Weld Tubing
Polyurethane tubing covered with a flame-resistant layer. Meets UL94V0 rating. Designed for robotic welding and other severe-service applications. Can be bonded & spiraled.



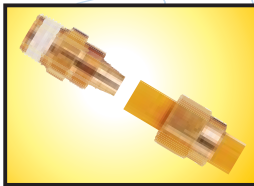
Polyurethane Spiral Hoses
Standard, Stock and our industry exclusives—the "Strong" and "Strong-Plus." A tighter coil ID gives our Strong hoses better memory retention. The "Plus" is a lightweight, ergonomic, hose whip providing surface protection and operator comfort. Custom models are our specialty.



Technibond[®]
Thermally-bonded, polyurethane tube groupings available in straight and spiral configurations. Wire can be added to carry electric. Custom configurations welcome with no minimum quantities. See our web page for a quote-request form.



Polyurethane Braided Hose
Lightweight and flexible and much more abrasion-resistant than traditional air hoses. A must-have for contractors, and anyone who owns a compressor. Available in several durometers. Reinforced with nylon for greater working pressures. Standard & custom assemblies and spirals.



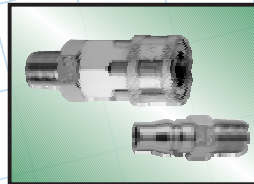
Hose Fittings
Two-piece, reusable, compression-style brass fittings in fractional and metric, male and female, rigid and swivel with and without bend restrictors.



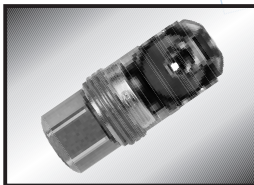
Hose & Cable Balancers
Durable cases and high-quality internals make up our balancers. Ideal for workstation ergonomics.



The **Improved Free Angle[®] Swivel Fitting**
The rubber boot has been replaced by a steel cover giving it a much longer service life. Our two rotation points make this superior to the imitators. The ergonomic, patented 360° circular rotation and 45° angled rotation makes this fitting indispensable for air tool and assembly applications.



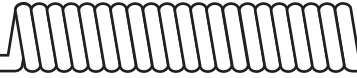
Quick Couplers
Available in low and high pressure, non-marring plastic, steel, brass and stainless for pneumatic and hydraulic applications. Locking and safety vent styles.



Oetiker Swing Couplings
ATP proudly carries and recommends Oetiker Swing Couplings for use with our Free Angle Swivel Fittings. The ultimate pairing where safety and ergonomics are concerned.



TechniGripp[®]
The world's first hydraulic push-to-connect fitting. Does not require use of a crimper. Allows on-site fabrication of hoses to eliminate costly down time.



**MANUFACTURERS OF PRECISION-MADE
POLYURETHANE SPIRAL HOSE & TUBING**



**ADVANCED
TECHNOLOGY
PRODUCTS**

**PO Box 335
12740 State Route 4
Milford Center, Ohio 43045-0335 USA
Phone: 937.349.4055
Fax: 937.349.4155
E-mail: info@atp4pneumatics.com
www.atp4pneumatics.com**

**ATP reserves the right to change
product specifications without notice.**

**© Copyright Effective March 2006
Advanced Technology Products,
All Rights Reserved.**