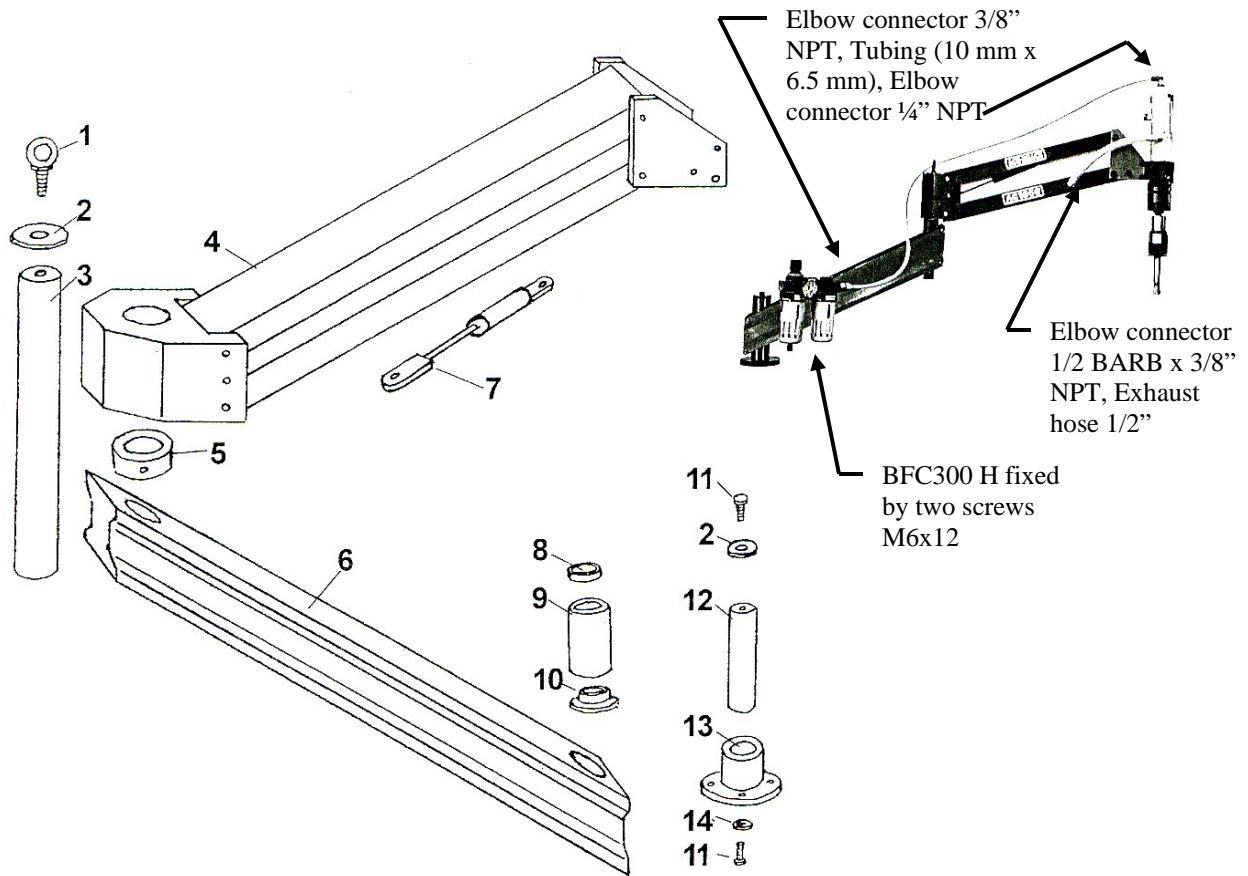




AC1050HD ACU-REACH ARTICULATING BALANCING ARM

Wespro Pneumatic Tools



<u>No.</u>	<u>Description</u>	<u>Order Code</u>	<u>Qty</u>	<u>No.</u>	<u>Description</u>	<u>Order Code</u>	<u>Qty</u>
1	Air Hose Guide	140024	1	8	Teflon Bushing	137775	1
2	Washer	137773	2	9	Bushing	137772	1
3	Joining Post	138174	1	10	Teflon Bushing	147832	1
4	Tool Arm Assembly (Part #7 included)	138173	1	11	Socket Head Cap Screw	137777	2
5	Support Collar c/w Set Screw	140022	1	12	Mounting Post	137779	1
6	Jib Arm	140017	1	13	Mounting Base	137780	1
7	Gas Cylinder (800NM)	137771	1	14	Washer	129376	1

Assembly Instruction:

1. Install the Bushing (#9) into the lower bore of the Jib Arm (#6) and tighten the clamp screw on the arm.
2. Insert the Joining Post (#3) into the upper bore of the Jib Arm and tighten the Set Screw inside the Support Collar (#5) to fix the Joining Post on the arm.
3. Adjust two set screws in the Tool Arm (#4) to fix and center the Gas Cylinder (#7).
4. Remove the Cap Screw (#11) & Washer (#2) from the Mounting Post (#12) first. Insert the Mounting Post (#12) and Base (#13) Assembly into the bore of the Bushing (#9). Re-assemble the Washer & Cap Screw back to the Mounting Post.
5. Install the Tool Arm (#4) onto the Joining Post (#3).

Parts list Of Air Exhaust Kits (AEK) For ACU-REACH AC1050HD Balancing Arms

Tool Model	Part No.	Description	Qty	C#
AC1050HD-AEK	RKL-10-03	ELBOW CONNECTOR 10mm TUBE 3/8 NPT	1	72908
C#165926 (For PT90250)	RKL-10-02	ELBOW CONNECTOR 10mm TUBE x 1/4 NPT 90°	1	66882
	ATP-10M-BK	TUBING (10mmx6.5mm) 46"	1	112457
	WPS-500B	EXHAUST HOSE 1/2" X 8"	1	66674
	139-8C	ELBOW CONNECTOR 1/2 BARB x 3/8 NPT	2	159435
FRL UNIT	BFC300H	FILTER, REGULATOR, LUBRICAOTR 3/8" NPT	1	105812

*** Dynamic air pressure is 90 p.s.i. for the normal operation.**