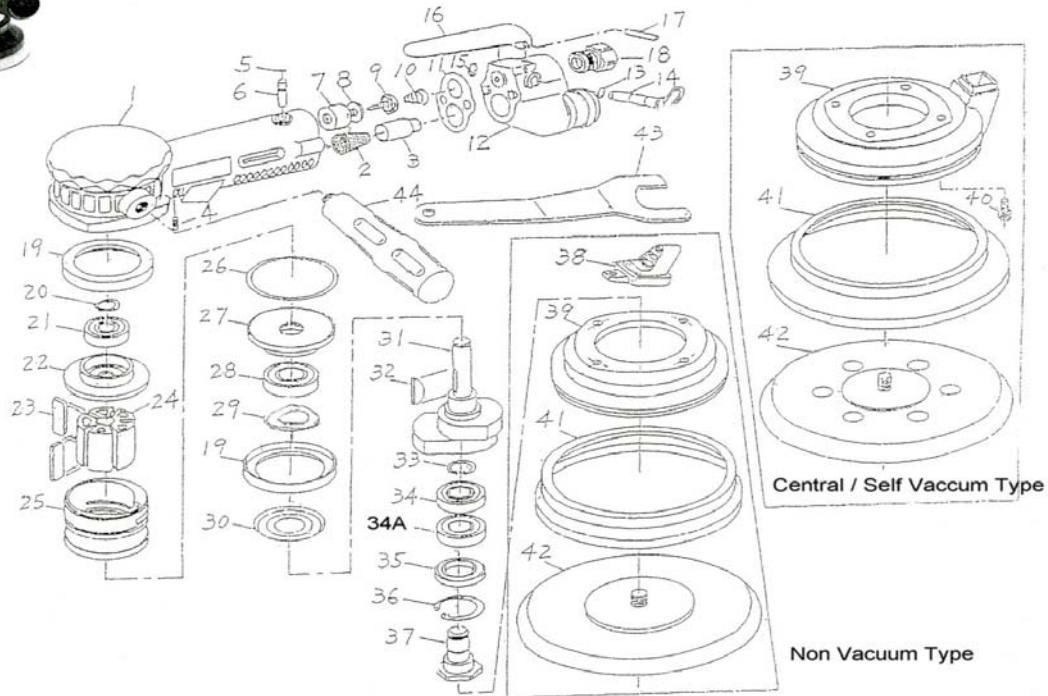




SO6P2H SERIES

6" 2-HANDED ORBITAL SANDER

Wespro Pneumatic Tools



No.	Description	Order Code	Qty	No.	Description	Order Code	Qty
1	Housing	194305	1	24	Rotor	181040	1
2	Muffler Cone	181017	1	25	Cylinder	WP 2HS-25	1
3	Muffler Body	181020	1	26	O-Ring	159053	1
4	Screw (For NV type)	181023	1	27	Front End Plate	175724	1
	Screw (For CV & SV)	181026	1	28	Ball Bearing	112034	1
5	O-Ring	159045	1	29	Washer	175725	1
6	Valve Stem	194938	1	30	Washer	175736	1
7	Bushing	WP 2HS-07	1	31	Motor Shaft Balancer	WP 2HS-31	1
8	Washer	159047	1	32	Key	175727	1
9	Valve	181031	1	33	Snap Ring	175729	1
10	Spring	159049	1	34	Ball Bearing (6001)	112029	1
11	Packing	178311	1	34A	Ball Bearing (6001DU)	WP 6001DU	1
12	Housing Back Seat	194307	1	35	Shaft Seal	WP 2HS-35	1
13	O-Ring	181034	2	36	Snap Ring	175731	1
14	Regulator	181037	1	37	Shaft	175732	1
15	Snap Ring	181038	1	38	Exhaust Sleeve (For NV)	181041	1
16	Lever	194308	1	39	Housing Cover (For NV)	172232	1
17	Pin	194309	1		Housing Cover (For CV & SV)	180335	1
18	Air Inlet	175709	1	40	Screw	175733	4
19	Rubber Bushing	159050	2	41	Shroud (For NV)	175734	1
20	Snap Ring	175719	1		Shroud (For CV & SV)	181042	1
21	Ball Bearing	112028	1	42	Backing Pad	See Wespro cat.	1
22	Rear End Plate	175721	1	43	Spanner	175736	1
23	Rotor Plate	181039	5	44	Handle	WP 2HS-44	1