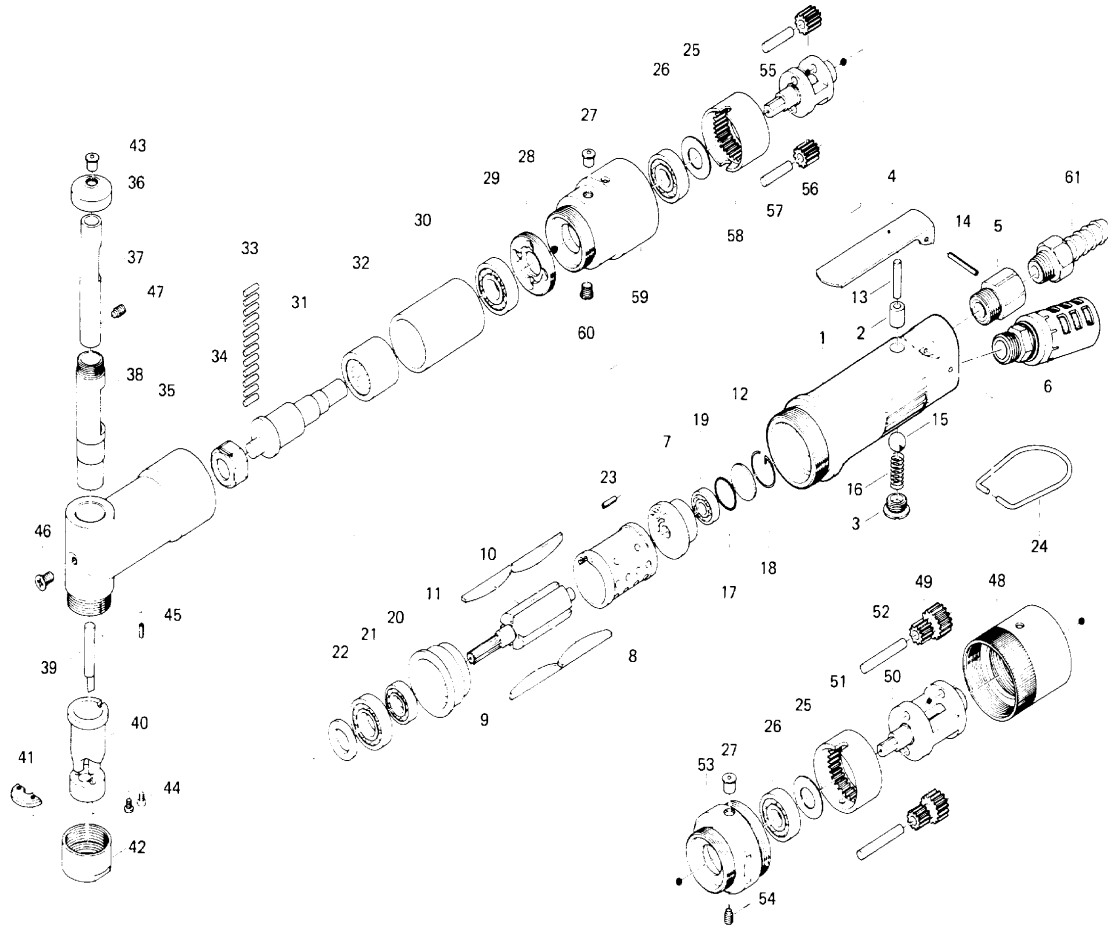


UNB-60S Series AIR NIBBLERS

EXPLODED VIEW



PARTS LIST

Index No.	Code No.	Parts Name	Quantity	Index No.	Code No.	Parts Name	Quantity	Index No.	Code No.	Parts Name	Quantity
UNB-60S Series AIR NIBBLERS				# 28	878-161-1	Ball Bearing Support	1	PARTS FOR UNB-60S-15			
# 1	617-025-7	Casing	1	# 29	982-101-0	Ball Bearing (6001)	1	# 48	612-035-3	Casing Connector	1
# 2	553-103-1	Valve Rod Bushing	1	# 30	878-152-1	Cam Shaft Bushing	1	# 49	612-470-3	Planet Gear	2
# 3	201-108-1	Valve Plug	1	# 31	878-151-1	Cam Shaft	1	# 50	477-480-0	Gear Cage	1
# 4	500-107-1	Valve Lever	1	# 32	988-023-0	Needle Roller Bearing (NK 18/20)	1	# 51	612-465-7	Internal Gear	1
# 5	612-091-0	Air Inlet Bushing	1	# 33	972-090-0	Needle Roller (3x10)	12	# 52	972-174-0	Needle Roller (5x32)	2
# 6	018-885-7	Silencer	1	# 34	878-153-1	Eccentric Casing	1	# 53	477-029-0	Gear Casing	1
# 7	600-285-2	Rear Plate	1	# 35	878-150-1	Cutter Casing	1	# 54	952-205-0	Allen Head Dog Point Screw (M5x5)	1
# 8	600-286-1	Cylinder	1	# 36	878-155-2	Oil Plug	1	PARTS FOR UNB-60S-29			
# 9	612-287-0	Rotor	1	# 37	878-156-1	Main Shaft	1	# 55	478-480-0	Gear Cage	1
# 10	600-288-1	Blade	4	# 38	878-157-1	Main Shaft Bushing	1	# 56	612-470-5	Planet Gear	2
# 11	612-289-0	Front Plate	1	# 39	878-158-1	Cutter	1	# 57	972-164-0	Needle Roller (5x20)	2
# 12	600-291-1	Rear Plate Spacer	1	# 40	878-154-2	Guide Stack	1	# 58	612-465-8	Internal Gear	1
# 13	970-321-0	Pin (H) (4x21)	1	# 41	878-159-1	Cutter Edge	1	# 59	478-029-0	Gear Casing	1
# 14	973-124-0	Roll Pin (3x24)	1	# 42	878-160-1	Cutter Casing Cover	1	# 60	312-757-1	Internal Gear Set Screw	1
# 15	981-030-0	Ball (3/8)	1	# 43	966-022-0	Oil Plug (1/8-S)	1	Standard Accessories			
# 16	977-154-0	Cone Spring (7x7.5x17)	1	# 44	948-426-0	Allen Flush Head Screw (M3x12)	2	# 61	940-114-0	Air Hose Nipple (NPT1/4x3/8)	1
# 17	990-914-0	O-Ring (SNS16)	1	# 45	973-006-0	Roll Pin (2x6)	1	# 62	937-065-0	Spanner (4.8x22x153)	1
# 18	978-231-0	Snap Ring (23x1.2)	1	# 46	949-110-0	Over Flush Head Screw (M4x8)	1				
# 19	982-401-0	Ball Bearing (EE-2)	1	# 47	952-205-0	Allen Head Dog Point Screw (M5x5)	1				
# 20	982-402-0	Ball Bearing (EE-3)	1								
# 21	982-403-0	Ball Bearing (EE-4)	1								
# 22	975-138-0	Spacer (22x13.7x2)	1								
# 23	973-006-0	Roll Pin (2x6)	1								
# 24	010-790-1	Suspension Ring	1								
# 25	975-162-0	Spacer (24x12.5x0.4)	1								
# 26	982-100-0	Ball Bearing (6000)	1								
# 27	968-130-0	Grease Cup (3/16)	1								

When ordering spare parts, please specify tool type, code number and part name.

URYU SEISAKU, LTD. Osaka, Japan

Printed in Japan

OKA-119-84-06-04-3003