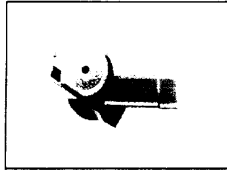


UC-60S-15-29 AIR SAW

EXPLODED VIEW

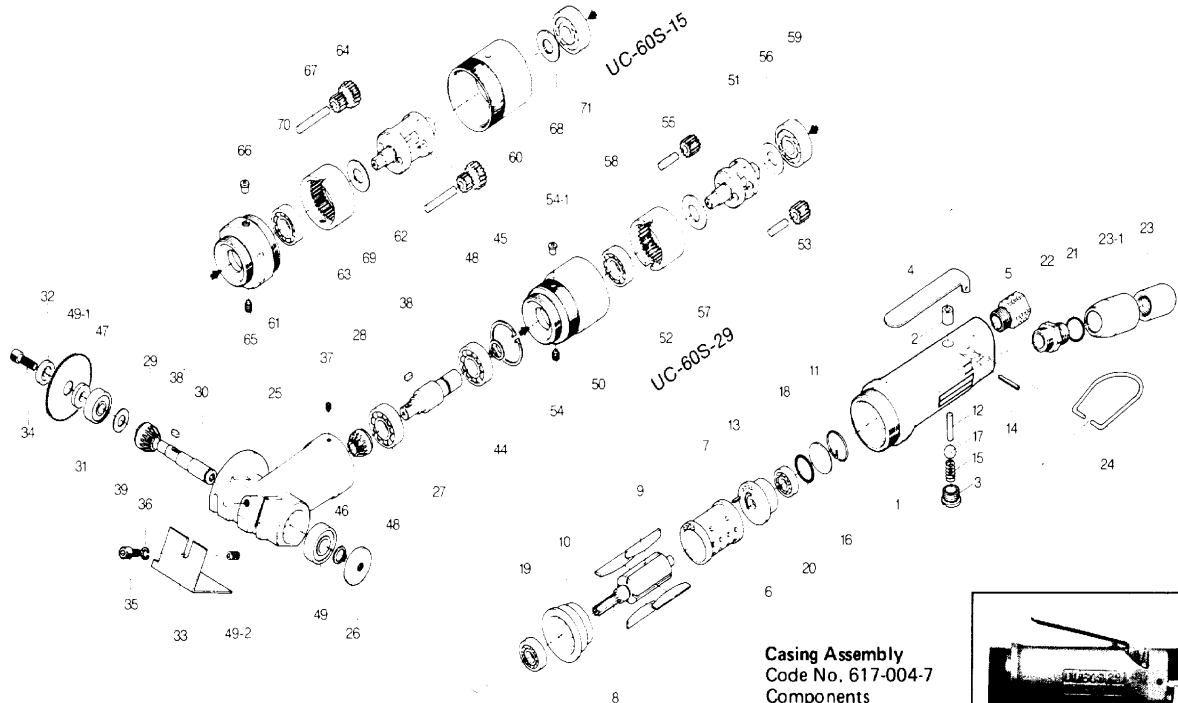


Bevel Gear Casing Assembly

Code No. 831-023-5

Components

(#25,26,27,28,29,30,31,32,33,
34,35,36,37,38,39,44,45,46,47,
48,49,49-1,49-2)

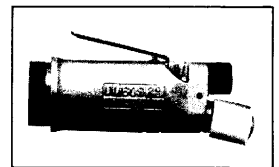


Casing Assembly

Code No. 617-004-7

Components

(#1,2,3,4,5,12,14,15,
17,21,22,23,23-1)



PARTS LIST

Casing assembly components are marked with "o".

Bevel gear casing assembly components are marked with "x".

Index No.	Code No.	Part Name	Quantity	Index No.	Code No.	Part Name	Quantity	Index No.	Code No.	Part Name	Quantity
UC-60S SERIES COMMON PARTS											
# 1	617-025-7	o Casing	1	#32	831-398-6	x Saw Blade Bolt Flange	1	#55	972-164-0	Needle Roller (5x20)	2
# 2	553-103-1	o Valve Rod Bushing	1	#33	831-755-5	x Guide Plate	1	#56	975-138-0	Spacer (22x13.7x2)	1
# 3	201-108-1	o Valve Plug	1	#34	945-112-0	x Allen Head Bolt (M5x12)	1	#57	975-162-0	Spacer (24x12.5x0.4)	1
# 4	500-107-1	o Valve Lever	1	#35	945-208-0	x Allen Head Bolt (M6x8)	1	#58	982-100-0	Ball Bearing (6000)	1
# 5	612-091-0	o Air Inlet Bushing	1	#36	962-009-0	x Spring Washer (2-6S)	1	#59	982-403-0	Ball Bearing (EE-4)	1
# 6	600-285-2	Rear Plate	1	#37	954-105-0	x Allen Head Cone Point Screw (M4x5)	1	477-005-0 UC-60S-15 GEAR BOX ASSEMBLY			
# 7	600-286-1	Cylinder	1	#38	970-204-0	x Pin (3x6)	2	#60	612-035-3	Casing Connector	1
# 8	612-287-0	Rotor	1	#39	831-433-5	x Driven Gear Spacer	1	#61	477-029-0	Gear Casing	1
# 9	600-288-1	Blade	4	#40	975-740-0	Adjusting Spacer (12x8.1xT)	1	#62	477-480-0	Gear Cage	1
#10	612-289-0	Front Plate	1	#41	975-752-0	Adjusting Spacer (15x10xT)	1	#63	612-465-7	Internal Gear	1
#11	600-291-1	Rear Plate Spacer	1	#42	975-756-0	Adjusting Spacer (18x12xT)	1	#64	612-470-3	Planet Gear	2
#12	970-321-0	o Pin (H) (4x21)	1	#43	975-796-0	Adjusting Spacer (28x20xT)	1	#65	952-206-0	Allen Head Dog Point Screw (M5x6)	1
#13	973-006-0	Roll Pin (2x6)	1	#44	979-107-0	x Outer Snap Ring (10)	1	#66	968-130-0	Grease Cup (3/16)	1
#14	973-122-0	o Roll Pin (3x22)	1	#45	979-109-0	x Outer Snap Ring (12)	1	#67	972-174-0	Needle Roller (5x32)	2
#15	977-154-0	o Cone Spring (7x7.5x17)	1	#46	979-021-0	x Inner Snap Ring (28)	1	#68	975-138-0	Spacer (22x13.7x2)	1
#16	978-231-0	Snap Ring (23x1.2)	1	#47	982-070-0	x Ball Bearing (608LL)	1	#69	975-162-0	Spacer (24x12.5x0.4)	1
#17	981-030-0	Ball (3/8)	1	#48	982-141-0	x Ball Bearing (6001Z)	2	#70	982-100-0	Ball Bearing (6000)	1
#18	982-401-0	Ball Bearing (EE-2)	1	#49	982-140-0	x Ball Bearing (6000Z)	1	#71	982-403-0	Ball Bearing (EE-4)	1
#19	982-402-0	Ball Bearing (EE-3)	1	#49-1	881-070-0	x Saw Blade (TOOTH-82)	1	Standard Accessories			
#20	990-914-0	O-Ring (SNS-16)	1	#49-2	965-020-0	x Heli-Sert (M6x1D)	1	=72	940-114-0	Air Hose Nipple (NPT1/4x3/8)	1
#21	990-912-0	o O-Ring (SNS-14)	1	478-005-0 UC-60S-29 GEAR BOX ASSEMBLY				=73	937-065-0	Spanner (48x22x153)	1
#22	612-781-1	o Exhaust Stack Bushing	1	#50	478-029-0	Gear Casing	1	=74	939-200-0	Allen Wrench (4mm) (UNBRACO)	2
#23	606-780-1	o Exhaust Stack	1	#51	478-480-0	Gear Cage	1	=75	939-104-0	Allen Wrench (5mm)	1
#23-1	612-778-0	o Nylon Protector	1	#52	612-465-8	Internal Gear	1	Optional Accessories			
#24	010-790-1	Suspension Bail	1	#53	612-470-5	Planet Gear	2	=77	932-110-0	Air Regulator (U-1/4")	1
#25	831-032-5	x Bevel Gear Casing	1	#54	312-757-1	Internal Gear Set Screw	1	=78	881-071-1	Saw Blade (TOOTH-24)	1
#26	831-072-5	x Bevel Gear Casing Cover	1	#54-1	968-130-0	Grease Cup (3/16)	1	=79	881-072-1	Saw Blade (TOOTH-40)	1
#27	831-500-6	x Middle Shaft	1					=80	881-073-1	Saw Blade (TOOTH-60)	1
#28	831-420-6	x Driving Gear	1								
#29	831-430-6	x Driven Gear	1								
#30	831-438-6	x Driven Gear Shaft	1								
#31	831-397-6	x Saw Blade Holder Flange	1								

When ordering spare parts, please specify tool type, code number and part name.

Printed in Japan

URYU SEISAKU, LTD. Osaka, Japan

OKA 089-80-6-20-3003