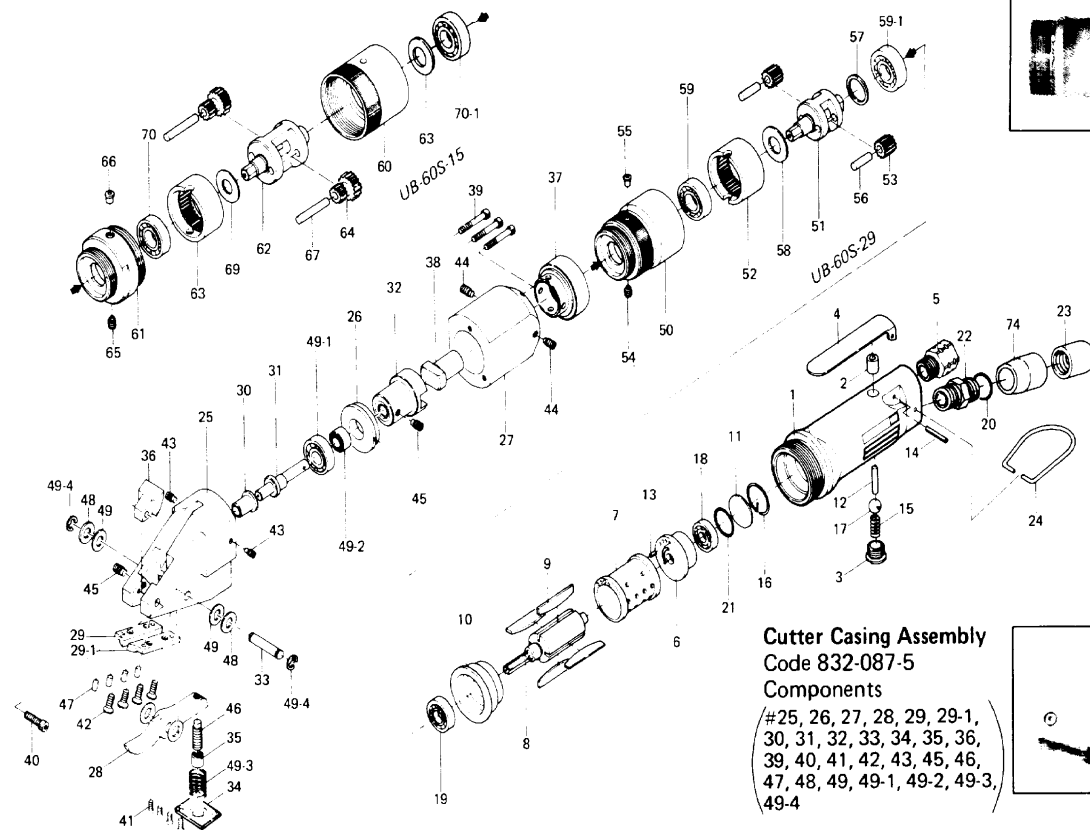


# UB-60S-15-29 AIR SHARE

## EXPLODED VIEW



**Cutter Casing Assembly**  
Code 832-087-5

Components

(#25, 26, 27, 28, 29, 29-1, 30, 31, 32, 33, 34, 35, 36, 39, 40, 41, 42, 43, 45, 46, 47, 48, 49, 49-1, 49-2, 49-3, 49-4)

Cutter Casing Assembly components are marked with "x".  
Casing assembly components are marked with "o".

## PARTS LIST

Index No.	Code No.	Part Name	Quantity	Index No.	Code No.	Part Name	Quantity	Index No.	Code No.	Part Name	Quantity				
<b>UB-60S COMMON PARTS</b>															
# 1	617-025-7	o Casing	1	#32	832-079-5	x Shaft Coupling	1	#52	612-465-8	Internal Gear	1				
# 2	553-103-1	o Valve Rod Bushing	1	#33	832-709-5	x Pin	1	#53	612-470-5	Planet Gear	2				
# 3	201-108-1	o Valve Plug	1	#34	832-164-5	x Spring Retainer	1	#54	952-206-0	Allen Head Dog Point Screw (M5x6)	1				
# 4	500-107-1	o Valve Lever	1	#35	832-269-5	x Adjusting Nut	1	#55	968-130-0	Grease Cup (3/16)	1				
# 5	612-091-0	o Air Inlet Bushing	1	#36	832-755-5	x Chip Guide Plate	1	#56	972-164-0	Needle Roller (5x20)	2				
# 6	600-285-2	Rear Plate	1	#37	832-037-5	Gear Casing Connector	1	#57	975-138-0	Spacer (22x13.7x2)	1				
# 7	600-286-1	Cylinder	1	#38	832-452-5	Transmission Shaft	1	#58	975-162-0	Spacer (24x12.5x0.4)	1				
# 8	612-287-1	Rotor	1	#39	945-002-0	x Allen Head Bolt (M3x30)	3	#59	982-100-0	Ball Bearing (6000)	1				
# 9	600-288-1	Blade	4	#40	945-022-0	x Allen Head Bolt (M4x22)	1	#59-1	982-403-0	Ball Bearing (EE-4)	1				
#10	612-289-1	Front Plate	1	#41	948-420-0	x Flat Head Screw (M3x8)	4	<b>477-005-0 UB-60S-15 GEAR BOX ASSEMBLY</b>							
#11	600-291-1	Rear Plate Spacer	1	#42	949-110-0	x Oval Flush Head Screw (M4x8)	4	#60	612-035-3	Casing Connector	1				
#12	970-321-0	o Pin (H) (4x21)	1	#43	952-106-0	x Allen Head Dog Point Screw (M4x6)	2	#61	477-029-0	Gear Casing	1				
#13	973-006-0	o Roll Pin (2x6)	1	#				#62	477-380-0	Gear Cage	1				
#14	973-122-0	Roll Pin (3x22)	1	#44	952-208-0	Allen Head Dog Point Screw (M5x8)	2	#63	612-465-7	Internal Gear	1				
#15	977-154-0	o Cone Spring (7x7.5x17)	1	#45	952-210-0	x Allen Head Dog Point Screw (M5x10)	2	#64	612-470-3	Planet Gear	2				
#16	978-231-0	Snap Ring (23x1.2)	1	#46	952-318-0	x Allen Head Dog Point Screw (M6x18)	1	#65	952-206-0	Allen Head Dog Point Screw (M5x6)	1				
#17	981-030-0	o Ball (3/8)	1	#47	970-205-0	x Pin(H) (3x7)	4	#66	968-130-0	Grease Cup (3/16)	1				
#18	982-401-0	Ball Bearing (EE-2)	1	#48	975-055-0	x Spacer (14x6x1.7)	2	#67	972-174-0	Needle Roller (5x32)	2				
#19	982-402-0	Ball Bearing (EE-3)	1	#49	975-748-0	x Adjusting Spacer (14x6.5xT)	2	#68	975-138-0	Spacer (22x13.7x2)	1				
#20	990-912-0	O-Ring (SNS-14)	1	#				#69	975-162-0	Spacer (24x12.5x0.4)	1				
#21	990-914-0	O-Ring (SNS-16)	1	#49-1	982-024-0	x Ball Bearing (629)	1	#70	982-100-0	Ball Bearing (6000)	1				
#22	612-781-1	o Exhaust Stack Bushing	1	#49-2	988-470-0	x Needle Roller Bearing (NK10710)	1	#70-1	982-403-0	Ball Bearing (EE-4)	1				
#23	606-780-1	Exhaust Stack	1	#49-3	976-303-0	x Spring (12x30)	1	<b>Standard Accessories</b>							
#24	010-790-1	Suspension Bail	1	#49-4	979-410-0	x Outer Snap Ring (E5)	2	=71	940-114-0	Air Hose Nipple (NPT 1.4x3/8)	1				
#25	832-712-5	x Cutter Head	1	<b>478-005-0 UB-60S-29 GEAR BOX ASSEMBLY</b>				=72	937-065-0	Spanner (48x22x153)	1				
#26	832-345-5	x Cam Shaft Holder	1	#50	478-029-0	Gear Casing	1	<b>Optional Accessories</b>							
#27	832-713-5	x Cutter Casing	1	#51	478-480-0	Gear Cage	1	=73	932-110-0	Air Regulator (U-1.4")	1				
#28	832-710-5	x Center Blade	1									=74	612-778-0	Nylon Protector	1
#29	832-716-5	x Right Blade	1												
#29-1	832-717-5	x Left Blade	1												
#30	832-567-5	x Cam Shaft Bushing	1												
#31	832-374-5	x Cam Shaft	1												

When ordering spare parts, please specify tool type, code number and part name.

Printed in Japan

**URYU SEISAKU, LTD.** OSAKA, JAPAN

OKA-092-76-7-15-5001