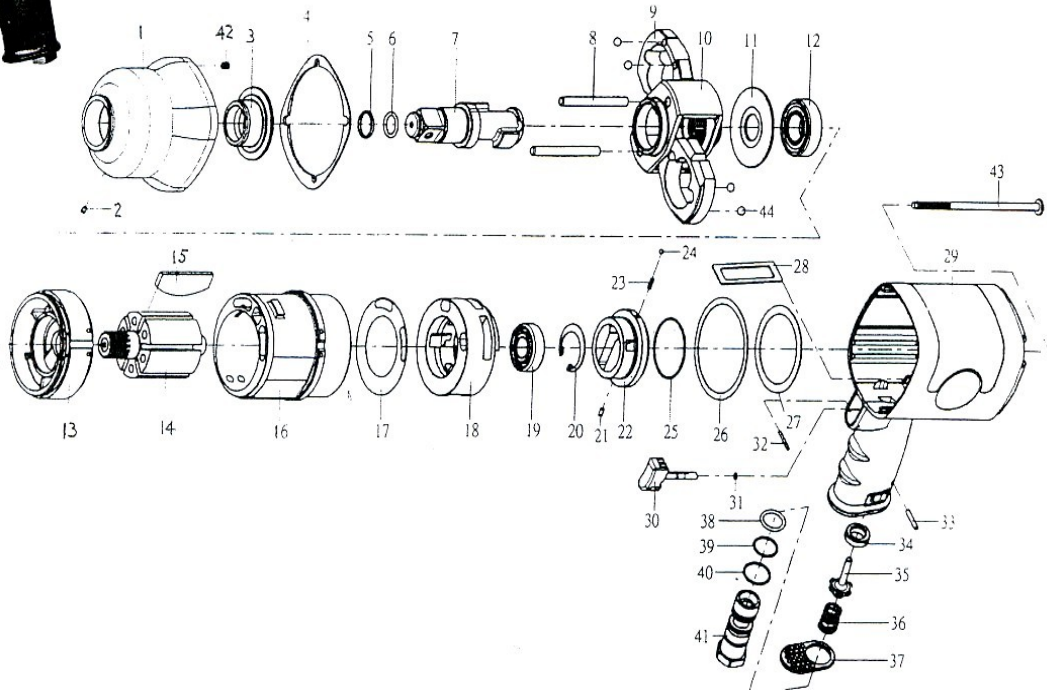




W750COM & W750-6COM 3/4" COMPOSITE IMPACT

Wespro Pneumatic Tools



<u>No.</u>	<u>Description</u>	<u>Order Code</u>	<u>Qty</u>	<u>No.</u>	<u>Description</u>	<u>Order Code</u>	<u>Qty</u>
1	Hammer Case	WP 278F-002	1	23	Spring	WP 305F-034	1
2	Grease Fitting	WP 00-4603	1	24	Steel Ball	WP 00-3805	1
3	Anvil Bushing	WP 278F-010	1	25	O-Ring	WP 00-4179	1
4	Front Gasket	WP 278F-020	1	26	Rear Gasket	WP 278F-030	1
5	Anvil Collar	WP 280-028	1	27	Washer	WP 278F-031	1
6	O-Ring	WP 00-4175	1	28	Air Channel Gasket	WP 278F-019	1
7	Anvil Standard Anvil 6" Extended	WP 278F-011A6	1	29	Motor Housing	WP 278F-001	1
8	Hammer Pin	WP 285C-016	2	30	Trigger	WP 305F-024-B	1
9	Hammer	WP 278F-017	2	31	O-Ring	WP 00-4101	1
10	Hammer Cage	WP 278F-012	1	32	Spring Pin	WP 00-3326	1
11	Rear Washer	WP 278-019-B	1	33	Spring Pin	WP 00-3308	1
12	Ball Bearing	WP 00-2325	1	34	Bushing	WP 306-027-B	1
13	Front End Plate	WP 278F-005	1	35	Valve Stem	WP 306-026	1
14	Rotor	WP 278F-007	1	36	Spring	WP 305F-026	1
15	Rotor Blade	WP 277-008	6	37	Exhaust Deflector	WP 278F-034	1
16	Cylinder	WP 278F-006	1	38	O-Ring	WP 00-4126	1
17	Valve Sleeve Gasket	WP 278F-033	1	39	O-Ring	WP 00-4143	1
18	Valve Sleeve	WP 278F-029	1	40	O-Ring	WP 00-4127	1
19	Ball Bearing	WP 00-2304	1	41	Air Inlet 3/8" NPT	WP 278F-025C	1
20	Snap Ring	WP 00-3111	1	42	Insert Recoil	WP 00-4306	4
21	Spring Pin	WP 00-3345	1	43	Screw	WP 278F-028	4
22	Reverse Valve	WP 278F-021	1	44	Steel Ball	WP 00-3821	4