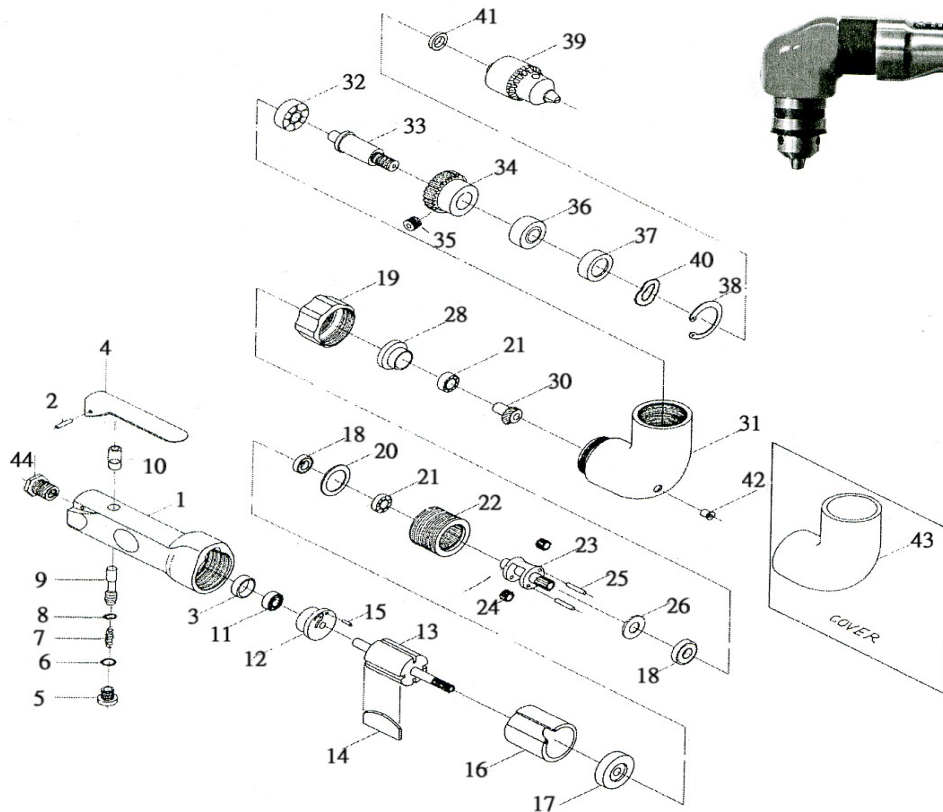




D319A, D319A-XT & D319A-10014

3/8" ANGLE DRILL

Wespro Pneumatic Tools



<u>No.</u>	<u>Description</u>	<u>Order Code</u>	<u>Qty</u>	<u>No.</u>	<u>Description</u>	<u>Order Code</u>	<u>Qty</u>
1	Motor Housing	180255	1	23	Planet Cage	WP 116323-1GR0	1
2	Pin	133836	1	24	Planet Gear	WP 116324-1TT0	2
3	Bearing Cap	166647	1	25	Pin	166659	2
4	Throttle Lever	166644	1	26	Washer	166663	1
5	Plug	166690	1	28	Bearing Cap	WP 116328-1JB0	1
6	O-Ring	133839	1	30	Pinion	148233	1
7	Spring	166688	1	31	Angle Housing	194675	1
8	O-Ring	166687	1	32	Ball Bearing	112054	1
9	Throttle Valve	166934	1	33	Spindle	WP 116333-1AA0	1
10	Valve Bushing	166686	1	34	Gear	WP 116334-1TT0	1
11	Ball Bearing	112077	1	35	Set Screw	WP 116335-1JB0	1
12	Rear End Plate	166691	1	36	Ball Bearing	112028	1
13	Rotor	166935	1	37	Bearing Cap	WP 116337-1JB0	1
14	Rotor Blade	130659	4	38	Retainer Ring	133874	1
15	Pin	166651	1	39	Chuck Multi-craft 3/8"	55737	1
16	Cylinder	166652	1		Chuck Keyless 3/8"	180527	
17	Front End plate	166653	1		Chuck HD 3/8"	72597	
18	Ball Bearing	112635	2	40	Wave Washer	WP 101008-1TC0	1
19	Clamp Nut	WP 116319-1JB0	1	41	Spacer	130258	1
20	Washer	166654	1	42	Grease Fitting	151977	1
21	Ball Bearing	112029	2	43	Cover	WP 116343-1SP0	1
22	Internal Gear	166655	1	44	Air Inlet	166645	1