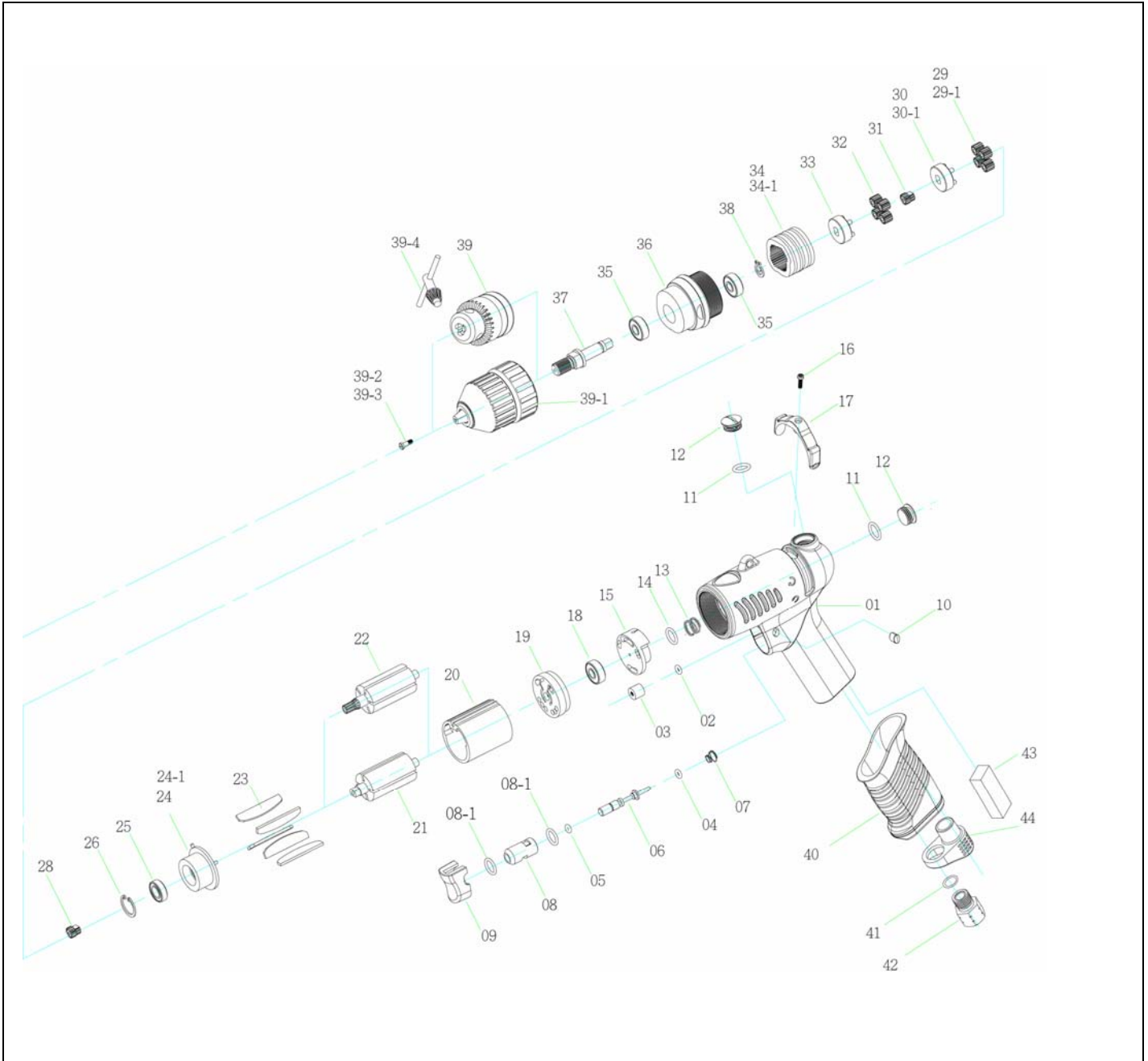




D229COM, D229COM-10005, D229COM-XT, D316COM 1/4" & 3/8" REVERSIBLE DRILL

Wespro Pneumatic Tools



No.	Description	Order Code	Q'ty	No.	Description	Order Code	Q'ty
1	Pistol Housing	225954	1	28	First Main Gear (D316COM)	225969	1
2	O Ring (5x1)	225835	1	29	First Planet Gear (D316COM)	225970	4
3	Blank Cap	225836	1	29-1	First Planet Gear (D229COM)	225971	3
4	O Ring (3.5x2)	225837	1	30	First Gear Cage (D316COM)	225972	1
5	Valve O-Ring (3x1.5)	225838	1	30-1	First Gear Cage (D229COM)	225973	1
6	Valve Pin	225839	1	31	Second Main Gear (D316COM)	225974	1
7	Cone Spring (0.45)	225840	1	32	Second Planet Gear (D316COM)	225975	4
8	Valve Bushing	225841	1	33	Second Gear Cage (D316COM)	225976	1
8-1	O Ring (8x1)	225842	2	34	Internal Gear (D316COM)	225977	1
9	Trigger	225843	1	34-1	Internal Gear (D229COM)	225978	1
10	Cap	225844	2	35	Ball Bearing (688ZZ)	141851	2
11	O Ring (P10)	225955	2	36	Clutch Housing	225979	1
12	Screw Cap	225845	2	37	Anvil (6.35Hex)	225980	1
13	Spring	225957	1	38	C Ring	225918	1
14	Valve O-Ring	225958	1	39	3/8" Chuck (D229COM, D316COM)	55737	1
15	Valve	225959	1		1/4"Chuck (D229COM-10005)	91354	
16	Set Screw (M2.6x12) and Washer	225849	1	39-1	3/8" Keyless Chuck (D229COM-XT)	180527	1
17	Switch	225960	1	39-2	Left Screw (D229COM-10005)	225981	1
18	Ball Bearing (624ZZ)	112052	1	39-3	Left Screw (D229COM, D229COM-XT, D316COM)	225982	1
19	End Plate	225961	1				
20	Cylinder	225962	1	39-4	Chuck Key (D229COM, D316COM)	46791	1
21	Rotor (D316COM)	225963	1		Chuck Key (D229COM-10005)	91379	
22	Rotor (D229COM)	225965	1	40	Pistol Cover	225983	1
23	Blade	225966	6	41	O Ring (P10)	225955	1
24	Front Plate (D316COM)	225967	1	42	Air Inlet Bushing (NPT)	225936	1
24-1	Front Plate (D229COM)	225968	1	43	Filter	225937	1
25	Ball Bearing (688ZZ)	141851	1	44	Silencer	225984	1
26	C Ring (D229COM)	225872	1				

D229COM,D229COM-10005, D229COM-XT, D316COM 08/31/07

Western Office 604-298-2933 Eastern Office 905-839-6111 www.wescoproductiontools.com