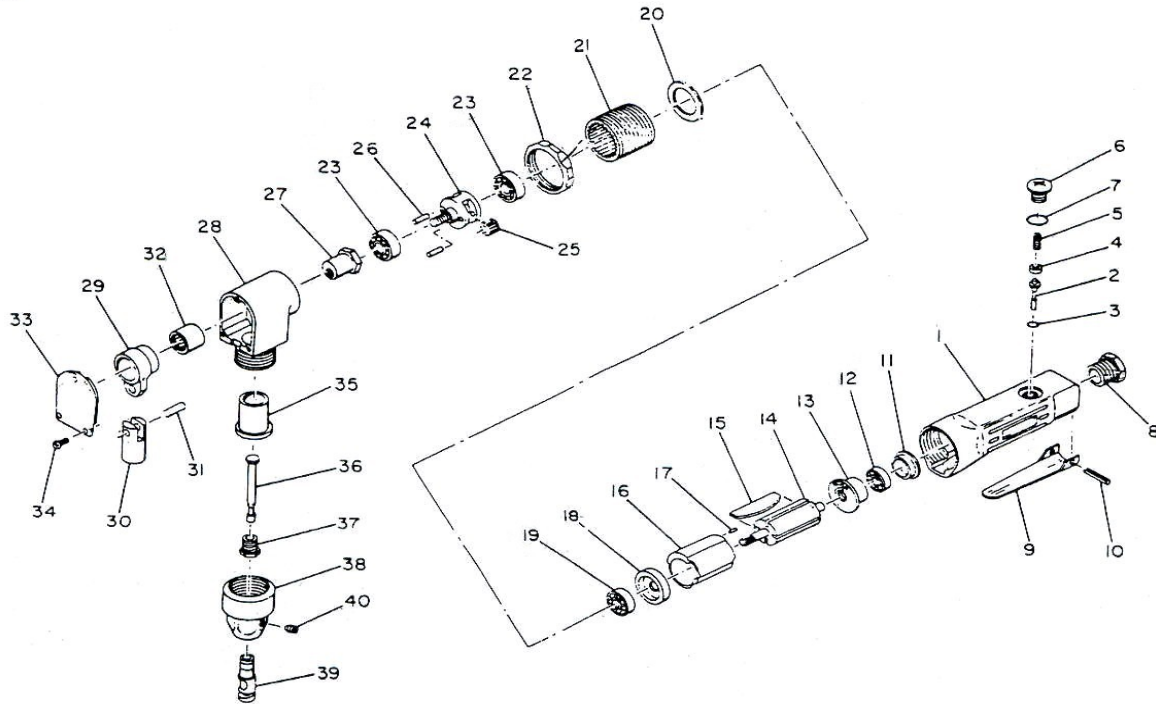




AN43

AIR NIBBLER

Wespro Pneumatic Tools



<u>No.</u>	<u>Description</u>	<u>Order Code</u>	<u>Qty</u>	<u>No.</u>	<u>Description</u>	<u>Order Code</u>	<u>Qty</u>
1	Motor Housing	122569	1	21	Gear Case	122598	1
2	Throttle Valve	122570	1	22	Gear Case Nut	122599	1
3	Throttle Valve Seal	122578	1	23	Ball Bearing	112030	2
4	Throttle Valve Spring Seat	122579	1	24	Spindle	122601	1
5	Throttle Valve Spring	122581	1	25	Planet Gear	122602	2
6	Throttle Valve Plug	122582	1	26	Planet Gear Pin	122603	2
7	Throttle Valve Plug Seal	122583	1	27	Eccentric Nut	122604	1
8	Inlet Bushing	122584	1	28	Nibbler Housing	122605	1
9	Throttle Lever	122585	1	29	Conn. Rod Ass'y (#29,30,31,32)	122608	1
10	Throttle Lever Pin	122586	1	30	Connecting Rod Shaft		1
11	End Plate Cap	122587	1	31	Pin		1
12	Ball Bearing	112054	1	32	Connecting Rod Bearing	122609	1
13	Rear End Plate	122589	1	33	Nibbler Housing Cover	122610	1
14	Rotor	122591	1	34	Housing Cover Screw	122611	3
15	Rotor Blade	122592	4	35	Connecting Rod Bushing	122612	1
16	Cylinder	122593	1	36	Cutter	103135	1
17	Cylinder Dowel	122594	1	37	Cutter Lock Nut	122613	1
18	Front End Plate	122595	1	38	Nibbler Housing Nut	122614	1
19	Ball Bearing	112040	1	39	Die	103137	1
20	Motor Clamp Washer	122597	1	40	Cutter Die Set Screw	122615	1