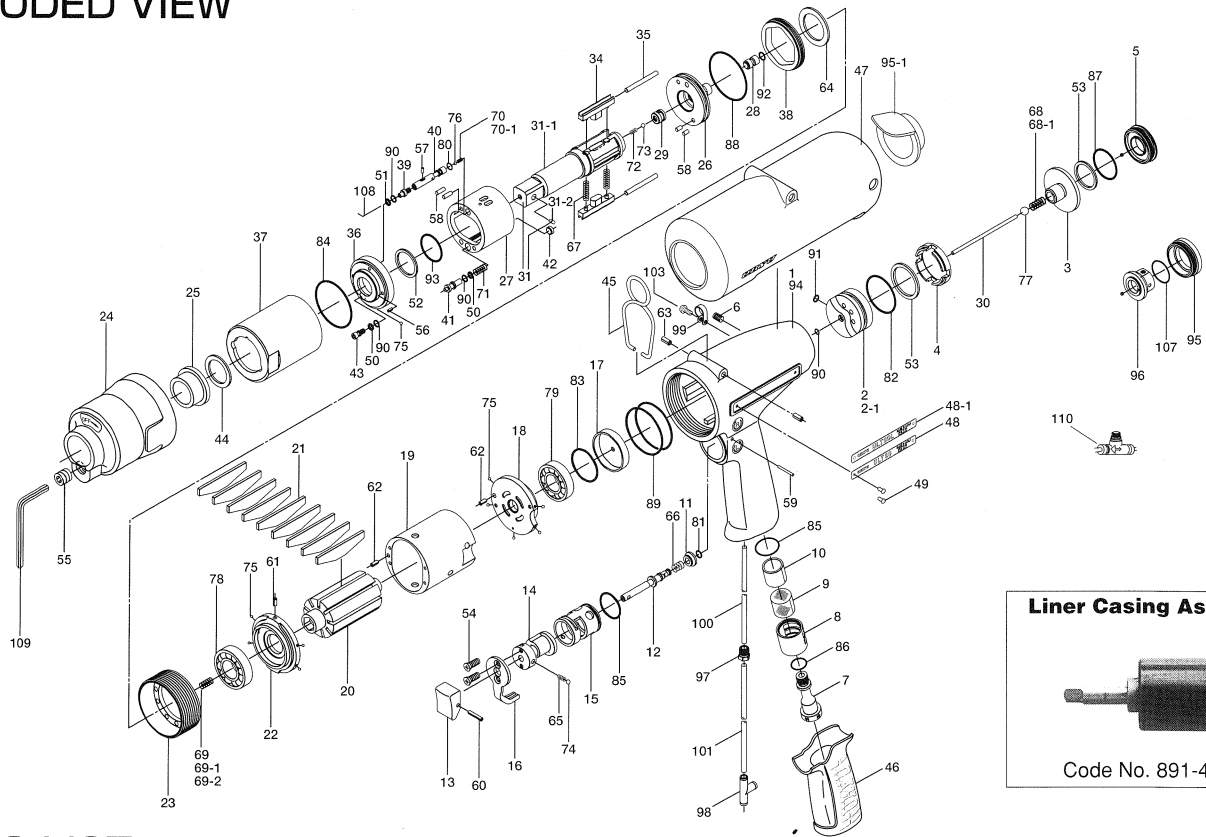


ULT90 SERIES OIL-PULSE WRENCHES

EXPLODED VIEW



PARTS LIST

Index No.	Code No.	Parts Name	Quantity	Index No.	Code No.	Parts Name	Quantity	Index No.	Code No.	Parts Name	Quantity
# 1	147-025-8	Handle	1	#39	174-907-2	Relief Valve Spindle	1	#73	981-001-0	Ball (3/32)	1
# 2	147-253-8	Shut-off Valve Bushing	1	#40	147-970-8	Relief Valve	1	#74	981-002-0	Ball (1/8)	1
# 2-1	147-253-9	Shut-off Valve Bushing for ULT90L	1	#41	147-972-8	Accumulator	1	#75	981-045-0	Ball (1.5mm)	10
# 3	147-254-9	Shut-off Valve	1	#42	147-908-9	Accumulator Cover	1	#76	981-150-0	Ball (3mm)	1
# 4	147-684-8	Buffer Spacer	1	#43	194-742-3	Oil Plug	1	#77	981-245-0	Ball (4.5mm)	1
# 5	147-019-8	Valve Cover	1	#44	147-327-8	Anvil Front Spacer	1	#78	982-903-0	Ball Bearing (6902)	1
# 6	150-108-5	Valve Plug	1	#45	174-790-0	Suspension Ring	1	#79	982-949-0	Ball Bearing (16001)	1
# 7	147-091-8	Air Inlet Bushing	1	#46	147-842-2	Handle Cover	1	#80	990-320-0	O-Ring (ARP568-003)	1
# 8	147-780-9	Exhaust Stack	1	#47	147-840-9	Handle Protector	1	#81	990-306-0	O-Ring (ARP568-004)(H)	1
# 9	147-042-8	Silencer	1	#48	147-924-8	Name Plate	1	#82	990-331-0	O-Ring (JW1530-21)	1
#10	147-835-8	Filter (K100)	1	#48-1	147-924-9	Name Plate for ULT90L	1	#83	990-334-0	O-Ring (JW1530-24)	1
#10-1	147-835-9	Filter (K200) for ULT90L	1	#49	930-205-0	Pin (No.0x2.6)	2	#84	990-337-0	O-Ring (JW1530-27)	1
#11	147-100-8	Valve	1	#50	944-003-0	Supporting Ring (3x5x1)	2	#85	990-914-0	O-Ring (SNS-16)	2
#12	147-104-8	Valve Rod	1	#51	944-203-0	Supporting Ring (3.1x5x1)	1	#86	990-919-0	O-Ring (SNS-22)	1
#13	147-107-2	Valve Lever	1	#52	944-215-0	Supporting Ring (16x19.9x1.5)	1	#87	990-923-0	O-Ring (SNS-26)	1
#14	147-210-8	Reverse Valve	1	#53	944-222-0	Supporting Ring (20x27.5x1.5)	2	#88	990-924-0	O-Ring (SNS-30)	1
#15	147-211-8	Reverse Valve Bushing	1	#54	948-423-0	Allen Flush Head Screw (M3x6)	2	#89	990-932-0	O-Ring (SNS-42)	2
#16	147-212-8	Reverse Lever	1	#55	966-099-0	Allen Head Plug (1/16) (GM)	1	#90	990-970-0	O-Ring (SNS-2)(NOK)	4
#17	147-291-9	Rear Plate Spacer	1	#56	969-449-0	Pin (G) (3x6)	1	#91	990-971-0	O-Ring (SNS-3)(NOK)	1
#18	147-285-8	Rear Plate	1	#57	970-091-0	Pin (H) (2x4.5)	1	#92	990-305-0	O-Ring (ARP568-003)(KS)	1
#19	147-286-8	Cylinder	1	#58	970-205-0	Pin (H) (3x7)	4	#93	992-021-0	SU-Ring (Q-16)(NTN)	1
#20	147-287-8	Rotor	1	#59	971-125-0	Pin (2x25)	1	PARTS FOR (TM)-TYPE			
#21	147-288-8	Blade (PC)	9	#60	973-014-0	Roll Pin (2x14)	1	#94	851-010-1	Handle	1
#22	147-289-8	Front Plate	1	#61	973-006-0	Roll Pin (2x6)	1	#95	851-011-1	Valve Cover	1
#23	147-036-8	Hammer Casing Connector	1	#62	973-068-0	Roll Pin (2.5x8)	2	#95-1	851-060-1	Cap	1
#24	147-439-8	Front Casing	1	#63	973-308-0	Roll Pin (5x8)	1	#96	851-077-1	Valve Spacer	1
#25	147-328-8	Anvil Bushing	1	#64	975-780-0	Adjusting Spacer (21x13xt)	1	#97	850-610-1	Connecting Screw	1
#26	147-901-8	Rear Liner Plate	1	#65	976-006-0	Spring (3x5)(0.4)	1	#98	909-442-0	Quick Exhaust (AQ240F-04-00)	1
#27	147-902-8	Liner	1	#66	976-643-0	Spring (7.5x9.7)(0.9)	1	#99	929-050-0	Coupling (Φ3)	1
#28	145-546-6	Piston	1	#67	976-794-0	Spring (3.8x33)(0.5)WPC	2	#100	935-240-0	Nylon Tube (18NY)	1
#29	145-929-6	Check Valve Cover	1	#68	977-036-0	Cone Spring	2	#101	935-350-0	Polyurethane Hose (F-1504)	1
#30	147-130-8	Pisotn Rod (2.1x64.5)	1	#68-1	977-037-0	Cone Spring (3.5x4.7x8.3)(0.5) for ULT90L	1	#103	957-006-0	Cross Pan Head Screw (M3x6)	1
#31	891-551-1	Anvil CP (P)	1	#69	976-650-0	Spring (3.3x16)(0.45) [Standard]	1	#107	990-920-0	O Ring (SNS-25)	1
#31-1	147-319-8	Anvil (O)	1	#69-1	976-688-0	Spring (3.3x17.5)(0.4) [Weak]	1	ACCESSORIES			
#31-2	891-304-1	Socket Pin Assembly	1	#69-2	976-662-0	Spring (3.3x18)(0.45) [Strong]	1	#108	939-091-0	Allen Wrench (1.5)	1
#34	147-440-9	Driving Blade	2	#70	976-652-0	Spring (2.9x7.9)(0.45)	1	#109	939-105-0	Allen Wrench (4)	1
#35	147-974-8	Roller (2.5x30)	2	#70-1	976-656-0	Spring (2.9x8.5)(0.4)	1	#110	909-449-0	Speed Controller	1
#36	147-904-8	Front Liner Plate	1	#71	976-642-0	Spring (4.8x24.5)(0.6)	1				
#37	147-905-8	Liner Casing	1	#72	976-645-0	Spring (2.4x5)(0.3)	1				
#38	147-906-8	Liner Casing Setter	1								

When ordering spare parts, please Specify tool type, code number and part name.

Printed Japan



URYU SEISAKU, LTD. Osaka Japan

For further information, please contact at any time your nearest URYU distributor.

OKA-474-05-07-28-2004