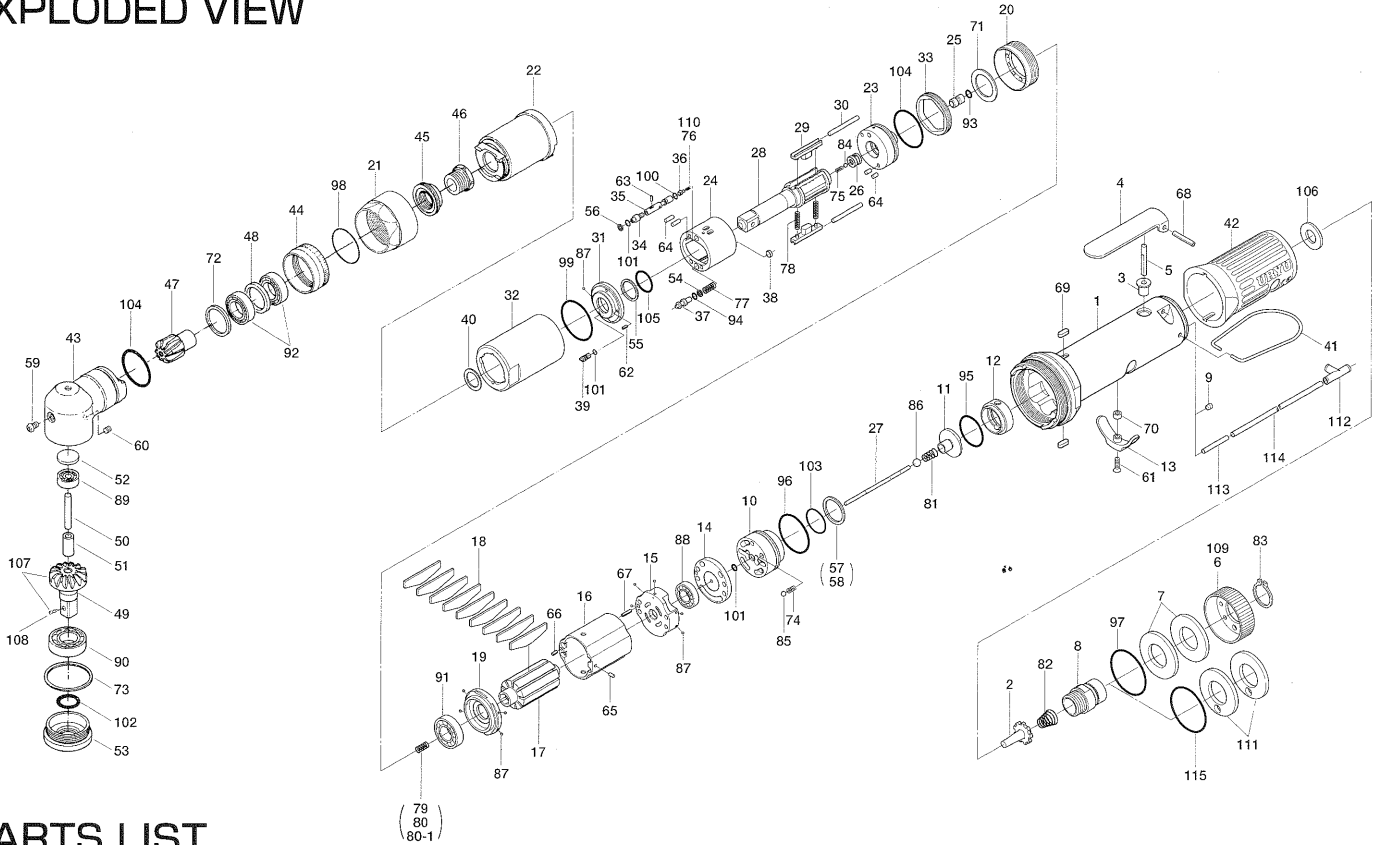


ULT70CH SERIES OIL-PULSE WRENCHES

EXPLODED VIEW



PARTS LIST

Index No.	Code No.	Parts Name	Quantity	Index No.	Code No.	Parts Name	Quantity	Index No.	Code No.	Parts Name	Quantity
# 1	127-025-7	Casing	1	#44	127-382-7	Hammer Casing Nut	1	#84	981-001-0	Ball (3/32)	1
# 2	259-100-0	Valve	1	#45	160-797-7	Ball Bearing Setting Spindle	1	#85	981-002-0	Ball (1/8)	1
# 3	161-103-3	Valve Rod Bushing	1	#46	160-799-7	Ball Bearing Setting Spindle Collar	1	#86	981-003-0	Ball (5/32)	1
# 4	196-107-7	Valve Lever	1	#47	171-420-0	Driving Gear	1	#87	981-045-0	Ball (1.5mm)	10
# 5	128-104-8	Valve Rod	1	#48	179-423-6	Driving Gear Bushing Spacer	1	#88	982-014-0	Ball Bearing (607)	1
# 6	128-782-8	Exhaust Cover	1	#49	171-430-0	Driven Gear (O)	1	#89	982-021-0	Ball Bearing (626)	1
# 7	128-835-8	Filter (K200)	2	#50	171-431-0	Driven Gear Spindle	1	#90	982-103-0	Ball Bearing (6003)	1
# 8	128-091-8	Air Inlet Bushing	1	#51	171-432-0	Driven Gear Collar	1	#91	982-902-0	Ball Bearing (6901)	1
# 9	147-064-6	Filler	1	#52	562-391-7	Spindle Upper Plate	1	#92	982-904-0	Ball Bearing (6903)	2
#10	129-253-2	Shut-Off Valve Bushing	1	#53	171-488-0	Angle Casing Cover	1	#93	990-305-0	O-Ring (ARP568-003) (KS)	1
#11	145-254-6	Shut-Off Valve	1	#54	944-002-0	Supporting Ring (2.6×4.5×1)	1	#94	990-320-0	O-Ring (ARP568-003)	1
#12	129-684-6	Bumper Spacer	1	#55	944-013-0	Supporting Ring (P12)	1	#95	990-329-0	O-Ring (JW1530-19)	1
#13	161-212-3	Reverse Lever	1	#56	944-203-0	Supporting Ring (3.1×5×1)	1	#96	990-331-0	O-Ring (JW1530-21)	1
#14	128-291-8	Rear Plate Spacer	1	#57	944-216-0	Supporting Ring (14×20×1.85)	1	#97	990-603-0	O-Ring (28.5×1.3)	1
#15	129-285-2	Rear Plate	1	#58	944-218-0	Supporting Ring (14×20×1.9)	1	#98	990-605-0	O-Ring (25×1.45)	1
#16	129-286-6	Cylinder	1	#59	945-949-0	Hexagon Round Head Bolt (M5×6)	1	#99	990-334-0	O-Ring (JW1530-24)	1
#17	129-287-6	Rotor	1	#60	954-206-0	Allen Head Cone Point Screw (M5×6)	1	#100	990-621-0	O-Ring (3.8×1.8×1.0)	1
#18	129-288-6	Blade (PC)	9	#61	948-426-0	Allen Flush Head Screw (M3×12)	1	#101	990-900-0	O-Ring (SNS-2)	3
#19	128-289-8	Front Plate	1	#62	969-449-0	Pin (G) (3×6)	1	#102	990-156-0	O-Ring (SNS-16) (NTN)	1
#20	127-036-7	Hammer Casing Connector	1	#63	970-013-0	Pin (H) (1.5×4)	1	#103	990-914-0	O-Ring (SNS-16)	1
#21	180-081-4	Front Case Nut	1	#64	970-204-0	Pin (H) (3×6)	4	#104	990-923-0	O-Ring (SNS-26)	2
#22	127-439-7	Front Casing	1	#65	971-102-0	Pin (2×3.8)	1	#105	992-020-0	SU-Ring (Q12) (NTN)	1
#23	147-901-6	Rear Liner Plate	1	#66	973-008-0	Roll Pin (2×8)	1	#106	996-424-0	Urethane Packing (16×9×2)	1
#24	147-902-6	Liner	1	#67	973-018-0	Roll Pin (2×18)	1	#107	891-428-1	Driven Gear Assembly	1
#25	145-546-6	Piston	1	#68	973-122-0	Roll Pin (3×22)	1	#108	891-304-1	Socket Snap Pin Assembly	1
#26	145-929-6	Check Valve Cover	1	#69	974-008-0	Key (3×8)	2	Parts for ULT70CHL			
#27	129-130-6	Operating Rod (2.1×70.7)	1	#70	975-004-0	Spacer (5.5×3.1×2.7)	1	#109	129-782-0	Exhaust Cover	1
#28	147-319-6	Anvil	1	#71	975-752-0	Adjusting Spacer (15×10×t)	2	#110	976-836-0	Spring (2.9×7) (0.4)	1
#29	147-440-6	Driving Blade	2	#72	975-803-0	Adjusting Spacer (30×26×t)	1	Parts for TM-Type			
#30	147-974-6	Roller (2.5×28)	2	#73	975-875-0	Adjusting Spacer (44×40.2×t)	1	#111	851-053-1	Filter (K200)	2
#31	147-904-6	Front Liner Plate	1	#74	976-006-0	Spring (3×5) (0.4)	1	#112	909-442-0	Quick Exhaust (AQ240F-04-00)	1
#32	147-905-6	Liner Casing	1	#75	976-645-0	Spring (2.4×5) (0.3)	1	#113	935-240-0	Nylon Tube (18NY)	1
#33	147-906-6	Liner Casing Setter	1	#76	976-835-0	Spring (2.75×7.2) (0.4)	1	#114	935-350-0	Polyurethane Hose (F-1504)	1
#34	174-907-2	Relief Valve Spindle	1	#77	976-666-0	Spring (4.3×23) (0.55)	1	#115	990-333-0	O-Ring (JW1530-23)	1
#35	127-970-7	Relief Valve	1	#78	976-788-0	Spring (3.5×25) (0.45)WPC	2	ACCESSORIES			
#36	144-270-0	Pressure Regulator Valve	1	#79	976-650-0	Spring (3.3×16) (0.45)Standard	1	#116	939-091-0	Allen Wrench (1.5mm)	1
#37	145-972-6	Accumulator	1	#80	976-662-0	Spring (Yellow) (3.3×18) (0.45)Strong	1	#117	909-449-0	Speed Controller (AS1001F-04)	1
#38	145-908-7	Accumulator Cover	1	#80-1	976-661-0	Spring (Black) (3.3×17) (0.4)Weak	1				
#39	194-742-0	Oil Plug	1	#81	977-045-0	Cone Spring (4.0×4.6×9) (0.45)	1				
#40	145-327-6	Anvil Front Spacer	1	#82	977-227-0	Cone Spring (9×12×25) (0.8)	1				
#41	191-790-1	Suspension Ring	1	#83	979-358-0	Inner Snap Ring (ISTW-17)	1				
#42	129-842-6	Handle Protector	1								
#43	171-441-0	Angle Casing	1								

When ordering spare parts, please Specify tool type, code number and part name.

Printed Japan



URYU SEISAKU, LTD. Osaka Japan

For further information, please contact at any time your nearest URYU distributor.

OKA-522-07-03-19-2001