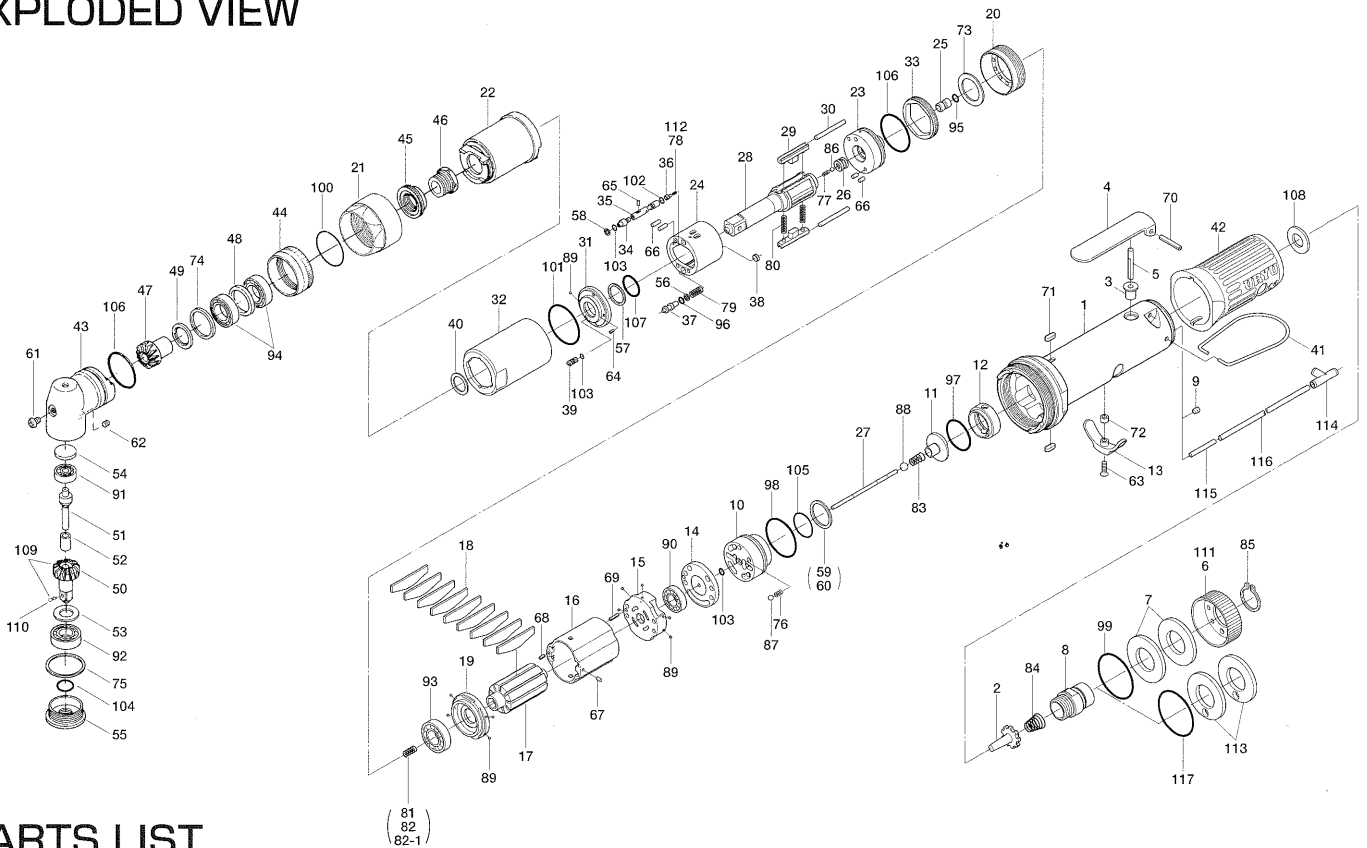


ULT70C SERIES OIL-PULSE WRENCHES

EXPLODED VIEW



PARTS LIST

| Index No. | Code No. | Parts Name | Quantity | Index No. | Code No. | Parts Name | Quantity | Index No. | Code No. | Parts Name | Quantity |
|-----------|-----------|--------------------------|----------|-----------|-----------|---------------------------------------|----------|----------------------------|-----------|--------------------------------|----------|
| # 1 | 127-025-7 | Casing | 1 | #44 | 127-382-7 | Hammer Casing Nut | 1 | #83 | 977-045-0 | Cone Spring (4.0×4.6×9) (0.45) | 1 |
| # 2 | 259-100-0 | Valve | 1 | #45 | 160-797-7 | Ball Bearing Setting Spindle | 1 | #84 | 977-227-0 | Cone Spring (9×12×25) (0.8) | 1 |
| # 3 | 161-103-3 | Valve Rod Bushing | 1 | #46 | 160-799-7 | Ball Bearing Setting Spindle Nut | 1 | #85 | 979-358-0 | Inner Snap Ring (ISTW-17) | 1 |
| # 4 | 196-107-7 | Valve Lever | 1 | #47 | 179-420-6 | Driving Gear | 1 | #86 | 981-001-0 | Ball (3/32) | 1 |
| # 5 | 128-104-8 | Valve Rod | 1 | #48 | 179-423-6 | Driving Gear Bushing Spacer | 1 | #87 | 981-002-0 | Ball (1/8) | 1 |
| # 6 | 128-782-8 | Exhaust Cover | 1 | #49 | 179-425-6 | Driving Gear Spacer | 1 | #88 | 981-003-0 | Ball (5/32) | 1 |
| # 7 | 128-835-8 | Filter (K200) | 2 | #50 | 020-430-1 | Driven Gear (O) | 1 | #89 | 981-045-0 | Ball (1.5mm) | 10 |
| # 8 | 128-091-8 | Air Inlet Bushing | 1 | #51 | 188-431-7 | Driven Gear Spindle | 1 | #90 | 982-014-0 | Ball Bearing (607) | 1 |
| # 9 | 147-064-6 | Filler | 1 | #52 | 020-432-1 | Driven Gear Collar | 1 | #91 | 982-021-0 | Ball Bearing (626) | 1 |
| #10 | 129-253-2 | Shut-Off Valve Bushing | 1 | #53 | 020-433-1 | Driven Gear Spacer | 1 | #92 | 982-101-0 | Ball Bearing (6001) | 1 |
| #11 | 145-254-6 | Shut-Off Valve | 1 | #54 | 562-391-7 | Spindle Upper Plate | 1 | #93 | 982-902-0 | Ball Bearing (6901) | 1 |
| #12 | 129-684-6 | Bumper Spacer | 1 | #55 | 179-488-6 | Angle Casing Cover | 1 | #94 | 982-904-0 | Ball Bearing (6903) | 2 |
| #13 | 161-212-3 | Reverse Lever | 1 | #56 | 944-002-0 | Supporting Ring (2.6×4.5×1) | 1 | #95 | 990-305-0 | O-Ring (ARP568-003) (KS) | 1 |
| #14 | 128-291-8 | Rear Plate Spacer | 1 | #57 | 944-013-0 | Supporting Ring (P12) | 1 | #96 | 990-320-0 | O-Ring (ARP568-003) | 1 |
| #15 | 129-285-2 | Rear Plate | 1 | #58 | 944-203-0 | Supporting Ring (3.1×5.1) | 1 | #97 | 990-329-0 | O-Ring (JW1530-19) | 1 |
| #16 | 129-286-6 | Cylinder | 1 | #59 | 944-216-0 | Supporting Ring (14×20×1.85) | 1 | #98 | 990-331-0 | O-Ring (JW1530-21) | 1 |
| #17 | 129-287-6 | Rotor | 1 | #60 | 944-218-0 | Supporting Ring (14×20×1.9) | 1 | #99 | 990-603-0 | O-Ring (28.5×1.3) | 1 |
| #18 | 129-288-6 | Blade (PC) | 9 | #61 | 945-949-0 | Hexagon Round Head Bolt (M5×6) | 1 | #100 | 990-605-0 | O-Ring (25×1.45) | 1 |
| #19 | 128-289-8 | Front Plate | 1 | #62 | 954-206-0 | Allen Head Cone Point Screw (M5×6) | 1 | #101 | 990-334-0 | O-Ring (JW1530-24) | 1 |
| #20 | 127-036-7 | Hammer Casing Connector | 1 | #63 | 948-426-0 | Allen Flush Head Screw (M3×12) | 1 | #102 | 990-621-0 | O-Ring (3.8×1.8×1.0) | 1 |
| #21 | 180-081-4 | Front Case Nut | 1 | #64 | 969-449-0 | Pin (G) (3×6) | 1 | #103 | 990-900-0 | O-Ring (SNS-2) | 3 |
| #22 | 127-439-7 | Front Casing | 1 | #65 | 970-013-0 | Pin (H) (1.5×4) | 1 | #104 | 990-910-0 | O-Ring (SNS-12.5) | 1 |
| #23 | 147-901-6 | Rear Liner Plate | 1 | #66 | 970-204-0 | Pin (H) (3×6) | 1 | #105 | 990-914-0 | O-Ring (SNS-16) | 1 |
| #24 | 147-902-6 | Liner | 1 | #67 | 971-102-0 | Pin (2×3.8) | 1 | #106 | 990-923-0 | O-Ring (SNS-26) | 2 |
| #25 | 145-546-6 | Piston | 1 | #68 | 973-008-0 | Roll Pin (2×8) | 1 | #107 | 992-020-0 | SU-Ring (Q12) (NTN) | 1 |
| #26 | 145-929-6 | Check Valve Cover | 1 | #69 | 973-018-0 | Roll Pin (2×18) | 1 | #108 | 996-424-0 | Urethane Packing (16×9×2) | 1 |
| #27 | 129-130-6 | Operating Rod (2.1×70.7) | 1 | #70 | 973-122-0 | Roll Pin (3×22) | 1 | #109 | 891-346-1 | Driven Gear Assembly | 1 |
| #28 | 147-319-6 | Anvil | 1 | #71 | 974-008-0 | Key (3×8) | 2 | #110 | 891-300-1 | Socket Pin Assembly | 1 |
| #29 | 147-440-6 | Driving Blade | 2 | #72 | 975-004-0 | Spacer (5.5×3.1×2.7) | 1 | Parts for ULT70CL | | | |
| #30 | 147-974-6 | Roller (2.5×28) | 2 | #73 | 975-752-0 | Adjusting Spacer (15×10×t) | 1 | #111 | 129-782-0 | Exhaust Cover | 1 |
| #31 | 147-904-6 | Front Liner Plate | 1 | #74 | 975-803-0 | Adjusting Spacer (30×26×t) | 1 | #112 | 976-673-0 | Spring (2.8×7.8) (0.4) | 1 |
| #32 | 147-905-6 | Liner Casing | 1 | #75 | 975-836-0 | Adjusting Spacer (36×32.5×t) | 1 | Parts for (TM)-Type | | | |
| #33 | 147-906-6 | Liner Casing Setter | 1 | #76 | 976-006-0 | Spring (3×5) (0.4) | 1 | #113 | 851-053-1 | Filter (K200) | 2 |
| #34 | 174-907-2 | Relief Valve Spindle | 1 | #77 | 976-645-0 | Spring (2.4×5) (0.3) | 1 | #114 | 909-442-0 | Quick Exhaust (AQ240F-04-00) | 1 |
| #35 | 127-970-7 | Relief Valve | 1 | #78 | 976-604-0 | Spring (2.9×7.1) (0.45) | 1 | #115 | 935-240-0 | Nylon Tube (18NY) | 1 |
| #36 | 144-270-0 | Pressure Regulator Valve | 1 | #79 | 976-666-0 | Spring (4.3×23) (0.55) | 1 | #116 | 935-350-0 | Polyurethane Hose (F-1504) | 1 |
| #37 | 145-972-6 | Accumulator | 1 | #80 | 976-788-0 | Spring (3.5×25) (0.45)WPC | 2 | #117 | 990-333-0 | O-Ring (JW1530-23) | 1 |
| #38 | 145-908-7 | Accumulator Cover | 1 | #81 | 976-650-0 | Spring (3.3×16) (0.45)Standard | 1 | ACCESSORIES | | | |
| #39 | 194-742-0 | Oil Plug | 1 | #82 | 976-697-0 | Spring (3.3×17) (0.45)Standard-Strong | 1 | #118 | 939-091-0 | Allen Wrench (1.5mm) | 1 |
| #40 | 145-327-6 | Anvil Front Spacer | 1 | #82-1 | 976-661-0 | Spring (3.3×17) (0.4) (Black)Weak | 1 | #119 | 909-449-0 | Speed Controller (AS1001F-04) | 1 |
| #41 | 191-790-1 | Suspension Ring | 1 | | | | | | | | |
| #42 | 129-842-6 | Handle Protector | 1 | | | | | | | | |
| #43 | 160-441-7 | Angle Casing | 1 | | | | | | | | |

When ordering spare parts, please Specify tool type, code number and part name.

Printed Japan



URYU SEISAKU, LTD. Osaka Japan

For further information, please contact at any time your nearest URYU distributor.

OKA-521-07-03-14-2001