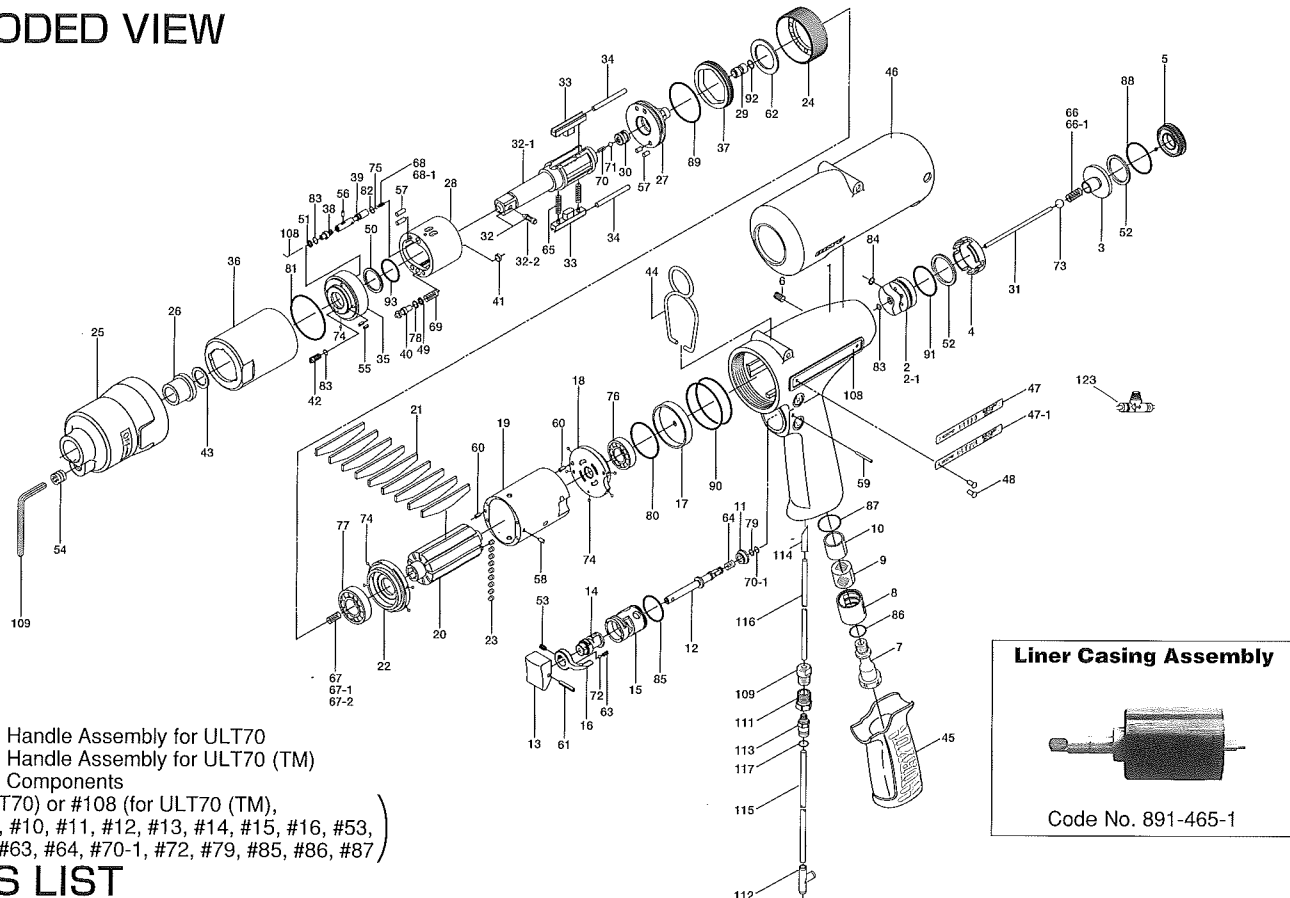


ULT70 SERIES OIL-PULSE WRENCHES

EXPLODED VIEW



147-984-6 Handle Assembly for ULT70
852-513-1 Handle Assembly for ULT70 (TM)
Components

(#1 for ULT70) or #108 for ULT70 (TM),
(#7, #8, #9, #10, #11, #12, #13, #14, #15, #16, #53,
#59, #61, #63, #64, #70-1, #72, #79, #85, #86, #87)

PARTS LIST

| Index No. | Code No. | Parts Name | Quantity | Index No. | Code No. | Parts Name | Quantity | Index No. | Code No. | Parts Name | Quantity |
|-----------|-----------|--------------------------|----------|-----------|-----------|----------------------------|----------|----------------------------|-----------|--------------------------------|----------|
| # 1 | 147-025-6 | ○ Handle | 1 | #40 | 145-972-6 | Accumulator | 1 | #78 | 990-320-0 | ○ O Ring (ARP568-003) | 1 |
| # 2 | 147-253-6 | Shut-off Valve Bushing | 1 | #41 | 145-908-7 | Accumulator Cover | 1 | #79 | 990-306-0 | ○ O Ring (ARP568-004)(H) | 1 |
| # 3 | 147-254-6 | Shut-off Valve | 1 | #42 | 194-742-0 | Oil Plug | 1 | #80 | 990-327-0 | ○ O Ring (JW1530-18) | 1 |
| # 4 | 147-684-6 | Cushion Spacer | 1 | #43 | 178-327-9 | Anvil Front Spacer | 1 | #81 | 990-334-0 | ○ O Ring (JW1530-24) | 1 |
| # 5 | 147-019-6 | Valve Cover | 1 | #44 | 174-790-0 | Suspension Ring | 1 | #82 | 990-621-0 | ○ O Ring (3.8 × 1.8 × 1.0) | 1 |
| # 6 | 150-108-5 | Valve Plug | 1 | #45 | 147-842-2 | Handle Cover | 1 | #83 | 990-900-0 | ○ O Ring (SNS-2) | 3 |
| # 7 | 147-091-2 | ○ Air Inlet Bushing | 1 | #46 | 147-840-7 | Casing Cover | 1 | #84 | 990-901-0 | ○ O Ring (SNS-3) | 1 |
| # 8 | 147-780-3 | ○ Exhaust Stack | 1 | #47 | 147-924-6 | Name Plate | 1 | #85 | 990-912-0 | ○ O Ring (SNS-14) | 1 |
| # 9 | 147-042-2 | ○ Silencer | 1 | #48 | 930-205-0 | Pin (No.0×2.6) | 2 | #86 | 990-914-0 | ○ O Ring (SNS-16) | 1 |
| #10 | 147-835-3 | ○ Filter (K200) | 1 | #49 | 944-002-0 | Support Ring (2.6×4.5×1) | 1 | #87 | 990-916-0 | ○ O Ring (SNS-18) | 1 |
| #11 | 147-100-3 | ○ Valve | 1 | #50 | 944-013-0 | Support Ring (P-12) | 1 | #88 | 990-918-0 | ○ O Ring (SNS-20) | 1 |
| #12 | 142-104-6 | ○ Valve Rod | 1 | #51 | 944-203-0 | Support Ring (3.1×5×1) | 1 | #89 | 990-923-0 | ○ O Ring (SNS-26) | 1 |
| #13 | 147-107-2 | ○ Valve Lever | 1 | #52 | 944-220-0 | Support Ring (16×22.5×1.5) | 2 | #90 | 990-929-0 | ○ O Ring (SNS-36) | 2 |
| #14 | 147-210-2 | ○ Reverse Valve | 1 | #53 | 952-106-0 | ○ Allen Head Screw(M4×6) | 1 | #91 | 990-979-0 | ○ O Ring (SNS-20) | 1 |
| #15 | 147-211-2 | ○ Reverse Valve Bushing | 1 | #54 | 966-099-0 | Allen Head Plug (NPT1/16) | 1 | #92 | 990-305-0 | ○ O Ring (ARP568-003) | 1 |
| #16 | 480-212-8 | ○ Reverse Lever | 1 | #55 | 969-449-0 | Pin (G) (3×6)1/2 | 1 | #93 | 992-020-0 | SU Ring (Q12) | 1 |
| #17 | 145-291-7 | Rear Plate Spacer | 1 | #56 | 970-013-0 | Pin (H) (1.5 × 4) | 1 | PARTS FOR ULT70L | | | |
| #18 | 147-285-6 | Rear Plate | 1 | #57 | 970-204-0 | Pin (H) (3×6) | 4 | # 2-1 | 147-253-7 | Shut-off Valve Bushing | 1 |
| #19 | 147-286-6 | Cylinder | 1 | #58 | 971-102-0 | Pin (2×3.8) | 1 | #47-1 | 147-924-7 | Name Plate | 1 |
| #20 | 147-287-6 | Rotor | 1 | #59 | 971-123-0 | ○ Pin (2×23) | 1 | #66-1 | 977-045-0 | Cone Spring (4.0×4.6×9) | 1 |
| #21 | 147-288-6 | Blade (PC) | 9 | #60 | 973-008-0 | Roll Pin (2×8) | 2 | #68-1 | 976-677-0 | Spring (2.8×7) | 1 |
| #22 | 147-289-6 | Front Plate | 1 | #61 | 973-014-0 | ○ Roll Pin (2×14) | 1 | PARTS FOR (TM)-TYPE | | | |
| #23 | 147-064-6 | Plug | 9 | #62 | 975-752-0 | Adjusting Spacer (15×10×1) | 1 | #108 | 852-503-1 | Handle | 1 |
| #24 | 147-036-6 | Hammer Casing Connector | 1 | #63 | 976-006-0 | ○ Spring (3×5) | 1 | #109 | 851-967-1 | Plug | 1 |
| #25 | 147-439-6 | Front Casing | 1 | #64 | 976-457-0 | ○ Spring (7×12) | 1 | #111 | 851-955-1 | Connecting Screw | 1 |
| #26 | 190-328-6 | Anvil Bushing | 1 | #65 | 976-788-0 | Spring (3.5×25) WPC | 2 | #112 | 909-442-0 | Quick Exhaust (AQ240F-04-00) | 1 |
| #27 | 147-901-6 | Rear Liner Plate | 1 | #66 | 977-056-0 | Cone Spring (4.1×4.7×9.4) | 1 | #113 | 933-281-0 | One touch Connector (KJH04-M5) | 1 |
| #28 | 147-902-6 | Liner | 1 | #67 | 976-650-0 | Spring (3.3×16) [Standard] | 1 | #114 | 935-240-0 | Nylon Tube (18NY) | 1 |
| #29 | 145-546-6 | Piston | 1 | #67-1 | 976-661-0 | Spring (3.3×17) [Weaker] | 1 | #115 | 935-350-0 | Polyurethane Hose (F-1504) | 1 |
| #30 | 145-929-6 | Check Valve Cover | 1 | #67-2 | 976-662-0 | Spring (3.3×18) [Strong] | 1 | #116 | 935-358-0 | Polyurethane Hose (TU-0212) | 1 |
| #31 | 147-130-6 | Operating Rod (2.1×60.5) | 1 | #68 | 976-676-0 | Spring (2.7×7.4) | 1 | #117 | 990-320-0 | ○ O Ring (ARP568-003) | 1 |
| #32 | 891-550-1 | Anvil CP (P) | 1 | #69 | 976-666-0 | Spring (4.3×23) | 1 | ACCESSORIES | | | |
| #32-1 | 18E-319-3 | Anvil | 1 | #70 | 976-645-0 | Spring (2.4×5) | 1 | #120 | 940-114-0 | Air Hose Nipple (NPT 1/4×3/8) | 1 |
| #32-2 | 891-300-1 | Socket Pin Assembly | 1 | #70-1 | 979-405-0 | ○ Outer Snap Ring (E2.5) | 1 | #121 | 939-091-0 | Allen Wrench (1.5) | 1 |
| #33 | 147-440-6 | Driving Blade | 2 | #71 | 981-001-0 | Ball (3/32) | 1 | #122 | 939-105-0 | Allen Wrench (4) | 1 |
| #34 | 147-974-6 | Roller Pin (2.5×28) | 2 | #72 | 981-002-0 | ○ Ball (1/8) | 1 | #123 | 909-449-0 | Speed Controller(AS100F-04) | 1 |
| #35 | 147-904-6 | Front Liner Plate | 1 | #73 | 981-003-0 | Ball (5/32) | 1 | | | | |
| #36 | 147-905-6 | Liner Casing | 1 | #74 | 981-045-0 | Ball (1.5mm) | 10 | | | | |
| #37 | 147-906-6 | Liner Casing Cover | 1 | #75 | 981-150-0 | Ball (3mm) | 1 | | | | |
| #38 | 174-907-2 | Relief Valve Spindle | 1 | #76 | 982-014-0 | Ball Bearing (607) | 1 | | | | |
| #39 | 147-970-6 | Relief Valve | 1 | #77 | 982-902-0 | Ball Bearing (6901) | 1 | | | | |

When ordering spare parts, please specify tool type, code number and part name.

Printed Japan



URYU SEISAKU, LTD. Osaka Japan

For further information, please contact at any time your nearest URYU distributor.

OKA-473-11-11-02-1510