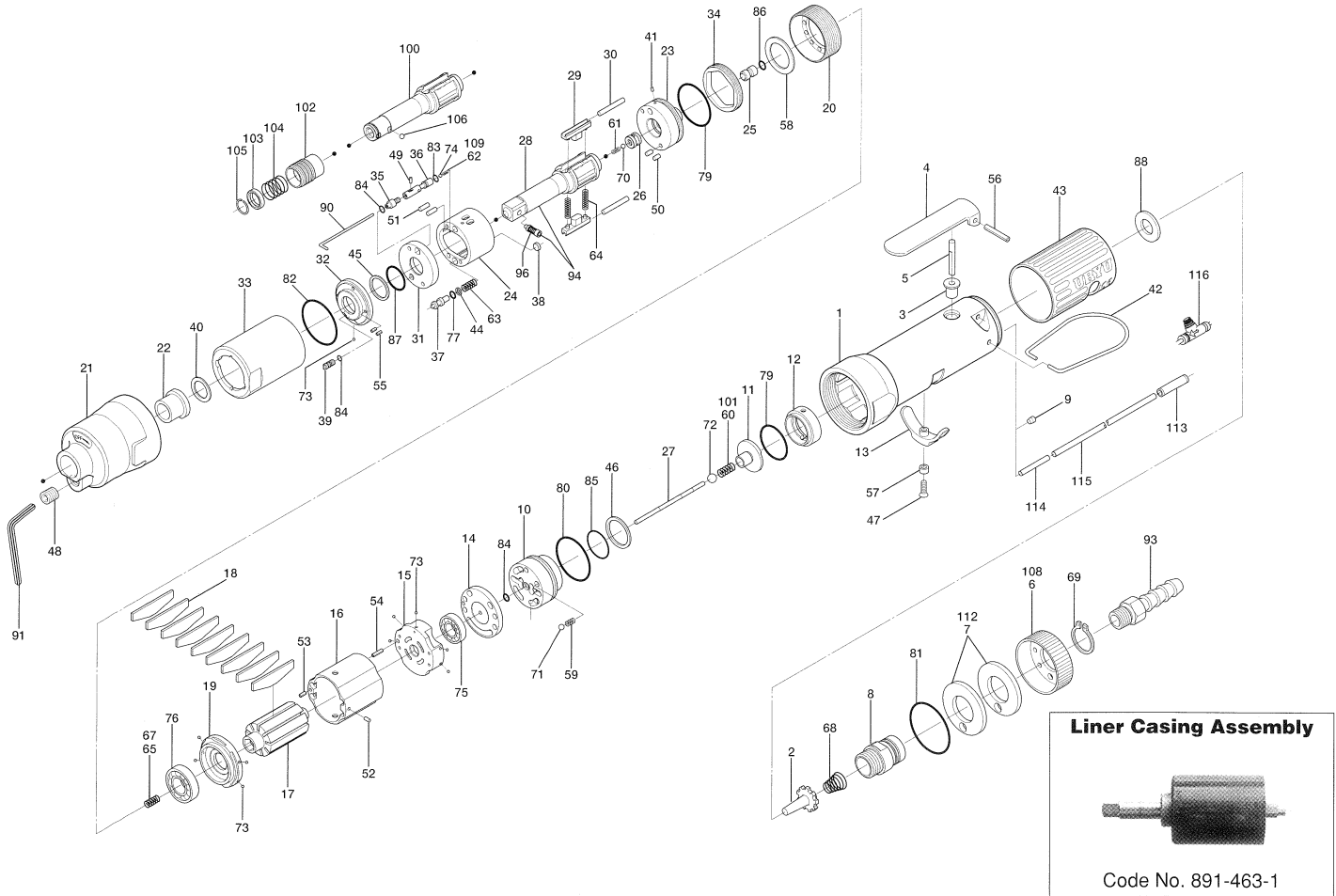


# ULT60S SERIES OIL-PULSE WRENCHES

## EXPLODED VIEW



## PARTS LIST

| Index No. | Code No.  | Parts Name              | Quantity | Index No. | Code No.  | Parts Name                         | Quantity | Index No.                          | Code No.  | Parts Name                   | Quantity |
|-----------|-----------|-------------------------|----------|-----------|-----------|------------------------------------|----------|------------------------------------|-----------|------------------------------|----------|
| # 1       | 129-025-2 | Casing                  | 1        | #40       | 145-327-6 | Anvil Front Spacer                 | 1        | #80                                | 990-331-0 | O-Ring(JW1530-21)            | 1        |
| # 2       | 259-100-0 | Valve                   | 1        | #41       | 150-064-5 | Plug                               | 1        | #81                                | 990-603-0 | O-Ring(28.5×1.3)             | 1        |
| # 3       | 161-103-3 | Valve Rod Bushing       | 1        | #42       | 191-790-1 | Suspension Ring                    | 1        | #82                                | 990-605-0 | O-Ring(25×1.45)              | 1        |
| # 4       | 196-107-7 | Valve Lever             | 1        | #43       | 129-842-3 | Casing Cover(Red)                  | 1        | #83                                | 990-621-0 | O-Ring(3.8×1.8×1.0)          | 1        |
| # 5       | 128-104-8 | Valve Rod               | 1        | #44       | 944-002-0 | Supporting Ring(2.6×4.5×1)         | 1        | #84                                | 990-900-0 | O-Ring(SNS-2)                | 3        |
| # 6       | 128-782-8 | Exhaust Cover(Red)      | 1        | #45       | 944-212-0 | Supporting Ring(12×16×1.5)         | 1        | #85                                | 990-914-0 | O-Ring(SNS-16)               | 1        |
| # 7       | 128-835-8 | Filter(K-200)           | 2        | #46       | 944-216-0 | Supporting Ring(14×20×1.85)        | 1        | #86                                | 990-305-0 | O-Ring(ARP568-003)KS         | 1        |
| # 8       | 128-091-8 | Air Inlet Bushing       | 1        | #47       | 948-426-0 | Allen Head Dog Point Screw (M3×12) | 1        | #87                                | 992-020-0 | SU-Ring(Q12/NTN)             | 1        |
| # 9       | 147-064-6 | Filler                  | 1        | #48       | 966-099-0 | Allen Head Plug(NPT1/16) GDL       | 1        | #88                                | 996-424-0 | Urethane Packing(16×9×2)     | 1        |
| #10       | 129-253-2 | Shut-Off Valve Bushing  | 1        | #49       | 970-013-0 | Pin(H)(1.5×4)                      | 1        | #94                                | 891-552-1 | Anvil Assembly(OP-P)         | 1        |
| #11       | 145-254-6 | Shut-Off Valve          | 1        | #50       | 970-130-0 | Pin(H)(2.45×4.5)                   | 2        | #96                                | 891-300-1 | Socket Pin Assembly          | 1        |
| #12       | 129-684-2 | Bumper Spacer           | 1        | #51       | 970-131-0 | Pin(H)(2.45×9.5)                   | 2        | <b>Parts for ULT60SD</b>           |           |                              |          |
| #13       | 161-212-3 | Reverse Lever           | 1        | #52       | 971-102-0 | Pin(2×3.8)                         | 1        | #100                               | 145-350-7 | Driver Anvil                 | 1        |
| #14       | 128-291-8 | Rear Plate Spacer       | 1        | #53       | 973-008-0 | Roll Pin(2×8)                      | 1        | #102                               | 011-351-1 | Bit Sleeve(1/8)              | 1        |
| #15       | 129-285-2 | Rear Plate              | 1        | #54       | 973-018-0 | Roll Pin(1.5×5)                    | 1        | #103                               | 011-352-1 | Bit Spacer                   | 1        |
| #16       | 129-286-2 | Cylinder                | 1        | #55       | 973-040-0 | Roll Pin(3×22)                     | 2        | #104                               | 976-327-0 | Spring(13.5×11×0.9)          | 1        |
| #17       | 145-287-6 | Rotor                   | 1        | #56       | 973-122-0 | Roll Pin(3×22)                     | 1        | #105                               | 978-117-0 | Snap Ring(11.7×1)            | 1        |
| #18       | 147-288-2 | Blade(PC)               | 9        | #57       | 975-004-0 | Spacer(5.5×3.1×2.7)                | 1        | #106                               | 981-002-0 | Ball(1/8)                    | 1        |
| #19       | 128-289-8 | Front Plate             | 1        | #58       | 975-752-0 | Adjusting Spacer(15×10×1)          | 1        | <b>Parts for ULT60SL &amp; DSL</b> |           |                              |          |
| #20       | 147-036-2 | Hammer Casing Connector | 1        | #59       | 976-006-0 | Spring(3×5×0.4)                    | 1        | #108                               | 129-782-0 | Exhaust Cover(Blue)          | 1        |
| #21       | 145-439-7 | Front Casing            | 1        | #60       | 977-045-0 | Cone Spring(4×4.6×9)(0.45)         | 1        | #109                               | 976-604-0 | Spring(2.9×7.1)(0.45)        | 1        |
| #22       | 190-328-6 | Anvil Bushing           | 1        | #61       | 976-653-0 | Spring(2.4×5×0.26)                 | 1        | <b>Parts for ULT60SL</b>           |           |                              |          |
| #23       | 145-901-6 | Rear Liner Plate        | 1        | #62       | 976-603-0 | Spring(2.8×7)(0.45)                | 1        | #101                               | 976-687-0 | Spring(4.3×10)(0.45)         | 1        |
| #24       | 145-902-6 | Liner                   | 1        | #63       | 976-665-0 | Spring(4.3×19×0.55)                | 1        | <b>Parts for TM-Type</b>           |           |                              |          |
| #25       | 145-546-6 | Piston                  | 1        | #64       | 976-792-0 | Spring(3.5×21×0.45)WPC             | 2        | #112                               | 851-053-1 | Filter(K200)                 | 2        |
| #26       | 145-929-6 | Check Valve Cover       | 1        | #65       | 976-650-0 | Spring(3.3×16×0.45)Standard        | 1        | #113                               | 909-442-0 | Quick Exhaust(AQF240F-04-00) | 1        |
| #27       | 129-130-2 | Operating Rod(2.1×64.7) | 1        | #66       | 976-662-0 | Spring(3.3×18)(0.45)Strong(Yellow) | 1        | #114                               | 935-240-0 | Nylon Tube(18NY)             | 1        |
| #28       | 145-319-6 | Anvil                   | 1        | #67       | 977-227-0 | Cone Spring(9×12×25×0.8)           | 1        | #115                               | 935-350-0 | Polyurethane Hose(F-1504)    | 1        |
| #29       | 145-440-6 | Driving Blade           | 2        | #68       | 979-358-0 | Snap Ring(ISTW-17)                 | 1        | <b>ACCESSORIES</b>                 |           |                              |          |
| #30       | 145-974-6 | Roller Pin(2.5×26)      | 2        | #70       | 981-001-0 | Ball(3/32)                         | 10       | #90                                | 939-091-0 | Allen Wrench(1.5mm)          | 1        |
| #31       | 145-973-6 | Liner Casing Spacer     | 1        | #71       | 981-002-0 | Ball(1/8)                          | 1        | #91                                | 939-105-0 | Allen Wrench(4)              | 1        |
| #32       | 145-904-6 | Front Liner Plate       | 1        | #72       | 981-003-0 | Ball(5/32)                         | 1        | #92                                | 940-114-0 | Air Hose Nipple(NPT1/4×3/8)  | 1        |
| #33       | 145-905-6 | Liner Casing            | 1        | #73       | 981-045-0 | Ball(1.5mm)                        | 1        | #116                               | 909-449-0 | Speed Controller(AS1001F-04) | 1        |
| #34       | 145-906-6 | Liner Casing Cover      | 1        | #74       | 144-270-0 | Pressure Regulator Valve           | 1        |                                    |           |                              |          |
| #35       | 145-907-6 | Relief Valve Spindle    | 1        | #75       | 982-014-0 | Ball Bearing(607)                  | 1        |                                    |           |                              |          |
| #36       | 145-970-7 | Relief Valve            | 1        | #76       | 982-902-0 | Ball Bearing(6901)                 | 1        |                                    |           |                              |          |
| #37       | 145-972-6 | Accumulator             | 1        | #77       | 990-320-0 | O-Ring(ARP-568-003)                | 1        |                                    |           |                              |          |
| #38       | 145-908-7 | Accumulator Cover       | 1        | #79       | 990-329-0 | O-Ring(JW1530-19)                  | 2        |                                    |           |                              |          |
| #39       | 194-742-0 | Oil Plug                | 1        |           |           |                                    |          |                                    |           |                              |          |

When ordering spare parts, please Specify tool type, code number and parts name.

Printed in Japan



**URYU SEISAKU, LTD.** Osaka, Japan