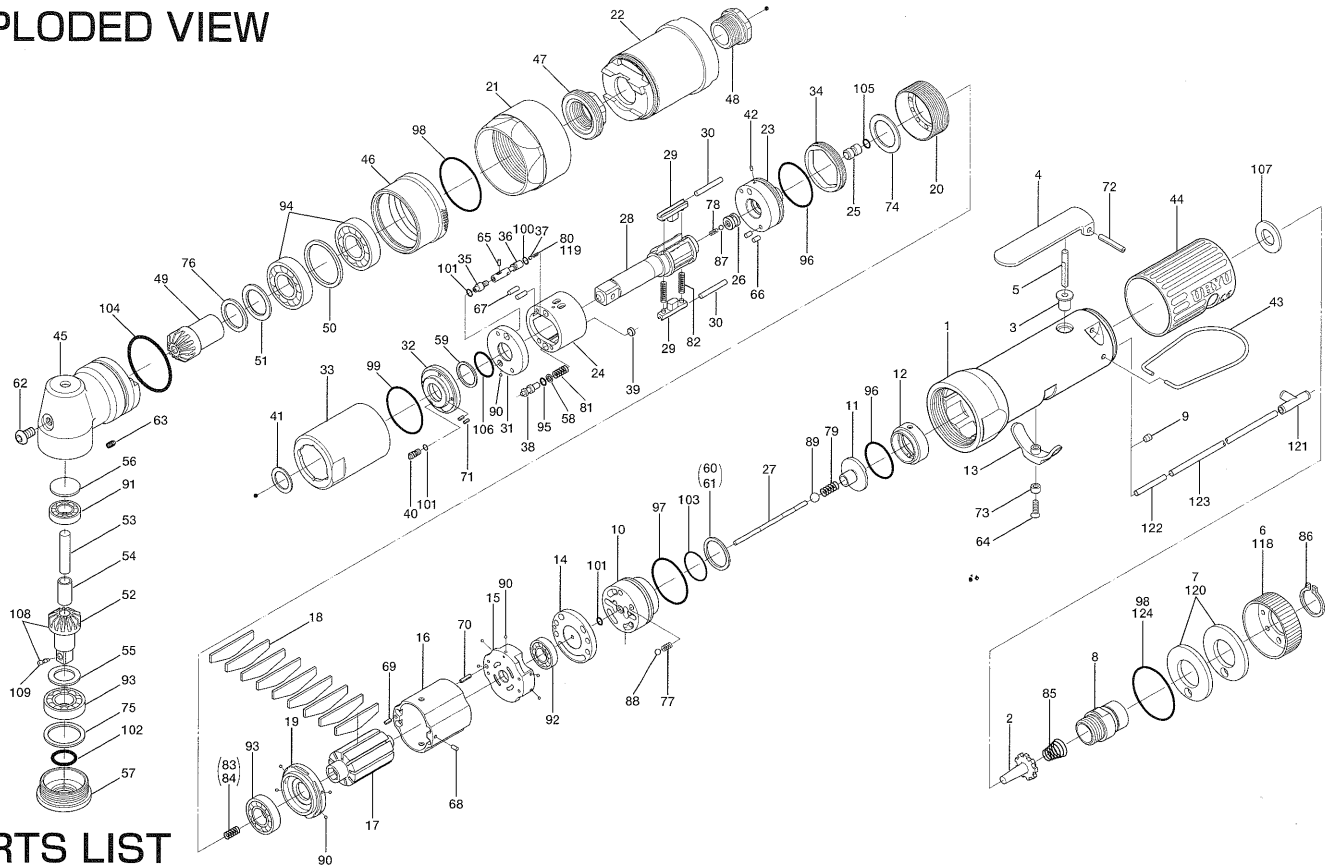


# ULT60C SERIES OIL-PULSE WRENCHES

## EXPLODED VIEW



## PARTS LIST

Index No.	Code No.	Parts Name	Quantity	Index No.	Code No.	Parts Name	Quantity	Index No.	Code No.	Parts Name	Quantity
# 1	127-025-5	Casing	1	#44	129-842-3	Handle Cover	1	#85	977-227-0	Cone Spring(9×12×25)	1
# 2	259-100-0	Valve	1	#45	127-441-3	Angle Casing	1	#86	979-358-0	Inner Snap Ring(ISTW-17)	1
# 3	161-103-3	Valve Rod Bushing	1	#46	127-382-3	Hammer Casing Nut	1	#87	981-001-0	Ball(3/32)	1
# 4	196-107-7	Valve Lever	1	#47	127-797-3	Ball Bearing Setting Spindle	1	#88	981-002-0	Ball(1/8)	1
# 5	128-104-8	Valve Rod	1	#48	127-799-3	Ball Bearing Setting Spindle Nut	1	#89	981-003-0	Ball(5/32)	1
# 6	128-782-8	Exhaust Cover	1	#49	127-420-3	Driving Gear	1	#90	981-045-0	Ball(1.5mm)	10
# 7	128-835-8	Filter(K200)	2	#50	179-423-3	Driving Gear Bushing Spacer	1	#91	982-013-0	Ball Bearing(606)	1
# 8	128-091-8	Air Inlet Bushing	1	#51	179-425-3	Driving Gear Spacer	1	#92	982-014-0	Ball Bearing(607)	1
# 9	147-064-6	Filler	1	#52	008-430-1	Driven Gear(O)	1	#93	982-902-0	Ball Bearing(6901)	2
#10	129-253-2	Shut-Off Valve Bushing	1	#53	008-431-1	Driven Gear Spindle	1	#94	982-903-0	Ball Bearing(6902)	2
#11	145-254-6	Shut-Off Valve	1	#54	008-432-1	Driven Gear Spindle Collar	1	#95	990-320-0	O-Ring(ARP568-003)	1
#12	129-684-2	Bumper Spacer	1	#55	008-433-1	Driving Gear Spacer	1	#96	990-329-0	O-Ring(JW1530-19)	2
#13	161-212-3	Reverse Lever	1	#56	179-391-5	Spindle Upper Plate	1	#97	990-331-0	O-Ring(JW1530-21)	1
#14	128-291-8	Rear Plate Spacer	1	#57	179-488-3	Angle Casing Setter	1	#98	990-603-0	O-Ring(28.5×1.3)	2
#15	129-285-2	Rear Plate	1	#58	944-002-0	Supporting Ring(2.6×4.5×1)	1	#99	990-605-0	O-Ring(25×1.45)	1
#16	129-286-2	Cylinder	1	#59	944-212-0	Supporting Ring(12×16×1.5)	1	#100	990-621-0	O-Ring(3.8×1.8×1.0)	1
#17	145-287-6	Rotor	1	#60	944-216-0	Supporting Ring(14×20×1.85)	1	#101	990-900-0	O-Ring(SNS-2)	3
#18	147-288-2	Blade(PC)	9	#61	944-218-0	Supporting Ring(14×20×1.9)	1	#102	990-910-0	O-Ring(SNS-12.5)	1
#19	128-289-8	Front Plate	1	#62	945-949-0	Hexagon Round Head Bolt(M5×6)	1	#103	990-914-0	O-Ring(SNS-16)	1
#20	127-036-3	Hammer Casing Connector	1	#63	954-105-0	Allen Head Cone Point Screw(M4×5)	1	#104	990-915-0	O-Ring(SNS-29)	1
#21	127-081-3	Connecting Nut	1	#64	948-426-0	Allen Flush Head Screw(M3×12)	1	#105	990-305-0	O-Ring(ARP568-003)(KS)	1
#22	127-439-5	Front Casing	1	#65	970-013-0	Pin(H)(1.5×4)	1	#106	992-020-0	SU-Ring(Q12)(NTN)	1
#23	145-901-6	Rear Liner Plate	1	#66	970-130-0	Pin(H)(2.45×4.5)	1	#107	996-424-0	Packing(16×9×2)	1
#24	145-902-6	Liner	1	#67	970-131-0	Pin(H)(2.45×9.5)	2	#108	891-345-1	Driven Gear Assembly(P)	1
#25	145-546-6	Piston	1	#68	971-102-0	Pin(2×3.8)	1	#109	891-300-1	Socket Pin Assembly	1
#26	145-929-6	Check Valve Cover	1	#69	973-008-0	Roll Pin(2×8)	1	<b>Parts for ULT60CL</b>			
#27	129-130-2	Operation Rod(2.1×64.7)	1	#70	973-018-0	Roll Pin(2×18)	1	#118	129-782-0	Exhaust Cover	1
#28	145-319-6	Anvil	1	#71	973-040-0	Roll Pin(1.5×5)	2	#119	976-676-0	Spring(2.7×7.4)(0.4)	1
#29	145-440-6	Driving Blade	2	#72	973-122-0	Roll Pin(3×22)	1	<b>Parts for TM-Type</b>			
#30	145-974-6	Roller(2.5×26)	2	#73	975-004-0	Spacer(5.5×3.1×2.7)	1	#120	851-053-1	Filter(K200)	2
#31	145-973-6	Liner Casing Spacer	1	#74	975-752-0	Adjusting Spacer(15×10×1)	1	#121	909-442-0	Quick Exhaust(AQ240F-04-00)	1
#32	145-904-6	Front Liner Plate	1	#75	975-806-0	Adjusting Spacer(24×20×1)	1	#122	935-240-0	Nylon Tube(18N)	1
#33	145-905-6	Liner Casing	1	#76	975-807-0	Adjusting Spacer(28×25×1)	1	#123	935-350-0	Polyurethane Hose(F1504)	1
#34	145-906-6	Liner Casing Setter	1	#77	975-006-0	Spring(3×5)(0.4)	1	#124	990-333-0	O-Ring(JW1530-23)	1
#35	145-907-6	Relief Valve Spindle	1	#78	976-653-0	Spring(2.4×5)(0.26)	1	<b>ACCESSORIES</b>			
#36	145-970-7	Relief Valve	1	#79	976-687-0	Spring(4.3×10)(0.45)	1	#125	939-091-0	Allen Wrench(1.5mm)	1
#37	144-270-0	Pressure Regulator Valve	1	#80	976-832-0	Spring(2.8×7.2)(0.45)	1	#126	909-449-0	Speed Controller(AS1001F-04)	1
#38	145-972-6	Accumulator	1	#81	976-665-0	Spring(4.3×19)(0.55)	1				
#39	145-908-7	Accumulator Cover	1	#82	976-792-0	Spring(3.5×21)(0.45)WPC	2				
#40	194-742-0	Oil Plug	1	#83	976-650-0	Spring(3.3×16)(0.45)	1				
#41	145-327-6	Anvil Front Spacer	1	#84	976-662-0	Spring(Yellow)(3.3×18)(0.45)	1				
#42	150-064-5	Plug	1								
#43	191-790-1	Suspension Ring	1								

When ordering spare parts, please Specify tool type, code number and part name.

Printed Japan



**URYU SEISAKU, LTD.** Osaka Japan

For further information, please contact at any time your nearest URYU distributor.

OKA-520-06-11-01-2001