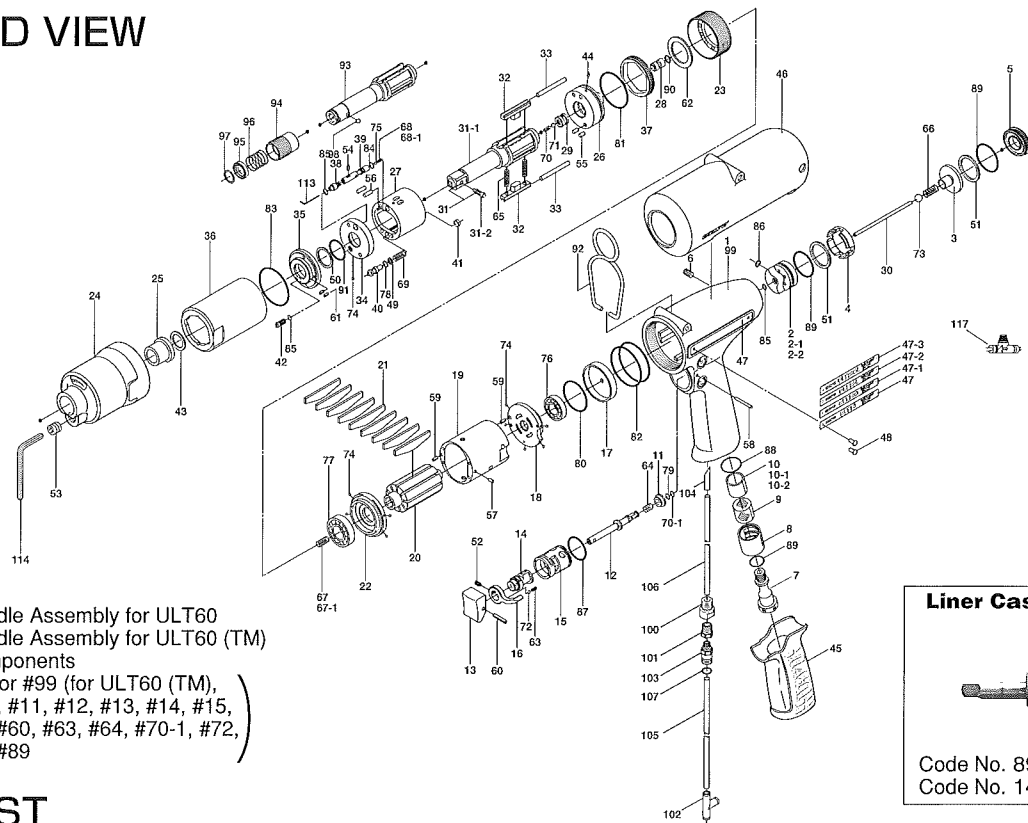


ULT60 SERIES OIL-PULSE WRENCHES

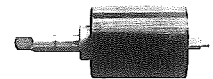
EXPLODED VIEW



145-984-6 Handle Assembly for ULT60
852-511-1 Handle Assembly for ULT60 (TM)
Components

(#1 (for ULT60) or #99 (for ULT60 (TM)),
#7, #8, #9, #10, #11, #12, #13, #14, #15,
#16, #52, #58, #60, #63, #64, #70-1, #72,
#79, #87, #88, #89

Liner Casing Assembly



Code No. 891-463-1 for ULT60
Code No. 145-911-7 for ULT60D

PARTS LIST

Index No.	Code No.	Parts Name	Quantity	Index No.	Code No.	Parts Name	Quantity	Index No.	Code No.	Parts Name	Quantity
# 1	145-025-6	○ Handle	1	#41	145-908-7	Accumulator Cover	1	#78	990-320-0	○ Ring (ARP568-003)	1
# 2	145-253-6	Shut-off Valve Bushing (60/60D)	1	#42	194-742-0	Oil Plug	1	#79	990-306-0	○ Ring (ARP568-004)(H)	1
# 2-1	145-253-8	Shut-off Valve Bushing (60L)	1	#43	145-327-6	Anvil Front Spacer	1	#80	990-327-0	○ Ring (JW1530-18)	1
# 2-2	145-253-9	Shut-off Valve Bushing (60DL)	1	#44	150-064-5	Plug	1	#81	990-329-0	○ Ring (JW1530-19)	1
# 3	145-254-6	Shut-off Valve	1	#45	147-842-2	Handle Cover	1	#82	990-337-0	○ Ring (JW1530-27)	2
# 4	145-684-6	Cushion Spacer	1	#46	145-840-8	Casing Cover	1	#83	990-605-0	○ Ring (25×1.45)	1
# 5	145-019-6	Valve Cover	1	#47	145-924-6	Name Plate (ULT60)	1	#84	990-621-0	○ Ring (3.8×1.8×1.0)	1
# 6	150-108-5	Valve Plug	1	#47-1	145-924-7	Name Plate (ULT60D)	1	#85	990-900-0	○ Ring (SNS-2)	3
# 7	147-091-2	○ Air Inlet Bushing	1	#47-2	145-924-8	Name Plate (ULT60L)	1	#86	990-901-0	○ Ring (SNS-3)	1
# 8	147-780-3	○ Exhaust Stack	1	#47-3	145-924-9	Name Plate (ULT60DL)	1	#87	990-912-0	○ Ring (SNS-14)	1
# 9	147-042-2	○ Silencer	1	#48	930-205-0	Pin (No.0 × 2.6)	2	#88	990-914-0	○ Ring (SNS-16)	1
#10	145-835-6	○ Filter (K50) (ULT60/60D)	1	#49	944-002-0	Support Ring (2.6×4.5×1)	1	#89	990-916-0	○ Ring (SNS-18)	3
#10-1	145-835-8	Filter (K100) (ULT60L/60DL)	1	#50	944-212-0	Support Ring (12×16×1.5)	1	#90	990-305-0	○ Ring (ARP568-003)	1
#11	147-100-3	○ Valve	1	#51	944-217-0	Support Ring (14×20×1.8)	2	#91	992-020-0	SU-Ring (Q12)	1
#12	142-104-6	○ Valve Rod	1	#52	952-106-0	○ Allen Head Dog Point Screw (M4×6)	1	#92	174-790-0	Suspension Ring	1
#13	147-107-2	○ Valve Lever	1	#53	966-099-0	Allen Head Plug (NPT1/16)	1	Parts for ULT60D & 60DL			
#14	147-210-2	○ Reverse Valve	1	#54	970-013-0	Pin (H) (1.5×4)	1	#93	145-350-7	Driver Anvil	1
#15	147-211-2	○ Reverse Valve Bushing	1	#55	970-130-0	Pin (H) (2.45×4.5)	2	#94	011-351-1	Bit Sleeve (1/8)	1
#16	480-212-8	○ Reverse Lever	1	#56	970-131-0	Pin (H) (2.45×9.5)	2	#95	011-352-1	Bit Spacer	1
#17	145-291-7	Rear Plate Spacer	1	#57	971-102-0	Pin (2.4×3.8)	1	#96	976-327-0	Spring (13.5×11)	1
#18	145-285-6	Rear Plate	1	#58	971-123-0	○ Roll Pin (2×23)	1	#97	978-117-0	Snap Ring (11.7×1)	1
#19	145-286-6	Cylinder	1	#59	973-008-0	Roll Pin (2×8)	2	#98	981-002-0	Ball (1/8)	1
#20	145-287-6	Rotor	1	#60	973-014-0	○ Roll Pin (2×14)	1	PARTS FOR (TM)-TYPE			
#21	147-288-2	Blade (PC)	9	#61	973-040-0	Roll Pin (1.5×5)	2	#99	852-502-1	○ Handle	1
#22	145-289-6	Front Plate	1	#62	975-752-0	Adjusting Spacer (15×10×1)	1	#100	851-967-1	Plug	1
#23	147-036-2	Hammer Casing Connector	1	#63	976-006-0	○ Spring (3×5)	1	#101	851-955-1	Connecting Screw	1
#24	145-439-7	Front Casing	1	#64	976-457-0	○ Spring (7×12)	1	#102	909-442-0	Quick Exhaust (AQ240F-04-00)	1
#25	190-328-6	Anvil Bushing	1	#65	976-792-0	○ Spring (3.5×21) WPC	2	#103	933-281-0	One-Touch Connector (KJH04-M5)	1
#26	145-901-6	Rear Liner Plate	1	#66	977-056-0	Cone Spring (4.1×4.7×9.4)	1	#104	935-240-0	Nylon Tube (18NY)	1
#27	145-902-6	Liner	1	#67	976-650-0	Spring (3.3×16) [Standard]	1	#105	935-350-0	Polyurethane Hose (F-1504)	1
#28	145-546-6	Piston	1	#67-1	976-662-0	Spring (3.3×18) [Strong]	1	#106	935-358-0	Polyurethane Hose (TU-0212)	1
#29	145-929-6	Check Valve Cover	1	#68	976-636-0	Spring (2.8×7.4) (ULT60/60L)	1	#107	990-320-0	○ Ring (ARP568-003)	1
#30	145-130-6	Operating Rod (2.1×56.9)	1	#68-1	976-631-0	Spring (2.8×7.5) (ULT60D/60DL)	1	ACCESSORIES			
#31	891-552-1	Anvil CP (P)	1	#69	976-665-0	Spring (4.3×19)	1	#113	939-091-0	Allen Wrench (1.5)	1
#31-1	145-319-6	Anvil	1	#70	976-653-0	Spring (2.4×5)	1	#114	939-105-0	Allen Wrench (4)	1
#31-2	891-300-1	Socket Pin Assembly	1	#70-1	979-405-0	○ Outer Snap Ring (E2.5)	1	#115	940-114-0	Air Hose Nipple (NPT 1/4×3/8)	1
#32	145-440-6	Driving Blade	2	#71	981-001-0	Ball (3/32)	1	#116	916-810-0	Double Bit (No.2×75) (ULT60D/60DL)	1
#33	145-974-6	Roller Pin (2.5×26)	2	#72	981-002-0	○ Ball (1/8)	1	#117	909-449-0	Speed Controller	1
#34	145-973-6	Liner Casing Spacer	1	#73	981-003-0	Ball (5/32)	1				
#35	145-904-6	Front Liner Plate	1	#74	981-045-0	Ball (1.5mm)	10				
#36	145-905-6	Liner Casing	1	#75	144-270-0	Pressure Regulator Valve	1				
#37	145-906-6	Liner Casing Cover	1	#76	982-014-0	Ball Bearing (607)	1				
#38	145-907-6	Relief Valve Spindle	1	#77	982-902-0	Ball Bearing (6901)	1				
#39	145-970-7	Relief Valve	1								
#40	145-972-6	Accumulator	1								

When ordering spare parts, please specify tool type, code number and part name.

Printed Japan



URYU SEISAKU, LTD. Osaka Japan

For further information, please contact at any time your nearest URYU distributor.

OKA-472-11-11-08-1511