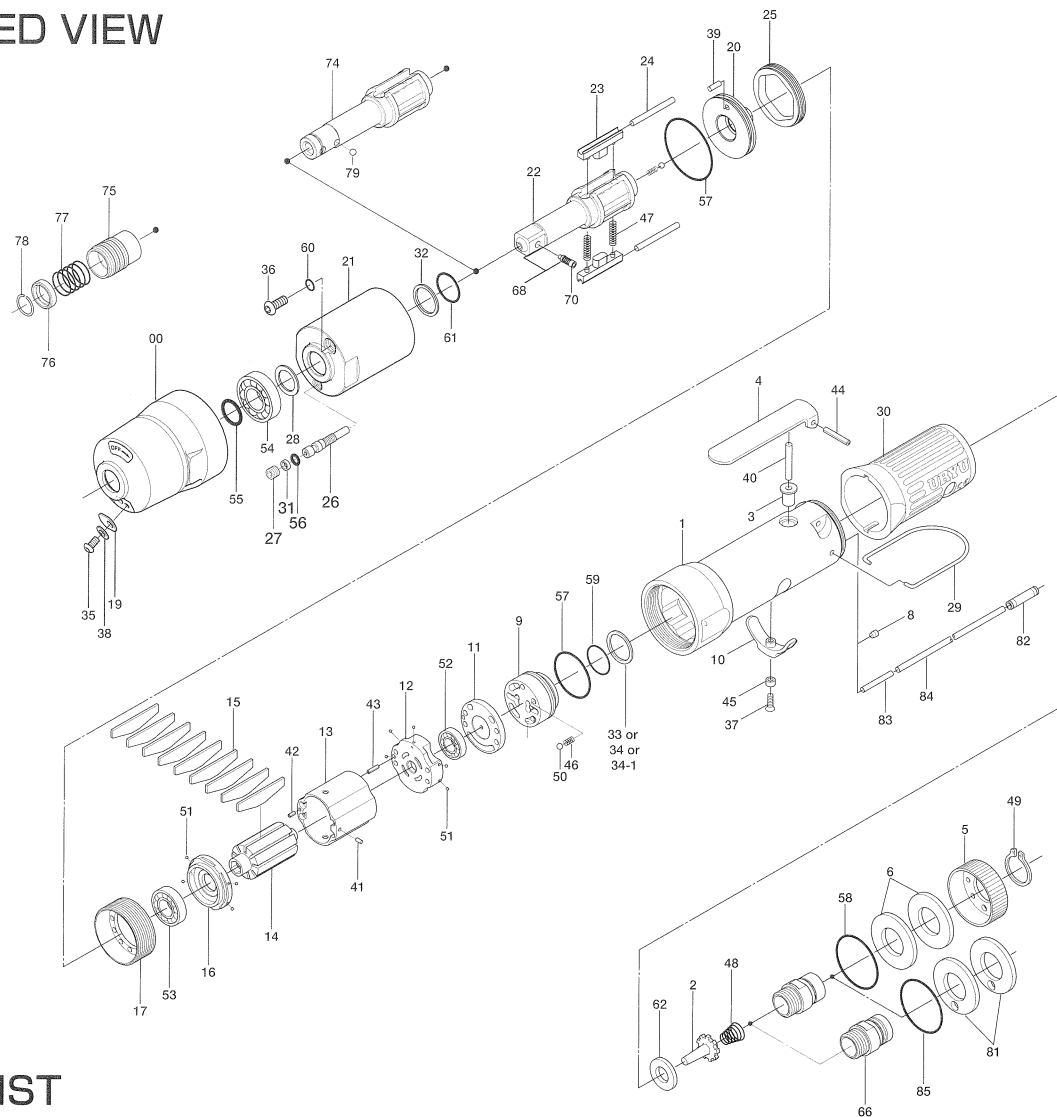


UL60S SERIES OIL-PULSE WRENCH

EXPLODED VIEW



PARTS LIST

Index No.	Code No.	Parts Name	Quantity	Index No.	Code No.	Parts Name	Quantity	Index No.	Code No.	Parts Name	Quantity
# 1	107-025-2	Casing	1	#32	944-212-0	Supporting Ring (12×16×1.5)	1	#59	990-912-0	O-Ring (SNS-14)	1
# 2	259-100-0	Valve	1	#33	944-216-0	Supporting Ring (14×20×1.85)	1	#60	990-971-0	O-Ring (SNS-3)(NOK)	1
# 3	161-103-3	Valve Rod Bushing	1	#34	944-218-0	Supporting Ring (14×20×1.9)	1	#61	992-020-0	SU-Ring (Q12)(NTN)	1
# 4	196-107-7	Valve Lever	1	#34-1	944-232-0	Supporting Ring (14×20×1.95)	1	#62	996-424-0	Packing (16×9×2)	1
# 5	128-782-8	Exhaust Cover	1	#35	945-935-0	Hexagon Round Head Bolt (M3×6)	1	#68	891-561-1	Socket Spindle Assembly (P)	1
# 6	128-835-8	Filter(K200)	2	#36	945-942-0	Hexagon Round Head Bolt (M4×6)	1	#70	891-300-1	Socket Snap Pin	1
#66	128-091-8	Air Inlet Bushing	1	#37	948-426-0	Allen Flush Head Screw (M3×12)	1	PARTS FOR UL60SD			
# 8	147-064-6	Plug	1	#38	961-008-0	Flat Washer (3)	1	#74	143-350-7	Driver Anvil	1
# 9	106-210-8	Reverse Valve	1	#39	970-148-0	Pin (H) (2.5×3.8)	1	#75	011-351-1	Bit Sleeve (1/8)	1
#10	161-212-3	Reverse Lever	1	#40	970-221-0	Pin (H) (3×21.5)	1	#76	011-352-1	Bit Spacer	1
#11	128-291-8	Rear Plate Spacer	1	#41	971-102-0	Pin (2×3.8)	1	#77	976-327-0	Spring (13.5×11)(0.9)	1
#12	129-285-2	Rear Plate	1	#42	973-008-0	Roll Pin (2×8)	1	#78	978-117-0	Snap Ring (11.7×1)	1
#13	129-286-2	Cylinder	1	#43	973-018-0	Roll Pin (2×18)	1	#79	981-002-0	Ball (1/8)	1
#14	145-287-6	Rotor	1	#44	973-122-0	Roll Pin (2×22)	1	PARTS FOR (TM)-TYPE			
#15	147-288-2	Blade (PC)	9	#45	975-004-0	Spacer (5.5×3.1×2.7)	1	#81	851-053-1	Filter (K200)	2
#16	128-289-8	Front Plate	1	#46	976-006-0	Spring (3×5)(0.4)	1	#82	933-250-0	One-Touch Connector (SLS-04)	1
#17	147-036-2	Hammer Casing Connector	1	#47	976-788-0	Spring (3.5×25) (0.45) (WPC)	2	#83	935-240-0	Nylon Tube (18NY)	1
#18	107-439-2	Front Casing	1	#48	977-227-0	Cone Spring (9×12×25)(0.8)	1	#84	935-350-0	Polyurethane Hose (F-1504)	1
#19	143-243-8	Regulator Valve Cover	1	#49	979-358-0	Inner Snap Ring (ISTW-17)	1	#85	990-333-0	O-Ring (JW1530-23)	1
#20	143-901-6	Rear Liner Plate	1	#50	981-002-0	Ball (1/8)	1	ACCESSORIES			
#21	143-902-6	Liner	1	#51	981-045-0	Ball (1.5mm)	9	939-091-0	Allen Wrench 1.5(80×20)	1	
#22	143-319-6	Anvil	1	#52	982-014-0	Ball Bearing (607)	1	939-107-0	Allen Wrench 2	1	
#23	143-440-6	Driving Blade	2	#53	982-902-0	Ball Bearing (6901)	1	916-810-0	(+) Double Bit NO.2×75 (6.35H)	1	
#24	143-974-6	Roller (2.5×25)	2	#54	982-922-0	Ball Bearing (6901ZZ)	1				
#25	143-906-3	Liner Casing Cover	1	#55	990-012-0	O-Ring (P12.5)	1				
#26	143-970-6	Relief Valve	1	#56	990-320-0	O-Ring (ARP568-003)	1				
#27	136-969-7	Relief Valve Cover	1	#57	990-331-0	O-Ring (JW1530-21)	2				
#28	178-327-9	Anvil Front Spacer	1	#58	990-603-0	O-Ring (28.5×1.3)	1				
#29	191-790-1	Suspension Bail	1								
#30	129-842-3	Handle Cover	1								
#31	944-002-0	Supporting Ring (2.6×4.5×1)	1								

When ordering spare parts, please Specify tool type, code number and parts name.

Printed in Japan



URYU SEISAKU, LTD. Osaka, Japan

For further information, please contact at any time your nearest URYU distributor.

OKA-518-07-09-28-501