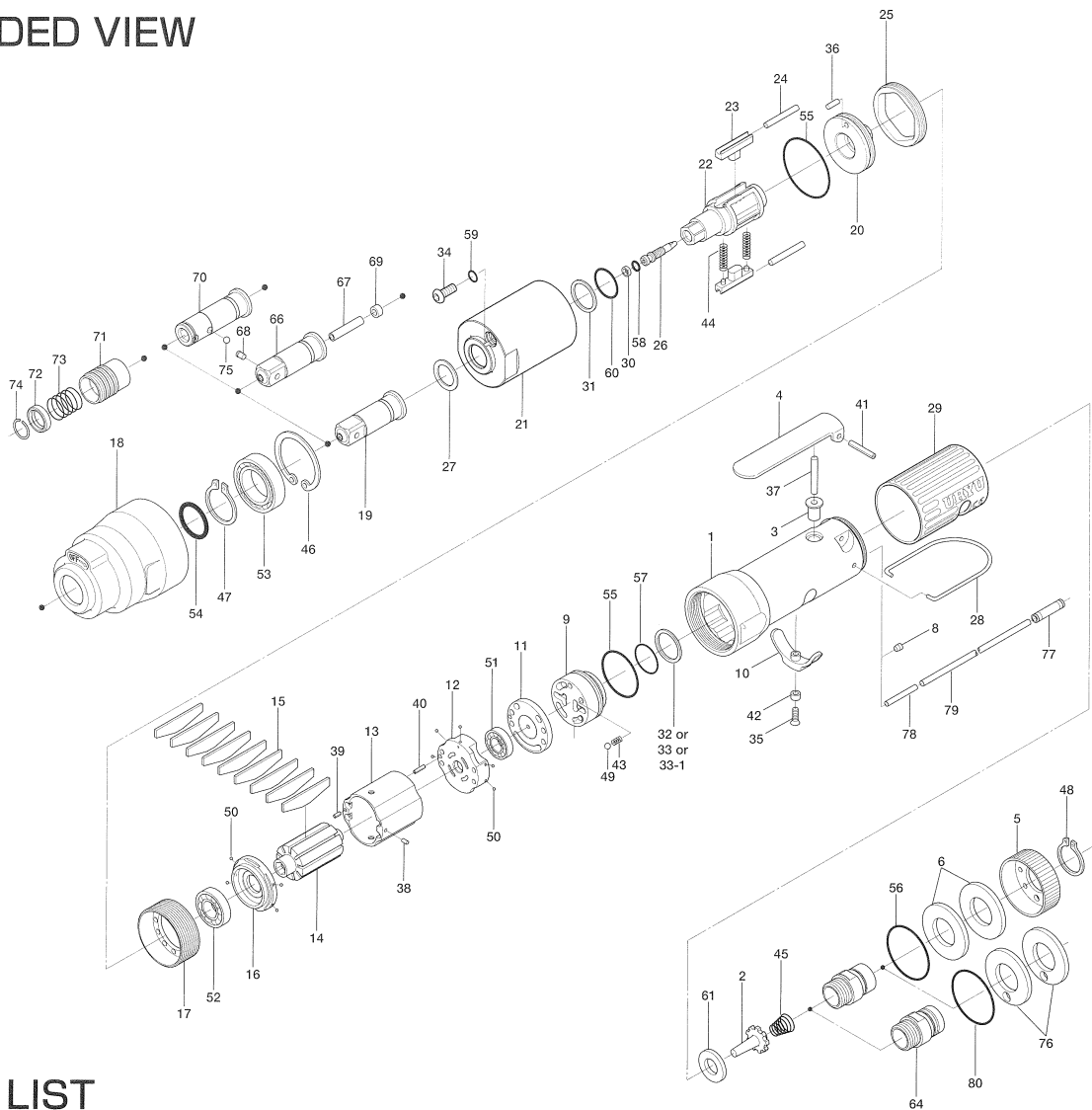


UL50S SERIES OIL-PULSE WRENCH

EXPLODED VIEW



PARTS LIST

Index No.	Code No.	Parts Name	Quantity	Index No.	Code No.	Parts Name	Quantity	Index No.	Code No.	Parts Name	Quantity
# 1	106-025-8	Casing	1	#31	944-212-0	Supporting Ring (12×16×1.5)	1	#58	990-970-0	O-Ring (SNS-2)(NOK)	1
# 2	259-100-0	Valve	1	#32	944-216-0	Supporting Ring (14×20×1.85)	1	#59	990-971-0	O-Ring (SNS-3)(NOK)	1
# 3	161-103-3	Valve Rod Bushing	1	#33	944-218-0	Supporting Ring (14×20×1.9)	1	#60	992-020-0	SU-Ring (Q12)(NTN)	1
# 4	196-107-7	Valve Lever	1	#33-1	944-232-0	Supporting Ring (14×20×1.95)	1	#61	996-424-0	Packing (16×9×2)	1
# 5	128-782-8	Exhaust Cover	1	#34	945-942-0	Hexagon Round Head Bolt (M4×6)	1	#66	891-558-1	Socket Spindle Assembly (P)	1
# 6	128-835-8	Filter (K200)	2	#35	948-426-0	Allen Flush Head Screw (M3×12)	1	#67	891-559-1	Pipe	1
#64	128-091-8	Air Inlet Bushing	1	#36	970-148-0	Pin (H)(2.5×3.8)	1	#68	891-560-1	Socket Snap Pin	1
# 8	147-064-6	Plug	1	#37	970-221-0	Pin (H)(3×21.5)	1	#69	975-001-0	Spacer (6×2.8×3)	1
# 9	106-210-8	Reverse Valve	1	#38	971-102-0	Pin (2×3.8)	1	PARTS FOR UL50SD			
#10	161-212-3	Reverse Lver	1	#39	973-008-0	Roll Pin (2×8)	1	#70	158-350-6	Driver Anvil	1
#11	128-291-8	Rear Plate Spacer	1	#40	973-018-0	Roll Pin (2×18)	1	#71	011-351-1	Bit Sleeve (1/8)	1
#12	129-285-2	Rear Plate	1	#41	973-122-0	Roll Pin (3×22)	1	#72	011-352-1	Bit Spacer	1
#13	106-286-8	Cylinder	1	#42	975-004-0	Spacer (5.5×3.1×2.7)	1	#73	976-327-0	Spring (13.5×11)(0.9)	1
#14	143-287-3	Rotor	1	#43	976-006-0	Spring (3×5)(0.4)	1	#74	978-117-0	Snap Ring (11.7×1)	1
#15	143-288-3	Blade (PC)	9	#44	976-792-0	Spring (3.5×21)(0.45)(WPC)	2	#75	981-002-0	Ball (1/8)	1
#16	128-289-8	Front Plate	1	#45	977-227-0	Cone Spring (9×12×25)(0.8)	1	PARTS FOR (TM)-TYPE			
#17	147-036-2	Hammer Casing Connector	1	#46	979-327-0	Inner Snap Ring (IRTW-28)	1	#76	851-053-1	Filter (K200)	2
#18	143-439-3	Front Casing	1	#47	979-356-0	Inner Snap Ring (ISTW-15)	1	#77	933-250-0	One-Touch Connector (SLS-04)	1
#19	143-454-3	Socket Spindle (P)	1	#48	979-358-0	Inner Snap Ring (ISTW-17)	1	#78	935-240-0	Nylon Tube (18NY)	1
#20	143-901-3	Rear Liner Plate	1	#49	981-002-0	Ball (1/8)	1	#79	935-350-0	Polyurethane Hose (F-1504)	1
#21	143-902-3	Liner	1	#50	981-045-0	Ball (1.5mm)	9	#80	990-333-0	O-Ring (JW1530-23)	1
#22	143-319-3	Anvil	1	#51	982-014-0	Ball Bearing (607)	1	ACCESSORIES			
#23	143-440-3	Driving Blade	2	#52	982-902-0	Ball Bearing (6901)	1	939-090-0	Allen Wrench 1.5(55×55)	1	
#24	143-974-3	Roller (2.5×22)	2	#53	982-923-0	Ball Bearing (6902ZZ)	1	916-810-0	(+) Double Bit NO.2×75 (6.35H)	1	
#25	143-906-3	Liner Casing Cover	1	#54	990-156-0	O-Ring (P16)(NTN)	1				
#26	143-970-3	Relief Valve	1	#55	990-331-0	O-Ring (JW1530-21)	2				
#27	178-327-9	Anvil Front Spacer	1	#56	990-603-0	O-Ring (28.5×1.3)	1				
#28	191-790-1	Suspension Bail	1	#57	990-912-0	O-Ring (SNS-14)	1				
#29	128-842-8	Handle Cover	1								
#30	944-002-0	Supporting Ring (2.6×4.5×1)	1								

When ordering spare parts, please Specify tool type, code number and parts name.

Printed in Japan



URYU SEISAKU, LTD. Osaka, Japan

For further information, please contact at any time your nearest URYU distributor.

OKA-517-07-09-28-501