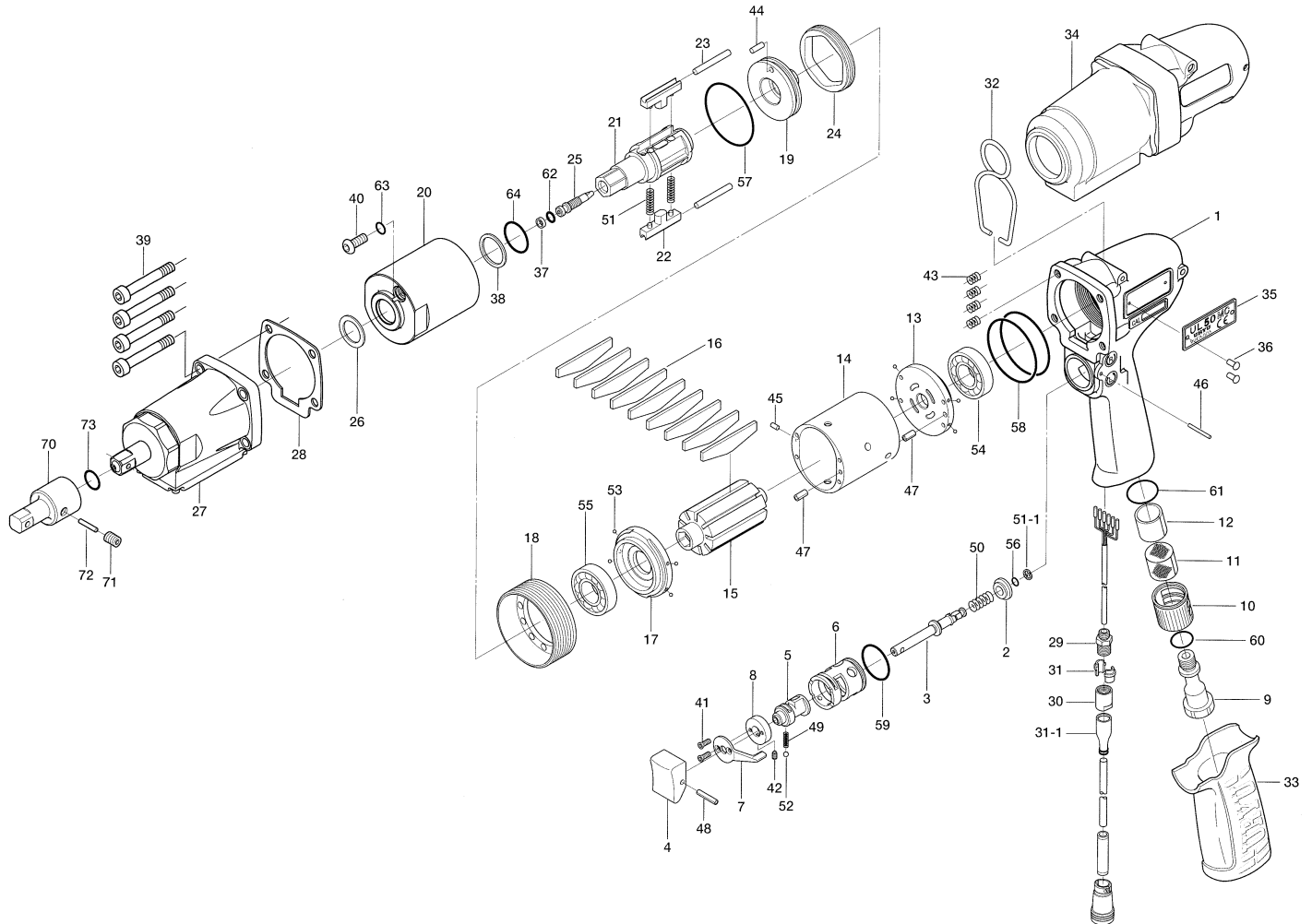


# UL50MC SERIES OIL-PULSE WRENCHES

## EXPLODED VIEW



## PARTS LIST

Index No.	Code No.	Parts Name	Quantity	Index No.	Code No.	Parts Name	Quantity	Index No.	Code No.	Parts Name	Quantity
# 1	851-356-1	Handle	1	#29	851-301-1	Connector	1	#54	982-014-0	Ball Bearing(607)	1
# 2	147-100-3	Valve	1	#30	851-302-1	Cap	1	#55	982-902-0	Ball Bearing(6901)	1
# 3	147-104-2	Valve Rod	1	#31	851-303-1	Retainer	2	#56	990-306-0	O-Ring(ARP-568-004)(H)	1
# 4	147-107-2	Valve Lever	1	#31-1	131-564-8	Retainer Cover	1	#57	990-331-0	O-Ring(JW1530-21)	1
# 5	851-306-1	Reverse Valve	1	#32	174-790-0	Suspension Bail	1	#58	990-337-0	O-Ring(JW1530-27)	2
# 6	851-359-1	Reverse Valve Bushing	1	#33	147-842-2	Handle Cover	1	#59	990-912-0	O-Ring(SNS-14)	1
# 7	173-212-0	Reverse Lever	1	#34	131-840-5	Casing Protector	1	#60	990-914-0	O-Ring(SNS-16)	1
# 8	851-307-1	Reverse Valve Spacer	1	#35	131-924-5	Name Plate	1	#61	990-916-0	O-Ring(SNS-18)	1
# 9	147-091-2	Air Inlet Bushing	1	#36	930-205-0	Driver Rivet(No.0×2.6)	2	#62	990-970-0	O-Ring(SNS-2)(NOK)	1
#10	147-780-3	Exhaust Stack	1	#37	944-002-0	Supporting Ring(2.6×4.5×1)	1	#63	990-971-0	O-Ring(SNS-3)(NOK)	1
#11	147-042-2	Silencer	1	#38	944-212-0	Supporting Ring(12×16×1.5)	1	#64	992-020-0	SU-Ring(Q12)(NOK)	1
#12	145-835-8	Filter(K-100)	1	#39	945-117-0	Allen Head Bolt(M5×16)	4	<b>Standard Accessories</b>			
#13	147-285-2	Rear Plate	1	#40	945-942-0	Hexagon Round Head Bolt(M4×6)	1	#68	939-090-0	Allen Wrench(1.5mm)	1
#14	143-286-3	Cylinder	1	#41	948-423-0	Allen Flush Head Screw(M3×6)	2	#69	940-114-0	Air Hose Nipple(NPT1/4×3/8)	1
#15	143-287-3	Rotor	1	#42	952-006-0	Allen Head Dog Point Screw (M3×6)	1	#70	904-090-0	Extension Bar(3/8×45)	1
#16	143-288-3	Blade(PC)	9	#43	965-011-0	Heli-Sert(M5×1.5D)	4	#71	953-104-0	Allen Head Flat Point Screw (M4×4)	1
#17	147-289-3	Front Plate	1	#44	970-145-0	Pin(H)(2.5×3.5)	1	#72	971-214-0	Pin(3×14)	1
#18	147-036-2	Hammer Casing Connector	1	#45	971-102-0	Pin(2×3.8)	1	#73	990-011-0	O-Ring(P12)	1
#19	143-901-3	Rear Liner Plate	1	#46	971-130-0	Pin(2×30)	1	<b>Accessories</b>			
#20	143-902-3	Liner	1	#47	973-008-0	Roll Pin(2×8)	2	#65	851-304-1	Joint Cable Assembly	1
#21	851-357-1	Anvil	1	#48	973-014-0	Roll Pin(2×14)	1	#66	909-921-0	Sensor Cable Assembly(3F5)	1
#22	143-440-3	Driving Blade	2	#49	976-006-0	Spring(3×5)(0.4)	1	#67	909-749-0	Solenoid Valve Assembly(VP542)	1
#23	143-974-3	Roller Pin(2.5×22)	2	#50	976-457-0	Spring(7×12)(0.9)	1	<b>Options</b>			
#24	143-906-3	Liner Casing Cover	1	#51	976-792-0	Spring(3.5×21)(0.45)WPC	2	#74	909-982-0	Valve Cable Assembly	1
#25	143-970-3	Relief Valve	1	#51-1	979-405-0	Outer Snap Ring(E2.5)	1				
#26	178-327-9	Anvil Front Spacer	1	#52	981-002-0	Ball(1/8)	1				
#27	149-975-4	Sensor Casing Assembly(S04S)	1	#53	981-045-0	Ball(1.5mm)	8				
#28	149-867-2	Front Casing Packing	1								

When ordering spare parts, please Specify tool type, code number and parts name.

Printed in Japan



**URYU SEISAKU, LTD.** Osaka, Japan

For further information, please contact at any time your nearest URYU distributor.

OKA-508-06-01-30-2001