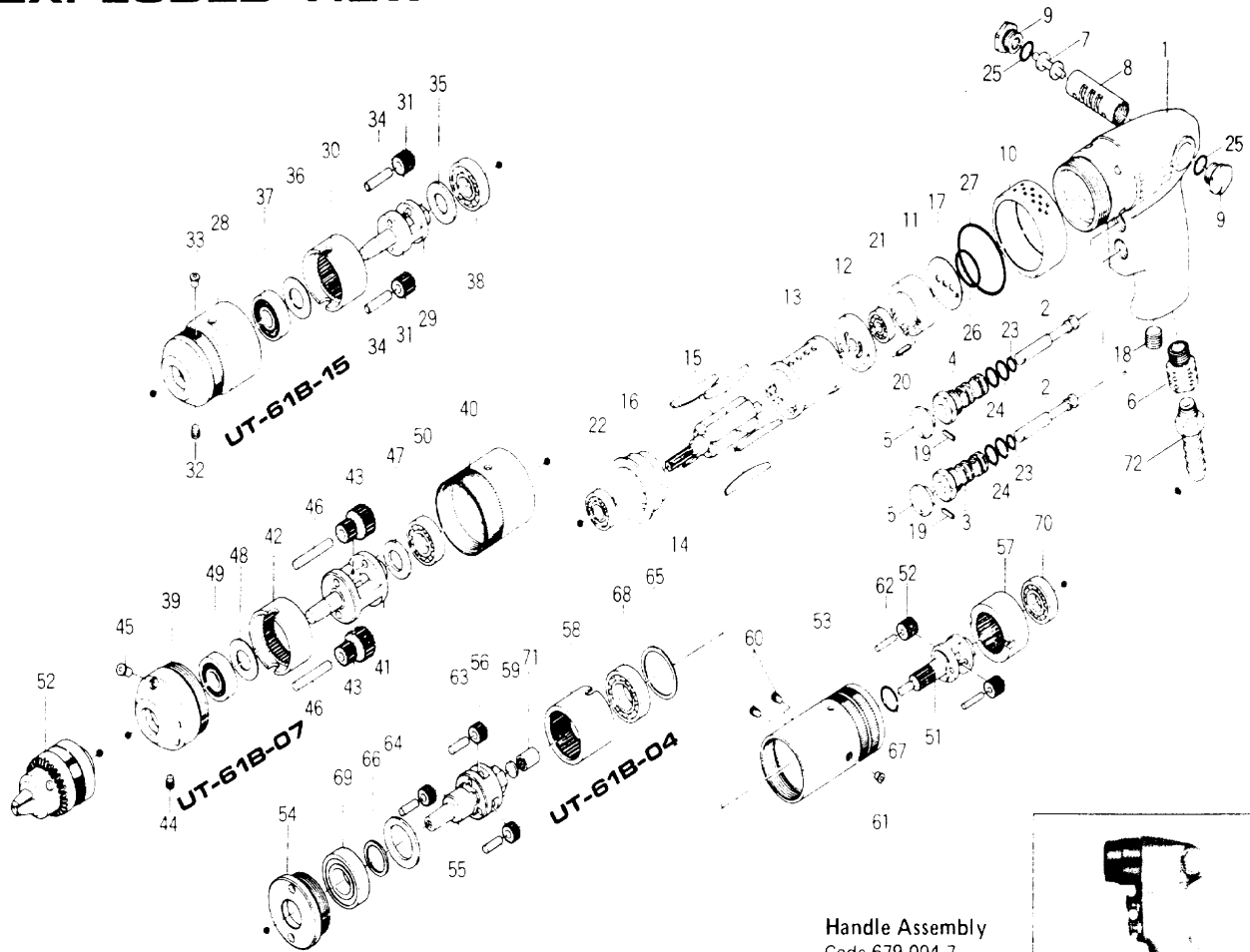
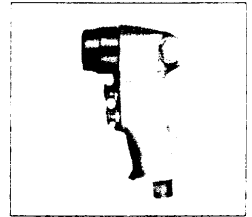


UT-61B SERIES AIR DRILLS & TAPPERS

EXPLODED VIEW



Handle Assembly
Code 679-004-7
Components
(#1, 2, 3, 4, 5, 6, 7, 8,
9, 18, 19, 23, 24, 25)



PARTS LIST

Handle Assembly components are marked with "H".

Index No.	Code No.	Parts Name	Quantity	Index No.	Code No.	Parts Name	Quantity	Index No.	Code No.	Parts Name	Quantity
UT-61B SERIES COMMON PARTS				PARTS FOR UT-61B-15				PARTS FOR UT-61B-07			
#1	679-025-7	Handle	1	#28	612-029-8	Gear Casing	1	#52	612-470-1	First Planet Gear	2
#2	040-100-1	Valve	2	#29	679-319-7	Anvil	1	#53	612-029-6	Gear Casing	1
#3	606-101-1	Valve Bushing	1	#30	612-465-8	Internal Gear	1	#54	679-070-0	Gear Casing Cover	1
#4	040-101-1	Valve Bushing	1	#31	612-470-5	Planet Gear	2	#55	679-319-0	Anvil	1
#5	603-107-2	Throttle Trigger	2	#32	312-757-1	Internal Gear Set Screw	1	#56	612-471-1	Second Planet Gear	3
#6	191-091-5	Air Inlet Bushing	1	#33	968-130-0	Grease Cup (3/16)	1	#57	612-465-6	First Internal Gear	1
#7	679-210-7	Reverse Lever	1	#34	972-164-0	Needle Roller (5x20)	2	#58	612-466-6	Second Internal Gear	1
#8	679-211-8	Reverse Lever Bushing	1	#35	975-138-0	Spacer (22x13.7x2)	1	#59	612-414-1	Front Cover	1
#9	040-214-2	Reverse Lever Cover	2	#36	975-162-0	Spacer (24x12.5x0.4)	1	#60	952-204-0	Allen Head Dog Point Screw (M5x5-L)	2
#10	679-782-7	Exhaust Deflector	1	#37	982-140-0	Ball Bearing (6000Z)	1	#61	968-130-0	Grease Cup (3/16)	1
#11	679-291-7	Rear Plate Spacer	1	#38	982-403-0	Ball Bearing (EE-4)	1	#62	972-119-0	Needle Roller (4x18)	2
#12	679-285-7	Rear Plate	1	PARTS FOR UT-61B-04				#63	972-163-0	Needle Roller (5x18)	3
#13	418-286-1	Cylinder	1	#39	612-029-7	Gear Casing	1	#64	975-250-0	Spacer (32.5x21.2x1)	1
#14	478-287-0	Rotor	1	#40	612-035-3	Casing Connector	1	#65	975-269-0	Spacer (35x30x1)	1
#15	600-288-1	Blade	5	#41	679-319-4	Anvil	1	#66	975-789-0	Adjusting Spacer (22x17x1)	1
#16	612-289-0	Front Plate	1	#42	612-465-7	Internal Gear	1	#67	978-202-0	Snap Ring (20x1)	1
#17	679-809-7	Rear Packing	1	#43	612-470-3	Planet Gear	2	#68	982-103-0	Ball Bearing (6003)	1
#18	966-100-0	Allen Head Plug (1/8)	1	#44	952-205-0	Allen Head Dog Point Screw (M5x5)	1	#69	982-143-0	Ball Bearing (6003Z)	1
#19	973-010-0	Roll Pin (2x10)	2	#45	968-130-0	Grease Cup (3/16)	1	#70	982-403-0	Ball Bearing (EE-4)	1
#20	973-022-0	Roll Pin (2x22)	1	#46	972-174-0	Needle Roller (5x32)	2	#71	988-004-0	Needle Roller Bearing (NK5/12)	1
#21	982-401-0	Ball Bearing (EE-2)	1	#47	975-138-0	Spacer (22x13.7x2)	1	STANDARD ACCESSORIES			
#22	982-402-0	Ball Bearing (EE-3)	1	#48	975-162-0	Spacer (24x12.5x0.4)	1	#72	940-114-0	Air Hose Nipple (NPT1/4x3/8)	1
#23	990-203-0	O-Ring (JW1516-3)	2	#49	982-140-0	Ball Bearing (6000Z)	1	#73	923-052-0	Chuck (8MM)	1
#24	990-610-0	O-Ring (8x2)	4	#50	982-403-0	Ball Bearing (EE-4)	1	#74	927-050-0	Chuck Handle (5MM)	1
#25	990-908-0	O-Ring (SNS-10)	2	#51	612-480-6	Gear Cage	1	#75	937-065-0	Spanner (4.8x22x153)	1
#26	990-925-0	O-Ring (SNS-32)	1	PARTS FOR UT-61B-04							
#27	990-040-0	O-Ring (P42)	1								

When ordering spare parts, please specify tool type, code numbers and parts names.

Printed in Japan

URYU SEISAKU, LTD. Osaka, Japan