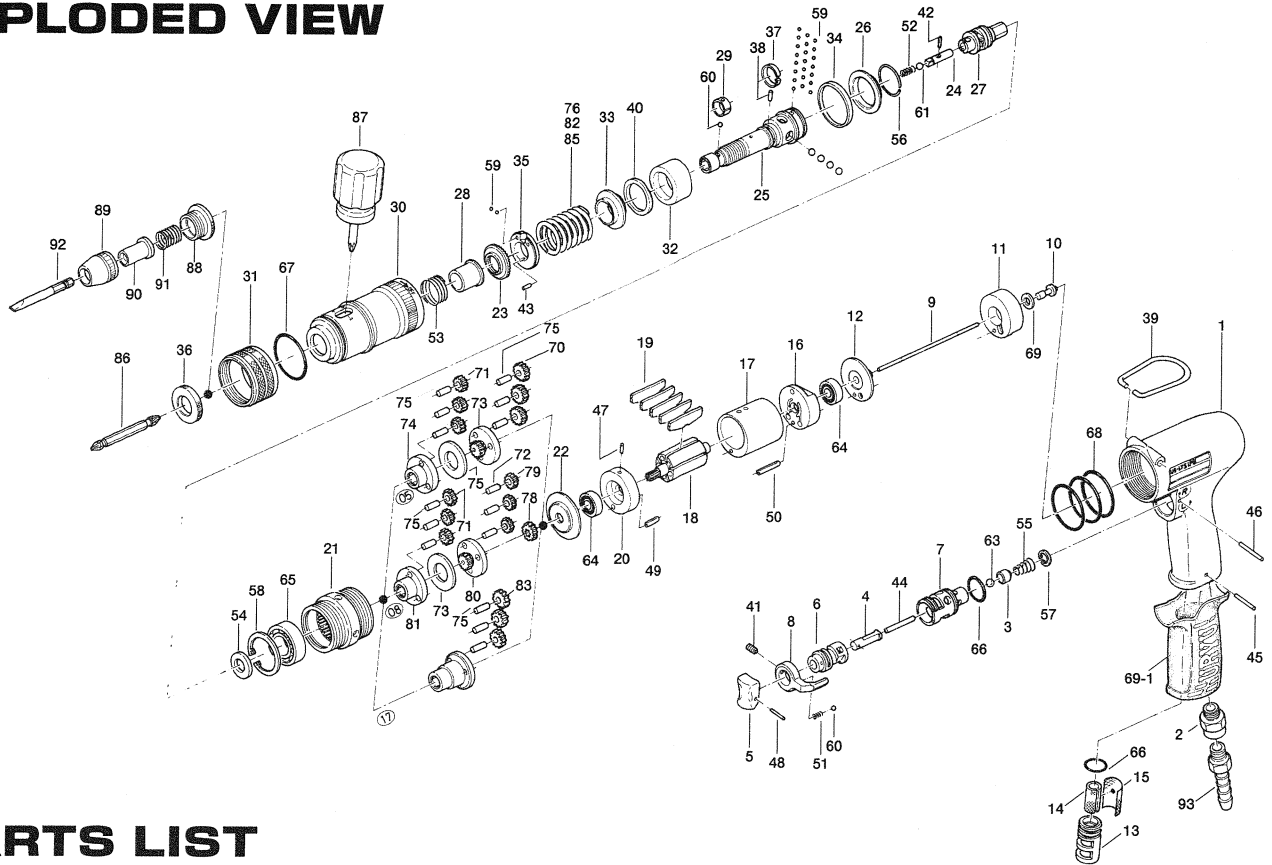


US-LT51 PB SERIES SCREW DRIVERS

EXPLODED VIEW



PARTS LIST

Index No.	Code No.	Parts Name	Quantity	Index No.	Code No.	Parts Name	Quantity	Index No.	Code No.	Parts Name	Quantity
# 1	445-025-9	Casing	1	# 35	444-562-4	Stopper	1	# 68	990-925-0	O-Ring (SNS-32)	3
# 2	480-091-8	Air Inlet Bushing	1	# 36	444-567-4	Bushing	1	# 69	996-411-0	Packing(11×6×1)	1
# 3	480-100-9	Valve	1	# 37	444-670-4	Band	1	# 69-1	174-842-8	Handle Jacket	1
# 4	443-103-5	Valve Rod Bushing	1	# 38	444-764-4	Notch Pin	1	Parts for US-LT51PB-05			
# 5	177-107-5	Valve Lever	1	# 39	010-790-1	Suspension Ring	1	# 70	444-470-4	First Planet Gear	3
# 6	480-210-9	Reverse Valve	1	# 40	944-023-0	Back-Up Ring (P22A)	1	# 71	444-471-4	Second Planet Gear	3
# 7	480-211-9	Reverse Valve Bushing	1	# 41	952-106-0	Allen Head Dog Point Screw(M4×6)	1	# 72	444-480-4	First Gear Casing	1
# 8	480-212-8	Reverse Lever	1	# 42	969-470-0	Pin (E) (2×8)	1	# 73	444-483-4	Gear Casing Spacer	1
# 9	445-104-8	Valve Rod	1	# 43	970-092-0	Pin (H) (2×5.5)	1	# 74	444-485-4	Second Gear Casing	1
# 10	443-254-5	Shut-Off Valve	1	# 44	970-228-0	Pin (H) (3×28)	1	# 75	972-110-0	Roller Pin (4×10)	6
# 11	445-282-9	Handle Bushing	1	# 45	971-120-0	Pin (2×20)	1	# 76	976-620-0	Spring (27.5×38×3.5)	1
# 12	445-291-8	Rear Plate Spacer	1	# 46	971-123-0	Pin (2×23)	1	Parts for US-LT51PB-08			
# 13	480-780-8	Exhaust Stack	1	# 47	973-007-0	Roll Pin (2×7)	1	# 78	444-460-3	Rotor Gear	1
# 14	117-835-5	Filter	1	# 48	973-012-0	Roll Pin (2×12)	1	# 79	444-471-3	Second Planet Gear	3
# 15	480-042-8	Silencer	1	# 49	973-072-0	Roll Pin (2.5×12)	1	# 80	444-480-3	First Planet Gear	1
# 16	444-285-4	Rear Casing	1	# 50	973-080-0	Roll Pin (2.5×20)	1	# 81	444-485-3	Second Gear Casing	1
# 17	445-286-8	Cylinder	1	# 51	976-006-0	Spring (3×5×0.4)	1	# 82	976-614-0	Spring (27×38×3.0)	1
# 18	444-287-4	Rotor	1	# 52	976-058-0	Spring (4.5×11×0.4)	1	Parts for US-LT51PB-17			
# 19	444-288-6	Blade (PC)	5	# 53	976-450-0	Spring (18.5×10×1.0)	1	# 83	444-470-4	First Planet Gear	3
# 20	444-289-4	Front Plate	1	# 54	975-109-0	Spacer (20×9.5×1.5)	1	# 84	444-480-2	Gear Casing	1
# 21	444-029-9	Gear Casing	1	# 55	977-150-0	Cone Spring (6.8×8.5×8×0.4)	1	# 85	976-588-0	Spring (25×38×2.3)	1
# 22	444-807-4	Spacer	1	# 56	978-229-0	Snap Ring (23×1)	1	Accessories			
# 23	472-257-8	Adjusting Screw	1	# 57	979-002-0	Inner Snap Ring(9)	1	# 86	916-810-0	(+) Double Bit (No.2×75)	1
# 24	471-318-5	Pilot Pin	1	# 58	979-025-0	Inner Snap Ring(32)	1	# 87	939-402-0	Manual Driver (No.2)	1
# 25	444-319-4	Anvil	1	# 59	981-001-0	Ball (3/32)	24	# 88	444-082-4	Connecting Screw	1
# 26	444-334-8	Anvil Spacer	1	# 60	981-002-0	Ball (1/8)	2	# 89	471-057-7	Bit Casing	1
# 27	444-346-3	Cam	1	# 61	981-004-0	Ball (3/16)	1	# 90	917-350-0	Finder (7.3×56×24-4E)	1
# 28	472-351-7	Bit Sleeve	1	# 62	981-005-0	Ball (7/32)	4	# 91	976-330-0	Spring (13.8×18×0.8)	1
# 29	471-356-7	Bit Band	1	# 63	981-206-0	Ball (1/4)(Black)	1	# 92	916-030-0	(-) Bit (5×56)	1
# 30	444-369-8	Clutch Casing	1	# 64	982-066-0	Ball Bearing (607ZZ)	2	# 93	940-114-0	Air Hose Nipple	1
# 31	444-370-4	Clutch Casing Sleeve	1	# 65	982-102-0	Ball Bearing (6002)	1				
# 32	444-375-3	Cam Ring	1	# 66	990-912-0	O-Ring (SNS-14)	2				
# 33	444-379-3	Retainer	1	# 67	990-935-0	O-Ring (SNS-31.5)	1				
# 34	444-397-8	Nut Flange	1								

When ordering spare parts, please specify tool type, code number and part name.

Printed in Japan



URYU SEISAKU, LTD. Osaka, Japan

OKA-437-01-10-19-2003