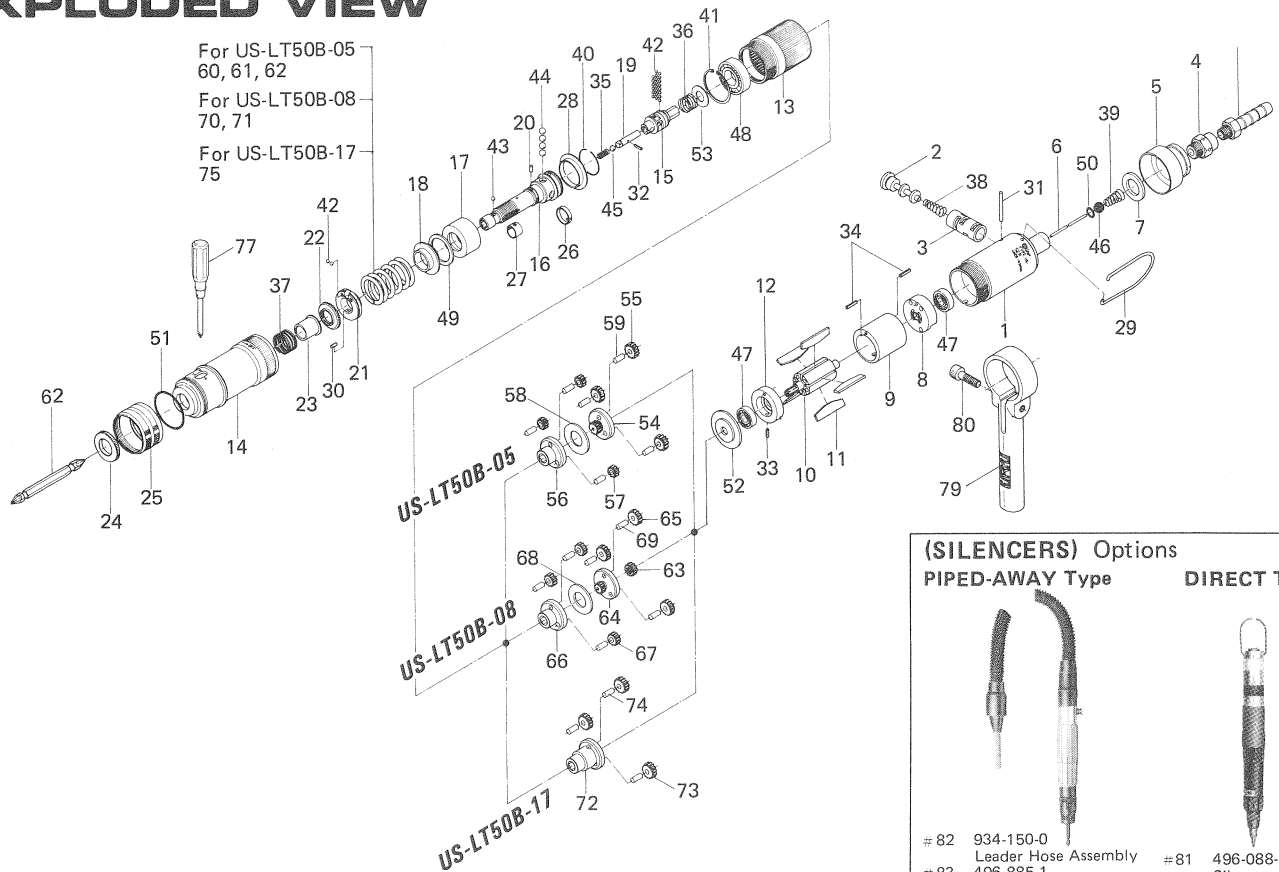


US-LT50B SERIES SCREW DRIVERS

EXPLODED VIEW



PARTS LIST

Index No.	Code No.	Part Name	Q'ty	Index No.	Code No.	Part Name	Q'ty	Index No.	Code No.	Part Name	Q'ty
US-LT50 series											
Common parts											
# 1	444-025-4	Casing	1	# 32	969-470-0	Pin (2x8)	1	Parts for US-LT50B-08			
# 2	893-058-1	Reverse Valve	1	# 33	973-007-0	Roll Pin (2 x7)	1	# 63	444-460-3	Rotor Gear	1
# 3	444-211-4	Reverse Valve Bushing	1	# 34	973-072-0	Roll Pin (2.5x12)	2	# 64	444-480-3	First Gear Cage	1
# 4	480-091-8	Air Inlet Bushing	1	# 35	976-058-0	Spring (4.5x11)	1	# 65	444-471-4	First Planer Gear	3
# 5	444-782-4	Exhaust Deflector	1	# 36	976-332-0	Spring (13.5x10)	1	# 66	444-485-3	Second Gear Case	1
# 6	444-104-4	Valve Rod	1	# 37	976-450-0	Spring (18.5x10)	1	# 67	444-471-3	Second Planet Gear	3
# 7	161-835-3	Filter(K-30)	1	# 38	977-103-0	Cone Spring (6x9.5x16)	1	# 68	444-483-4	Gear Cage Spacer	1
# 8	444-285-4	Rear Plate	1	# 39	977-157-0	Cone Spring (7x11x20)	1	# 69	972-110-0	Needle Roller (4x10)	6
# 9	444-286-4	Cylinder	1	# 40	978-229-0	Snap Ring (23x1)	1	# 70	976-614-0	Spring (Standard: 27x38)	1
# 10	444-287-4	Rotor	1	# 41	979-025-0	Inner Snap Ring (32)	1	# 71	976-588-0	Spring (Weaker: 25x38)	1
# 11	444-288-6	Blade (PC)	5	# 42	981-001-0	Ball (3/32)	24	Parts for US-LT50B-17			
# 12	444-289-4	Front Plate	1	# 43	981-002-0	Ball (1/8)	1	# 72	444-480-2	Gear Cage	1
# 13	444-029-4	Gear Casing	1	# 44	981-004-0	Ball (3/16)	1	# 73	444-470-4	First Planet Gear	3
# 14	444-369-4	Clutch Casing	1	# 45	981-005-0	Ball (7/32)	4	# 74	972-110-0	Needle Roller (4x10)	3
# 15	444-346-3	Cam	1	# 46	981-208-0	Ball (5/16)	1	# 75	976-588-0	Spring (Standard: 25x38)	1
# 16	444-319-4	Anvil	1	# 47	982-066-0	Ball Bearing (607 ZZ)	2	Accessories			
# 17	444-375-3	Cam Ring	1	# 48	982-102-0	Ball Bearing (6002)	1	# 76	916-810-0	(+) Double Bit (No.2x75)	1
# 18	444-379-3	Retainer	1	# 49	944-023-0	Supporting Ring (P-22A)	1	# 77	939-402-0	Torque Adjusting Driver (No.2)	1
# 19	471-318-5	Pilot Pin	1	# 50	990-005-0	O Ring (P-7)	1	# 78	940-114-0	Air Hose Nipple	1
# 20	444-764-4	Notch Pin	1	# 51	990-935-0	O Ring (SNS-31.5)	1	Optional accessories			
# 21	444-562-4	Spring Holder	1	# 52	444-807-4	Spacer	1	# 79	444-516-4	Reaction Bar	1
# 22	472-257-8	Regulating Screw	1	# 53	975-109-0	Spacer (20x 9.5x1.5)	1	# 80	945-222-0	Allen Head Bolt (M6x22)	1
# 23	472-351-7	Bit Sleeve	1	Parts for US-LT50B-05				For Direct Type Silencer			
# 24	444-567-4	Bushing	1	# 54	444-480-4	First Gear Cage	1	# 81	496-088-1	Silencer Assembly	1
# 25	444-370-4	Clutch Casing Sleeve	1	# 55	444-470-4	First Planer Gear	3	For Piped-away Type			
# 26	444-670-4	Band	1	# 56	444-485-4	Second Gear Cage	1	# 82	934-150-0	Leader Hose Assembly	1
# 27	471-356-7	Bit Band	1	# 57	444-471-4	Second Planet Gear	3	# 83	496-885-1	Exhaust House Assembly	1
# 28	444-334-8	Anvil Spacer	1	# 58	444-483-4	Gear Cage Spacer	1				
# 29	191-790-1	Suspension Ring	1	# 59	972-110-0	Needle Roller (4x10)	6				
# 30	970-092-0	Pin (H) (2x5.5)	1	# 60	976-620-0	Spring (Standard: 27.5x38)	1				
# 31	970-226-0	Pin (H) (3x26)	1	# 61	976-614-0	Spring (Weaker: 27x38)	1				
				# 62	976-588-0	Spring (Weakest: 25x38)	1				

When ordering spare parts, please specify tool type, code number and parts name.

Printed in Japan



URYU SEISAKU, LTD. Osaka, Japan

For further information, please contact at any time your nearest URYU distributor.

OKA-253-04-10-06-2009