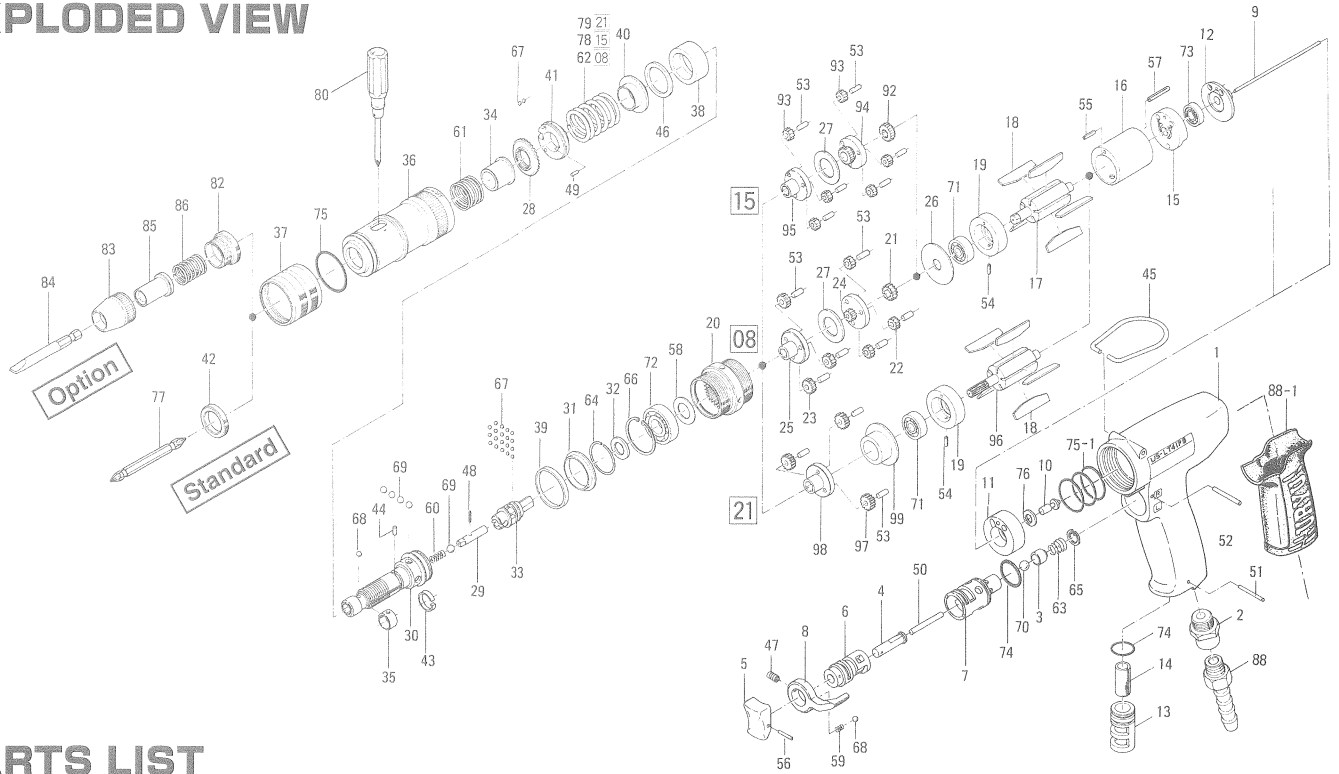


US-LT41PB SERIES SCREWDRIVERS

EXPLODED VIEW



PARTS LIST

Index No.	Code No.	Parts Name	Quantity	Index No.	Code No.	Parts Name	Quantity	Index No.	Code No.	Parts Name	Quantity
# 1	443-025-6	Casing	1	#47	952-106-0	Allen Head Dog Point		#24	472-480-7	First Gear Cage	1
# 2	480-091-8	Air Inlet Bushing	1			Screw (M4×6)	1	#25	472-485-7	Second Gear Cage	1
# 3	480-100-9	Valve	1	#48	969-470-0	Pin (E) (2×8)	1	#26	472-807-7	Spacer	1
# 4	443-103-5	Valve Rod Bushing	1	#49	970-092-0	Pin (H) (2×5.5)	1	#27	496-483-1	Gear Cage Spacer	1
# 5	177-107-5	Valve Lever	1	#50	970-228-0	Pin (H)(3×28)	1	#53	972-089-0	Roller Pin (3×8)	6
# 6	480-210-9	Reverse Valve	1	#51	971-120-0	Pin (2×20)	1	#62	976-515-0	Spring (22.7×28) (2.6)	1
# 7	480-211-9	Reverse Valve Bushing	1	#52	971-123-0	Pin (2×23)	1	For US-LT41PB-15			
# 8	480-212-8	Reverse Lever	1	#54	973-006-0	Roll Pin (2×6)	1	#17	472-287-7	Rotor	1
# 9	443-104-5	Valve Rod	1	#55	973-010-0	Roll Pin (2×10)	1	#92	472-460-5	Rotor Gear	1
#10	443-254-5	Shut-Off Valve	1	#56	973-012-0	Roll Pin (2×12)	1	#93	472-470-5	First Planet Gear	6
#11	443-282-6	Handle Bushing	1	#57	973-018-0	Roll Pin (3×18)	1	#94	472-480-5	First Gear Cage	1
#12	443-291-5	Rear Plate Spacer	1	#58	975-106-0	Spacer (18.5×11×1)	1	#95	472-485-5	Second Gear Cage	1
#13	480-780-8	Exhaust Stack	1	#59	976-006-0	Spring (3×5) (0.4)	1	#96	472-807-7	Spacer	1
#14	177-835-6	Filter	1	#60	976-058-0	Spring (4.5×11) (0.4)	1	#27	496-483-1	Gear Cage Spacer	1
#15	467-285-7	Rear Plate	1	#61	976-450-0	Spring (18.5×10) (1.0)	1	#53	972-089-0	Roller Pin (3×8)	6
#16	443-286-5	Cylinder	1	#63	977-150-0	Cone Spring (6.8×8.5×8) (0.4)	1	#78	976-516-0	Spring (22.1×28) (2.3)	1
#18	472-288-0	Blade (PC)	5	#64	978-218-0	Snap Ring (22×1)	1	For US-LT41PB-21			
#19	472-289-7	Front Plate	1	#65	979-002-0	Inner Snap Ring (9)	1	#96	472-287-3	Rotor	1
#20	463-029-8	Gear Casing	1	#66	979-326-0	Inner Snap Ring (IRTW-26)	1	#97	472-470-3	Planet Gear	3
#28	472-257-8	Regulating Screw	1	#67	981-001-0	Ball (3/32)	21	#98	472-480-3	Gear Cage	1
#29	471-318-5	Pilot Pin	1	#68	981-002-0	Ball (1/8)	1	#99	472-807-3	Spacer	1
#30	472-319-7	Anvil	1	#69	981-004-0	Ball (3/16)	5	#53	972-089-0	Roller Pin (3×8)	3
#31	463-334-7	Anvil Spacer	1	#70	981-206-0	Ball (1/4)	1	#79	976-517-0	Spring (21.5×31) (2.0)	1
#32	461-344-6	Cam Retainer	1	#71	982-063-0	Ball Bearing (606ZZ)	1	Accessories			
#33	472-346-5	Cam	1	#72	982-100-0	Ball Bearing (6000)	1	#77	916-810-0	Double Bit No.2×75	1
#34	472-351-7	Bit Sleeve	1	#73	987-039-0	Miniature Ball Bearing (R1560ZZ)	1	#80	939-402-0	Manual Driver (No.2)	1
#35	471-356-7	Bit Band	1					#88	940-113-0	Air Hose Nipple	1
#36	463-369-7	Clutch Casing	1	#74	990-912-0	O-Ring (SNS-14)	2	Optional Accessories			
#37	472-370-7	Clutch Casing Sleeve	1	#75	990-923-0	O-Ring (SNS-26)	1	For Slotted Head Bit and Finder (In common)			
#38	472-375-7	Cam Ring	1	#75-1	990-333-0	O-Ring (JW1530-23)	3	[Take out #42, #77 and use following]			
#39	463-397-7	Nut Flange	1	#76	996-411-0	Packing (11×6×1)	1	#82	472-082-7	Bit Casing Set Screw	1
#40	472-379-8	Retainer	1	#88-1	174-842-8	Handle Cover	1	#83	471-057-7	Bit Casing	1
#41	472-562-8	Stopper	1	For US-LT41PB-08				#84	916-030-0	(-)Bit (5×56) (6.35H)	1
#42	472-567-7	Bushing	1	#17	472-287-7	Rotor	1	#85	917-350-0	Finder (73×56×24)	1
#43	471-670-7	Band	1	#21	472-460-7	Rotor Gear	1	#86	976-330-0	Spring (138×18) (08)	1
#44	471-764-7	Notch Pin	1	#22	472-470-7	First Planet Gear	3				
#45	010-790-1	Suspension Ring	1	#23	472-471-7	Second Planet Gear	3				
#46	944-019-0	Support Ring (P19)	1								

When ordering spare parts, please specify tool type, code number and part name.

Printed in Japan



URYU SEISAKU, LTD. Osaka Japan

For further information, please contact at any time your nearest URYU distributor.

OKA-249-08-01-25-1007