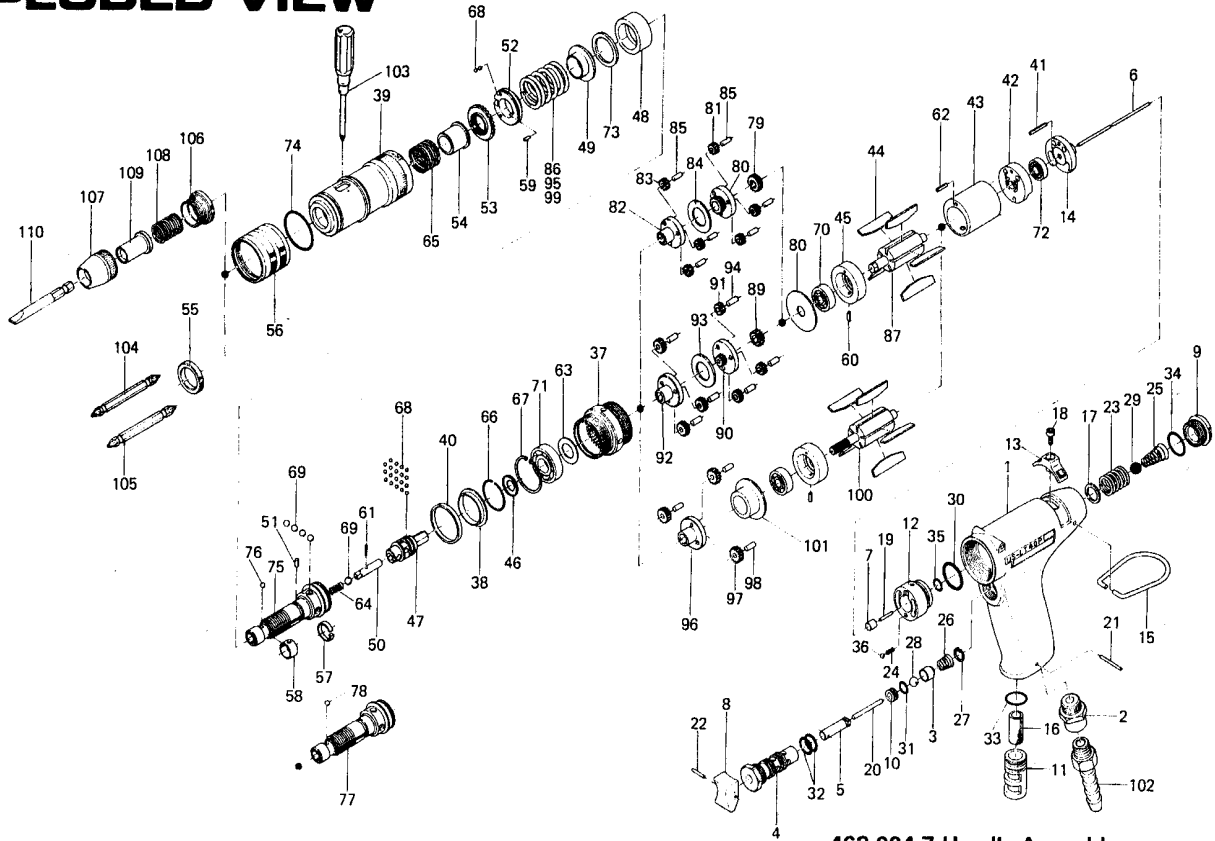


US-LT40P SERIES SCREW DRIVERS

EXPLODED VIEW



463-004-7 Handle Assembly

[Component parts are marked with "x"]

PARTS LIST

Index No.	Parts No.	Parts Name	Quantity	Index No.	Parts No.	Part Name	Quantity	Index No.	Parts No.	Parts Name	Quantity
# 1	463-025-8	x Handle	1	# 43	472-286-7	Cylinder	1	# 80	472-480-7	First Gear Cage	1
# 2	480-091-8	x Air Inlet Bushing	1	# 44	472-288-9	Blade (GK)	5	# 81	472-470-7	First Planet Gear	3
# 3	480-100-9	x Valve	1	# 45	472-289-7	Front Plate	1	# 82	472-485-7	Second Gear Cage	1
# 4	444-101-8	x Valve Bushing	1	# 46	472-164-7	Spring Setter	1	# 83	472-471-7	Second Planet Gear	3
# 5	444-103-7	x Valve Rod Bushing	1	# 47	472-346-7	Cam	1	# 84	496-483-1	Gear Cage Spacer	1
# 6	463-104-7	Valve Rod	1	# 48	472-375-7	Cam Ring	1	# 85	972-089-0	Needle Roller (3x8)	6
# 7	444-106-8	Valve Rod Cap	1	# 49	472-379-8	Retainer	1	# 86	976-515-0	Spring (22.7x28)	1
# 8	480-107-8	x Valve Lever	1	# 50	471-318-7	Pilot Pin	1	# 87	472-287-7	Rotor	1
# 9	444-108-8	Valve Plug	1	# 51	471-764-7	Notch Pin	1	# 88	472-807-7	Spacer	1
# 10	480-119-1	x Valve Spacer	1	# 52	472-562-8	Spring Holder	1	Parts for US-LT40PA/B-15 type			
# 11	480-780-8	Exhaust Stack	1	# 53	472-257-8	Regulating Screw	1	# 89	472-460-5	Rotor Gear	1
# 12	463-210-8	Reverse Valve	1	# 54	472-351-7	Bit Sleeve	1	# 90	472-480-5	First Gear Cage	1
# 13	463-212-7	Reverser Lever	1	# 55	472-567-7	Bushing	1	# 91	472-470-5	Planet Gear	6
# 14	463-222-7	Reverser Lever Setter	1	# 56	472-370-7	Clutch Casing Sleeve	1	# 92	472-485-5	Second Gear Cage	1
# 15	010-790-1	Suspension Ring	1	# 57	471-670-7	Band	1	# 93	496-483-1	Gear Cage Spacer	1
# 16	480-835-8	Filter	1	# 58	471-356-7	Bit Band	1	# 94	972-089-0	Needle Roller (3x8)	6
# 17	944-009-0	Back-up Ring (P-10A)	1	# 59	970-092-0	Roll Pin (2x5.5)	1	# 95	976-516-0	Spring (22.1x28)	1
# 18	945-000-0	Hexagon Head Bolt (M3x8)	1	# 60	973-006-0	Roll Pin (2x6)	1	Parts for US-LT40PA/B-21 type			
# 19	969-412-0	Pin (2x12)	1	# 61	973-003-0	Roll Pin (1.5x8)	1	# 96	472-480-3	Gear Cage	3
# 20	970-229-0	x Pin (3x29)	1	# 62	973-010-0	Roll Pin (2x10)	1	# 97	472-470-3	Planet Gear	1
# 21	971-122-0	Pin (2x22)	1	# 63	975-106-0	Spacer (18.5x11x1)	1	# 98	972-089-0	Needle Roller (3x8)	3
# 22	973-012-0	x Roll Pin (2x12)	1	# 64	976-058-0	Spring (4.5x11)	1	# 99	976-517-0	Spring (21.5x28)	1
# 23	976-337-0	Spring (13.7x15)	1	# 65	976-450-0	Spring (18.5x10)	1	# 100	472-287-3	Rotor	1
# 24	976-022-0	Spring (3x5.5)	1	# 66	978-218-0	Snap Ring (22x1)	1	# 101	472-807-3	Spacer	1
# 25	977-127-0	Cone Spring (6.5x11x20)	1	# 67	979-326-0	Inner Snap Ring (26)	1	Accessories			
# 26	977-150-0	x Cone Spring (6.8x8.5x8)	1	# 68	981-001-0	Ball (3/32)	21	# 102	940-113-0	Air Hose Nipple	1
# 27	979-002-0	x Inner Snap Ring (9)	1	# 69	981-004-0	Ball (3/16)	1	# 103	939-400-0	Torque Adjusting Driver (No 1)	1
# 28	981-206-0	x Ball (3/4)	1	# 70	982-063-0	Ball Bearing (606ZZ)	1	# 104	916-710-0	Double Bit No 2x70 (5H)	1
# 29	981-208-0	Ball (5/16)	1	# 71	982-100-0	Ball Bearing (6000)	1	# 105	916-810-0	Double Bit No 2x75 (6.35H)	1
# 30	990-916-0	O Ring (SNS-18)	1	# 72	987-039-0	Miniature Ball Bearing (R-1560ZZ)	1	Optional Accessories			
# 31	990-903-0	x O Ring (SNS-5)	1	# 73	944-019-0	Back-up Pin (P-19)	1	For Slotted Head Bit and Finder (in common)			
# 32	990-908-0	x O Ring (SNS-10)	2	# 74	990-923-0	O Ring (SNS-26)	1	[Take out "472-567-7 Bushing" and use following]			
# 33	990-912-0	O Ring (SNS-14)	1	Parts for A Type (5mm Hex.) Anvil				# 106	472-082-7	Bit Casing Set Screw	1
# 34	990-914-0	O Ring (SNS-16)	1	# 75	472-319-6	Anvil	1	# 107	471-057-7	Bit Casing	1
# 35	990-005-0	O Ring (P-7)	1	# 76	981-002-0	Ball (1/8)	1	# 108	976-330-0	Spring (13.8x18)	1
# 36	981-002-0	Ball (1/8)	1	Parts for B Type (1/4" Hex.) Anvil				# 109	917-350-0	Finder (7.3x56x24)	1
# 37	463-029-8	Gear Casing	1	# 77	472-319-7	Anvil	1	# 110	916-030-0	(-) Bit (5x56)	1
# 38	463-334-7	Anvil Spacer	1	# 78	981-002-0	Ball (1/8)	1	Parts for US-LT40PA/B-08 type			
# 39	463-369-7	Clutch Casing	1	# 79	472-460-7	Rotor Gear	1				
# 40	463-397-7	Spacer	1								
# 41	973-016-0	Roll Pin (2x16)	1								
# 42	472-285-7	Rear Plate	1								

When ordering spare parts, please specify tool type, code number and part name.

Printed in Japan

URYU SEISAKU, LTD. Osaka, Japan

OKA-249-92-04-22-2002