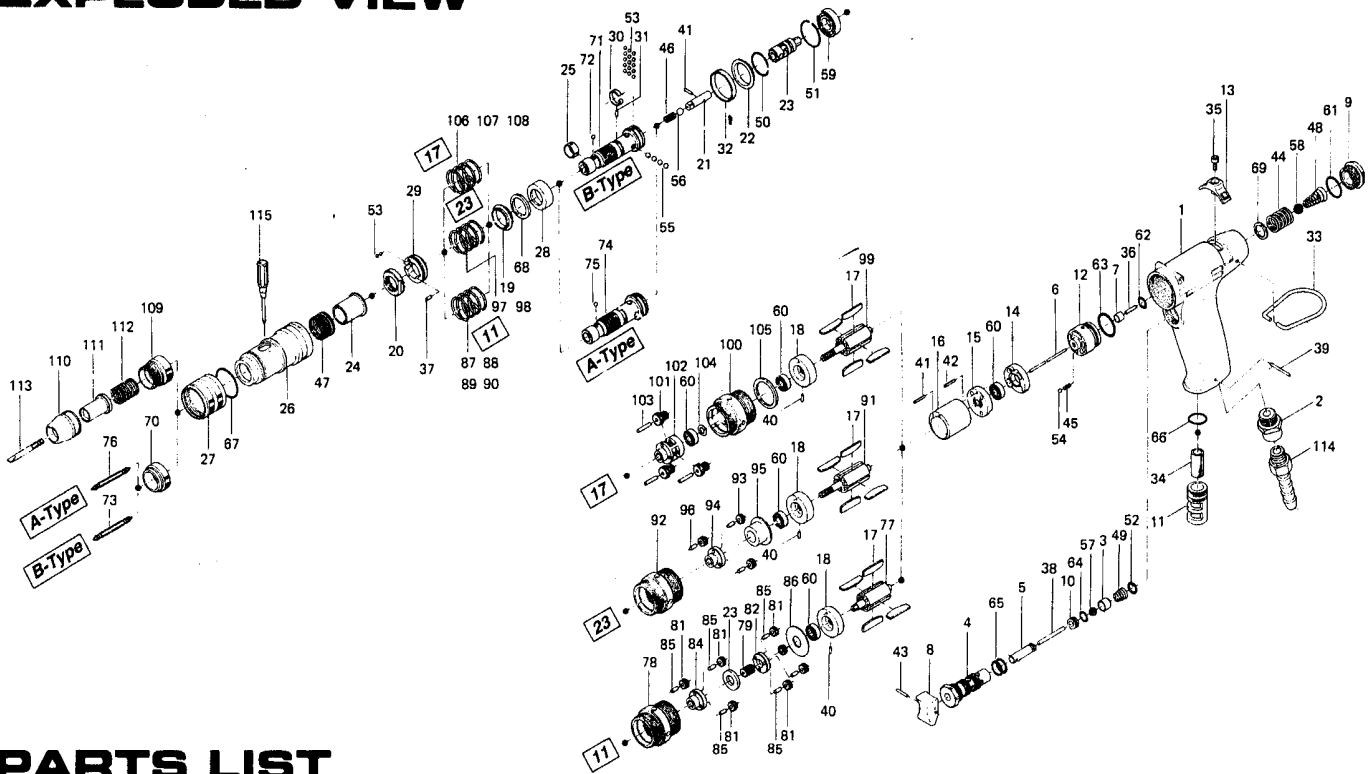


US-LT30PA(B)-(11, 17, 23) SERIES PISTOL-TYPE SCREW DRIVER

EXPLODED VIEW



PARTS LIST

Index No.	Code No.	Part Name	Quantity	Index No.	Code No.	Part Name	Quantity	Index No.	Code No.	Part Name	Quantity
# 1	462-025-8	Casing	1	# 48	977-127-0	Cone Spring (6.5x11x20)	1	# 84	471-485-7	Second Gear Cage	1
# 2	480-091-8	Air Inlet Bushing	1	# 49	977-150-0	Cone Spring(6.8x8.5x8)(0.4)	1	# 85	972-033-0	Roller Pin (2.5x8)	6
# 3	480-100-9	Valve	1	# 50	978-185-0	Snap Ring (19x1)	1	# 86	975-178-0	Spacer (26x10x1.5)	1
# 4	444-101-8	Valve Bushing	1	# 51	978-229-0	Snap Ring (23x1)	1	# 87	976-472-0	Spring (20.6x22) (2.1) (Standard)	1
# 5	444-103-8	Valve Rod Bushing	1	# 52	979-002-0	Inner Snap Ring (9)	1	# 88	976-493-0	Spring(20.8x22)(2.0)(Weak)	1
# 6	462-104-7	Valve Rod	1	# 53	981-001-0	Ball (3/32)	17	# 89	976-471-0	Spring (19.4x22) (1.6) (Weaker)	1
# 7	444-106-8	Valve Rod Cap	1	# 54	981-002-0	Ball (1/8)	1	# 90	976-504-0	Spring(21x22)(2.3)(Strong)	1
# 8	480-107-8	Valve Lever	1	# 55	981-003-0	Ball (5/32)	4	Parts for US-LT30P-23			
# 9	444-108-8	Valve Plug	1	# 56	981-004-0	Ball (3/16)	1	# 91	471-287-5	Rotor	1
# 10	480-119-1	Valve Spacer	1	# 57	981-206-0	Ball (1/4)	1	# 92	462-029-8	Gear Casing	1
# 11	480-780-8	Exhaust Deflector	1	# 58	981-208-0	Ball (5/16)	1	# 93	471-470-3	Planet Gear	3
# 12	462-210-8	Reverse Valve	1	# 59	982-901-0	Ball Bearing (6900)	1	# 94	471-480-3	Gear Cage	1
# 13	462-212-7	Reverse Lever	1	# 60	987-041-0	Miniature Ball Bearing (R1350ZZ)	2	# 95	471-483-3	Gear Cage Spacer	1
# 14	462-222-7	Reverse Valve Setter	1	# 61	990-914-0	O-Ring (SNS 16)	1	# 96	972-033-0	Roller Pin (2.5x8)	3
# 15	471-285-7	Rear Plate	1	# 62	990-005-0	O-Ring (P7)	1	# 97	976-471-0	Spring (19.4x22) (1.6) (Standard)	1
# 16	471-286-7	Cylinder	1	# 63	990-916-0	O-Ring (SNS 18)	1	# 98	976-493-0	Spring (20.8x22) (2.0) (Strong)	1
# 17	471-288-9	Blade (GK)	4	# 64	990-903-0	O-Ring (SNS 5)	1	Parts for US-LT30P-17			
# 18	471-289-7	Front Plate	1	# 65	990-908-0	O-Ring (SNS 10)	2	# 99	471-287-5	Rotor	1
# 19	471-164-8	Spring Holder	1	# 66	990-912-0	O-Ring (SNS 14)	1	# 100	462-029-8	Gear Casing	1
# 20	471-257-7	Regulator Screw	1	# 67	990-919-0	O-Ring (SNS 22)	1	# 101	471-470-5	Planet Gear	3
# 21	471-318-7	Pilot Pin	1	# 68	944-016-0	Back-Up Ring (P16)	1	# 102	471-480-5	Gear Cage	1
# 22	462-334-7	Anvil Spacer	1	# 69	944-009-0	Back-Up Ring (P10A)	1	# 103	972-036-0	Roller Pin (2.5x15.8A)	3
# 23	471-346-7	Cam	1	# 70	911-567-6	Bushing	1	# 104	975-009-0	Spacer (9x5.2x0.3)	1
# 24	471-351-6	Bit Sleeve	1	Parts for B-Type				# 105	975-188-0	Spacer (26x20x1.5)	1
# 25	471-356-7	Bit Band	1	# 71	471-319-2	Anvil	1	# 106	976-493-0	Spring (20.8x22) (2.0)	1
# 26	462-369-7	Clutch Casing	1	# 72	981-002-0	Ball (1/8)	1	# 107	976-491-0	Spring(20x22)(1.8)(Weak)	1
# 27	471-370-7	Clutch Casing Sleeve	1	# 73	916-810-0	(+) Double Bit (No. 2x75) (6.35)	1	# 108	976-504-0	Spring (21x22) (2.3)	1
# 28	471-375-8	Cam Ring	1	Parts for A-Type				Parts for Finder			
# 29	471-562-7	Retainer	1	# 74	471-319-5	Anvil	1	# 109	471-082-7	Bit Casing Set Screw	1
# 30	471-670-7	Band	1	# 75	981-003-0	Ball (5/32)	1	# 110	471-057-7	Bit Casing	1
# 31	471-764-7	Notch Pin	1	# 76	916-710-0	(+) Double Bit (No. 2x70) (5H)	1	# 111	917-350-0	Finder	1
# 32	462-397-7	Retainer	1	Parts for US-LT30P-11				# 112	976-330-0	Spring (13.8x18) (0.8)	1
# 33	010-790-1	Suspension Ring	1	# 77	471-287-7	Rotor	1	# 113	916-030-0	(-) Bit (5x56) (6.35H)	1
# 34	480-835-8	Filter	1	# 78	462-029-8	Gear Casing	1	Accessories			
# 35	945-000-0	Allen Head Bolt (M3x8)	1	# 79	471-445-7	Middle Gear Casing	1	# 114	940-113-0	Air Hose Nipple (NPT 1/4x1/4)	1
# 36	969-412-0	Pin (G) (2x12)	1	# 80	471-460-7	Rotor Gear	1	# 115	939-401-0	Manual Driver (No. 2)	1
# 37	970-091-0	Pin (H) (2x4.5)	1	# 81	471-471-7	Second Planet Gear	6				
# 38	970-229-0	Pin (H) (3x29)	1	# 82	471-480-7	First Gear Cage	1				
# 39	971-122-0	Pin (2x22)	1	# 83	471-483-7	Geat Cage Spacer	1				
# 40	973-001-0	Roll Pin (1.5x6)	1								
# 41	973-003-0	Roll Pin (1.5x8)	2								
# 42	973-046-0	Roll Pin (1.5x12)	1								
# 43	973-012-0	Roll Pin (2x12)	1								
# 44	976-337-0	Spring (13.7x15) (1.6)	1								
# 45	976-022-0	Spring (3x5.5) (0.4)	1								
# 46	976-058-0	Spring (4.5x11) (0.4)	1								
# 47	976-450-0	Spring (18.5x10) (1.0)	1								

When ordering spare parts, please specify tool type, code number and part name.

Printed in Japan

URYU SEISAKU, LTD. Osaka, Japan

OKA-336-92-04-22-2002