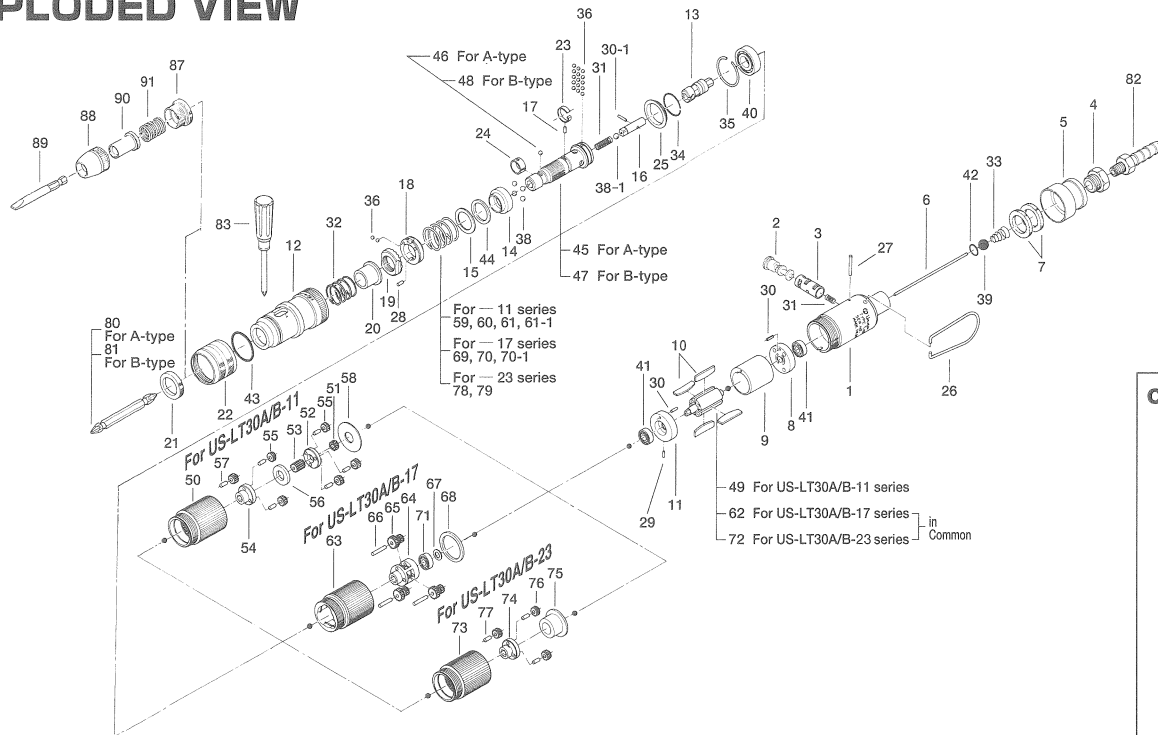


US-LT30 SERIES SCREW DRIVERS

EXPLODED VIEW



Optional Silencers



#84 408-088-2
Silencer
Assembly

PARTS LIST

Index No.	Code No.	Parts Name	Quantity	Index No.	Code No.	Parts Name	Quantity	Index No.	Code No.	Parts Name	Quantity		
Common Parts for US-LT30 series													
# 1	471-025-8	Casing	1	#38	981-003-0	Ball(5/32)	4	#66	972-036-0	Roller Pin(2.5×15.8A)	3		
# 2	893-056-1	Reverse Valve(Lock)	1	#38-1	981-004-0	Ball(3/16)	1	#67	975-009-0	Spacer(9×5.2×0.3)	1		
# 3	471-211-7	Reverse Valve Bushing	1	#39	981-208-0	Ball(5/16)Black	1	#68	975-188-0	Spacer(26×20×1.5)	1		
# 4	480-091-8	Air Inlet Bushing	1	#40	982-901-0	Ball Bearing(6900)	1	#69	976-493-0	Spring (Red-Standard)	1		
# 5	408-782-1	Exhaust Deflector	1	#41	987-041-0	Miniature Ball Bearing (R1350ZZ)	2	#70	976-471-0	Spring (Pink-Weak)	1		
# 6	471-104-7	Valve Rod	1	#42	990-004-0	O Ring(P-6)	1	#70-1	976-472-0	Spring (Blue-Strong)	1		
# 7	471-835-5	Filter(F100)	2	#43	990-919-0	O Ring(SNS-22)	1	#71	987-013-0	Miniature Ball Bearing(R1350)	1		
# 8	471-285-7	Rear Plate	1	#44	944-016-0	Back-Up Ring(P-16)	1	Parts for US-LT30A-23 and 30B-23					
# 9	471-286-7	Cylinder	1	Parts for- US-LT30A series			#72	471-287-5	Rotor	1			
#10	471-288-0	Rotor Blade(PC)	4	#45	471-319-5	Anvil	1	#73	471-029-7	Gear Casing	1		
#11	471-289-7	Front Plate	1	#46	981-003-0	Ball(5/32)	4	#74	471-480-3	Gear Cage	1		
#12	471-369-7	Clutch Casing	1	Parts for US-LT30B series			#75	471-483-3	Gear Cage Spacer	1			
#13	471-346-5	Cam	1	#47	471-319-2	Anvil	1	#76	471-470-3	Planet Gear	3		
#14	471-375-8	Cam Ring	1	#48	981-002-0	Ball(1/8)	1	#77	972-033-0	Roller Pin(2.5×8)	3		
#15	471-164-8	Spring Setter	1	Parts for US-LT30A-11 and 30B-11			#78	976-471-0	Spring (Pink-Standard)	1			
#16	471-318-5	Pilot Pin	1	#49	471-287-7	Rotor	1	#79	976-493-0	Spring (Red-Strong)	1		
#17	471-764-7	Notch Pin	1	#50	471-029-7	Gear Casing	1	ACCESSORIES					
#18	471-562-7	Retainer	1	#51	471-460-7	Rotor Gear	1	#80	916-710-0	(+)Double-end Bit (No.2×70) for LT30A	1		
#19	471-257-7	Regulating Screw	1	#52	471-480-7	First Gear Cage	1	#81	916-810-0	(+)Double-end Bit (No.2×75) for LT30B	1		
#20	471-351-6	Bit Sleeve	1	#53	471-445-7	Middle Gear	1	#82	940-113-0	Air Hose Nipple	1		
#21	471-567-6	Bushing	1	#54	471-485-7	Second Gear Cage	1	#83	939-402-0	Manual Driver No.2(45)	1		
#22	471-370-7	Clutch Casing Sleeve	1	#55	471-471-7	Second Planet Gear	6	Optional Silencers					
#23	471-670-7	Band	1	#56	471-483-7	Gear Cage Spacer	1	#84	408-088-2	Silencer Assembly	1		
#24	471-356-7	Bit Band	1	#57	972-033-0	Roller Pin(2.5×8)	6	For Slotted Head Bit and Finder					
#25	462-334-7	Anvil Spacer	1	#58	975-178-0	Spacer(26×10×1.5)	1	#87	471-082-7	Bit Casing Set Screw	1		
#26	401-790-1	Suspension Ring	1	#59	976-472-0	Spring (BLue-Standard)	1	#88	471-057-7	Bit Casing	1		
#27	972-020-0	Roller Pin(2×19.8A)	1	#60	976-493-0	Spring (Red-Weak)	1	#89	916-030-0	(-)Bit(5×56)(6.35H) for LT30B series	1		
#28	970-091-0	Pin(H)(2×4.5)	1	#61	976-471-0	Spring (Pink-Weaker)	1	#90	917-350-0	Finder(7.3×56×24) for LT30B series	1		
#29	973-001-0	Roll Pin(1.5×6)	1	#61-1	976-504-0	Spring (Black-Strong)	1	#91	976-330-0	Spring(13.8×18×0.8)	1		
#30	973-003-0	Roll Pin(1.5×8)	2	Parts for US-LT30A-17 and 30B-17									
#30-1	969-470-0	Pin (E)(2×8)	1	#62	471-287-5	Rotor	1						
#31	976-058-0	Spring(4.5×11)	2	#63	471-029-5	Gear Casing	1						
#32	976-450-0	Spring(18.5×10)	1	#64	471-480-5	Gear Cage	1						
#33	977-157-0	Cone Spring(7×11×20)	1	#65	471-470-5	Planet Gear	3						
#34	978-185-0	Snap Ring(19×1)	1										
#35	978-229-0	Snap Ring(23×1)	1										
#36	981-001-0	Ball(3/32)	17										

When ordering spare parts, please specify tool type, code number and part name.

Printed in Japan



URYU SEISAKU, LTD. Osaka Japan

For further information, please contact at any time your nearest URYU distributor.

OKA-248-08-04-30-3021