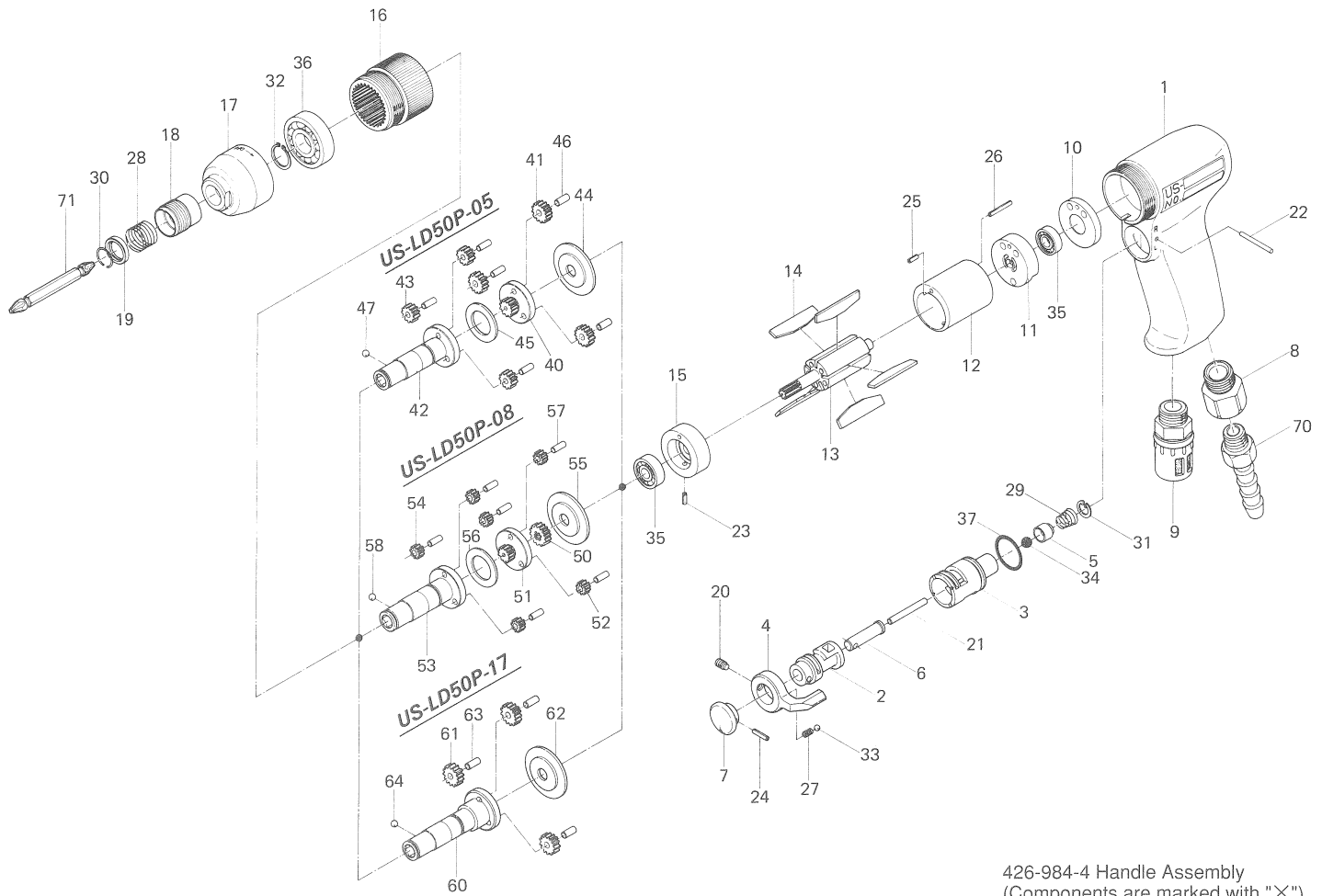


# US-LD50P-SERIES SCREW DRIVERS

## EXPLODED VIEW



426-984-4 Handle Assembly  
(Components are marked with "X")

## PARTS LIST

Index No.	Parts No.	Parts Name	Quantity	Index No.	Parts No.	Parts Name	Quantity	Index No.	Parts No.	Parts Name	Quantity
<b>Common Parts</b>				# 24	973-014-0	x Roll Pin (2x14)	1	<b>Parts for US-LD50P-08</b>			
# 1	426-025-4	x Handle	1	# 25	973-072-0	Roll Pin (2.5x12)	1	# 50	444-460-3	Rotor Gear	1
# 2	480-210-9	x Reverse Valve	1	# 26	973-078-0	Roll Pin (2.5x18)	1	# 51	444-480-3	First Gear Cage	1
# 3	480-211-9	x Reverse Valve Bushing	1	# 27	976-006-0	x Spring (3x5)	1	# 52	444-471-4	First Planet Gear	3
# 4	480-212-8	x Reverse Lever	1	# 28	976-327-0	Spring (13.5x11)	1	# 53	426-350-3	Anvil	1
# 5	480-100-9	x Valve	1	# 29	977-150-0	x Cone Spring (6.8x8.5x8)	1	# 54	444-471-3	Second Planet Gear	3
# 6	480-103-9	x Valve Rod Bushing	1	# 30	978-117-0	Snap Ring (11.7x1.0)	1	# 55	444-807-4	Spacer	1
# 7	426-107-4	x Throttle Trigger	1	# 31	979-002-0	x Inner Snap Ring (9)	1	# 56	444-483-4	Gear Cage Spacer	1
# 8	191-091-5	x Air Inlet Bushing	1	# 32	979-112-0	Outer Snap Ring (15)	1	# 57	972-110-0	Roller Pin (4x10)	6
# 9	235-885-0	Silencer	1	# 33	981-002-0	x Ball (1/8)	1	# 58	981-002-0	Ball (1/8)	1
# 10	426-291-4	Rear Plate Spacer	1	# 34	981-206-0	x Ball (1/4) (Black)	1	<b>Parts for US-LD50P-17</b>			
# 11	444-285-4	Rear Plate	1	# 35	982-014-0	Ball Bearing (607)	2	# 60	426-350-2	Anvil	1
# 12	444-286-4	Cylinder	1	# 36	982-102-0	Ball Bearing (6002)	1	# 61	444-470-4	Planet Gear	3
# 13	426-287-4	Rotor	1	# 37	990-912-0	x O Ring (SNS-14)	1	# 62	444-807-4	Spacer	1
# 14	444-288-4	Blade	5	<b>Parts for US-LD50P-05</b>				# 63	972-111-0	Roller Pin (4x11)	3
# 15	444-289-4	Front Plate	1	# 40	444-480-4	First Gear Cage	1	# 64	981-002-0	Ball (1/8)	1
# 16	426-029-4	Gear Casing	1	# 41	444-470-4	First Planet Gear	3	<b>ACCESSORIES</b>			
# 17	426-070-4	Gear Casing Cover	1	# 42	426-350-4	Anvil	1	# 70	940-114-0	Air Hose Nipple (NPT1/4x3/8)	1
# 18	011-351-1	Bit Sleeve	1	# 43	444-471-4	Second Planet Gear	3	# 71	916-810-0	(+) Double Bit (No.2x75)	1
# 19	011-352-1	Bit Spacer	1	# 44	444-807-4	Spacer	1				
# 20	952-106-0	x Allen Head Dog Point Screw (M4x6)	1	# 45	444-483-4	Gear Cage Spacer	1				
# 21	970-228-0	x Pin (3x28)	1	# 46	972-110-0	Roller Pin (4x10)	6				
# 22	971-123-0	x Pin (2x23)	1	# 47	981-002-0	Ball (1/8)	1				
# 23	973-007-0	Roll Pin (2x7)	1								

When ordering spare parts, please specify tool type, code number and part name.

Printed in Japan



**URYU SEISAKU, LTD.** Osaka Japan