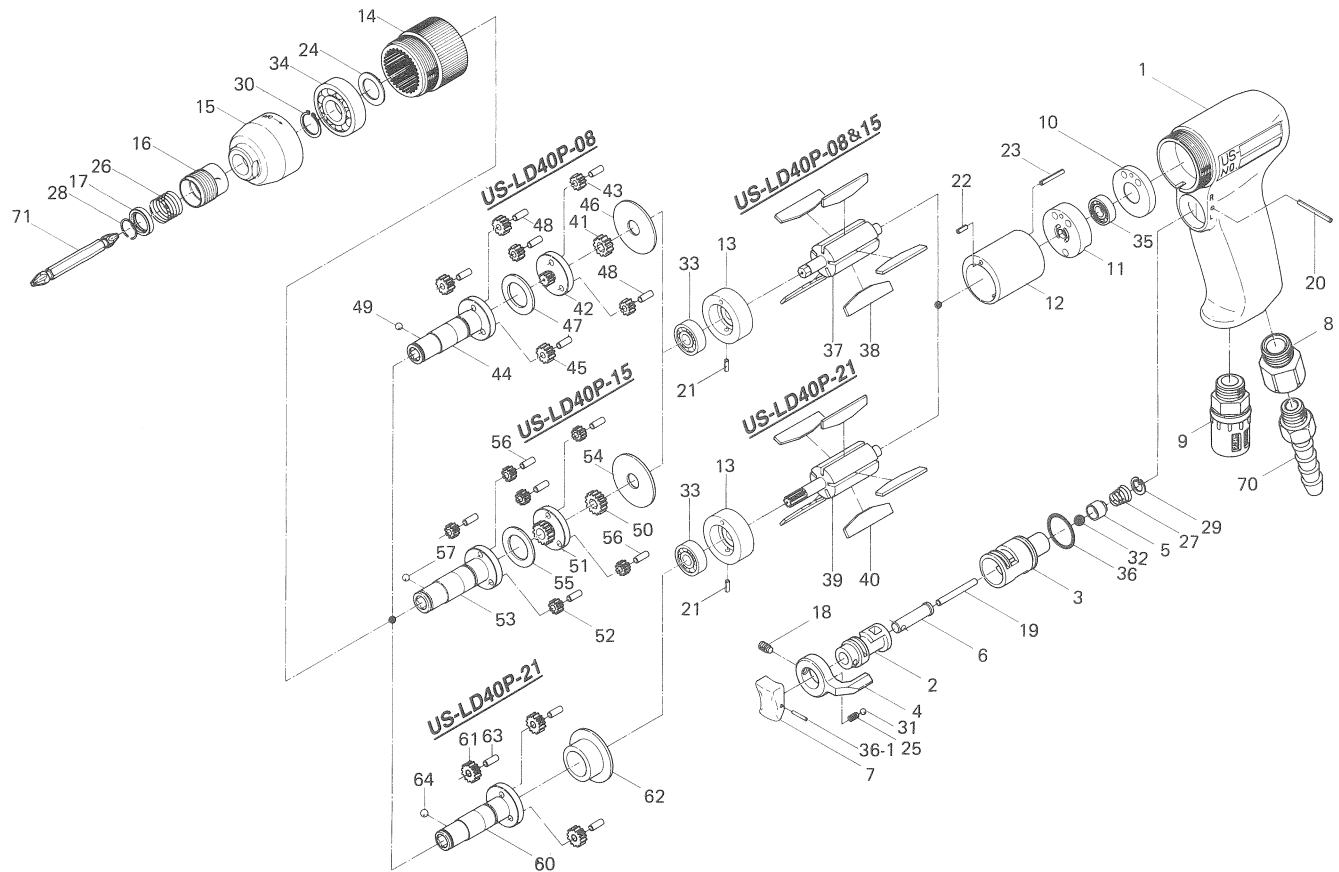


US-LD40P SERIES SCREWDRIVERS

EXPLODED VIEW



PARTS LIST

425-984-3 Handle Assembly
(Casing Components are marked with "X")

Index No.	Code No.	Parts Name	Quantity	Index No.	Code No.	Parts Name	Quantity	Index No.	Code No.	Parts Name	Quantity
Common Parts				#25	976-006-0	× Spring (3×5)	1	#45	472-471-7	Second Planet Gear	3
# 1	425-025-3	× Handle	1	#26	976-327-0	Spring (13.5×11)	1	#46	472-807-7	Spacer	1
# 2	480-210-9	× Reverse Valve	1	#27	977-150-0	× Cone Spring (6.8×8.5×8)	1	#47	496-483-1	Gear Cage Spacer	1
# 3	480-211-9	× Reverse Valve Bushing	1	#28	978-117-0	Snap Ring (11.7×1.0)	1	#48	972-089-0	Roller Pin (3×8)	6
# 4	480-212-8	× Reverse Lever	1	#29	979-002-0	× Inner Snap Ring (9)	1	#49	981-002-0	Ball(1/8)	1
# 5	480-100-9	× Valve	1	#30	979-109-0	Outer Snap Ring (12)	1	Parts for US-LD40P-15			
# 6	480-103-9	× Valve Rod Bushing	1	#31	981-002-0	× Ball (1/8)	1	#50	472-460-5	Rotor Gear	1
# 7	426-107-4	× Throttle Trigger	1	#32	981-206-0	× Ball (1/4) (Black)	1	#51	472-480-5	First Gear Cage	1
# 8	191-091-5	× Air Inlet Bushing	1	#33	982-013-0	Ball Bearing (606)	1	#52	472-470-5	Planet Gear	6
# 9	235-885-0	Silencer Assy	1	#34	982-101-0	Ball Bearing (6001)	1	#53	425-350-3	Anvil	1
#10	425-291-4	Rear Plate Spacer	1	#35	982-033-0	Miniature Ball Bearing (696)	1	#54	472-807-7	Spacer	1
#11	472-285-7	Rear plate	1	#36	990-912-0	× O-Ring (SNS14)	1	#55	496-483-1	Gear Cage Spacer	1
#12	472-286-7	Cylinder	1	#36-1	973-014-0	× Roll Pin (2×14)	1	#56	972-089-0	Roller Pin (3×8)	6
#13	472-289-7	Front Plate	1	Parts for US-LD40P-08 & 15				#57	981-002-0	Ball (1/8)	1
#14	425-029-3	Gear Casing	1	#37	425-287-4	Rotor	1	Parts for US-LD40P-21			
#15	425-070-4	Gear Casing Cover	1	#38	425-288-4	Blade	5	#60	425-350-2	Anvil	1
#16	011-351-1	Bit Sleeve	1	Parts for US-LD40P-21				#61	472-470-3	Planet Gear	3
#17	011-352-1	Bit Spacer	1	#39	425-287-2	Rotor	1	#62	472-807-3	Spacer	1
#18	952-106-0	× Allen Head Dog Point Screw (M4×6)	1	#40	425-288-4	Blade	5	#63	972-089-0	Roller Pin (3×8)	3
#19	970-228-0	× Pin (3×28)	1	Parts for US-LD40P-08				#64	981-002-0	Ball(1/8)	1
#20	971-123-0	× Pin (2×23)	1	#41	472-460-7	Rotor Gear	1	ACCESSORIES			
#21	973-006-0	Roll Pin (2×6)	1	#42	472-480-7	First Gear Cage	1	#70	940-113-0	Air Hose Nipple(NPT1/4×1/4)	1
#22	973-010-0	Roll Pin (2×10)	1	#43	472-470-7	First Planet Gear	3	#71	916-810-0	(+)Double Bit(No.2×75)	1
#23	973-016-0	Roll Pin (2×16)	1	#44	425-350-4	Anvil	1				
#24	975-103-0	Spacer (18×12.1×1)	1								

When ordering spare parts, please specify tool type, code number and part name.

Printed in Japan



URYU SEISAKU, LTD. Osaka Japan

For further information, please contact at any time your nearest URYU distributor.

OKA-279-07-03-30-2019