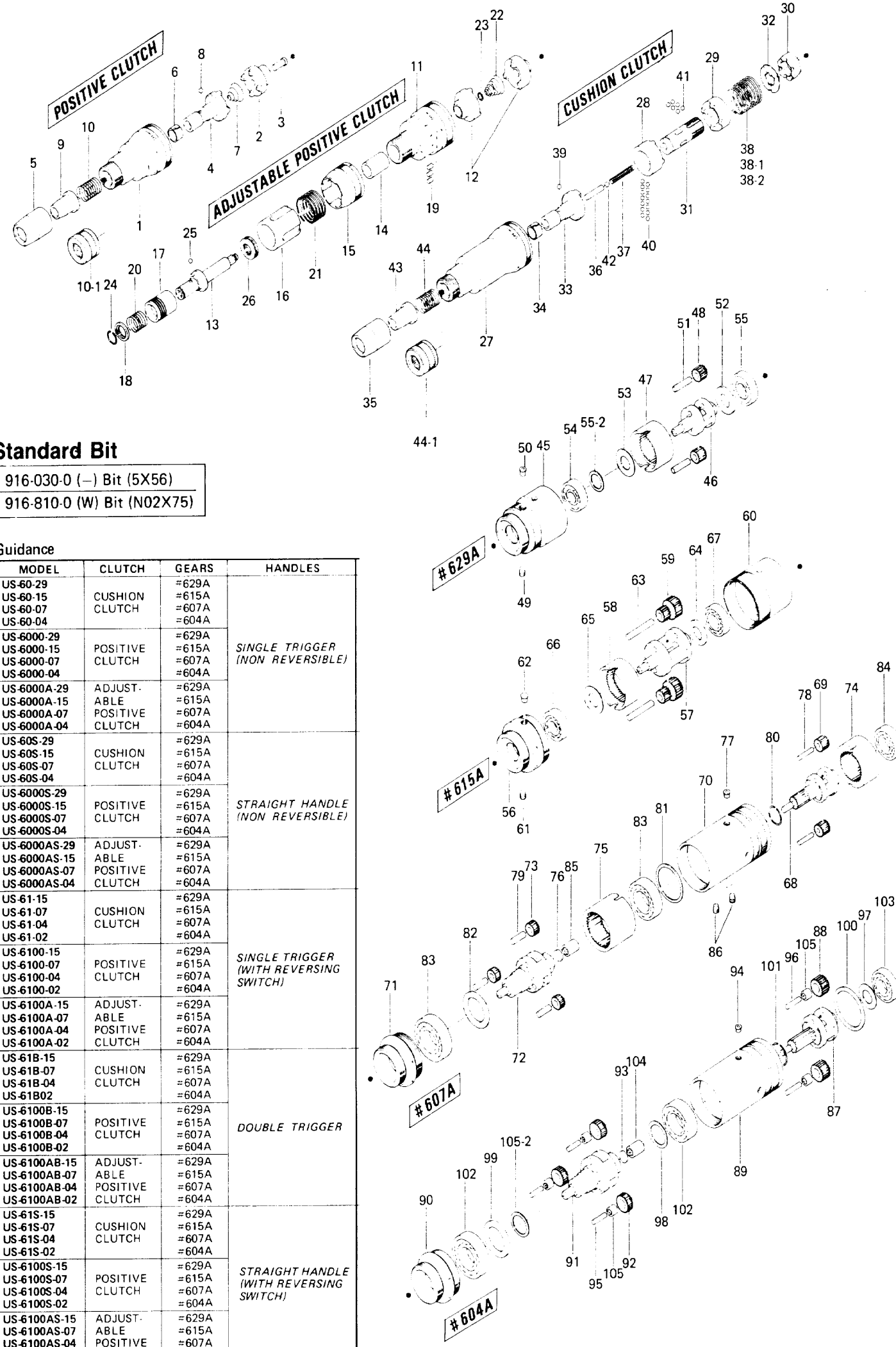
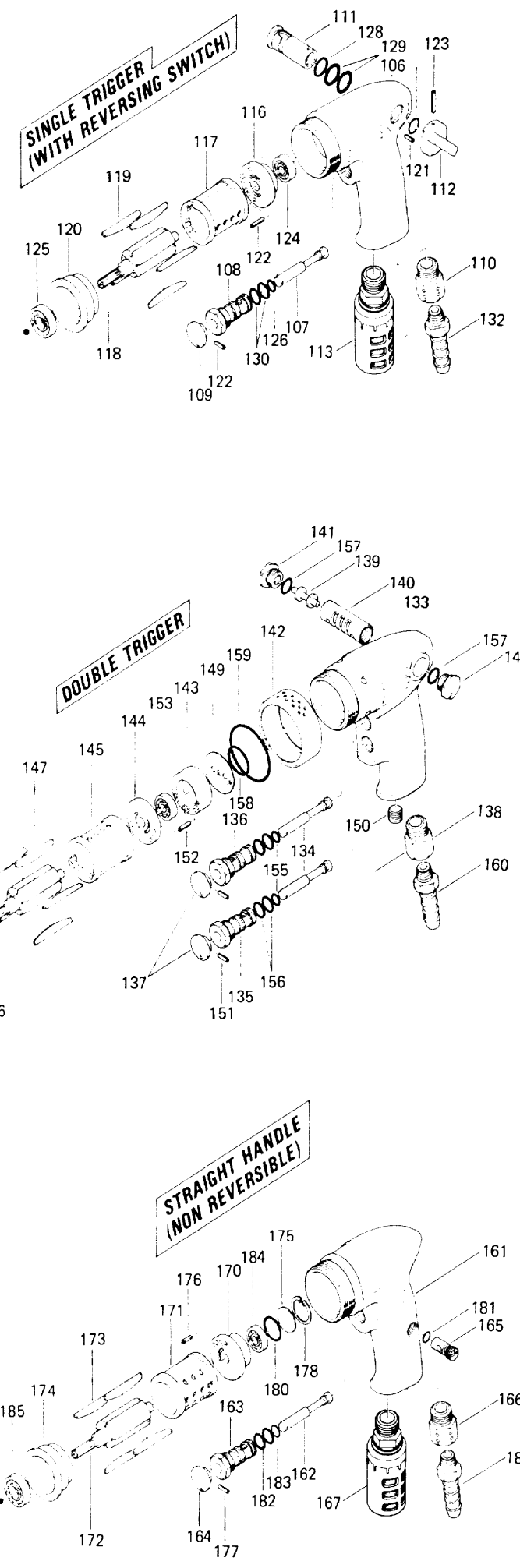
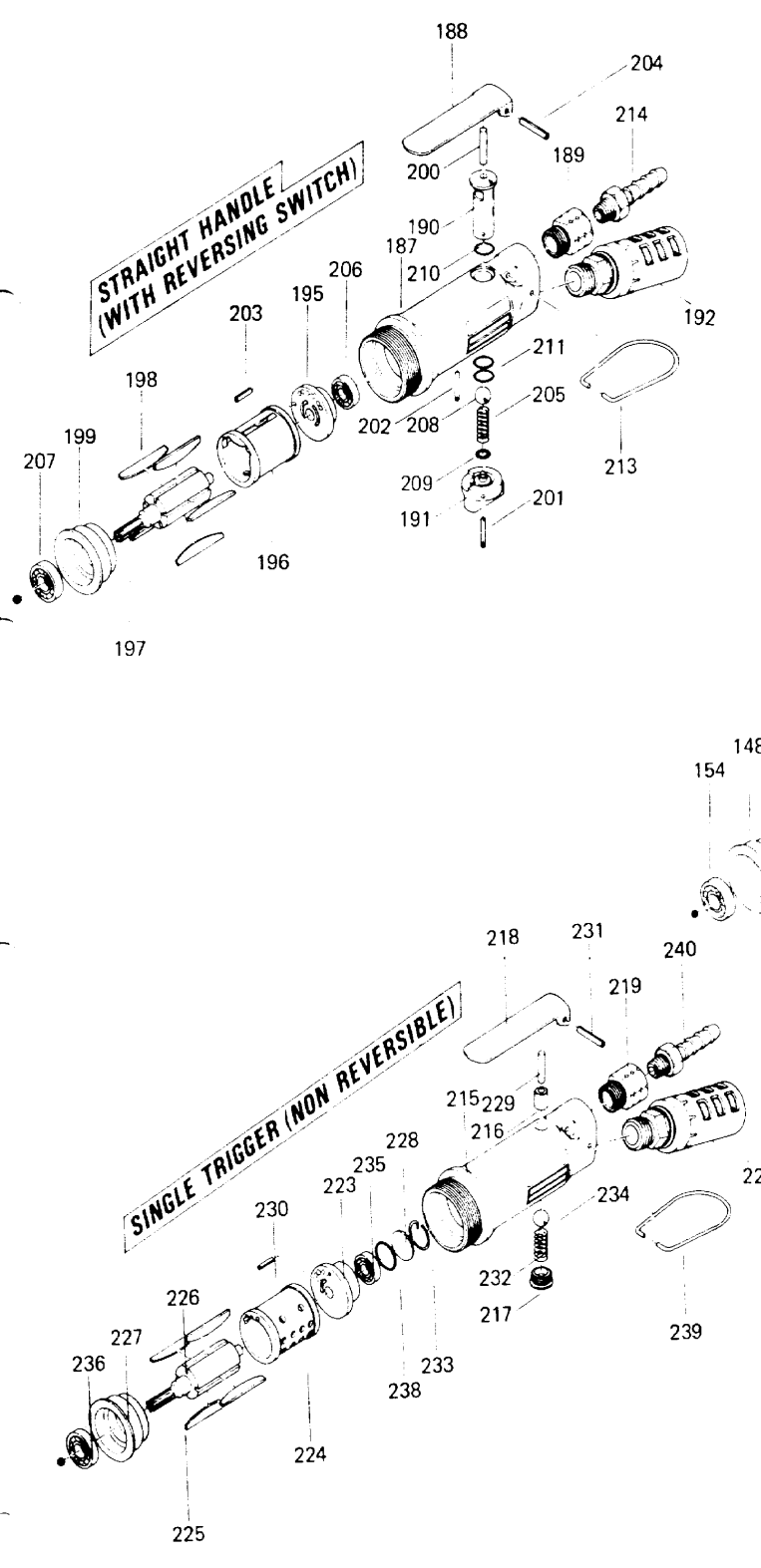


US-60 & 61, US-6000 & 6100, US-6000A & 6100A SERIES SCREW DRIVERS



EXPLODED VIEW



Standard Bit
 916-030-0 (-) Bit (5X56)
 916-810-0 (W) Bit (N02X75)

Guidance

MODEL	CLUTCH	GEARS	HANDLES
US-60-29		=629A	SINGLE TRIGGER (NON REVERSIBLE)
US-60-15	CUSHION CLUTCH	=615A	
US-60-07		=607A	
US-60-04		=604A	
US-6000-29		=629A	SINGLE TRIGGER (NON REVERSIBLE)
US-6000-15	POSITIVE CLUTCH	=615A	
US-6000-07		=607A	
US-6000-04		=604A	
US-6000A-29	ADJUST. POSITIVE CLUTCH	=629A	SINGLE TRIGGER (WITH REVERSING SWITCH)
US-6000A-15	ADJUST. POSITIVE CLUTCH	=615A	
US-6000A-07	ADJUST. POSITIVE CLUTCH	=607A	
US-6000A-04	ADJUST. POSITIVE CLUTCH	=604A	
US-60S-29		=629A	DOUBLE TRIGGER
US-60S-15	CUSHION CLUTCH	=615A	
US-60S-07		=607A	
US-60S-04		=604A	
US-6000S-29		=629A	DOUBLE TRIGGER
US-6000S-15	POSITIVE CLUTCH	=615A	
US-6000S-07		=607A	
US-6000S-04		=604A	
US-6000AS-29	ADJUST. POSITIVE CLUTCH	=629A	DOUBLE TRIGGER
US-6000AS-15	ADJUST. POSITIVE CLUTCH	=615A	
US-6000AS-07	ADJUST. POSITIVE CLUTCH	=607A	
US-6000AS-04	ADJUST. POSITIVE CLUTCH	=604A	
US-61-15		=629A	DOUBLE TRIGGER
US-61-07	CUSHION CLUTCH	=615A	
US-61-04		=607A	
US-61-02		=604A	
US-6100-15		=629A	DOUBLE TRIGGER
US-6100-07	POSITIVE CLUTCH	=615A	
US-6100-04		=607A	
US-6100-02		=604A	
US-6100A-15	ADJUST. POSITIVE CLUTCH	=629A	DOUBLE TRIGGER
US-6100A-07	ADJUST. POSITIVE CLUTCH	=615A	
US-6100A-04	ADJUST. POSITIVE CLUTCH	=607A	
US-6100A-02	ADJUST. POSITIVE CLUTCH	=604A	
US-61B-15		=629A	DOUBLE TRIGGER
US-61B-07	CUSHION CLUTCH	=615A	
US-61B-04		=607A	
US-61B02		=604A	
US-6100B-15		=629A	DOUBLE TRIGGER
US-6100B-07	POSITIVE CLUTCH	=615A	
US-6100B-04		=607A	
US-6100B-02		=604A	
US-6100AB-15	ADJUST. POSITIVE CLUTCH	=629A	DOUBLE TRIGGER
US-6100AB-07	ADJUST. POSITIVE CLUTCH	=615A	
US-6100AB-04	ADJUST. POSITIVE CLUTCH	=607A	
US-6100AB-02	ADJUST. POSITIVE CLUTCH	=604A	
US-61S-15		=629A	DOUBLE TRIGGER
US-61S-07	CUSHION CLUTCH	=615A	
US-61S-04		=607A	
US-61S-02		=604A	
US-6100S-15		=629A	DOUBLE TRIGGER
US-6100S-07	POSITIVE CLUTCH	=615A	
US-6100S-04		=607A	
US-6100S-02		=604A	
US-6100AS-15	ADJUST. POSITIVE CLUTCH	=629A	DOUBLE TRIGGER
US-6100AS-07	ADJUST. POSITIVE CLUTCH	=615A	
US-6100AS-04	ADJUST. POSITIVE CLUTCH	=607A	
US-6100AS-02	ADJUST. POSITIVE CLUTCH	=604A	

US-60 & 61, US-6000 & 6100, US-6000A & 6100A SERIES

SCREW DRIVERS

PARTS LIST

Index No.	Code Number	Part Name	Quantity	Index No.	Code Number	Part Name	Quantity	Index No.	Code Number	Part Name	Quantity
POSITIVE CLUTCH				# 75	612-466-6	Second Internal Gear	1	#155	990-203-0	O Ring (JW1516-3)	1
# 1	483-039-6	Hammer Casing	1	# 76	612-414-1	Front Cover	1	#156	990-610-0	O Ring (8x2)	4
# 2	483-339-6	Positive Clutch	1	# 77	968-130-0	Grease Cup (3/16)	1	#157	990-908-0	O Ring (SNS-10)	2
# 3	483-317-6	Hammer Pin	1	# 78	972-119-0	Needle Roller (4x18)	2	#158	990-925-0	O Ring (SNS-32)	1
# 4	483-319-6	Anvil	1	# 79	972-167-0	Needle Roller (5x17)	3	#159	990-040-0	O Ring (P-42)	1
# 5	430-057-1	Bit Casing	1	# 80	978-202-0	Snap Ring (20x1.0)	1	#160	940-114-0	Air Hose Nipple (NPT 1/4x3/8)	1
# 6	430-356-1	Bit Band	1	# 81	975-269-0	Spacer (35x30x1)	1	SINGLE TRIGGER (NON-REVERSIBLE) 612-004-0 Handle Assembly			
# 7	977-254-0	Cone Spring (10x15x16)	1	# 82	975-250-0	Spacer (35.5x21.2x1)	1	* Assembly components are marked with "O"			
# 8	981-002-0	Ball (1/8)	1	# 83	982-103-0	Ball Bearing (6003)	1	#161	612-025-0	Casing	1
# 9	917-400-0	Finder (5x56x23)	1	# 84	982-403-0	Ball Bearing (EE-4)	1	#162	603-100-2	Valve	1
# 10	976-358-0	Spring (14.4x26)	1	# 85	988-004-0	Needle Roller Bearing (NK 5/12)	1	#163	606-101-1	Valve Bushing	1
# 10-1	478-057-0	Bit Holder Guide	1	# 86	952-204-0	Allen Head Dog Point Screw (M5x5L)	2	#164	603-107-2	Throttle Trigger	1
ADJUSTABLE POSITIVE CLUTCH				# 86-2	937-065-0	Spanner (4.8x22x153)	1	#165	023-240-1	Regulator Valve	1
# 11	482-039-2	Anvil Casing	1	(604A) 477-005-2 Gear Box Assembly				#166	612-091-0	Air Inlet Bushing	1
# 12	482-339-2	Positive Clutch	2	# 87	612-480-0	Gear Cage	2	#167	018-885-7	Silencer Assembly	1
# 13	482-319-3	Anvil	1	# 88	612-470-0	Planet Gear	1	#170	600-285-2	Rear Plate	1
# 14	482-328-2	Anvil Bushing	1	# 89	612-029-9	Gear Casing	1	#171	600-286-1	Cylinder	1
# 15	482-242-2	Adjusting Dial	1	# 90	478-070-3	Gear Casing Cover	1	#172	612-287-0	Rotor	1
# 16	482-257-2	Adjusting Screw	1	# 91	477-485-2	Second Gear Cage	1	#173	600-288-1	Blade	4
# 17	011-351-3	Bit Sleeve	1	# 92	612-471-0	Second Planet Gear	3	#174	612-289-0	Front Plate	1
# 18	011-352-1	Bit Spacer	1	# 93	612-414-1	Front Cover	1	#175	600-291-1	Rear Plate Spacer	1
# 19	970-202-0	Pin (H) (3x4.5)	3	# 94	968-130-0	Grease Cup (3/16)	1	#176	973-006-0	Roll Pin (2x6)	1
# 20	976-327-0	Spring (13.5x11)	1	# 95	972-115-0	Needle Roller (4x16.5)	3	#177	973-010-0	Roll Pin (2x10)	1
# 21	976-537-0	Spring (23x19)	1	# 96	972-117-0	Needle Roller (4x17)	2	#178	978-231-0	Snap Ring (23x1.2)	1
# 22	977-260-0	Cone Spring (10x16x16)	1	# 97	975-136-0	Spacer (22x13.7x0.6)	1	#180	990-914-0	O Ring (SNS-16)	1
# 23	979-103-0	Outer Snap Ring (6)	1	# 98	975-172-0	Spacer (24x18x1)	1	#181	990-003-0	O Ring (P-5)	1
# 24	978-117-0	Snap Ring (11.7x1.0)	1	# 99	975-250-0	Spacer (32.5x21.2x1)	1	#182	990-610-0	O Ring (8x2)	2
# 25	981-003-0	Ball (5/32)	1	#100	975-294-0	Spacer (38x29x2)	1	#183	990-203-0	O Ring (JW1516-3)	1
# 26	986-400-0	Thrust Ball Bearing (T10-18)	1	#101	978-202-0	Snap Ring (20x1)	1	#184	982-401-0	Ball Bearing (EE-2)	1
CUSHION CLUTCH				#102	982-103-0	Ball Bearing (6003)	2	#185	982-402-0	Ball Bearing (EE-3)	1
# 27	478-028-0	Hammer Casing	1	#103	982-403-0	Ball Bearing (EE-4)	1	#186	940-114-0	Air Hose Nipple (NPT 1/4x3/8)	1
# 28	430-364-1	Driven Clutch	1	#104	988-004-0	Needle Roller Bearing (NK 5/12)	1	STRAIGHT HANDLE (WITH REVERSING SWITCH) 486-004-5 Handle Assembly			
# 29	430-365-1	Hammer	1	#105	988-450-0	Needle Roller Bearing (HK-0408)	5	* Assembly components are marked with "O"			
# 30	430-362-1	Adjusting Nut	1	#105-2	975-789-0	Adjusting Spacer (22x17xt)	1	#187	486-025-5	Casing	1
# 31	431-360-1	Hammer Shank	1	#105-3	937-065-0	Spanner (4.8x22x153)	1	#188	500-107-1	Valve Lever	1
# 32	430-347-1	Adjusting Nut Lock Washer	1	SINGLE TRIGGER (WITH REVERSING SWITCH) 478-004-0 Handle Assembly				#189	612-091-0	Air Inlet Bushing	1
# 33	478-319-0	Anvil	1	* Assembly components are marked with "O"				#190	418-210-1	Reverse Valve	1
# 34	430-356-1	Bit Band	1	#106	478-025-0	Casing	1	#191	418-212-1	Reverse Lever	1
# 35	430-057-1	Bit Casing	1	#107	603-100-2	Valve	1	#192	018-885-7	Silencer Assembly	1
# 36	478-318-0	Pilot Pin	1	#108	606-101-1	Valve Bushing	1	#195	418-285-1	Rear Plate	1
# 37	976-069-0	Spring (4.9x22)	1	#109	603-107-2	Throttle Trigger	1	#196	418-286-1	Cylinder	1
#38	976-539-0	Spring (Standard)	1	#110	191-091-5	Air Inlet Bushing	1	#197	478-287-0	Rotor	1
#38-1	976-538-0	Spring (Weak)	1	#111	432-210-1	Reverse Valve	1	#198	600-288-1	Blade	5
#38-2	976-540-0	Spring (Strong)	1	#112	418-212-1	Reverse Lever	1	#199	612-289-0	Front Plate	1
# 39	981-002-0	Ball (1/8)	1	#113	026-885-7	Silencer Assembly	1	#200	970-321-0	Pin (H) (4x21)	1
# 40	981-002-0	Ball (1/8)	14	#116	418-285-1	Rear Plate	1	#201	973-022-0	Roll Pin (2x22)	1
# 41	981-003-0	Ball (5/32)	6	#117	418-286-1	Cylinder	1	#202	973-006-0	Roll Pin (2x6)	1
# 42	981-004-0	Ball (3/16)	1	#118	478-287-0	Rotor	1	#203	973-010-0	Roll Pin (2x10)	1
# 43	917-400-0	Finder (5x56x23)	1	#119	600-288-1	Blade	5	#204	973-124-0	Roll Pin (3x24)	1
# 44	976-358-0	Spring (14.4x26)	1	#120	612-289-0	Front Plate	1	#205	976-151-0	Spring (7x16)	1
# 44-1	478-057-0	Bit Holder Guide	1	#121	973-006-0	Roller Pin (2x6)	1	#206	982-401-0	Ball Bearing (EE-2)	1
(629A) 478-005-0 Gear Box Assembly				#122	973-010-0	Roller Pin (2x10)	2	#207	982-402-0	Ball Bearing (EE-3)	1
# 45	478-029-0	Gear Casing	1	#123	973-022-0	Roller Pin (2x22)	1	#208	981-207-0	Ball (9/32)	1
# 46	478-480-0	Gear Cage	1	#124	982-401-0	Ball Bearing (EE-2)	1	#209	990-003-0	O Ring (P-5)	1
# 47	612-465-8	Internal Gear	1	#125	982-402-0	Ball Bearing (EE-3)	1	#210	990-007-0	O Ring (P-9)	1
# 48	612-470-5	Planet Gear	2	#126	990-203-0	O Ring (JW1516-3)	1	#211	990-014-0	O Ring (P-14)	2
# 49	312-757-1	Internal Gear Set Screw	1	#127	990-003-0	O Ring (P-5)	1	#212	010-790-1	Suspension Bail	1
# 50	968-130-0	Grease Cup (3/16)	1	#128	990-007-0	O Ring (P-9)	1	#214	940-114-0	Air Hose Nipple (NPT 1/4x3/8)	1
# 51	972-164-0	Needle Roller (5x20)	2	#129	990-014-0	O Ring (P-14)	2	STRAIGHT HANDLE (NON-REVERSIBLE) 617-004-7 Handle Assembly			
# 52	975-138-0	Spacer (22x13.7x2)	1	#130	990-610-0	O Ring (8x2)	2	* Assembly components are marked with "O"			
# 53	975-162-0	Spacer (24x12.5x0.4)	1	#132	940-114-0	Air Hose Nipple (NPT 1/4x3/8)	1	#215	617-025-7	Casing	1
# 54	982-100-0	Ball Bearing (6000)	1	DOUBLE TRIGGER 679-004-7 Handle Assembly				#216	553-103-1	Valve Rod Bushing	1
# 55	982-403-0	Ball Bearing (EE-4)	1	* Assembly components are marked with "O"				#217	201-108-1	Valve Plug	1
# 55-2	975-757-0	Adjusting Spacer (18x13xt)	1	#133	679-025-7	Handle	1	#218	500-107-1	Valve Lever	1
# 55-3	937-065-0	Spanner (4.8x22x153)	1	#134	040-100-1	Valve	2	#219	612-091-0	Air Inlet Bushing	1
(615A) 477-005-0 Gear Box Assembly				#135	606-101-1	Valve Bushing	1	#220	018-885-7	Silencer Assembly	1
# 56	477-029-0	Gear Casing	1	#136	040-101-1	Valve Bushing	1	#223	600-285-2	Rear Plate	1
# 57	477-480-0	Gear Cage	1	#137	603-107-2	Throttle Trigger	2	#224	600-286-1	Cylinder	1
# 58	612-465-7	Internal Gear	1	#138	191-091-5	Air Inlet Bushing	1	#225	612-287-0	Rotor	1
# 59	612-470-3	Planet Gear	2	#139	679-210-7	Reverse Lever	1	#226	600-288-1	Blade	4
# 60	612-035-3	Casing Connector	1	#140	679-211-8	Reverse Lever Bushing	1	#227	612-289-0	Front Plate	1
# 61	952-205-0	Allen Head Dog Point Screw (M5x5)	1	#141	040-214-2	Reverse Lever Cover	2	#228	600-291-1	Rear Plate Spacer	1
# 62	968-130-0	Grease Cup (3/16)	1	#142	679-782-7	Exhaust Deflector	1	#229	970-321-0	Pin (H) (4x21)	1
# 63	972-174-0	Needle Roller (5x32)	2	#143	679-291-7	Rear Plate Spacer	1	#230	973-006-0	Roll Pin (2x6)	1
# 64	975-138-0	Spacer (22x13.7x2)	1	#144	679-285-7	Rear Plate	1	#231	973-124-0	Roll Pin (3x24)	1
# 65	975-162-0	Spacer (24x12.5x0.4)	1	#145	418-286-1	Cylinder	1	#232	977-154-0	Cone Spring (7x7.5x17)	1
# 66	982-100-0	Ball Bearing (6000)	1	#146	478-287-0	Rotor	1	#233	978-231-0	Snap Ring (23x1.2)	1
# 67	982-403-0	Ball Bearing (EE-4)	1	#147	600-288-1	Blade	5	#234	981-030-0	Ball (3/8)	1
# 67-2	937-065-0	Spanner (4.8x22x153)	1	#148	612-289-0	Front Plate	1	#235	982-401-0	Ball Bearing (EE-2)	1
(607A) 477-005-3 Gear Box Assembly				#149	679-809-7	Rear Packing	1	#236	982-402-0	Ball Bearing (EE-3)	1
# 68	612-480-6	Gear Cage	1	#150	966-100-0	Allen Head Plug (1/8)	1	#238	990-914-0	O Ring (SNS-16)	1
# 69	612-470-1	First Planet Gear	2	#151	973-010-0	Roll Pin (2x10)	2	#239	010-790-1	Suspension Bail	1
# 70	612-029-6	Gear Casing	1	#152	973-022-0	Roll Pin (2x22)	1	#240	940-114-0	Air Hose Nipple (NPT 1/4x3/8)	1
# 71	478-070-3	Gear Casing Cover	1	#153	982-401-0	Ball Bearing (EE-2)	1				
# 72	477-485-3	Second Gear Cage	1	#154	982-402-0	Ball Bearing (EE-3)	1				
# 73	612-471-1	Second Planet Gear	3								
# 74	612-465-6	First Internal Gear	1								

When ordering spare parts, please specify tool type, code number and part name.

Printed in Japan