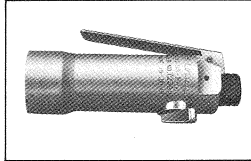


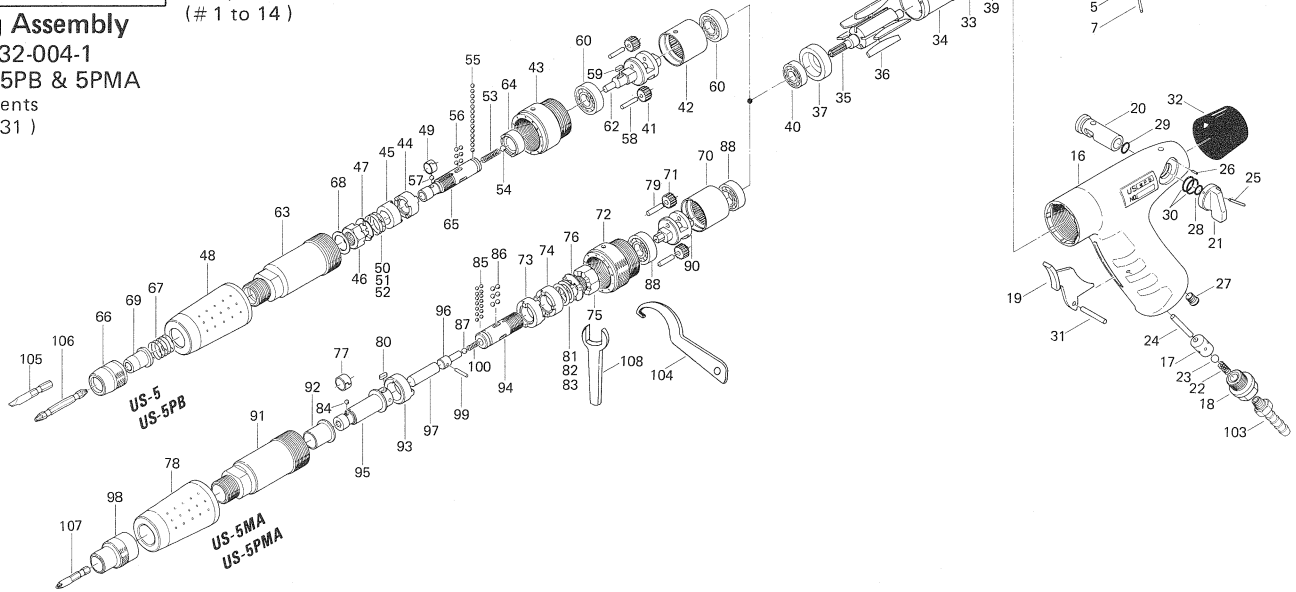
US-5 SERIES SCREW DRIVERS

EXPLODED VIEW



Casing Assembly
Code 418-004-1
for US-5 & 5MA
Components
(# 1 to 14)

Casing Assembly
Code 432-004-1
for US-5PB & 5PMA
Components
(#16 to 31)



PARTS LIST

Index No.	Code No.	Part Name	Quantity	Index No.	Code No.	Part Name	Quantity	Index No.	Code No.	Part Name	Quantity
418-004-1 Casing Assembly (Straight type) for US-5 & US-5MA				#36	600-288-1	Blade	5	#74	430-365-1	Hammer	1
(components are made with "O")				#37	418-289-1	Front Plate	1	#75	430-362-1	Adjusting Nut	1
#1	418-025-1	O Casing	1	#38	971-111-0	Pin (2x11)	2	#76	430-347-1	Adjusting Nut Lock Washer	1
#2	418-107-1	O Valve Lever	1	#39	982-401-0	Ball Bearing (EE-2)	1	#77	430-356-1	Bit Band	1
#3	418-091-1	O Air Inlet Bushing	1	#40	982-402-0	Ball Bearing (EE-3)	1	#78	430-782-1	Exhaust Deflector	1
#4	418-210-1	O Reverse Valve	1	Parts for US-5 & US-5PB				#79	972-119-0	Needle Roller (4x18)	2
#5	418-212-1	O Reverse Lever	1	#41	600-470-1	Planet Gear	2	#80	974-005-0	Key (3x6)	1
#6	970-321-0	O Pin (H)	1	#42	418-465-1	Internal Gear	1	#81	976-538-0	Spring (23x13.5) (Weak)	1
#7	973-022-0	O Roll Pin (2x22)	1	#43	430-036-1	Hammer Casing Connector	1	#82	976-539-0	Spring (23x13.5) (Standard)	1
#8	973-006-0	O Roll Pin (2x6)	1	#44	430-364-1	Driven Clutch	1	#83	976-540-0	Spring (23x13.5) (Strong)	1
#9	973-124-0	O Roll Pin (3x24)	1	#45	430-365-1	Hammer	1	#84	981-002-0	Ball (1/8)	1
#10	976-151-0	Spring (7x16)	1	#46	430-362-1	Adjusting Nut	1	#85	981-002-0	Ball (1/8)	14
#11	981-207-0	O Ball (9/32)	1	#47	430-347-1	Adjusting Nut Lock Washer	1	#86	981-003-0	Ball (5/32)	6
#12	990-003-0	O Ring (P-5)	1	#48	430-782-1	Exhaust Deflector	1	#87	981-004-0	Ball (3/16)	1
#13	990-007-0	O Ring (P-9)	1	#49	430-356-1	Bit Band	1	#88	982-403-0	Ball Bearing (EE-4)	2
#14	990-014-0	O Ring (P-14)	2	#50	976-538-0	Spring (23x13.5) (Weak)	1	#90	419-480-1	Gear Cage	1
#15	010-790-1	Suspension Ring	1	#51	976-539-0	Spring (23x13.5) (Standard)	1	#91	431-028-1	Hammer Casing Anvil Bushing	1
432-004-1 Casing Assembly (Pistol type) for US-5PB & US-5PMA				#52	976-540-0	Spring (23x13.5) (Strong)	1	#92	431-328-1	Hammer Casing Anvil Bushing	1
(components are made with "x")				#53	976-070-0	Spring (4.9x28)	1	#93	431-366-1	Driving Clutch	1
#16	432-025-2	X Casing	1	#54	981-004-0	Ball (3/16)	1	#94	431-360-1	Hammer Shank	1
#17	010-102-1	X Valve Bushing	1	#55	981-002-0	Ball (1/8)	14	#95	431-319-1	Anvil	1
#18	432-091-1	X Air Inlet Bushing	1	#56	981-003-0	Ball (5/32)	6	#96	419-330-1	Anvil Rear Plate	1
#19	705-107-1	X Throttle Trigger	1	#57	981-002-0	Ball (1/8)	1	#97	419-704-1	Magnet	1
#20	432-210-1	X Reverse Valve	1	#58	972-119-0	Needle Roller (4x18)	2	#98	431-382-1	Hammer Casing Nut	1
#21	418-212-1	X Reverse Lever	1	#59	974-005-0	Key (3x6)	1	#99	970-214-0	Pin (H) (3x14)	1
#22	976-151-0	X Spring (7x16)	1	#60	982-403-0	Ball Bearing (EE-4)	2	#100	976-069-0	Spring (4.9x22)	1
#23	981-207-0	X Ball (9/32)	1	#62	418-480-1	Gear Cage	1	Parts marked with "Δ" are at the User's option.			
#24	970-228-0	X Pin (3x28)	1	#63	430-028-1	Hammer Casing Driving Clutch	1	Accessories			
#25	973-022-0	X Roll Pin (2x22)	1	#64	430-366-1	Hammer Shank	1	#101	932-110-0	Air Regulator (U 1/4")	1
#26	973-006-0	X Roll Pin (2x6)	1	#65	430-360-1	Hammer Shank	1	#102	934-110-0	Air Hose Assembly (1/4")	1
#27	966-100-0	X Allen Head Plug (1/8)	1	#66	430-057-1	Bit Casing	1	#103	940-113-0	Air Hose Nipple (NPT 1/4"x1/4")	1
#28	990-003-0	X O Ring (P-5)	1	#67	976-358-0	Spring (14.4x26)	1	#104	937-003-0	Spanner (4x19x150)	1
#29	990-007-0	X O Ring (P-9)	1	#68	975-120-0	Spacer (20x12.5x1)	1	For US-5 & US-5PB			
#30	990-014-0	X O Ring (P-14)	2	#69	917-400-0	Finder (5x56x23)	1	#105	916-030-0	(-) Bit (5x56)	1
#31	973-116-0	X Roll Pin (3x16)	1	Parts for US-5MA & US-5PMA				#106	916-810-0	(+) Double Bit (No.2x75)	1
#32	432-842-1	Casing Protector	1	#70	418-465-1	Internal Gear	1	For US-5MA & US-5PMA			
Common Parts				#71	600-470-1	Planet Gear	2	#107	916-550-0	(+) Bit (No.2x40)	1
#33	418-285-1	Rear Plate	1	#72	430-036-1	Hammer Casing Connector	1	#108	936-003-0	Spanner (22x4.76x170)	1
#34	418-286-1	Cylinder	1	#73	430-364-1	Driven Clutch	1				
#35	418-287-1	Rotor	1								

When ordering spare parts, please specify tool type, code number and part name.

Printed in Japan



URYU SEISAKU, LTD. Osaka, Japan