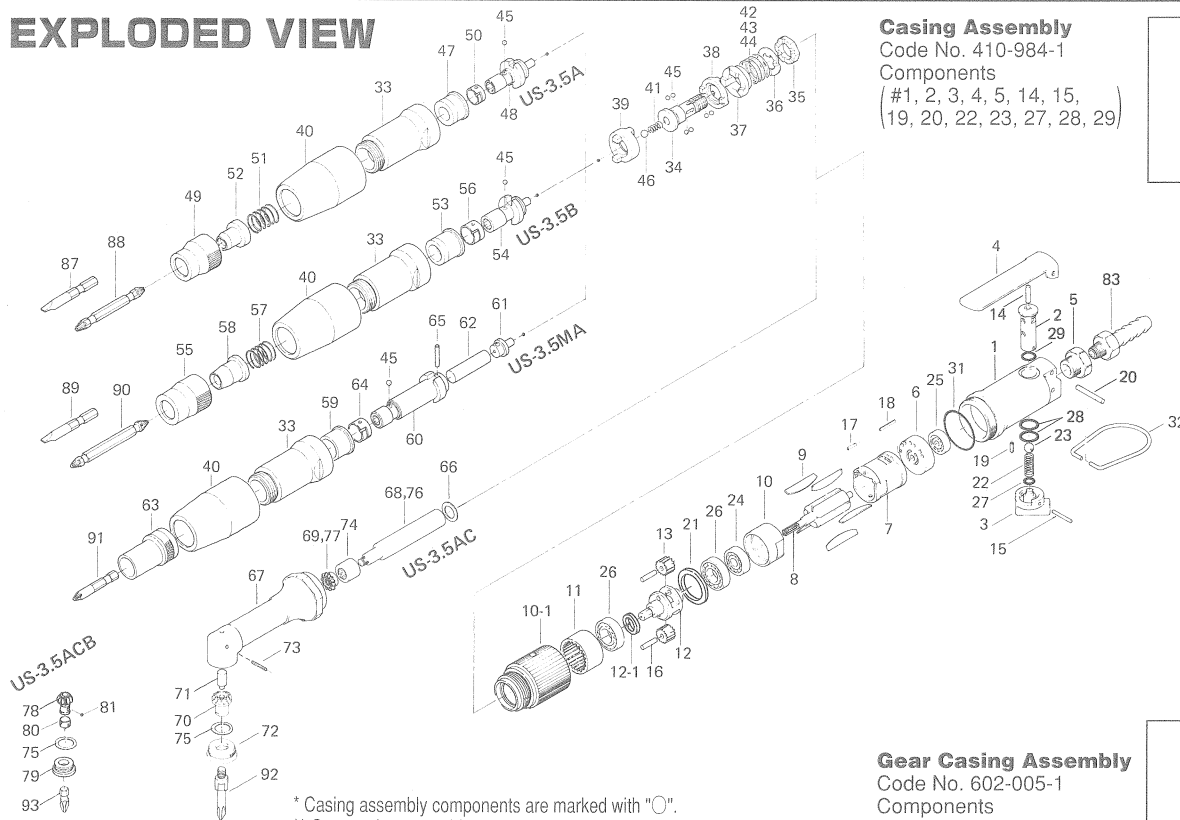


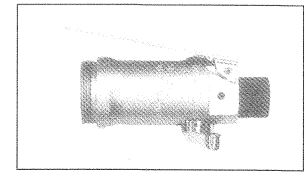
# US-3.5 SERIES SCREW DRIVERS

## EXPLODED VIEW



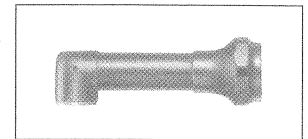
### Casing Assembly

Code No. 410-984-1  
Components  
(#1, 2, 3, 4, 5, 14, 15,  
19, 20, 22, 23, 27, 28, 29)



### Gear Casing Assembly

Code No. 602-005-1  
Components



\* Casing assembly components are marked with "O".  
\*\* Gear casing assembly components for US-3.5AC are marked with "Δ".  
\*\*\* Gear casing assembly components for US-3.5ACB are marked with "X".

## PARTS LIST

Index No.	Code No.	Parts Name	Quantity	Index No.	Code No.	Parts Name	Quantity	Index No.	Code No.	Parts Name	Quantity
<b>Common Parts</b>				#34	410-360-1	Hammer Shank	1	<b>PARTS FOR US-3.5AC</b>			
# 1	410-025-1	O Casing	1	#35	410-362-1	Adjusting Nut	1	#66	975-049-0	Spacer(14x9x0.3)	1
# 2	410-210-1	O Reverse Valve	1	#36	418-347-1	Adjusting Nut Lock Washer	1	#67	602-034-1	ΔX Middle Shaft Casing	1
# 3	410-212-1	O Reverse Lever	1	#37	410-365-1	Hammer	1	#68	602-500-1	Middle Shaft	1
# 4	500-107-1	O Valve Lever	1	#38	410-364-1	Driven Clutch	1	#69	602-420-1	Driving Gear	1
# 5	408-091-2	O Air Inlet Bushing	1	#39	410-366-1	Clutch	1	#70	602-430-1	Δ Middle Shaft Casing Front Plate	1
# 6	410-285-1	Rear Plate	1	#40	410-782-1	Exhaust Deflector	1	#71	602-431-1	ΔX Driven Gear Spindle	1
# 7	410-286-1	Cylinder	1	#41	976-058-0	Spring(4.5x11)	1	#72	602-075-1	Δ Middle Shaft Casing Front Plate	1
# 8	410-287-1	Rotor	1	#42	976-470-0	Spring(19.8x14)(Weak)	1	#73	953-104-0	ΔX Allen Head Flat Point Screw(M4x4)	1
# 9	410-288-1	Blade	5	#43	976-485-0	Spring(20.2x14)(Standard)	1	#74	602-455-1	Middle Shaft Bushing	1
#10	410-289-1	Front Plate	1	#44	976-486-0	Spring(20.6x14)(Strong)	1	#75	975-760-0	ΔX Adjusting Spacer(20x17xt)	1
#10-1	410-029-1	Gear Casing	1	#45	981-002-0	Ball(1/8)	7	<b>PARTS FOR US-3.5ACB</b>			
#11	413-465-1	Internal Gear	1	#46	981-004-0	Ball(3/16)	1	#76	412-500-4	Middle Shaft	1
#12	410-480-1	Gear Cage	1	<b>PARTS FOR US-3.5A</b>				#77	412-420-4	Driving Gear	1
#12-1	602-483-1	Gear Cage Spacer	1	#47	414-328-1	Anvil Bushing	1	#78	412-430-4	X Driven Gear	1
#13	410-470-1	Planet Gear	2	#48	410-319-2	Anvil	1	#79	412-075-4	X Middle Shaft Casing Front Plate	1
#14	970-213-0	O Pin(H)(3x13)	1	#49	410-057-1	Bit Casing	1	#80	430-356-1	X Bit Band	1
#15	971-117-0	O Pin(2x17)	1	#50	418-356-1	Bit Band	1	#81	981-002-0	X Ball(1/8)	1
#16	972-093-0	Needle Roller(3x13)	2	#51	976-358-0	Spring(14.4x26)	1	<b>ACCESSORIES</b>			
#17	973-001-0	Roll Pin(1.5x6)	1	#52	917-300-0	Finder(4x51x19)	1	#82	932-110-0	Air Regulator(U1/4)	1
#18	973-002-0	Roll Pin(1.5x15)	1	<b>PARTS FOR US-3.5B</b>				#83	940-113-0	Air Hose Nipple(NPT1/4x1/4)	1
#19	973-006-0	O Roll Pin(2x6)	1	#53	414-328-1	Anvil Bushing	1	#84	936-002-0	Spanner(26x4x130)	1
#20	973-124-0	O Roll Pin(3x24)	1	#54	414-319-1	Anvil	1	#85	937-002-0	Spanner(3.8x17x145)	1
#21	413-494-1	Internal Gear Gear Spacer	1	#55	414-057-1	Bit Casing	1	#86	936-512-0	Spanner(12)	1
#22	976-113-0	O Spring(6x16)	1	#56	430-356-1	Bit Band	1	#87	916-020-0	(-)Bit(4x51) for US-3.5A	1
#23	981-206-0	O Ball(1/4)Black	1	#57	976-358-0	Spring(14.4x26)	1	#88	916-710-0	(+)Double Bit(No.2x70) for US-3.5A	1
#24	982-021-0	Ball Bearing(626)	1	#58	917-400-0	Finder(5x56x23)	1	#89	916-030-0	(-)Bit(5x56) for US-3.5B	1
#25	982-026-0	Ball Bearing(634)	1	<b>PARTS FOR US-3.5MA</b>				#90	916-810-0	(+)Double Bit(No.2x75) for US-3.5B	1
#26	982-402-0	Ball Bearing(EE-3)	2	#59	411-328-1	Anvil Bushing	1	#91	916-550-0	(+)Bit(No.2x40) for US-3.5MA	1
#27	990-002-0	O O-Ring(P-4)	1	#60	411-319-1	Anvil	1	#92	916-610-0	(+)Bit(No.2x30) for US-3.5AC	1
#28	990-008-0	O O-Ring(P-10)	2	#61	411-330-1	Anvil Rear Plate	1	#93	916-510-0	(+)Bit(No.2x23) for US-3.5ACB	1
#29	990-205-0	O O-Ring(JW 1516-5)	1	#62	419-704-1	Magnet	1	<b>PARTS FOR US-3.5A, 3.5B AND 3.5MA</b>			
#31	990-923-0	O O-Ring(SNS-26)	1	#63	411-382-1	Hammer Casing Nut	1	#33	410-028-1	Hammer Casing	1
#32	010-790-1	Suspension Ring	1	#64	430-356-1	Bit Band	1				
				#65	970-211-0	Pin(H)(3x12)	1				

When ordering spare parts, please specify tool type, code number and part name.

Printed in Japan



**URYU SEISAKU, LTD.** Osaka Japan

For further information, please contact at any time your nearest URYU distributor.

OKA-052-04-10-06-2016