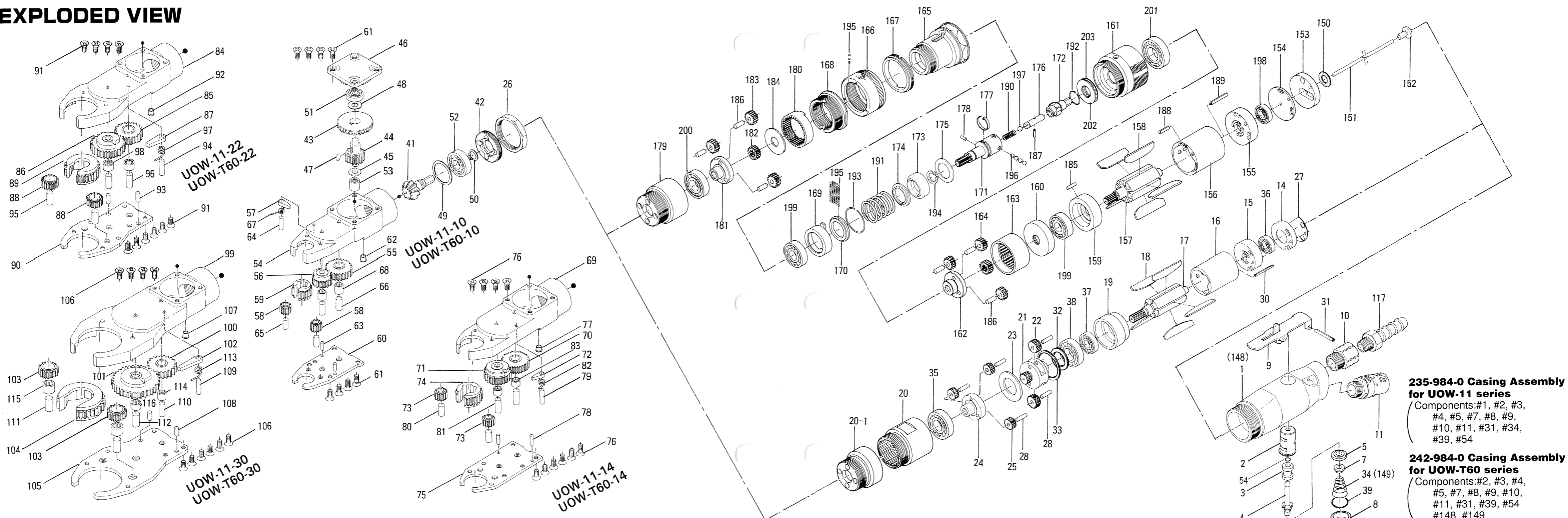


# UOW-11 & UOW-T60 Series OPEN-END WRENCHES

## EXPLODED VIEW



## PARTS LIST

Index No.	Code No.	Parts Name	Quantity	Index No.	Code No.	Parts Name	Quantity	Index No.	Code No.	Parts Name	Quantity
<b>COMMON PARTS</b>											
# 2	235-101-0	Valve Bushing	1	#14	233-291-0	Rear Plate Spacer	1	#61	957-318-0	Cross Flush Head Screw (M4×8)	8
# 3	235-210-0	Reverse Valve	1	#15	233-285-0	Rear Plate	1	#62	968-130-0	Grease Cup (3/16)	1
# 4	235-104-0	Valve Rod	1	#16	233-286-0	Cylinder	1	#63	972-089-0	Needle Roller (3×8)	2
# 5	235-100-1	Valve	1	#17	233-287-0	Rotor	1	#64	972-115-0	Roller Pin (4×16)	1
# 7	235-106-1	Valve Rod Cap	1	#18	233-288-0	Blade	5	#65	972-157-0	Needle Roller (5×12)	2
# 8	566-108-4	Valve Plug	1	#19	233-289-1	Front Plate	1	#66	972-216-0	Needle Roller (6×16)	2
# 9	508-914-4	Self-Locking Lever Assy	1	#20	233-029-1	Gear Casing	1	#67	976-926-0	Spring (5.5×7)	1
#10	191-091-5	Air Inlet Bushing	1	#20-1	233-037-0	Gear Casing Connector	1	#68	988-380-0	Needle Roller Bearing (F68)	2
#11	235-885-0	Silencer Assembly	1	#21	233-480-0	First Gear Cage	1	<b>PARTS FOR UOW-11-14 &amp; T60-14</b>			
#26	233-073-0	Gear Casing Lock Nut	1	#22	233-470-0	First Planet Gear	2	#69	235-032-4	Bevel Gear Casing	1
#31	973-124-0	Roll Pin (3×24)	1	#23	233-483-0	Gear Cage Spacer	1	#70	233-445-5	Middle Gear	1
#39	990-914-0	O-Ring (SNS-16)	1	#24	233-485-0	Second Gear Cage	1	#71	233-656-5	Ratchet Gear	1
#41	233-420-0	Driving Gear	1	#25	233-471-0	Second Planet Gear	3	#72	233-562-4	Checker	1
#42	878-161-1	Ball Bearing Support	1	#27	235-854-0	Casing Packing	1	#73	233-450-4	Spur Gear	2
#43	233-430-0	Driven Gear	1	#28	972-092-0	Needle Roller (3×12)	5	#74	233-447-4	Gear Socket (14)	1
#44	233-438-1	Driven Gear Spindle	1	#30	973-024-0	Roll Pin (2×24)	1	#75	235-070-4	Gear Casing Cover	1
#45	470-344-8	Cam Spacer	1	#32	975-167-0	Spacer (24×16×1)	1	#76	957-318-0	Cross Flush Head Screw (M4×8)	10
#46	233-072-0	Bevel Gear Casing Cover	1	#33	975-257-0	Spacer (33.8×29×1.5)	1	#77	968-130-0	Grease Cup (3/16)	1
#47	974-766-0	Key (4×6)	1	#34	977-254-0	Cone Spring (10×15×16)	1	#78	972-089-0	Needle Roller (3×8)	2
#48	975-749-0	Adjusting Spacer (13×6×T)	1	#35	982-101-0	Ball Bearing (6001)	1	#79	972-115-0	Roller Pin (4×16)	1
#49	975-802-0	Adjusting Spacer (26×22×T)	1	#36	982-401-0	Ball Bearing (EE-2)	1	#80	972-212-0	Needle Roller (6×12)	2
#50	979-107-0	Outer Snap Ring (10)	1	#37	982-402-0	Ball Bearing (EE-3)	1	#81	972-216-0	Needle Roller (6×16)	2
#51	982-013-0	Ball Bearing (606)	1	#38	982-403-0	Ball Bearing (EE-4)	1	#82	976-926-0	Spring (5.5×7)	1
#52	982-100-0	Ball Bearing (6000)	1	<b>PARTS FOR UOW-11-10 &amp; T60-110</b>							
#53	988-340-0	Needle Roller Bearing (TLAM69)	1	#54	235-032-0	Bevel Gear Casing	1	#83	988-380-0	Needle Roller Bearing (F68)	2
#54	990-593-0	O-Ring(5.1×1)	1	#55	233-445-5	Middle Gear	1	<b>PARTS FOR UOW-11-22 &amp; T60-22</b>			
<b>PARTS FOR UOW-11</b>											
# 1	235-025-0	Casing	1	#56	233-656-1	Ratchet Gear	1	#84	234-032-0	Bevel Gear Casing	1
				#57	233-562-0	Checker	1	#85	233-445-5	Middle Gear	1
				#58	233-450-0	Spur Gear	2	#86	234-656-0	Ratchet Gear	1
				#59	233-447-0	Gear Socket (10)	1				
				#60	235-070-0	Gear Casing Cover	1				

Index No.	Code No.	Parts Name	Quantity	Index No.	Code No.	Parts Name	Quantity	Index No.	Code No.	Parts Name	Quantity
#87	234-562-0	Checker	1	#115	988-382-0	Needle Roller Bearing (F88)	2	#176	471-318-5	Pilot Pin	1
#88	234-450-0	Spur Gear	1	#116	988-383-0	Needle Roller Bearing (F810)	1	#177	499-670-7	Cam Guide Band	1
#89	234-447-0	Gear Socket (22)	2	<b>PARTS FOR UOW-T60</b>							
#90	234-070-0	Gear Casing Cover	1	(#148)	242-025-0	Casing	1	#178	499-764-7	Notch Pin	1
#91	957-318-0	Cross Flush Head Screw (M4×8)	10	(#149)	977-256-0	Cone Spring (10×15×22)	1	#179	242-029-0	Gear Casing	1
#92	968-130-0	Grease Cup (3/16)	1	#150	996-422-0	Packing (16×10×1)	1	#180	242-466-0	Second Internal Gear	1
#93	970-310-0	Pin (H) (4×10)	2	#151	241-104-0	Valve Rod	1	#181	242-485-0	Second Gear Cage	1
#94	972-163-0	Needle Roller (5×18)	1	#152	242-254-0	Shut-off Valve	1	#182	499-445-3	Second Middle Gear	1
#95	972-214-0	Needle Roller (6×14)	2	#153	242-282-1	Casing Bushing	1	#183	499-471-3	Second Planet Gear	3
#96	972-218-0	Needle Roller (6×18)	2	#154	242-291-1	Rear Plate Spacer	1	#184	499-483-7	Gear Cage Spacer	1
#97	976-927-0	Spring (6.6×7.2)	1	#155	242-285-0	Rear Plate	1	#185	971-110-0	Pin (2×10)	1
#98	988-380-0	Needle Roller Bearing (F68)	4	#156	242-286-0	Cylinder	1	#186	972-111-0	Needle Roller (4×1)	6
<b>PARTS FOR UOW-11-30 &amp; T60-30</b>											
#99	234-032-6	Bevel Gear Casing	1	#157	499-287-7	Rotor	1	#187	969-470-0	Pin (E) (2×8)	1
#100	233-445-5	Middle Gear	1	#158	609-288-1	Blade	5	#188	973-112-0	Roll Pin (3×12)	1
#101	234-656-6	Ratchet Gear	1	#159	499-289-7	Front Plate	1	#189	973-124-0	Roll Pin (3×24)	2
#102	234-562-4	Checker	1	#160	499-296-7	Front Plate Spacer	1	#190	976-244-0	Spring (4.5×18)	1
#103	234-450-6	Spur Gear	2	#161	499-036-7	Hammer Casing Connector	1	#191	976-586-0	Spring (25×21)	1
#104	234-447-6	Gear Socket (30)	1	#162	499-480-7	Gear Cage	1	#192	978-150-0	Snap Ring (15×1)	1
#105	234-070-6	Gear Casing Cover	1	#163	499-465-7	First Internal Gear	1	#193	978-289-0	Snap Ring (29×1)	1
#106	957-318-0	Cross Flush Head Screw (M4×8)	10	#164	499-470-7	Gear Casing	1	#194	979-107-0	Outer Snap Ring (10)	1
#107	968-130-0	Grease Cup (3/16)	1	#165	499-028-7	Hammer Casing	1	#195	981-000-0	Ball (1/16)	52
#108	970-310-0	Pin (H) (4×10)	2	#166	499-264-7	Regulating Dial	1	#196	981-003-0	Ball (5/32)	4
#109	972-163-0	Needle Roller (5×18)	1	#167	499-257-7	Regulating Screw	1	#197	981-004-0	Ball (3/16)	1
#110	972-218-0	Needle Roller (6×18)	1	#168	499-382-7	Hammer Casing Nut	1	#198	982-035-0	Ball Bearing (698)	1
#111	972-314-0	Needle Roller (8×14)	2	#169	499-164-7	Spring Setter	1	#199	982-100-0	Ball Bearing (6000)	2
#112	972-318-0	Needle Roller (8×18)	1	#170	499-379-7	Retainer	1	#200	982-101-0	Ball Bearing (6001)	1
#113	976-927-0	Spring (6.6×7.2)	1	#171	499-452-7	Cam Guide	1	#201	982-102-0	Ball Bearing (6002)	1
#114	988-380-0	Needle Roller Bearing (F68)	1	#172	242-346-1	Cam	1	#202	988-837-0	Thrust Needle Bearing (NTB 1226)	1
				#173	499-375-8	Cam Ring	1	#203	988-962-0	Thrust Washer (As 1226)	2
				#174	499-165-7	Spring Holder	1	<b>STANDARD ACCESSORIES</b>			
				#175	499-682-7	Spacer	1	#117	940-114-0	Air Hose Nipple (NPT1/4×3/8)	1

When ordering spare parts, please specify tool type, code number and part name.

Printed in Japan

**URYU SEISAKU, LTD.** Osaka, Japan