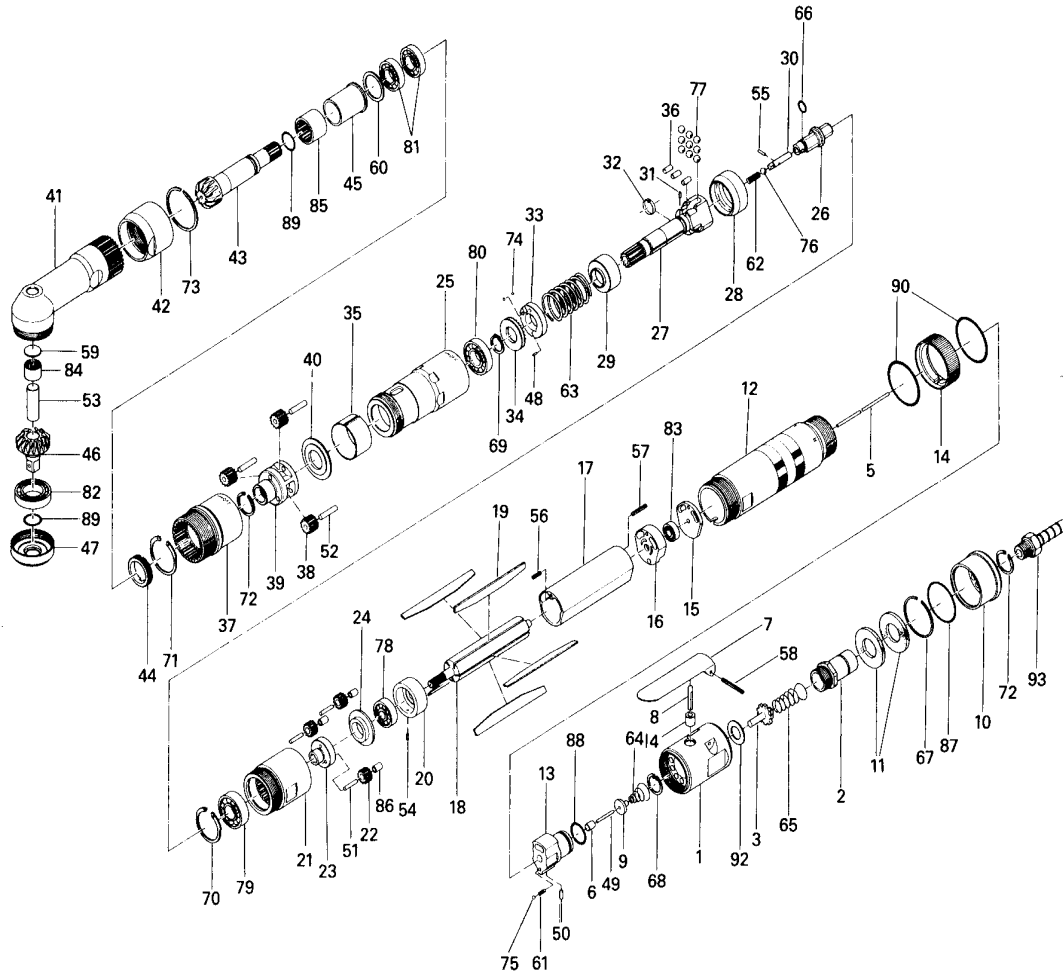


UAN-700R-40C TORQUE CONTROL CONTROL ANGLE NUTRUNNER

EXPLODED VIEW



PARTS LIST

Index No.	Code No.	Parts Name	Quantity	Index No.	Code No.	Parts Name	Quantity	Index No.	Code No.	Parts Name	Quantity
# 1	259-014-6	Valve Body	1	#35	259-670-0	Band	1	#67	978-337-0	Snap Ring (34×1.4)	1
# 2	259-091-6	Air Inlet Bushing	1	#36	259-651-6	Cam Roller	3	#68	979-009-0	Inner Snap Ring (16)	1
# 3	259-100-6	Valve	1	#37	259-466-6	Second Internal Gear	1	#69	979-110-0	Outer Snap Ring (13)	1
# 4	553-103-1	Valve Rod Bushing	1	#38	612-470-2	Second Planet Gear	3	#70	979-327-0	Inner Snap Ring (IRTW-28)	1
# 5	259-104-6	Valve Rod (2×147)	1	#39	259-485-6	Second Gear Cage	1	#71	979-331-0	Inner Snap Ring (IRTW-30)	1
# 6	444-106-8	Valve Rod Cap	1	#40	259-487-6	Second Gear Cage Spacer	1	#72	979-358-0	Inner Snap Ring (ISTW-17)	2
# 7	196-107-7	Valve Lever	1	#41	259-441-6	Angle Casing	1	#73	979-194-0	Outer Snap Ring (32)	1
# 8	259-114-0	Valve Spindle	1	#42	259-081-6	Locking Nut	1	#74	981-001-0	Ball (3/32)	2
# 9	259-254-6	Shut Off Valve	1	#43	259-420-6	Driving Gear	1	#75	981-002-0	Ball (1/8)	1
#10	259-780-6	Exhaust Stack	1	#44	259-426-0	Driving Gear Spindle Screw	1	#76	981-004-0	Ball (3/16)	1
#11	259-835-6	Filter	2	#45	259-427-6	Driving Gear Spindle Spacer	1	#77	981-005-0	Ball (7/32)	9
#12	259-025-6	Casing	1	#46	895-047-1	Driven Gear Assembly (P)	1	#78	982-022-0	Ball Bearing (627)	1
#13	259-210-6	Reverse Valve	1	#46-1	891-300-1	Socket Pin Assembly	1	#79	982-101-0	Ball Bearing (6001)	1
#14	259-212-6	Reverse Lever	1	#47	259-488-6	Angle Casing Cover	1	#80	982-403-0	Ball Bearing (EE-4)	1
#15	259-291-6	Rear Plate Spacer	1	#48	970-091-0	Pin (H) (2×4.5)	1	#81	982-902-0	Ball Bearing (6901)	2
#16	259-285-6	Rear Plate	1	#49	972-020-0	Roller Pin (2×19.8)	1	#82	982-904-0	Ball Bearing (6903)	1
#17	259-286-6	Cylinder	1	#50	972-090-0	Roller Pin (3×10)	1	#83	987-015-0	Miniature Ball Bearing (R1560)	1
#18	259-287-6	Rotor	1	#51	972-094-0	Roller Pin (3×14)	3	#84	988-388-0	Needle Roller Bearing (F1010)	1
#19	259-288-6	Blade	5	#52	972-120-0	Roller Pin (4×19)	3	#85	988-389-0	Needle Roller Bearing (F1616)	1
#20	259-289-6	Front Plate	1	#53	972-360-0	Roller Pin (10×28)	1	#86	988-590-0	Needle Roller Bearing (KT367N)	3
#21	259-465-6	First Internal Gear	1	#54	973-005-0	Roll Pin (2×5)	1	#87	990-603-0	O-Ring (28.5×1.3)	1
#22	259-470-6	First Planet Gear	3	#55	973-008-0	Roll Pin (2×8)	1	#88	990-590-0	O-Ring (17×1)	1
#23	259-480-6	First Gear Cage	1	#56	973-108-0	Roll Pin (3×8)	1	#89	990-910-0	O-Ring (SNS-12.5)	2
#24	259-807-6	Spacer	1	#57	973-116-0	Roll Pin (3×16)	1	#90	990-925-0	O-Ring (SNS-32)	2
#25	259-369-6	Clutch Casing	1	#58	973-124-0	Roll Pin (3×24)	1	#92	996-433-0	Packing (19×12×1)	1
#26	259-346-6	Cam	1	#59	975-596-0	Round Plate (14×1)	1				
#27	259-654-6	Cam Guide	1	#60	975-806-0	Adjusting Spacer (24×20×T)	1				
#28	259-375-6	Cam Ring	1								
#29	259-164-6	Spring Retainer	1	#61	976-022-0	Spring (3×5.5)	1				
#30	259-318-0	Pilot Pin	1	#62	976-058-0	Spring (4.5×11)	1				
#31	471-764-7	Notch Pin	1	#63	976-527-0	Spring (22.5×36)	1				
#32	471-670-7	Band	1	#64	977-072-0	Cone Spring (5.5×15×14)	1				
#33	259-562-6	Retainer	1	#65	977-275-0	Cone Spring (11×14×32)	1				
#34	259-257-6	Regulator Screw	1	#66	978-105-0	Snap Ring (10.5×0.8)	1				

STANDARD ACCESSORIES

#93	940-114-0	Air Hose Nipple (NPT1/4 - 3/8)	1
-----	-----------	--------------------------------	---

When ordering spare parts, please specify tool type, code number and part name.

Printed in Japan

URYU SEISAKU, LTD. Osaka, Japan

OKA-364-93-03-03-2002