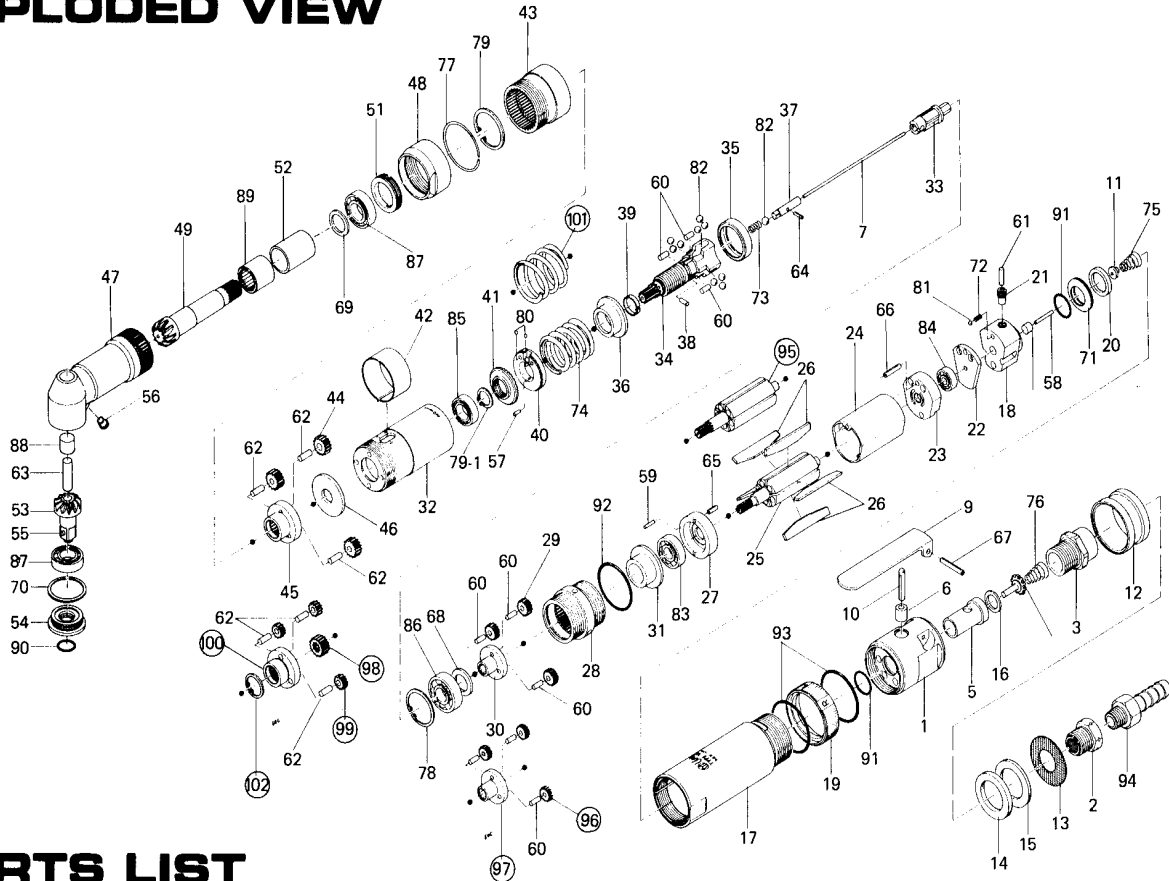


UAN-610R-30C & 60C, ANGLE NUTRUNNER [REVERSIBLE CLUTCH CUT TYPE]

EXPLODED VIEW



PARTS LIST

| Index No. | Parts No. | Parts Name | Quantity | Index No. | Parts No. | Parts Name | Quantity | Index No. | Parts No. | Parts Name | Quantity |
|---------------------|-----------|-------------------------|----------|-----------|-----------|--------------------------------|----------|-------------------------------|-----------|---------------------------------|----------|
| COMMON PARTS | | | | | | | | | | | |
| # 1 | 259-014-0 | Valve Body | 1 | #47 | 259-441-2 | Angle Casing | 1 | # 81 | 981-002-0 | Ball (1/8) | 1 |
| # 2 | 546-091-1 | Air Inlet Bushing | 1 | #48 | 259-081-0 | Locking Nut | 1 | # 82 | 981-004-0 | Ball (3/16) | 10 |
| # 3 | 259-097-0 | Air Inlet Connector | 1 | #49 | 259-420-2 | Driving Gear | 1 | # 83 | 982-015-0 | Ball Bearing (608) | 1 |
| # 4 | 259-100-0 | Valve | 1 | #51 | 259-426-0 | Driving Gear Spindle Screw | 1 | # 84 | 982-033-0 | Ball Bearing (696) | 1 |
| # 5 | 259-102-1 | Valve Bushing | 1 | #52 | 259-567-2 | Driving Gear Bushing | 1 | # 85 | 982-036-0 | Ball Bearing (699) | 1 |
| # 6 | 553-103-1 | Valve Rod Bushing | 1 | #53 | 895-046-1 | Driven Gear (OP-P) | 1 | # 86 | 982-100-0 | Ball Bearing (6000) | 1 |
| # 7 | 472-104-7 | Valve Rod | 1 | #54 | 259-488-2 | Angle Casing Cover | 1 | # 87 | 982-902-0 | Ball Bearing (6901) | 1 |
| # 8 | 444-106-8 | Valve Rod Cap | 1 | #55 | 891-300-1 | Socket Pin Assembly | 1 | # 88 | 988-480-0 | Needle Roller Bearing (BK0810) | 1 |
| # 9 | 196-107-7 | Valve Lever | 1 | #56 | 968-130-0 | Grease Cup (3/16) | 1 | # 89 | 988-393-0 | Needle Roller Bearing (NF-1416) | 1 |
| #10 | 259-114-0 | Valve Shaft | 1 | #57 | 970-092-0 | Pin(H) (2 x 5.5) | 1 | # 90 | 990-910-0 | O-Ring (SNS-12.5) | 1 |
| #11 | 259-254-0 | Shut-Off Valve | 1 | #58 | 970-102-0 | Pin(H) (2 x 16) | 1 | # 91 | 990-912-0 | O-Ring (SNS-14) | 2 |
| #12 | 259-780-0 | Exhaust Stack | 1 | #59 | 971-110-0 | Pin (2 x 10) | 1 | # 92 | 990-924-0 | O-Ring (SNS-30) | 1 |
| #13 | 259-782-0 | Exhaust Deflector | 1 | #60 | 972-089-0 | Roller Pin (3 x 8) | 6 | # 93 | 990-925-0 | O-Ring (SNS-32) | 2 |
| #14 | 259-835-0 | Filter | 1 | #61 | 972-092-0 | Roller Pin (3 x 12) | 1 | PARTS FOR UAN-610R-30C | | | |
| #15 | 259-835-1 | Filter | 1 | #62 | 972-111-0 | Roller Pin (4 x 11) | 3 | # 25 | 259-287-0 | Rotor | 1 |
| #16 | 996-418-0 | Packing (15 x 9 x 1) | 1 | #63 | 972-320-0 | Roller Pin (8 x 20) | 1 | # 29 | 472-470-3 | Planet C'var | 3 |
| #17 | 259-025-0 | Casing | 1 | #64 | 969-470-0 | Pin(E) (2 x 8) | 1 | # 30 | 472-480-3 | Gear Cage | 1 |
| #18 | 259-210-0 | Reverse Valve | 1 | #65 | 973-108-0 | Roll Pin (3 x 8) | 1 | # 44 | 499-470-7 | First Planet Gear | 3 |
| #19 | 259-212-0 | Reverse Lever | 1 | #66 | 973-116-0 | Roll Pin (3 x 16) | 1 | # 45 | 259-485-0 | Second Gear Cage | 1 |
| #20 | 259-222-1 | Reverse Valve Setter | 1 | #67 | 973-124-0 | Roll Pin (3 x 24) | 1 | # 74 | 976-616-0 | Spring (27 x 30) | 1 |
| #21 | 259-224-0 | Reverse Valve Set Screw | 1 | #68 | 975-106-0 | Spacer (18.5 x 11 x 1) | 1 | PARTS FOR UAN-610R-60C | | | |
| #22 | 259-291-0 | Rear Spacer | 1 | #69 | 975-806-0 | Adjusting Spacer (24 x 20 x T) | 1 | # 95 | 259-287-1 | Rotor | 1 |
| #23 | 259-285-0 | Rear Plate | 1 | #70 | 975-807-0 | Adjusting Spacer (28 x 25 x T) | 1 | # 96 | 472-471-7 | Second Planet Gear | 3 |
| #24 | 259-286-0 | Cylinder | 1 | #71 | 962-706-0 | Belleville Spring (BD24) | 2 | # 97 | 472-485-7 | Second Gear Cage | 1 |
| #26 | 259-288-0 | Blade | 5 | #72 | 976-022-0 | Spring (3 x 5.5) | 1 | # 98 | 499-445-0 | First Middle Gear | 1 |
| #27 | 496-289-1 | Front Plate | 1 | #73 | 976-058-0 | Spring (4.5 x 11) | 1 | # 99 | 499-470-0 | First Planet Gear | 3 |
| #28 | 463-029-8 | Gear Casing | 1 | #75 | 977-128-0 | Cone Spring (6.5 x 11 x 14) | 1 | #100 | 259-485-1 | Second Gear Cage | 1 |
| #31 | 472-807-3 | Spacer | 1 | #76 | 977-180-0 | Cone Spring (7.5 x 12 x 22) | 1 | #101 | 976-594-0 | Spring (26.5 x 30) | 1 |
| #32 | 259-369-0 | Clutch Casing | 1 | #77 | 978-307-0 | Snap Ring (30 x 1.6) | 1 | #102 | 979-358-0 | Inner Snap Ring (ISTW-17) | 1 |
| #33 | 259-346-0 | Cam | 1 | #78 | 979-019-0 | Inner Snap Ring (26) | 1 | ACCESSORIES | | | |
| #34 | 259-654-0 | Cam Guide | 1 | #79 | 979-327-0 | Inner Snap Ring (IRTW-28) | 1 | # 94 | 940-114-0 | Air Hose Nipple (NPT 1/4 x 3/8) | 1 |
| #35 | 259-375-0 | Cam Ring | 1 | #79-1 | 979-108-0 | Outer Snap Ring (11) | 1 | | | | |
| #36 | 259-164-0 | Spring Retainer | 1 | #80 | 981-001-0 | Ball (3/32) | 2 | | | | |
| #37 | 259-318-0 | Pilot Pin | 1 | | | | | | | | |
| #38 | 471-764-7 | Notch Pin | 1 | | | | | | | | |
| #39 | 471-670-7 | Band | 1 | | | | | | | | |
| #40 | 444-562-4 | Spring Holder | 1 | | | | | | | | |
| #41 | 472-257-8 | Regulating Screw | 1 | | | | | | | | |
| #42 | 259-670-0 | Band | 1 | | | | | | | | |
| #43 | 259-466-0 | Second Internal Gear | 1 | | | | | | | | |
| #46 | 259-487-0 | Second Gear Cage Spacer | 1 | | | | | | | | |

When ordering spare parts, please specify tool type, code number and part name.

Printed in Japan

URYU SEISAKU, LTD. Osaka, Japan

OKA-322-97-12-01-2004