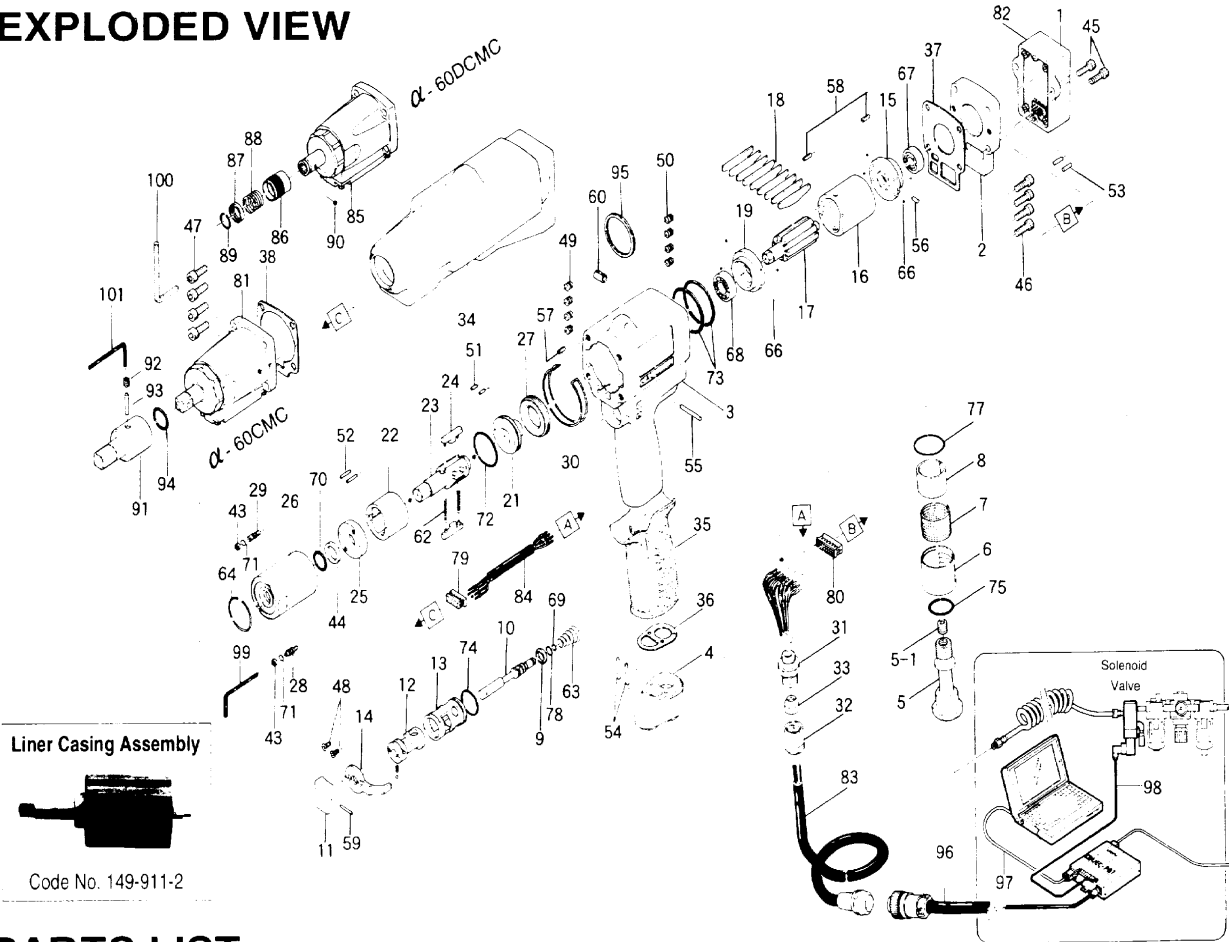


α ALPHA 60(D) CMC OIL-PULSE WRENCH

EXPLODED VIEW



PARTS LIST

Index No.	Code No.	Parts Name	Quantity	Index No.	Code No.	Parts Name	Quantity	Index No.	Code No.	Parts Name	Quantity
# 1	144-055-3	Control Casing	1	# 36	149-850-5	Casing Connector Packing	1	# 72	990-329-0	O-Ring (JW1530-19)	1
# 2	144-012-3	Head Cover	1	# 37	149-853-2	Head Cover Packing	1	# 73	990-337-0	O-Ring (JW1530-27)	2
# 3	149-052-2	Handle	1	# 38	149-867-2	Front Casing Packing	1	# 74	990-914-0	O-Ring (SNS-16)	1
# 4	149-035-5	Handle Connector	1	# 43	944-002-0	Supporting Ring (2.6×4.5×1)	2	# 75	990-916-0	O-Ring (SNS-18)	1
# 5	148-091-9	Air Inlet Bushing	1	# 44	944-214-0	Supporting Ring (12×15.9×1.5)	1	# 77	990-921-0	O-Ring (SNS-22.4)	1
# 5-1	148-093-9	Air Inlet Bushing Screw	1	# 45	945-012-0	Allen Head Bolt (M4×12)	2	# 78	990-972-0	O-Ring (SNS-4) (NOK)	1
# 6	173-780-5	Exhaust Cover	1	# 46	945-014-0	Allen Head Bolt (M4×14)	4	# 79	909-918-0	Double-Row-Socket (DF11-12DC-2C)	1
# 7	173-042-0	Silencer	1	# 47	945-117-0	Allen Head Bolt (M5×16)	4	# 80	909-972-0	Double-Row-Socket (DF11-16DS-2C)	1
# 8	173-835-0	Filter	1	# 48	948-423-0	Allen Flash Head Screw (M3×6)	2	# 81	850-470-1	Sensor Casing Assembly	1
# 9	173-100-0	Valve	1	# 49	965-006-0	Heli-Sert (M4×1.5D)	4	# 82	909-940-0	Control Casing Assembly	1
# 10	173-104-0	Valve Rod	1	# 50	965-011-0	Heli-Sert (M5×1.5D)	4	# 83	909-960-0	Joint Cable Assembly	1
# 11	149-107-2	Valve Lever	1	# 51	970-130-0	Pin (H) (2.45×4.5)	2	# 84	909-965-0	Relay Cable Assembly	1
# 12	151-210-4	Reverse Valve	1	# 52	970-135-0	Pin (H) (2.45×11)	2	Parts for α-60DCMC			
# 13	151-211-4	Reverse Valve Bushing	1	# 53	970-204-0	Pin (H) (3×6)	2	# 85	850-476-1	Sensor Casing Assembly	1
# 14	173-212-0	Reverse Lever	1	# 54	970-208-0	Pin (H) (3×10)	2	# 86	011-351-1	Bit Sleeve	1
# 15	149-285-2	Rear Plate	1	# 55	971-125-0	Pin (2×25)	1	# 87	011-352-1	Bit Spacer	1
# 16	149-286-2	Cylinder	1	# 56	973-005-0	Roll Pin (2×5)	1	# 88	976-327-0	Spring (13.5×11×0.9)	1
# 17	161-287-3	Rotor	1	# 57	973-007-0	Roll Pin (2×7)	1	# 89	978-117-0	Snap Ring (11.7×1.0)	1
# 18	161-288-3	Blade	9	# 58	973-008-0	Roll Pin (2×8)	2	# 90	981-002-0	Ball (1/8)	1
# 19	149-289-2	Front Plate	1	# 59	973-014-0	Roll Pin (2×14)	1	ACCESSORIES			
# 21	196-901-4	Rear Liner Plate	1	# 60	973-340-0	Roll Pin (6×10)	1	# 91	904-090-0	Extension Bar (3/8×43)	1
# 22	177-902-5	Liner	1	# 61	976-006-0	Spring (3×5×0.4)	1	# 92	953-104-0	Allen Head Screw (M4×4)	1
# 23	149-319-2	Anvil	1	# 62	976-238-0	Spring (3.3×21×0.4)	2	# 93	971-214-0	Pin (3×14)	1
# 24	177-440-5	Driving Blade	2	# 63	977-160-0	Cone Spring (7.4×14×20)	1	# 94	990-011-0	O-Ring (P12)	1
# 25	178-904-8	Front Liner Plate	1	# 64	978-282-0	Snap Ring (28×1)	1	# 95	004-790-2	Suspension Ring	1
# 26	177-905-6	Liner Casing	1	# 65	981-002-0	Ball (1/8)	1	# 96	909-942-0	Sensor Cable Assembly (5J5)	1
# 27	190-906-6	Liner Casing Setter	1	# 66	981-045-0	Ball (1.5)	8	# 97	910-020-0	Cross Cable (RS-232C/DOSV)	1
# 28	174-907-8	Relief Valve Spindle	1	# 67	982-401-0	Ball Bearing (EE-2)	1	# 98	909-748-0	Solenoid Cable (CP5M)	1
# 29	178-742-0	Oil Plug	1	# 68	982-402-0	Ball Bearing (EE-3)	1	# 99	939-091-0	Allen Wrench (1.5mm)	1
# 30	149-754-2	Clip Ring	1	# 69	990-002-0	O-Ring (P4)	1	# 100	939-109-0	Allen Wrench (2mm)	1
# 31	149-079-5	Connector	1	# 70	990-152-0	O-Ring (P12)	1	# 101	939-105-0	Allen Wrench (4mm)	1
# 32	149-018-5	Cap	1	# 71	990-320-0	O-Ring (ARP-568-003)	2				
# 33	149-562-6	Stopper	1								
# 34	144-840-3	Handle Protector	1								
# 35	173-842-0	Handle Cover	1								

When ordering spare parts, please Specify tool type, code number and part name.

Printed in Japan

URYU SEISAKU, LTD. Osaka Japan