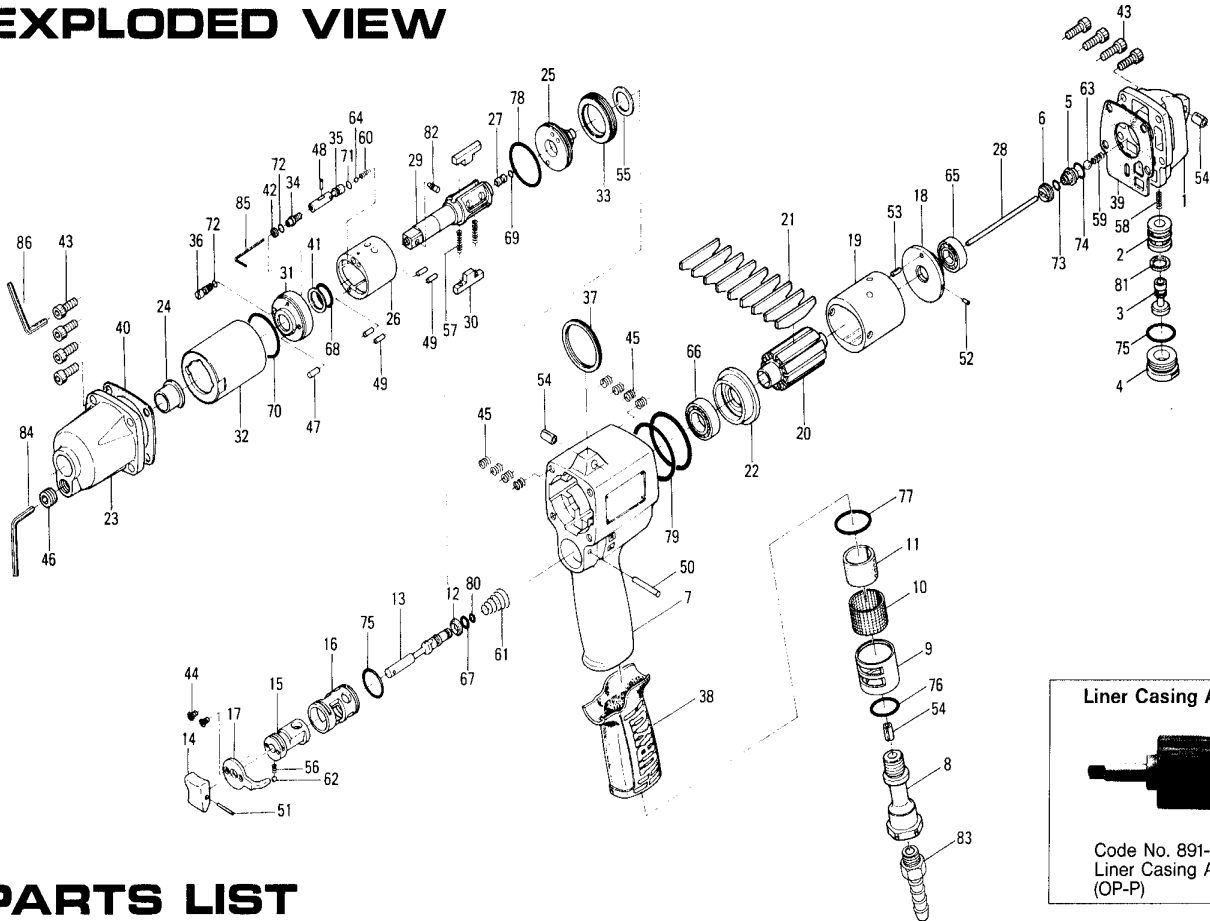


α ALPHA T70 OIL-PULSE WRENCH

EXPLODED VIEW



PARTS LIST

Index No.	Code No.	Parts Name	Quantity	Index No.	Code No.	Parts Name	Quantity	Index No.	Code No.	Parts Name	Quantity
# 1	151-012-4	Head Cover	1	# 36	194-742-0	Oil Plug	1	# 66	982-903-0	Ball Bearing (6902)	1
# 2	174-253-2	Shut-Off Valve Bushing	1	# 37	004-790-2	Suspension Ring	1	# 67	990-002-0	O-Ring (P4)	1
# 3	174-254-2	Shut-Off Valve	1	# 38	173-842-0	Handle Cover	1	# 68	990-152-0	O-Ring (P12) (NTN)	1
# 4	175-927-9	Shut-Off Valve Cover	1	# 39	151-853-4	Head Cover Packing	1	# 69	990-320-0	O-Ring (ARP568-003)	1
# 5	175-968-9	Pilot Valve Retainer	1	# 40	194-867-0	Front Casing Packing	1	# 70	990-334-0	O-Ring (JW1530-24)	1
# 6	175-019-9	Valve Cover	1	# 41	944-013-0	Supporting Ring (P12)	1	# 71	990-621-0	O-Ring (3.8×1.8×1.0)	1
# 7	151-025-4	Handle	1	# 42	944-203-0	Supporting Ring (3.1×5×1)	1	# 72	990-900-0	O-Ring (SNS-2)	2
# 8	173-091-0	Air Inlet Bushing	1	# 43	945-116-0	Allen Head Bolt (M5×16)	8	# 73	990-901-0	O-Ring (SNS-3)	1
# 9	173-780-0	Exhaust Stack	1	# 44	948-423-0	Allen Flush Head Bolt (M3×6)	2	# 74	990-907-0	O-Ring (SNS-9)	1
# 10	173-042-0	Silencer	1	# 45	965-011-0	Heli-Sert (M5×1.5D)	8	# 75	990-914-0	O-Ring (SNS-16)	2
# 11	173-835-0	Filter	1	# 46	966-100-0	Allen Head Plug (1/8)	1	# 76	990-916-0	O-Ring (SNS-18)	1
# 12	173-100-0	Valve	1	# 47	969-449-0	Pin (G) (3×6)	1	# 77	990-921-0	O-Ring (SNS-22.4)	1
# 13	173-104-0	Valve Rod	1	# 48	970-013-0	Pin (H) (1.5×4)	1	# 78	990-923-0	O-Ring (SNS-26)	1
# 14	177-107-5	Valve Lever	1	# 49	970-204-0	Pin (H) (3×6)	4	# 79	990-930-0	O-Ring (SNS-40)	2
# 15	151-210-4	Reverse Valve	1	# 50	971-125-0	Pin (2×25)	1	# 80	990-972-0	O-Ring (SNS-4) (NOK)	1
# 16	151-211-4	Reverse Valve Bushing	1	# 51	973-014-0	Roll Pin (2×14)	1	# 81	996-418-0	Packing (15×9×1)	1
# 17	173-212-0	Reverse Valve Lever	1	# 52	973-066-0	Roll Pin (2.5×6)	1	# 82	891-300-1	Socket Pin Assembly	1
# 18	164-285-0	Rear Plate	1	# 53	973-068-0	Roll Pin (2.5×8)	1	ACCESSORIES			
# 19	164-286-0	Cylinder	1	# 54	973-340-0	Roll Pin (6×10)	3	# 83	940-114-0	Air Hose Nipple (NPT1/4×3/8)	1
# 20	151-287-4	Rotor	1	# 55	975-780-0	Adjusting Spacer (21×13×t)	1	# 84	939-104-0	Allen Wrench (5MM)	1
# 21	164-288-0	Blade	9	# 56	976-006-0	Spring (3×5) (0.4)	1	# 85	939-091-0	Allen Wrench (1.5MM) (80×20)	1
# 22	164-289-0	Front Plate	1	# 57	976-248-0	Spring (3.7×29) (0.5)	2	# 86	939-105-0	Allen Wrench (4MM)	1
# 23	194-439-0	Front Casing	1	# 58	976-072-0	Spring (4.5×10.5) (0.5)	1				
# 24	190-328-6	Anvil Bushing	1	# 59	976-275-0	Spring (6.7×12) (0.7)	1				
# 25	174-901-2	Rear Liner Plate	1	# 60	976-310-0	Spring (2.8×8.2) (0.4)	1				
# 26	174-902-2	Liner	1	# 61	977-160-0	Cone Spring (7.4×14×20)	1				
# 27	175-546-9	Piston	1	# 62	981-002-0	Ball (1/8)	1				
# 28	151-130-4	Piston Rod	1	# 63	981-006-0	Ball (1/4)	1				
# 29	891-309-1	Anvil (OP-P)	1	# 64	981-150-0	Ball (3)	1				
# 30	194-440-0	Driving Blade	2	# 65	982-402-0	Ball Bearing (EE-3)	1				
# 31	174-904-2	Front Liner Plate	1								
# 32	194-905-0	Liner Casing	1								
# 33	194-906-0	Liner Casing Setter	1								
# 34	174-907-2	Relief Valve Spindle	1								
# 35	151-970-5	Relief Valve	1								



When ordering spare parts, please specify tool type, code number and part name.

Printed in Japan

URYU SEISAKU, LTD. Osaka, Japan

OKA-423-98-04-06-2002