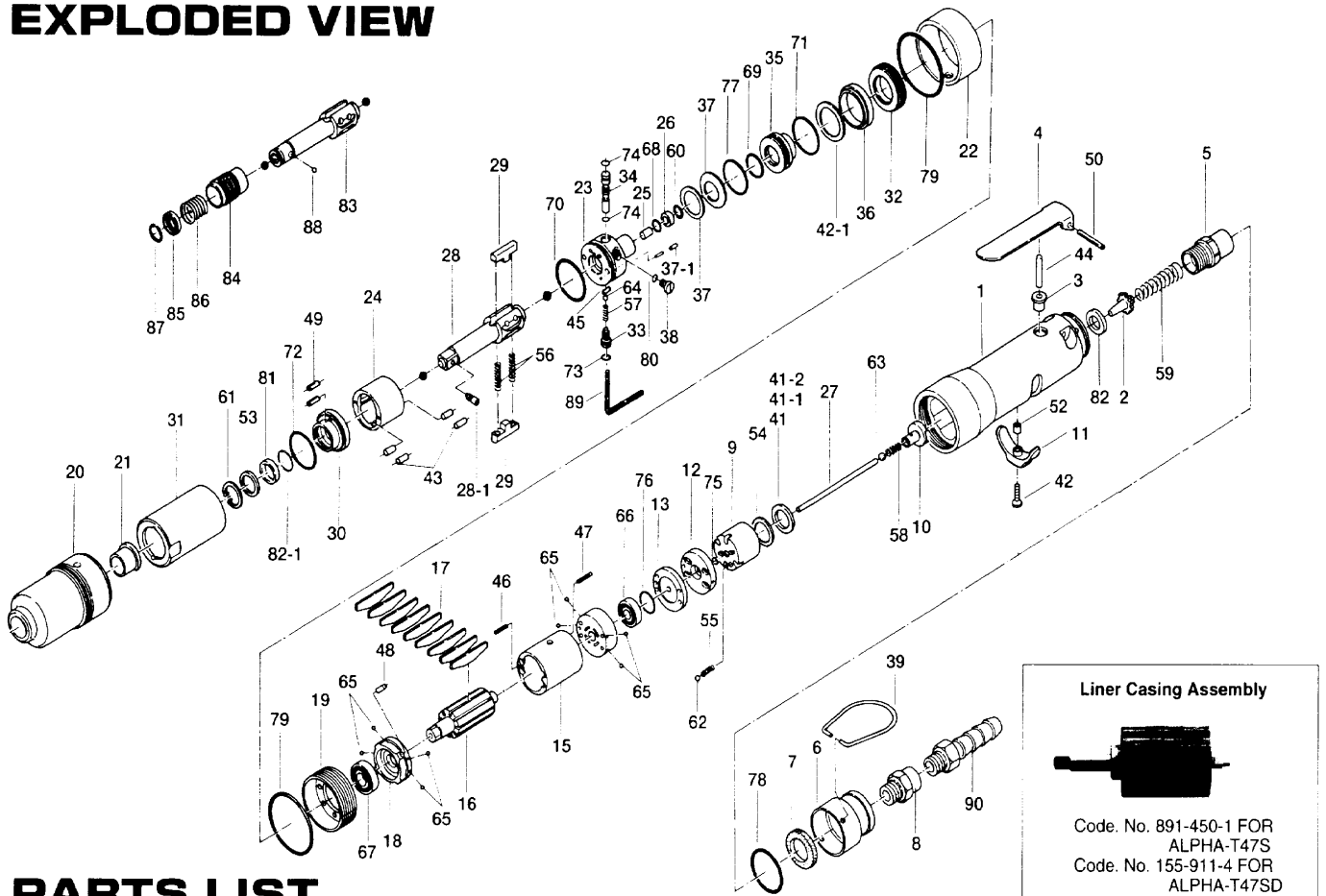


# α ALPHA T47S, T47SD OIL-PULSE WRENCHES

## EXPLODED VIEW



## PARTS LIST

Index No.	Code No.	Parts Name	Quantity	Index No.	Code No.	Parts Name	Quantity	Index No.	Code No.	Parts Name	Quantity
# 1	155-025-2	Casing	1	# 35	150-972-6	Accumulator	1	# 66	982-401-0	Ball Bearing (EE-2)	1
# 2	259-100-0	Valve	1	# 36	150-973-5	Liner Casing Spacer	1	# 67	982-402-0	Ball Bearing (EE-3)	1
# 3	161-103-3	Valve Rod Bushing	1	# 37	155-167-2	Belleville Spring (609)	2	# 68	990-964-0	O-Ring (ARP568-008) NOK	1
# 4	196-107-7	Valve Lever	1	# 37-1	150-064-5	Plug	1	# 69	990-440-0	O-Ring (1-JASO-1014)	1
# 5	461-097-6	Air Inlet Connector	1	# 38	150-742-5	Oil-Plug	1	# 70	990-329-0	O-Ring (JW1530-19)	1
# 6	161-782-3	Exhaust Cover	1	# 39	010-790-1	Suspension Ring	1	# 71	990-331-0	O-Ring (JW1530-21)	1
# 7	472-835-7	Filter	1	# 41	944-216-0	Supporting (14×20×1.85) (Standard)	1	# 72	990-605-0	O-Ring (25×1.45)	1
# 8	480-091-8	Air Inlet Bushing	1	# 41-1	944-217-0	Supporting (14×20×1.8)	1	# 73	990-623-0	O-Ring (4.6×3.0×0.8)	1
# 9	155-253-2	Shut-Off Valve Bushing	1	# 41-2	944-218-0	Supporting (14×20×1.9)	1	# 74	990-625-0	O-Ring (5.5×3.5×1.0)	2
# 10	155-254-2	Shut-Off Valve	1	# 42	948-426-0	Allen Head Bolt (M3×12)	1	# 75	990-900-0	O-Ring (SNS-2)	1
# 11	161-212-3	Reverse Lever	1	# 42-1	150-682-9	Buffer	1	# 76	990-914-0	O-Ring (SNS-16)	1
# 12	155-213-2	Reverse Valve Spacer	1	# 43	970-130-0	Pin (H) (2.45×4.5)	4	# 77	990-979-0	O-Ring (SNS-20) (NOK)	1
# 13	155-291-2	Rear Plate Spacer	1	# 44	970-220-0	Pin (H) (3×20)	1	# 78	990-916-0	O-Ring (SNS-18)	1
# 14	161-285-3	Rear Plate	1	# 45	972-011-0	Roller Pin (1.5×4.8)	1	# 79	990-333-0	O-Ring (JW1530-23)	2
# 15	161-286-3	Cylinder	1	# 46	973-001-0	Roll Pin (1.5×6)	1	# 80	990-323-0	O-Ring (ARP-568-004)	1
# 16	155-287-2	Rotor	1	# 47	973-004-0	Roll Pin (1.5×20)	1	# 81	944-213-0	Supporting Ring (12×16×1)	1
# 17	155-288-2	Blade (PC)	9	# 48	973-005-0	Roll Pin (2×5)	1	# 82	996-424-0	Packing (16×9×2)	1
# 18	161-289-3	Front Plate	1	# 49	973-040-0	Roll Pin (1.5×5)	2	# 82-1	990-152-0	O-Ring (P12)ATN	1
# 19	177-036-5	Front Casing Connector	1	# 50	973-124-0	Roll Pin (3×24)	1	<b>ALPHA-T47SD</b>			
# 20	150-439-6	Front Casing	1	# 52	975-004-0	Spacer (5.5×3.1×2.7)	1	# 83	177-350-7	Driver Anvil	1
# 21	190-328-6	Anvil Bushing	1	# 53	150-807-6	Spacer	1	# 84	011-351-1	Bit Sleeve	1
# 22	152-384-6	Hammer Casing Band	1	# 54	975-788-0	Adjusting Spacer (22×18.5×1)	1	# 85	011-352-1	Bit Spacer	1
# 23	155-901-2	Rear Liner Plate	1	# 55	976-006-0	Spring (3×5) (0.4)	1	# 86	976-327-0	Spring (13.5×11) (0.9)	1
# 24	177-902-5	Liner	1	# 56	976-791-0	Spring (3.3×21) (0.4)WPC	2	# 87	978-117-0	Snap Ring (11.7×1)	1
# 25	150-546-5	Piston	1	# 57	976-315-0	Spring (3×6.9) (0.4)	1	# 88	981-002-0	Ball (1/8)	1
# 26	150-557-5	Piston Bushing	1	# 58	976-314-0	Spring (4.3×11) (0.4)	1	<b>ACCESSORIES</b>			
# 27	188-130-9	Piston Rod (2.1×77.0)	1	# 59	977-155-0	Cone Spring (7×10×35)	1	= 89	990-109-0	Allen Wrench (2) (64×64)	1
# 28	891-307-1	Anvil (OP-P) Assembly	1	# 60	978-090-0	Snap Ring (9×0.7)	1	= 90	940-114-0	Air Hose Nipple (NPT1/4×3/8)	1
# 28-1	891-300-1	Socket Pin Assembly	1	# 61	979-317-0	Snap Ring (IRTW-17)	1				
# 29	177-440-5	Driving Blade	2	# 62	981-002-0	Ball (1/8)	1				
# 30	150-904-5	Front Liner Plate	1	# 63	981-003-0	Ball (5/32)	1				
# 31	150-905-5	Liner Casing	1	# 64	981-225-0	Ball (2.5mm)	1				
# 32	190-906-6	Liner Casing Setter	1	# 65	981-045-0	Ball (1.5mm)	8				
# 33	150-907-5	Relief Valve Spindle	1								
# 34	150-970-7	Relief Valve	1								

When ordering spare parts, please specify tool type, code number and part name.

Printed in Japan

**URYU SEISAKU, LTD.** Osaka, Japan