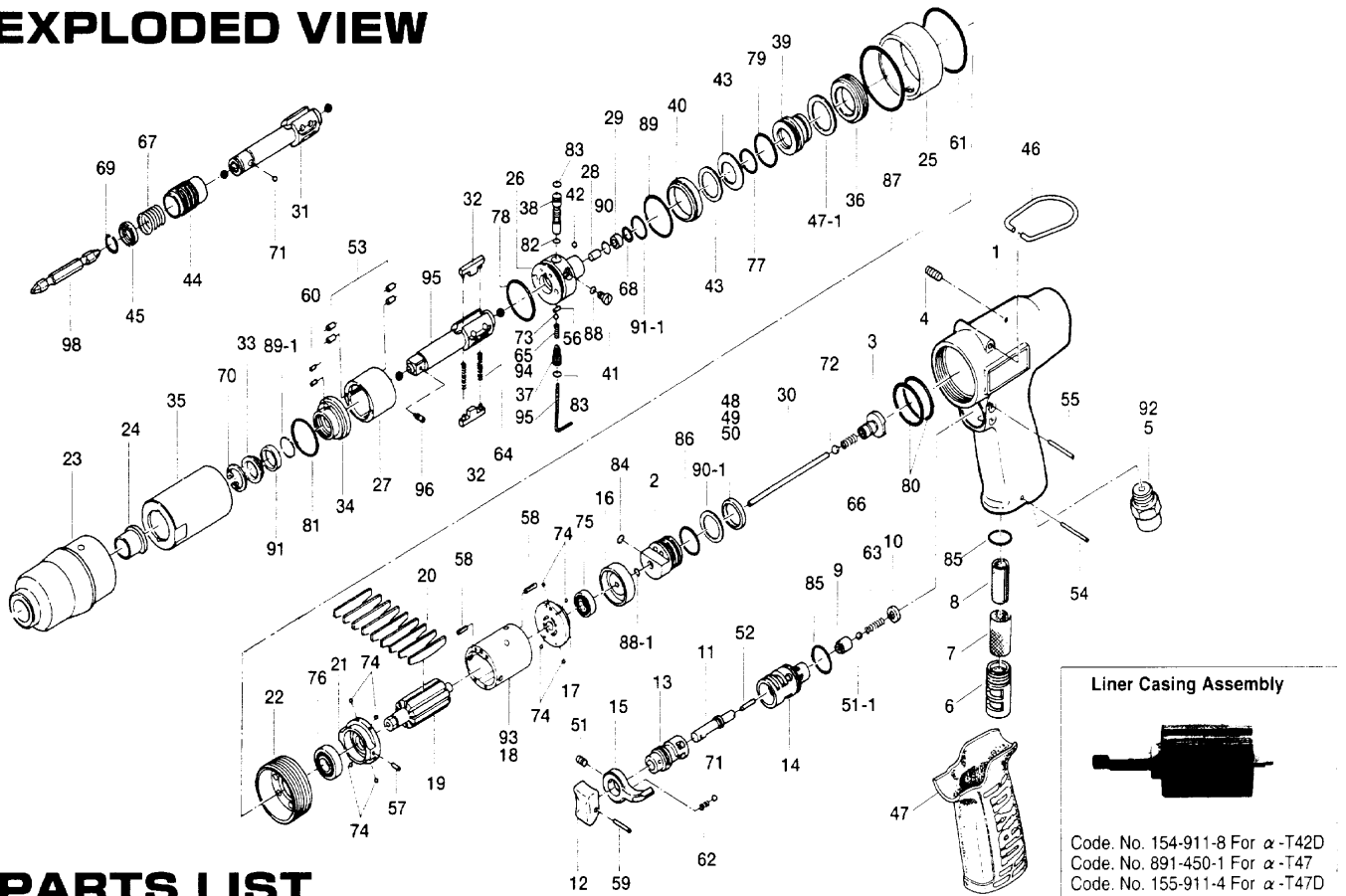


ALPHA-T42D,T47(D) OIL-PULSE WRENCHES

EXPLODED VIEW



PARTS LIST

Index No.	Code No.	Parts Name	Quantity	Index No.	Code No.	Parts Name	Quantity	Index No.	Code No.	Parts Name	Quantity
# 1	152-025-6	Handle	1	# 47	174-842-8	Handle Cover	1	# 88	990-323-0	O-Ring (ARP-568-004)	1
# 2	152-253-6	Shut-Off Valve Bushing	1	# 47-1	150-682-9	Buffer	1	# 88-1	990-901-0	O-Ring (SNS-3)	1
# 3	155-254-2	Shut-Off Valve	1	# 48	944-216-0	Supporting Ring (14×20×1.85) (Standerd)	1	# 89	990-979-0	O-Ring (SNS-20) (NOK)	1
# 4	150-108-5	Valve Plug	1	# 49	944-217-0	Supporting Ring (14×20×1.8)	1	# 89-1	990-152-0	O-Ring (P12) NTI	1
# 6	480-780-8	Exhaust Stack	1	# 50	944-218-0	Supporting Ring (14×20×1.9)	1	# 90	990-964-0	O-Ring (ARP568-008) (NOK)	1
# 7	480-042-8	Silencer	1	# 51	952-106-0	Allen Point Screw (M4×6)	1	# 90-1	990-914-0	O-Ring (SNS-16)	1
# 8	177-835-5	Filter	1	# 51-1	981-155-0	Ball (3.5MM)	1	# 91	944-213-0	Supporting Ring (12×16×1)	1
# 9	850-383-1	Valve	1	# 52	969-412-0	Pin (G) (2×12)	1	# 91-1	975-788-0	Adjusting Spacer (22×18.5×1)	1
# 10	850-384-1	Valve Cover	1	# 53	970-130-0	Pin (2.45×4.5)	4	SPARE PARTS EOR ALPHA-T42D			
# 11	150-103-5	Valve Rod Bushing	1	# 54	971-120-0	Pin (2×20)	1	# 5	154-091-8	Air Inlet Bushing	1
# 12	177-107-5	Valve Lever	1	# 55	971-123-0	Pin (2×23)	1	# 18	154-286-8	Cylinder	1
# 13	480-210-9	Reverse Valve	1	# 56	972-011-0	Roller Pin (1.5×4.8)	1	# 65	976-395-0	Spring (2.8×6.9) (0.3)	1
# 14	850-382-1	Reverse Valve Bushing	1	# 57	973-006-0	Roll Pin (2×6)	1	SPARE PARTS EOR ALPHA-T47 & T47D			
# 15	480-212-8	Reverse Lever	1	# 58	973-001-0	Roll Pin (1.5×6)	2	# 92	152-091-6	Air Inlet Bushing	1
# 16	152-291-6	Rear Plate Spacer	1	# 59	973-014-0	Roll Pin (2×14)	1	# 93	152-286-6	Cylinder	1
# 17	152-285-6	Rear Plate	1	# 60	973-040-0	Roll Pin (1.5×5)	2	# 94	976-315-0	Spring (3×6.9) (0.4)	1
# 19	155-287-2	Rotor	1	# 61	975-752-0	Adjusting Spacer (15×10×1)	1	SPARE PARTS EOR ALPHA-T47			
# 20	155-288-2	Blade (PC)	9	# 62	976-006-0	Spring (3×5) (0.4)	1	# 95	891-307-1	Anvil (OP-P)	1
# 21	162-289-8	Front Plate	1	# 63	976-229-0	Spring (3.2×13) (0.3)	1	# 96	891-300-1	Socket Pin Assembly	1
# 22	177-036-5	Hammer Casing Connector	1	# 64	976-791-0	Spring (3.3×21) (0.4) WPC	2	SPARE PARTS EOR ALPHA-T42D & T47D			
# 23	152-439-6	Front Casing	1	# 66	976-314-0	Spring (4.3×11) (0.4)	1	# 31	177-350-7	Driver Anvil	1
# 24	190-328-6	Anvil Bushing	1	# 68	978-090-0	Snap Ring (9×0.7)	1	# 44	011-351-1	Bit Sleeve	1
# 25	152-384-6	Hammer Casing Band	1	# 70	979-317-0	Inner Snap Ring (IRTW-17)	1	# 45	011-352-1	Bit Spacer	1
# 26	155-901-2	Rear Liner Plate	1	# 71	981-002-0	Ball (1/8)	1	# 67	976-327-0	Spring (13.5×11)	1
# 27	177-902-5	Liner	1	# 72	981-245-0	Ball (4.5MM)	1	# 69	978-117-0	Snap Ring (11.7×1)	1
# 28	150-546-5	Piston	1	# 73	981-225-0	Ball (2.5MM)	1	# 71	981-002-0	Ball (1/8)	1
# 29	150-557-5	Piston Bushing	1	# 74	981-045-0	Ball (1.5MM)	8	ACCESSORIES			
# 30	187-130-3	Piston Rod	1	# 75	982-401-0	Ball Bearing (EE2)	1	= 97	939-107-0	Allen Wrench 2mm	1
# 32	177-440-5	Driving Blade	2	# 76	982-402-0	Ball Bearing (EE3)	1	= 98	916-810-0	(+) Double Bit No.2×75 (6.35H)	1
# 33	150-807-6	Spacer	1	# 77	990-440-0	O-Ring (1-JASO-1014)	1				
# 34	150-904-5	Front Liner Plate	1	# 78	990-329-0	O-Ring (JW1530-19)	1				
# 35	150-905-5	Liner Casing	1	# 79	990-331-0	O-Ring (JW1530-21)	1				
# 36	190-906-6	Liner Casing Setter	1	# 80	990-335-0	O-Ring (JW1530-25)	2				
# 37	150-907-5	Relief Valve Spindle	1	# 81	990-605-0	O-Ring (25×1.45)	1				
# 38	150-970-7	Relief Valve	1	# 82	990-623-0	O-Ring (4.6×3.0×0.8)	1				
# 39	155-972-6	Accumulator	1	# 83	990-625-0	O-Ring (5.5×3.5×1.0)	2				
# 40	150-973-5	Liner Casing Spacer	1	# 84	990-900-0	O-Ring (SNS-2)	1				
# 41	150-742-5	Oil Plug	1	# 85	990-912-0	O-Ring (SNS-14)	2				
# 42	150-064-5	Plug	1	# 86	990-916-0	O-Ring (SNS-18)	1				
# 43	155-167-2	Belleville Spring (609)	2	# 87	990-333-0	O-Ring (JW1530-23)	2				
# 46	010-790-1	Suspension Ring	1								

When ordering spare parts, please specify tool type, code number and part name.

Printed in Japan

URYU SEISAKU, LTD. Osaka, Japan

OKA-422-99-07-28-2003