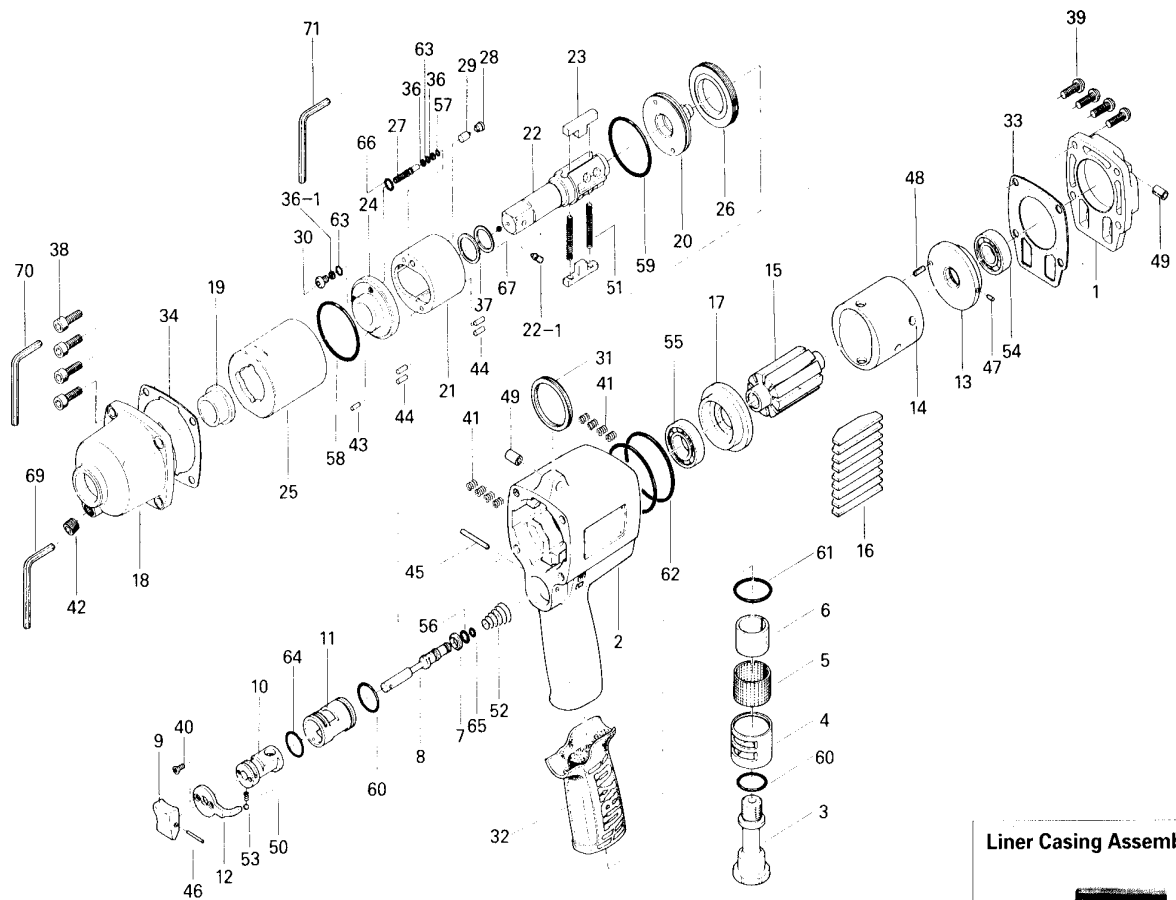


# α ALPHA 90 OIL-PULSE WRENCH

## EXPLODED VIEW



Liner Casing Assembly



Code No. 173-911-0

## PARTS LIST

Index No.	Code No.	Parts Name	Quantity	Index No.	Code No.	Parts Name	Quantity	Index No.	Code No.	Parts Name	Quantity
# 1	194-012-3	Head Cover	1	#25	194-905-3	Liner Casing	1	#49	973-340-0	Roll Pin (6×10)	2
# 2	173-025-0	Handle	1	#26	194-906-3	Liner Casing Setter	1	#50	976-006-0	Spring (3×5)	1
# 3	173-091-0	Air Inlet Bushing	1	#27	194-907-3	Relief Valve Spindle	1	#51	976-794-0	Spring (3.8×33×0.5) WPC	2
# 4	173-780-0	Exhaust Stack	1	#28	194-969-2	Relief Valve Plug	1	#52	977-160-0	Cone Spring (7.4×14×20)	1
# 5	173-042-0	Silencer	1	#29	194-970-2	Relief Valve	1	#53	981-002-0	Ball (1/8)	1
# 6	173-835-0	Filter	1	#30	194-742-3	Oil Plug	1	#54	982-403-0	Ball Bearing (EE-4)	1
# 7	173-100-0	Valve	1	#31	004-790-2	Suspension Ring	1	#55	982-950-0	Ball Bearing (16002)	1
# 8	173-104-0	Valve Rod	1	#32	173-842-0	Handle Cover	1	#56	990-002-0	O-Ring (P4)	1
# 9	177-107-5	Valve Lever	1	#33	194-853-3	Head Cover Packing	1	#57	990-320-0	O-Ring (ARP568-003)	1
#10	173-210-0	Reverse Valve	1	#34	194-867-3	Front Casing Packing	1	#58	990-338-0	O-Ring (JW1530-28)	1
#11	173-211-0	Reverse Valve Bushing	1	#36	944-002-0	Supporting Ring (2.6×4.5×1)	2	#59	990-607-0	O-Ring (34×2.3)	1
#12	173-212-0	Reverse Lever	1	#36-1	944-003-0	Supporting Ring (3×5×1)	1	#60	990-916-0	O-Ring (SNS-18)	1
#13	173-285-0	Rear Plate	1	#37	944-215-0	Supporting Ring (16×19.9×1.5)	1	#61	990-921-0	O-Ring (SNS-22.4)	1
#14	173-286-0	Cylinder	1	#38	945-117-0	Allen Head Bolt (M5×16)	4	#62	990-938-0	O-Ring (SNS-48)	2
#15	173-287-0	Rotor	1	#39	945-955-0	Hexagon Round Head Bolt (M5×16)	4	#63	990-970-0	O-Ring (SNS-2) (NOK)	2
#16	173-288-0	Blade	9	#40	948-423-0	Allen Flush Head Screw (M3×6)	2	#64	990-914-0	O-Ring (SNS-16)	1
#17	173-289-0	Front Plate	1	#41	965-011-0	Heli-Sert (M5×1.5D)	8	#65	990-972-0	O-Ring (SNS-4) (NOK)	1
#18	194-439-3	Front Casing	1	#42	966-100-0	Allen Head Plug (1/8)	1	#66	990-973-0	O-Ring (SNS-5) (NOK)	1
#19	188-328-2	Anvil Bushing	1	#43	969-450-0	Pin (G) (3×8)	1	#67	995-156-0	Teflon Seal (P16)	1
#20	194-901-3	Rear Liner Plate	1	#44	970-206-0	Allen Head Bolt (M5×16)	1	<b>ACCESSORIES</b>			
#21	194-902-3	Liner	1	#45	971-125-0	Pin (2×25)	1	#68	940-114-0	Air Hose Nipple (NPT1/4×3/8)	1
#22	891-311-1	Anvil (OP-P) Assembly	1	#46	973-014-0	Roll Pin (2×14)	1	#69	939-104-0	Allen Wrench (5mm)	1
#22-1	891-304-1	Socket Pin Assembly (1/2)	1	#47	973-066-0	Roll Pin (2.5×6)	1	#70	939-105-0	Allen Wrench (4mm)	1
#23	194-440-3	Driving Blade	2	#48	973-068-0	Roll Pin (2.5×8)	1	#71	939-109-0	Allen Wrench (2mm)	1
#24	194-904-3	Front Liner Plate	1								

When ordering spare parts, please specify tool type, code number and parts name.

Printed in Japan

**URYU SEISAKU, LTD.** Osaka, Japan

OKA-387-98-06-10-2003