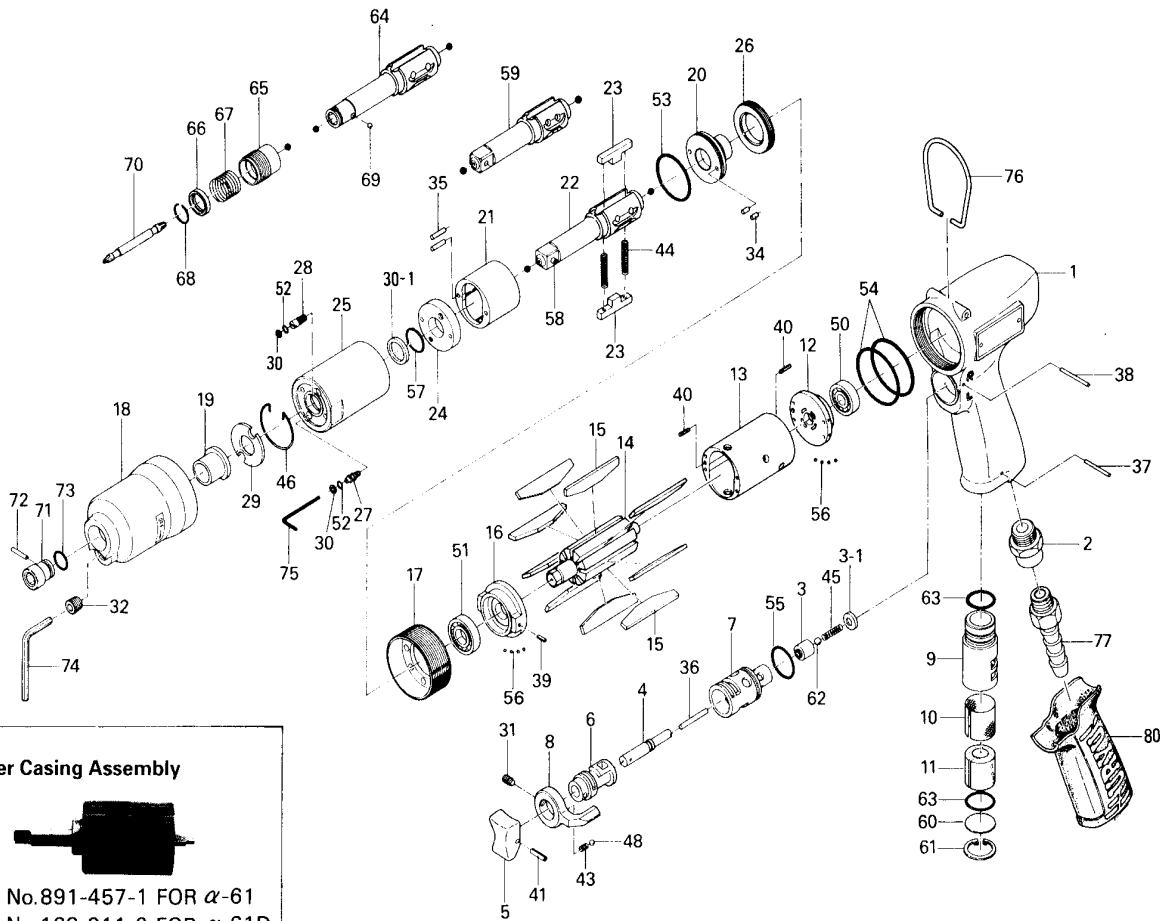




61 (D) OIL-PULSE WRENCHES

EXPLODED VIEW



Liner Casing Assembly



Code No.891-457-1 FOR α -61
Code No.168-911-2 FOR α -61D

PARTS LIST

Index No.	Code No.	Parts Name	Quantity	Index No.	Code No.	Parts Name	Quantity	Index No.	Code No.	Parts Name	Quantity
# 1	174-025-8	Casing	1	#28	178-742-0	Oil Plug	1	#57	990-152-0	O-Ring(P12) (NTN)	1
# 2	480-091-8	Air Inlet Bushing	1	#29	178-327-9	Anvil Front Spacer	1	#58	891-300-1	Socket Pin Assembly (3/8)	1
# 3	174-100-8	Valve	1	#30	944-002-0	Supporting Ring (2.6x4.5x1)	2	#59	168-319-0	Anvil (OP-O)	1
# 3-1	174-019-8	Valve Cover	1	#30-1	944-214-0	Supporting Ring(12x15.9x1.5)	1	#60	975-598-0	Round Plate (18x1)	1
# 4	427-103-5	Valve Rod Bushing	1	#31	952-106-0	Allen Head Dog Point Screw (M4x6)	1	#61	979-318-0	Inner Snap Ring (1RTW-18)	1
# 5	177-107-5	Valve Lever	1	#32	966-110-0	Allen Head Plug (NPT1/16)	1	#62	981-155-0	Ball (3.5MM)	1
# 6	480-210-9	Reverse Valve	1	#34	970-130-0	Pin (H) (2.45x4.5)	2	#63	990-914-0	O-Ring (SNS-16)	2
# 7	174-211-8	Reverse Valve Bushing	1	#35	970-135-0	Pin (H) (2.45x11)	2	#80	174-842-8	Handle Cover	1
# 8	480-212-8	Reverse Lever	1	#36	969-412-0	Pin (G) (2x12)	1	PARTS FOR α-61D			
# 9	194-780-4	Exhaust Stack	1	#37	971-160-0	Pin (2.5x20)	1	#64	168-350-2	Driver Anvil	1
#10	194-042-4	Silencer	1	#38	971-123-0	Pin (2x23)	1	#65	011-351-1	Bit Sleeve (1/8)	1
#11	174-780-8	Filter	1	#39	973-006-0	Roll Pin (2x6)	1	#66	011-352-1	Bit Spacer	1
#12	174-285-0	Rear Plate	1	#40	973-008-0	Roll Pin (2x8)	2	#67	976-327-0	Spring (13.5x11) (0.9)	1
#13	174-286-9	Cylinder	1	#41	973-014-0	Roll Pin (2x14)	1	#68	978-117-0	Snap Ring (11.7x1.0)	1
#14	174-287-8	Rotor	1	#43	976-006-0	Spring (3x5)	1	#69	981-002-0	Ball (1/8)	1
#15	174-288-8	Blade	9	#44	976-792-0	Spring (3.5x21) (0.45) WPC	2	ACCESSORIES			
#16	174-289-0	Front Plate	1	#45	976-229-0	Spring (3.2x13) (0.3)	1	#70	916-810-0	(+) Double Bit (No. 2-75)	1
#17	177-036-5	Hammer Casing Connector	1	#46	978-282-0	Snap Ring (28x1.0)	1	#71	900-028-0	Hexagon Socket 3/8" (10x19)	1
#18	178-439-8	Front Casing	1	#48	981-002-0	Ball (1/8)	1	#72	971-990-0	Pin (3x16.5)	1
#19	190-328-6	Anvil Bushing	1	#50	982-401-0	Ball Bearing (EE-2)	1	#73	990-290-0	O-Ring (JW12)	1
#20	196-901-4	Rear Liner Plate	1	#51	982-402-0	Ball Bearing (EE-3)	1	#74	939-105-0	Allen Wrench (4MM)	1
#21	190-902-6	Liner	1	#52	990-320-0	O-Ring (ARP568-003)	2	#75	939-091-0	Allen Wrench (1.5MM)	1
#22	891-303-1	Anvil (OP-P) Assembly	1	#53	990-329-0	O-Ring (JW1530-19)	1	#76	010-790-1	Suspension Ring	1
#23	190-440-6	Driving Blade	2	#54	990-337-0	O-Ring (JW1530-27)	2	#77	940-114-0	Air Hose Nipple (NPT 1/4-3/8)	1
#24	168-904-0	Liner Front Plate	1	#55	990-912-0	O-Ring (SNS-14)	1				
#25	178-905-9	Liner Casing	1	#56	981-045-0	Ball (1.5)	8				
#26	190-906-6	Liner Casing Setter	1								
#27	174-907-8	Relief Valve Spindle	1								

When ordering spare parts, please specify tool type, code number and parts name.

Printed in Japan

URYU SEISAKU, LTD.

 Osaka, Japan

OKA-383-99-01-12-2002