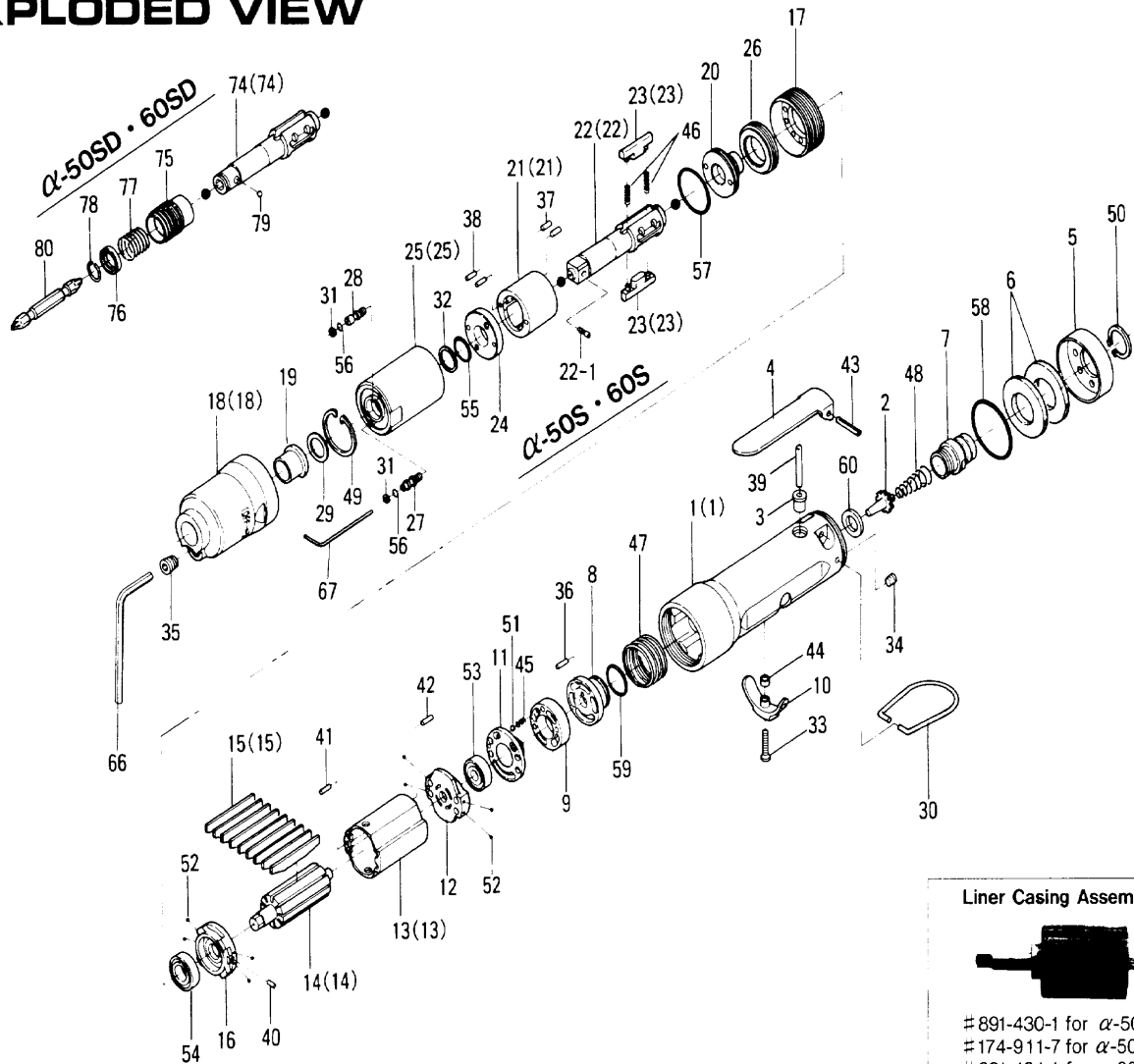


α ALPHA 50S/SD & 60S/SD OIL-PULSE TOOLS

EXPLODED VIEW



Liner Casing Assembly



- #891-430-1 for α-50S
- #174-911-7 for α-50SD
- #891-431-1 for α-60S
- #174-911-9 for α-60SD

PARTS LIST

Index No.	Code No.	Parts Name	Quantity	Index No.	Code No.	Parts Name	Quantity	Index No.	Code No.	Parts Name	Quantity
= 1	161-025-6	Casing	1	= 31	944-002-0	Supporting Ring (2.6x4.5x1) 2	1	= 60	996-423-0	Packing (16x10x2)	1
= 2	259-100-0	Valve	1	= 32	944-214-0	Supporting Ring (12x15.9x1.5) 1	1	Parts for α-50SD			
= 3	161-103-3	Valve Rod Bushing	1	= 33	948-426-0	Allen Flush Head Screw (M3x12)	1	= 74	177-350-7	Driver Anvil	1
= 4	196-107-7	Valve Lever	1	= 34	953-205-0	Allen Head Flat Point Screw (M5x5)	1	Parts for α-60SD			
= 5	161-782-6	Exhaust Cover	1	= 35	966-110-0	Allen Head Plug (NPT1 16)	1	(74)	178-350-0	Driver Anvil	1
= 6	161-835-6	Filter	2	= 36	970-014-0	Pin (H) (1.5x6.8)	1	Parts for α-50SD & α-60SD			
= 7	161-091-6	Air Inlet Bushing	1	= 37	970-130-0	Pin (H) (2.45x4.5)	2	= 75	011-351-1	Bit Sleeve (1.8)	1
= 8	161-226-6	Auxiliary Reverse Valve	1	= 38	970-135-0	Pin (H) (2.45x11)	2	= 76	011-352-1	Bit Spacer	1
= 9	161-210-6	Reverse Valve	1	= 39	970-222-0	Pin (H) (3x22)	1	= 77	976-327-0	Spring (13.5x11x0.9)	1
= 10	161-212-3	Reverse Lever	1	= 40	973-006-0	Roll Pin (2x6)	1	= 78	978-117-0	Snap Ring (11.7x1)	1
= 11	161-222-6	Reverse Valve Retainer	1	= 41	973-008-0	Roll Pin (2x8)	1	= 79	981-002-0	Ball (1.8)	1
= 12	161-285-6	Rear Plate	1	= 42	973-018-0	Roll Pin (2x18)	1	Parts for α-60S			
= 13	161-286-6	Cylinder	1	= 43	973-122-0	Roll Pin (3x22)	1	(1)	161-025-8	Casing	1
= 14	174-287-0	Rotor	1	= 44	975-002-0	Spacer (5.5x3x3)	1	(13)	161-286-8	Cylinder	1
= 15	174-288-0	Blade	9	= 45	976-006-0	Spring (3x5x0.4)	1	(14)	174-287-8	Rotor	1
= 16	161-289-6	Front Plate	1	= 46	976-238-0	Spring (3.3x21x0.4)	2	(15)	174-288-8	Blade	9
= 17	161-036-6	Hammer Casing Connector	1	= 47	976-654-0	Spring (29x14x1.5)	1	(18)	178-439-8	Front Casing	1
= 18	177-439-5	Front Casing	1	= 48	977-227-0	Cone Spring (9x12x25x0.8)	1	(21)	190-902-6	Liner	1
= 19	190-328-6	Anvil Bushing	1	= 49	978-282-0	Snap Ring (28x1)	1	(22)	891-316-1	Anvil (OP-P) Assembly	1
= 20	196-901-4	Rear Liner Plate	1	= 50	979-358-0	Inner Snap Ring (ISTW-17)	1	(23)	190-440-6	Driving Blade	2
= 21	177-902-5	Liner	1	= 51	981-002-0	Ball (1.8)	1	(25)	178-905-9	Liner Casing	1
= 22	891-307-1	Anvil (OP-P) Assembly	1	= 52	981-045-0	Ball (1.5)	8	ACCESSORIES			
= 22-1	891-300-1	Socket Pin Assembly	1	= 53	982-401-0	Ball Bearing (EE-2)	1	= 66	939-105-0	Allen Wrench (4mm)	1
= 23	177-440-5	Driving Blade	2	= 54	982-402-0	Ball Bearing (EE-3)	1	= 67	939-091-0	Allen Wrench (1.5mm)	1
= 24	178-904-8	Front Liner Plate	1	= 55	990-152-0	O-Ring (P12)	1	= 80	916-810-0	(-) Double Bit (No.2x75)	1
= 25	177-905-6	Liner Casing	1	= 56	990-320-0	O-Ring (ARP508-003)	2				
= 26	190-906-6	Liner Casing Setter	1	= 57	990-329-0	O-Ring (JW1530-19)	1				
= 27	174-907-8	Relief Valve Spindle	1	= 58	990-603-0	O-Ring (28.5x1.3)	1				
= 28	178-742-0	Oil Plug	1	= 59	990-916-0	O-Ring (SNS-18)	1				
= 29	178-327-9	Front Anvil Spacer	1								
= 30	191-790-1	Suspension Ring	1								

When ordering spare parts, please specify tool type, code number and part name.

Printed in Japan

URYU SEISAKU, LTD. Osaka Japan

OKA-429-97-11-13-2001