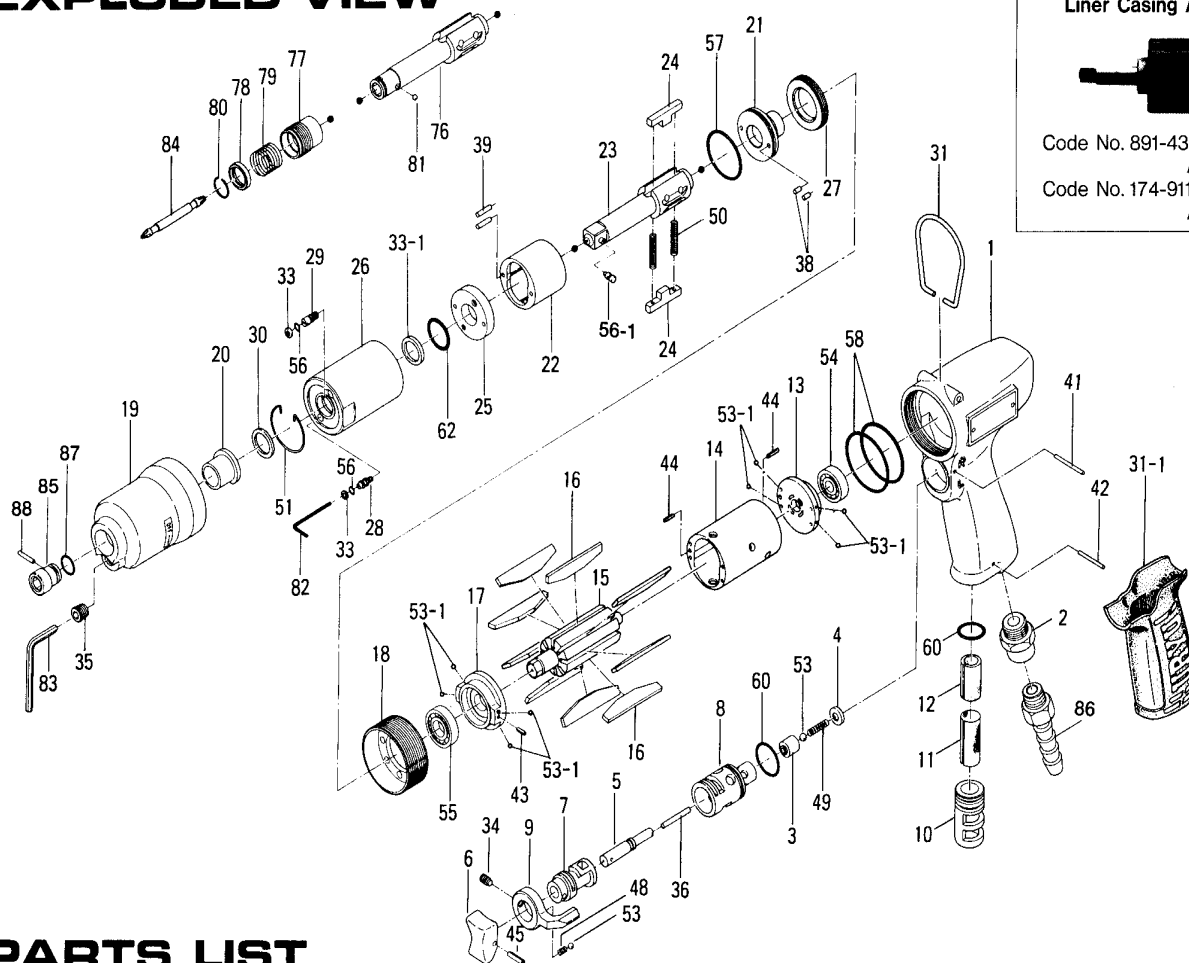


ALPHA 45,45D OIL PULSE WRENCHES

EXPLODED VIEW



Liner Casing Assembly



Code No. 891-430-1 FOR
ALPHA-45
Code No. 174-911-7 FOR
ALPHA-45D

PARTS LIST

Index No.	Code No.	Parts Name	Quantity	Index No.	Code No.	Parts Name	Quantity	Index No.	Code No.	Parts Name	Quantity
#1	162-025-8	Casing	1	#30	178-327-9	Anvil Front Spacer	1	#57	990-329-0	O-Ring (JW1530-19)	1
#2	480-091-8	Air Inlet Bushing	1	#31	010-790-1	Suspension Ring	1	#58	990-335-0	O-Ring (JW1530-25)	2
#3	850-383-1	Valve	1	#31-1	1174-842-8	Handle Cover	1	#60	990-912-0	O-Ring (SNS-14)	2
#4	850-384-1	Valve Cover	1	#33	944-002-0	Supporting Ring (2.6×4.5×1)	2	#62	990-152-0	O-Ring (P12) (NTN)	1
#5	427-103-5	Valve Rod Bushing	1	#33-1	1944-214-0	Supporting Ring (12×15.9×1.5)	1	PARTS FOR ALPHA-45D			
#6	177-107-5	Valve Lever	1	#34	952-106-0	Allen Head Dog Pint Screw (M4×6)	1	#76	177-350-7	Driver Anvil	1
#7	480-210-9	Reverse Valve	1	#35	966-110-0	Allen Head Plug (NPT1/16)	1	#77	011-351-1	Bit Sleeve	1
#8	850-382-1	Reverse Valve Bushing	1	#36	969-412-0	Pin (G) (2×12)	1	#78	011-352-1	Bit Spacer	1
#9	480-212-8	Reverse Lever	1	#38	970-130-0	Pin (H) (2.45×4.5)	2	#79	976-327-0	Spring (13.5×11) (0.9)	1
#10	480-780-8	Exhaust Stack	1	#39	970-135-0	Pin (G) (2.45×11)	2	#80	978-117-0	Snap Ring (11.7×1.0)	1
#11	480-042-8	Silencer	1	#41	971-123-0	Pin (H) (2×23)	1	#81	981-002-0	Ball (1/8)	1
#12	177-835-5	Filter	1	#42	971-120-0	Pin (H) (2×20)	1	ACCESSORIES			
#13	162-285-8	Rear Plate	1	#43	973-005-0	Roll Pin (2×5)	1	#82	939-091-0	Allen Wrench (1.5)	1
#14	162-286-8	Cylinder	1	#44	973-001-0	Roll Pin (1.5×6)	2	#83	939-105-0	Allen Wrench (4)	1
#15	161-287-3	Rotor	1	#45	973-014-0	Roll Pin (2×14)	1	#84	916-810-0	(+) Double Bit (No.2×75)	1
#16	161-288-3	Blade	9	#48	976-006-0	Spring (3.5×5) (0.4)	1	#85	900-008-0	Hexagon Socket (3/8)	1
#17	162-289-8	Front Plate	1	#49	976-229-0	Spring (3.2×13) (0.3)	1	#86	940-113-0	Air Hose Nipple	1
#18	177-036-5	Hammer Casing Connector	1	#50	976-791-0	Spring (3.3×21) (0.4)	2	#87	990-290-0	O-Ring(JW12)	1
#19	177-439-5	Front Casing	1	#51	978-282-0	Snap Ring (28×1)	1	#88	971-990-0	Pin(3×16.5)	1
#20	190-328-6	Anvil Bushing	1	#53	981-002-0	Ball (1/8)	2				
#21	196-901-4	Rear Liner Plate	1	#53-1	1981-045-0	Ball (1.5)	8				
#22	177-902-5	Liner	1	#54	982-401-0	Ball Bearing (EE-2)	1				
#23	891-307-1	Anvil (OP-P)	1	#55	982-402-0	Ball Bearing (EE-3)	1				
#24	177-440-5	Driving Blade	2	#56	990-320-0	O-Ring (ARP568-003)	2				
#25	178-904-8	Front Liner Plate	1	#56-1	891-300-1	Socket Retainer CP	1				
#26	177-905-6	Liner Casing	1								
#27	190-906-6	Liner Casing Setter	1								
#28	174-907-8	Relief Valve Spindle	1								
#29	178-742-0	Oil Plug	1								

When ordering spare parts, please specify tool type, code number and part name.

Printed in Japan

URYU SEISAKU, LTD. Osaka Japan

OKA-413-98-06-08-2003