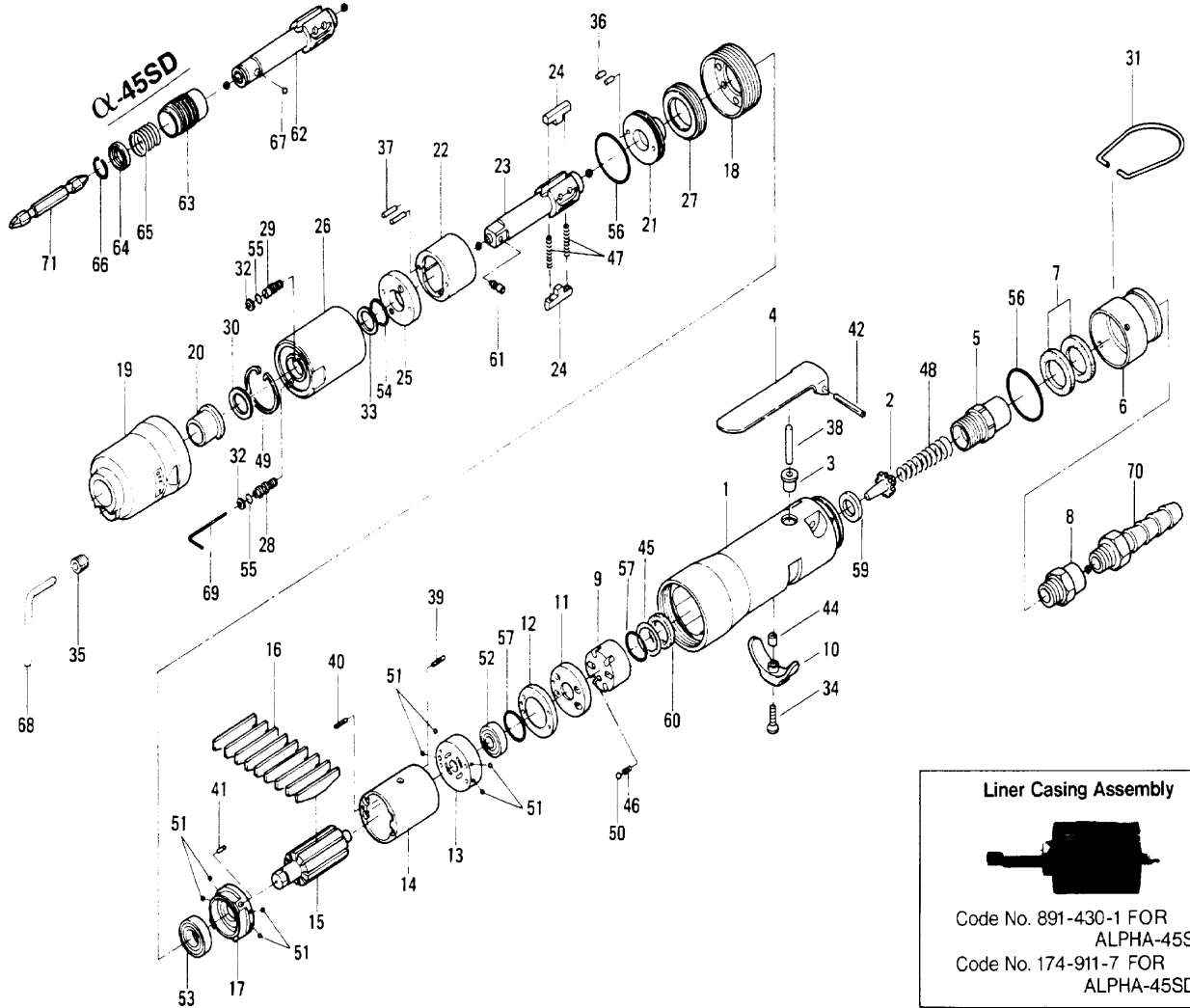



ALPHA 45S, 45SD OIL PULSE WRENCHES

EXPLODED VIEW



Liner Casing Assembly



Code No. 891-430-1 FOR ALPHA-45S
Code No. 174-911-7 FOR ALPHA-45SD

PARTS LIST

Index No.	Code No.	Parts Name	Quantity	Index No.	Code No.	Parts Name	Quantity	Index No.	Code No.	Parts Name	Quantity
≠ 1	161-025-3	Casing	1	≠ 31	010-790-1	Suspension Ring	1	≠ 59	996-424-0	Packing (16×9×2)	1
≠ 2	259-100-0	Valve	1	≠ 32	944-002-0	Supporting Ring	2	≠ 60	944-216-0	Supporting Ring(14×20×1.85)	1
≠ 3	161-103-3	Valve Rod Bushing	1	≠ 33	944-214-0	Supporting Ring	1	≠ 61	891-300-1	Socket Pin Assembly (3/8)	1
≠ 4	196-107-7	Valve Lever	1	≠ 34	948-426-0	Allen Flush Head Screw (M3×12)	1	ALPHA-45SD			
≠ 5	461-097-6	Air Inlet Connector	1	≠ 35	966-110-0	Allen Head Plug (NPT1 -16)	1	≠ 62	177-350-7	Driver Anvil	1
≠ 6	161-782-3	Exhaust Deflector	1	≠ 36	970-130-0	Pin (H) (2.45×4.5)	2	≠ 63	011-351-1	Bit Sleeve	1
≠ 7	472-835-7	Filter	2	≠ 37	970-135-0	Pin (H) (2.45×11)	1	≠ 64	011-352-1	Bit Spacer	1
≠ 8	480-091-8	Air Inlet Bushing	1	≠ 38	970-220-0	Pin (H) (3×20)	1	≠ 65	976-327-0	Spring (13.5×11) (0.9)	1
≠ 9	161-210-3	Reverse Valve	1	≠ 39	973-001-0	Roll Pin (1.5×6)	1	≠ 66	987-117-0	Snap Ring (11.7×1.0)	1
≠ 10	161-212-3	Reverse Lever	1	≠ 40	973-004-0	Roll Pin (1.5×20)	1	≠ 67	981-002-0	Ball (1/8)	1
≠ 11	161-213-3	Reverse Valve Spacer	1	≠ 41	973-005-0	Roll Pin (2×5)	1	ACCESSORIES			
≠ 12	161-291-3	Rear Plate Spacer	1	≠ 42	973-124-0	Roll Pin (3×24)	1	≠ 68	939-105-0	Allen Wrench (4MM)	1
≠ 13	161-285-3	Rear Plate	1	≠ 44	975-004-0	Spacer (5.5×3.1×2.7)	1	≠ 69	939-091-0	Allen Wrench (1.5)	1
≠ 14	161-286-3	Cylinder	1	≠ 45	975-759-0	Adjusting Spacer (20×15.2×t)	1	≠ 70	940-114-0	Air Hose Nipple (NPT1 4×3 8)	1
≠ 15	161-287-3	Rotor	1	≠ 46	976-006-0	Spring (3×5) (0.4)	1	≠ 71	916-810-0	(+)Double Bit(No.2X75)	1
≠ 16	161-288-3	Blade	9	≠ 47	976-791-0	Spring (3.3×21) (0.4) WPC	2				
≠ 17	161-289-3	Front Plate	1	≠ 48	977-155-0	Cone Spring (7×10×35)	1				
≠ 18	177-036-5	Front Casing Connector	1	≠ 49	978-282-0	Snap Ring (28×1.0)	1				
≠ 19	177-439-5	Front Casing	1	≠ 50	981-002-0	Ball (1/8)	1				
≠ 20	190-328-6	Anvil Bushing	1	≠ 51	981-045-0	Ball (1.5mm)	8				
≠ 21	196-901-4	Rear Liner Plate	1	≠ 52	982-401-0	Ball Bearing (EE-2)	1				
≠ 22	177-902-5	Liner	1	≠ 53	982-402-0	Ball Bearing (EE-3)	1				
≠ 23	891-307-1	Anvil (OP-P)	1	≠ 54	990-152-0	O-Ring (P12) (NTN)	1				
≠ 24	177-440-5	Driving Blade	2	≠ 55	990-320-0	O-Ring (ARP586-003)	2				
≠ 25	178-904-8	Front Liner Plate	1	≠ 56	990-329-0	O-Ring (JW 1530-19)	2				
≠ 26	177-905-6	Liner Casing	1	≠ 57	990-914-0	O-Ring (SNS-16)	2				
≠ 27	190-906-6	Liner Casing Setter	1								
≠ 28	174-907-8	Relief Valve Spindle	1								
≠ 29	178-742-0	Oil Plug	1								
≠ 30	178-327-9	Anvil Front Spacer	1								

When ordering spare parts, please specify tool type, code number and part name.

Printed in Japan

URYU SEISAKU, LTD. Osaka, Japan

OKA-399-98-06-16-2002