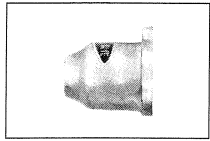


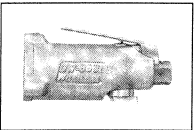
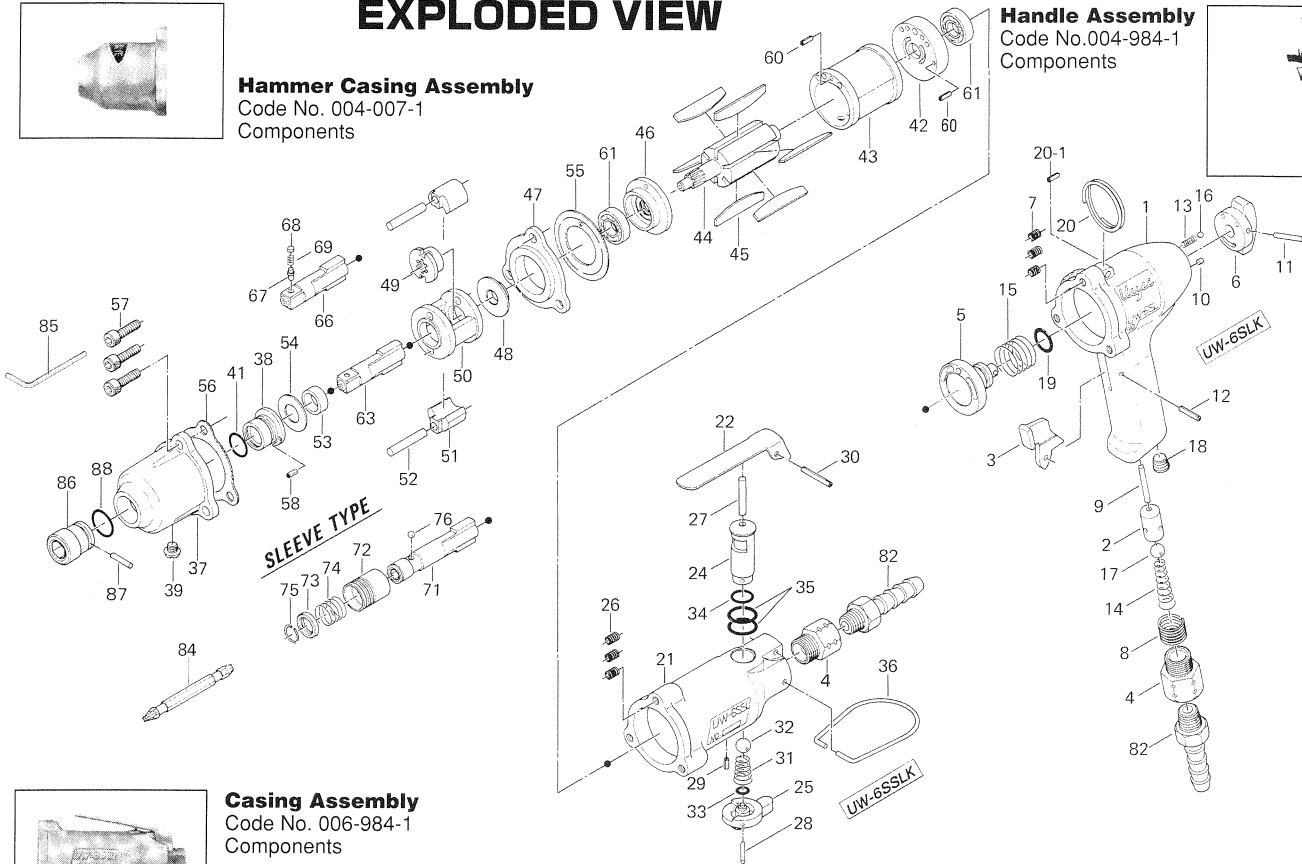
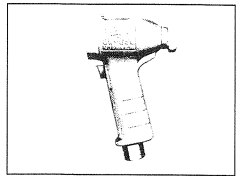
UW-6SL(D)K, UW-6SSL(D)K IMPACT WRENCHES

EXPLODED VIEW



Hammer Casing Assembly
Code No. 004-007-1
Components

Handle Assembly
Code No. 004-984-1
Components



Casing Assembly
Code No. 006-984-1
Components

Handle Assembly components are marked with "○".
Casing Assembly components are marked with "△".
Hammer Casing Assembly components are marked with "●".
Driver Anvil Assembly components (Sleeve Type) are marked with "×".

PARTS LIST

Index No.	Code No.	Parts Name	Quantity	Index No.	Code No.	Parts Name	Quantity	Index No.	Code No.	Parts Name	Quantity
PARTS FOR UW-6SLK & UW-6SLDK											
	004-984-1	HANDLE ASSEMBLY		#26	965-011-0	△ Heli-Sert (M5×1.5D)	3	#56	004-857-1	Front Packing	1
# 1	004-025-2	○ Handle	1	#27	970-328-0	△ Pin (H) (4×27)	1	#57	945-118-0	Allen Head Bolt (M5×18)	3
# 2	010-102-1	○ Valve Bushing	1	#28	971-122-0	△ Pin (2×22)	1	#58	973-006-0	● Roll Pin (2×6)	1
# 3	004-107-1	○ Throttle Trigger	1	#29	973-006-0	△ Roll Pin (2×6)	1	#60	973-074-0	Roll Pin (2.5×14)	2
# 4	185-091-7	○ Air Inlet Bushing	1	#30	973-124-0	△ Roll Pin (3×24)	1	#61	982-402-0	Ball Bearing (EE-3)	2
# 5	004-210-1	○ Reverse Valve	1	#31	977-154-0	△ Cone Spring (7×7.5×17)	1	PARTS FOR UW-6SLK & UW-6SSLK			
# 6	004-212-1	○ Reverse Lever	1	#32	981-208-0	△ Ball (5/16)	1	#63	004-319-1	* Anvil (O)	1
# 7	965-011-0	○ Heli-Sert (M5×1.5D)	3	#33	990-003-0	△ O-Ring (P-5)	1	#66	131-319-1	* Anvil (P)	1
# 8	965-073-0	○ Heli-Sert (UNF5/8 N6)	1	#34	990-008-0	△ O-Ring (P-10)	1	#67	135-800-2	Socket Retainer Pin (P-F)	1
# 9	970-228-0	○ Pin (H) (3×28)	1	#35	990-014-0	△ O-Ring (P-14)	2	#68	971-250-0	Pin (3.3×2)	1
#10	970-206-0	○ Pin (H) (3×8)	1	#36	010-790-1	△ Suspension Ring	1	#69	976-018-0	Spring (2.8×8.5)	1
#11	973-124-0	○ Pin (3×24)	1	COMMON PARTS				PARTS FOR UW-6SLDK & UW-6SSLDK (SLEEVE TYPE)			
#12	973-116-0	○ Roll Pin (3×16)	1	004-007-1	HAMMER CASING ASSY	1	#71	005-890-1	* Driver Anvil Assembly	1	
#13	976-027-0	○ Spring (3×11)	1	#37	004-028-2	● Hammer Casing	1	#72	005-350-1	× Driver Anvil	1
#14	977-155-0	○ Cone Spring (7×10×35)	1	#38	004-328-1	● Anvil Bushing	1	#73	011-351-1	× Bit Sleeve	1
#15	976-485-0	○ Spring (20.2×14)	1	#39	945-962-0	● Hexagon Head Bolt (M6×6)	1	#74	011-352-1	× Bit Spacer	1
#16	981-002-0	○ Ball (1/8)	1	#41	993-032-0	Felt Ring (12×17×2)	1	#77	976-327-0	× Spring (13.5×11)	1
#17	981-207-0	○ Ball (9/32)	1	#42	004-285-7	Rear Plate	1	#75	978-117-0	× Snap Ring (11.7×1.0)	1
#18	966-100-0	○ Hexagon Head Plug (1/8)	1	#43	004-286-7	Cylinder	1	#76	981-002-0	× Ball (1/8)	1
#19	990-010-0	○ O-Ring (P-11)	1	#44	004-287-1	Rotor	1	ACCESSORIES			
#20	004-790-2	○ Suspension Ring	1	#45	004-288-1	Blade	6	#82	940-114-0	Air Hose Nipple (NPT1/4×3/8)	1
#20-1	973-340-0	○ Roll Pin (6×10)	1	#46	004-289-7	Front Plate	1	#83	932-110-0	Air Regulator (U1/4)	1
PARTS FOR UW-6SSLK & UW-6SSLDK				#47	004-027-1	Separator	1	#84	916-810-0	(+) Double Bit (No.2×75)	1
	006-984-1	CASING ASSEMBLY	1	#48	010-310-1	Anvil Rear Spacer	1	#85	939-105-0	Allen Wrench (4mm)	1
#21	006-025-2	△ Casing	1	#49	004-311-1	Hammer Cam	1	#86	900-028-0	Hexagon Socket (10×19)	1
#22	008-107-1	△ Throttle Trigger	1	#50	004-312-1	Hammer Cage	1	#87	971-990-0	Pin (3×16.5)	1
# 4	185-091-7	△ Air Inlet Bushing	1	#51	004-313-1	Hammer	2	#88	990-290-0	O-Ring (JW12)	1
#24	008-210-1	△ Reverse Valve	1	#52	004-317-1	Hammer Pin	2				
#25	008-212-1	△ Reverse Lever	1	#53	004-326-1	Hammer Cage Bushing	1				
				#54	010-327-1	Anvil Front Spacer	1				
				#55	004-856-1	Separator Packing	1				

When ordering spare parts, please specify tool type, code number and part name.

Printed in Japan



URYU SEISAKU, LTD. Osaka, Japan

For further information, please contact at any time your nearest URYU distributor.

OKA-162-03-12-22-2025