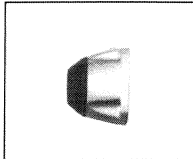
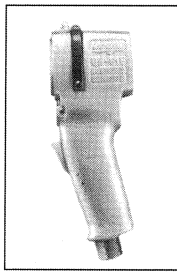


UW-61EK & UW-61ERK IMPACT WRENCHES



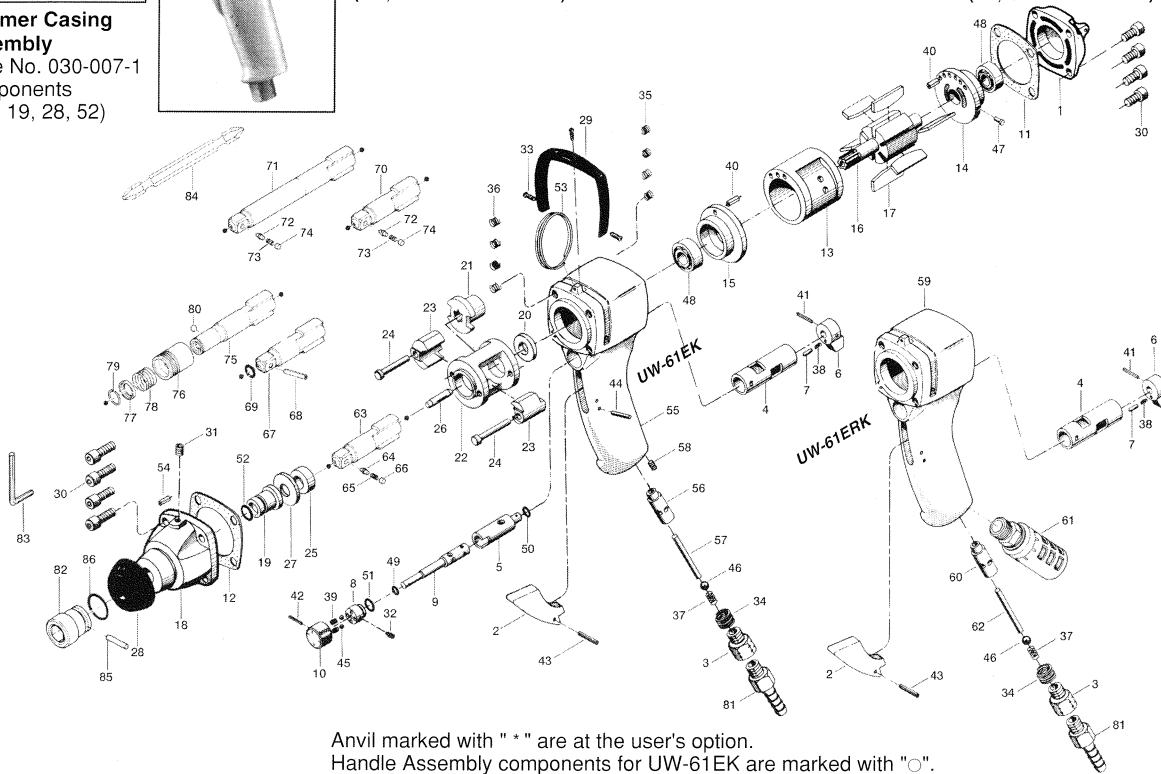
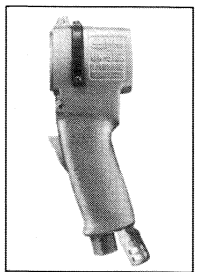
Hammer Casing Assembly
Code No. 030-007-1
Components (#18, 19, 28, 52)



Handle Assembly for UW-61EK
Code: 030-984-8
Components (#2, 3, 4, 29, 33, 34, 35, 36, 37, 46, 55, 56, 57, 58)

EXPLODED VIEW

Handle Assembly for UW-61ERK
Code: 030-004-2
Components (#2, 3, 4, 29, 33, 34, 35, 36, 37, 46, 59, 60, 62)



Anvil marked with "*" are at the user's option.
Handle Assembly components for UW-61EK are marked with "○".
Handle Assembly components for UW-61ERK are marked with "△".
Hammer Casing Assembly components are marked with "×".

PARTS LIST

Index No.	Code No.	Parts Name	Quantity	Index No.	Code No.	Parts Name	Quantity	Index No.	Code No.	Parts Name	Quantity
COMMON PARTS											
# 1	030-012-1	Head Cover	1	#32	952-212-0	Allen Head Dog Point Screw (M5×12)	1	#60	063-102-1 △	Valve Bushing	1
# 2	085-107-1 ○△	Throttle Trigger	1	#33	963-350-0 ○△	Tapping Screw (M4×8)	3	#61	026-885-7	Silencer	1
# 3	185-091-7 ○△	Air Inlet Bushing	1	#34	965-073-0 ○△	Heli-sert (UNF5/8)(N6)	1	#62	970-335-0 △	Pin (H) (4×34)	1
# 4	054-211-1 ○△	Reverse Valve Bushing	1	#35	965-011-0 ○△	Heli-sert (M5×1.5D)	4	#63	143-319-1 *	Anvil (P)	1
# 5	054-210-1	Reverse Valve	1	#36	965-012-0 ○△	Heli-sert (M5×2D)	4	#64	135-800-2	Socket Retainer Pin (FLAT)	1
# 6	054-212-1	Reverse Lever	1	#37	977-220-0 ○△	Cone Spring (9×10×25)	1	#65	976-018-0	Spring (2.8×8.5)	1
# 7	054-220-1	Reverse Lever Notch	1	#38	976-018-0	Spring (2.8×8.5)	1	#66	971-250-0	Pin (3.3×2)	1
# 8	054-241-1	Regulator Valve Bushing	1	#39	976-066-0	Spring (4.6×9)	2	OPTION			
# 9	054-240-1	Regulator Valve	1	#40	973-110-0	Roll Pin (3×10)	2	#67	018-319-1 *	Anvil (O)	1
#10	054-242-1	Regulator Dial	1	#41	973-020-0	Roll Pin (2×20)	1	#68	971-990-0	Pin (3×16.5)	1
#11	030-853-1	Rear Packing	1	#42	973-016-0	Roll Pin (2×16)	1	#69	990-290-0	O-Ring (JW12)	1
#12	030-857-1	Front Packing	1	#43	973-118-0	Roll Pin (3×18)	1	#70	143-846-2 *	Anvil (FP)	1
#13	026-286-7	Cylinder	1	#44	973-120-0	Roll Pin (3×20)	1	#71	891-060-1 *	Anvil(P-FLAT-EXTENDED)	1
#14	026-285-7	Rear Plate	1	#45	981-004-0	Ball (3/16)	2	#72	135-800-2	Socket Retainer Pin (FLAT)	1
#15	026-289-7	Front Plate	1	#46	981-210-0 ○△	Ball (3/8)	1	#73	976-018-0	Spring (2.8×8.5)	1
#16	018-287-1	Rotor	1	#47	980-008-0	Round Head Notch (2.4)	1	#74	971-250-0	Pin (3.3×2)	1
#17	018-288-1	Blade	6	#48	982-403-0	Ball Bearing (EE-4)	2	#75	025-350-2 *	Driver Anvil	1
#18	030-028-1 ×	Hammer Casing	1	#49	990-004-0	O-Ring (P6)	1	#76	011-351-1	Bit Sleeve	1
#19	018-328-1 ×	Anvil Bushing	1	#50	990-006-0	O-Ring (P8)	1	#77	011-352-1	Bit Spacer	1
#20	018-310-1	Anvil Rear Spacer	1	#51	990-009-0	O-Ring (P10A)	1	#78	976-327-0	Spring (13.5×11)	1
#21	018-311-1	Hammer Cam	1	#52	993-033-0 ×	Felt Ring (14×18×1.5)	1	#79	978-117-0	Snap Ring (11.7×1.0)	1
#22	018-312-1	Hammer Cage	1	#53	004-790-2	Suspension Ring	1	#80	981-002-0	Ball (1/8)	1
#23	018-313-1	Hammer	2	#54	973-006-0	Roll Pin (2×6)	1	ACCESSORIES			
#24	018-317-1	Hammer Pin	2	PARTS FOR UW-61EK				#81	940-114-0 ○	Air Hose Nipple (NPT 1/4×3/8)	1
#25	018-326-1	Hammer Cage Bushing	1	#55	030-025-8 ○	Handle	1	#82	900-056-0	Hexagon Socket (13×25)	1
#26	041-318-1	Pilot Pin	1	#56	054-102-1 ○	Valve Bushing	1	#83	939-105-0	Allen Wrench (4MM)	1
#27	018-327-1	Anvil Front Spacer	1	#57	970-339-0	Pin (H) (4×39)	1	#84	916-810-0	(+) Double Bit (NO.2×75)	1
#28	030-841-1 ×	Hammer Casing Protector	1	#58	966-100-0 ○	Allen Head Plug (1/8)	1	#85	971-990-0	Pin (3×16.5)	1
#29	030-840-1 ○△	Handle Protector	1	PARTS FOR UW-61ERK				#86	990-290-0	O-Ring (JW12)	1
#30	945-114-0	Allen Head Bolt (M5×14)	8	#59	030-025-2 △	Handle	1				
#31	966-100-0	Allen Head Plug (1/8)	1								

When ordering spare parts, please specify tool type, code number and part name.

Printed in Japan



URYU SEISAKU, LTD. Osaka Japan