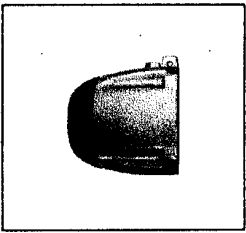
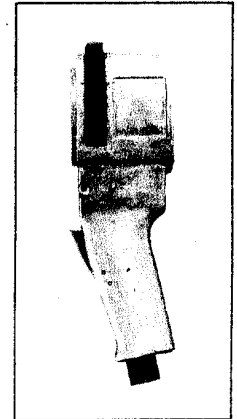
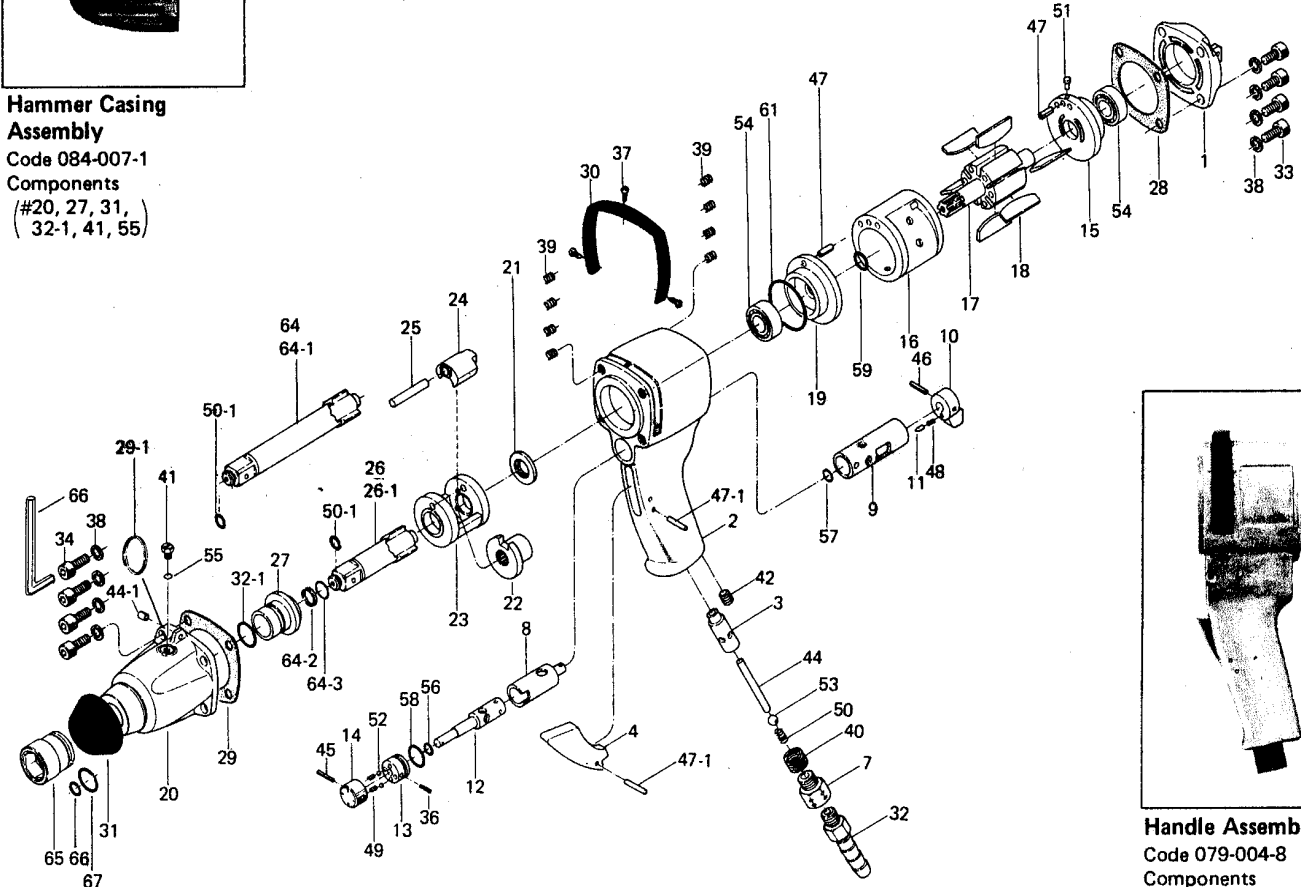


UW-2001P IMPACT WRENCH

EXPLODED VIEW



Hammer Casing Assembly
Code 084-007-1
Components (#20, 27, 31, 32-1, 41, 55)



Handle Assembly
Code 079-004-8
Components (#2, 3, 4, 7, 9, 30, 37, 39, 40, 42, 44, 47-1, 50, 53)

PARTS LIST

Handle assembly components are marked with "o".
Hammer casing assembly components are marked with "x".

Index No.	Code Number	Part Name	Quantity	Index No.	Code Number	Part Name	Quantity	Index No.	Code Number	Part Name	Quantity
# 1	078-012-1	Head Cover	1	#27	083-328-1	x Anvil Bushing	1	#50	977-220-0	o Cone Spring (9x10x25)	1
# 2	079-025-8	o Handle	1	#28	078-853-1	Rear Packing	1	#50-1	978-195-0	Snap Ring (19.7x24)	1
# 3	054-102-1	o Valve Bushing	1	#29	078-857-1	Front Packing	1	#51	980-008-0	Round Head Notch (2.4)	1
# 4	085-107-1	o Throttle Trigger	1	#30	078-840-1	o Handle Protector	1	#52	981-004-0	Steel Ball (3/16)	2
# 7	078-091-2	o Air Inlet Bushing	1	#31	083-841-1	x Hammer Casing Protector	1	#53	981-210-0	o Steel Ball (3/8)	1
# 8	078-210-1	Reverse Valve	1	#32-1	995-010-0	x Oil Seal (G25 x 33 x 4)	1	#54	982-103-0	Ball Bearing (6003)	2
# 9	078-211-1	o Reverse Valve Bushing	1	#33	945-216-0	Allen Head Bolt (M6 x 16)	4	#55	990-003-0	x O-Ring (P5)	1
#10	054-212-1	Reverse Lever	1	#34	945-218-0	Allen Head Bolt (M6 x 18)	4	#56	990-004-0	O-Ring (P6)	1
#11	054-220-1	Reverse Lever Notch	1	#36	952-214-0	Allen Head Dog Point Screw (M5 x 14)	1	#57	990-006-0	O-Ring (P8)	1
#12	078-240-1	Regulator Valve	1	#37	963-350-0	o Tapping Screw (M4 x 8)	3	#58	990-211-0	O-Ring (JW1516-11)	1
#13	078-241-1	Regulator Valve Bushing	1	#38	962-079-0	Spring Washer (6.5 x 10 x 1.5)	8	#59	990-017-0	O-Ring (P18)	1
#14	054-242-1	Regulator Dial	1	#39	965-021-0	o Heli-Sert (M6 x 1.5D)	8	#61	990-039-0	O-Ring (P40)	1
#15	078-285-1	Rear Plate	1	#40	965-071-0	o Heli-Sert (UNF5/8 x 1D)	1	#64	891-021-1	Extended Anvil (WR)	1
#16	078-286-1	Cylinder	1	#41	966-005-0	x Hexagon Head Plug (M6)	1	#64-1	083-323-1	Extended Anvil (O-R)	1
#17	083-287-1	Rotor	1	#42	966-100-0	o Allen Head Plug (1/8)	1	#64-2	891-022-1	Snap Ring	1
#18	078-288-1	Blade	6	#44	970-341-0	o Pin (H) (4 x 41)	1	#64-3	990-210-0	O-Ring (JW1516-10)	1
#19	078-289-1	Front Plate	1	#44-1	973-360-0	Roll Pin (8 x 10)	1	Accessories			
#20	084-028-1	x Hammer Casing	1	#45	973-018-0	Roll Pin (2 x 18)	1	#29-1	004-790-2	Suspension Ring	1
#21	083-310-1	Anvil Rear Spacer	1	#46	973-020-0	Roll Pin (2 x 20)	1	#32	940-125-0	Air Hose Nipple (NPT 3/8 x 1/2)	1
#22	083-311-3	Hammer Cam	1	#47	973-314-0	Roll Pin (5 x 14)	2	#65	900-380-0	Hexagon Socket (32 x 54)	1
#23	083-312-1	Hammer Cage	1	#47-1	973-124-0	o Roll Pin (3 x 24)	2	#66	971-993-0	Pin (4 x 33)	1
#24	083-313-3	Hammer	1	#48	976-018-0	Spring (2.8 x 8.5)	1	#67	990-293-0	O Ring (JW23)	1
#25	083-317-1	Hammer Pin	1	#49	976-066-0	Spring (4.6 x 9)	2	#68	939-104-0	Allen Wrench (5MM)	1
#26	083-319-1	Anvil (O-R)	1								
#26-1	891-020-1	Anvil (WR)	1								

When ordering spare parts, please specify tool type, code number and part name.

URYU SEISAKU, LTD. Osaka, Japan